

Opening Presentation

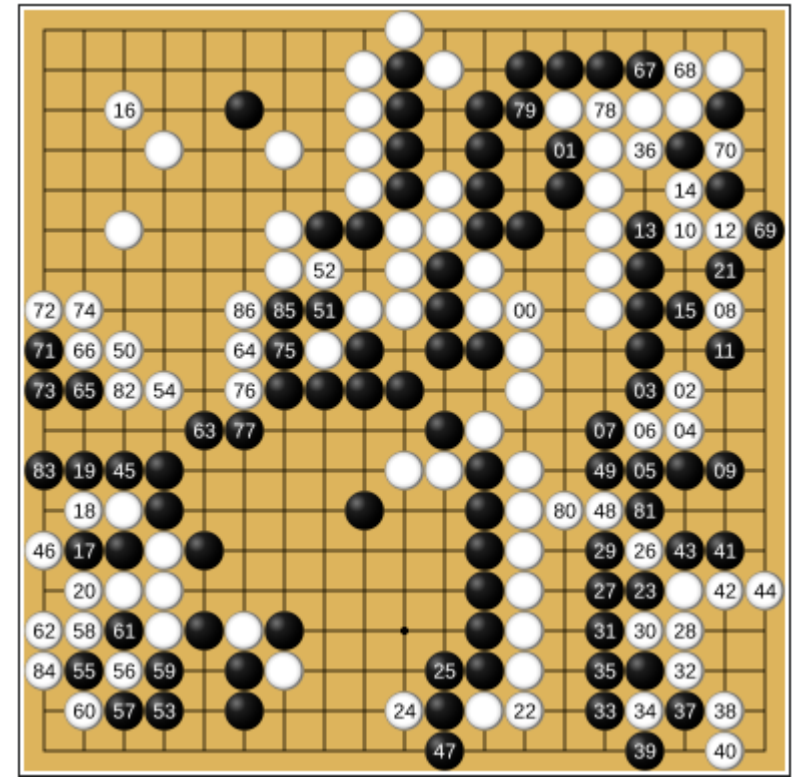
Dongchul Cho
President, Korea Development Institute

KDI-Brookings Joint Seminar on “Digital Transformation and Artificial Intelligence:
Implications for Inequality and Global Economic Convergence”

Oct 22, 2024

AlphaGo vs. Sedol Lee

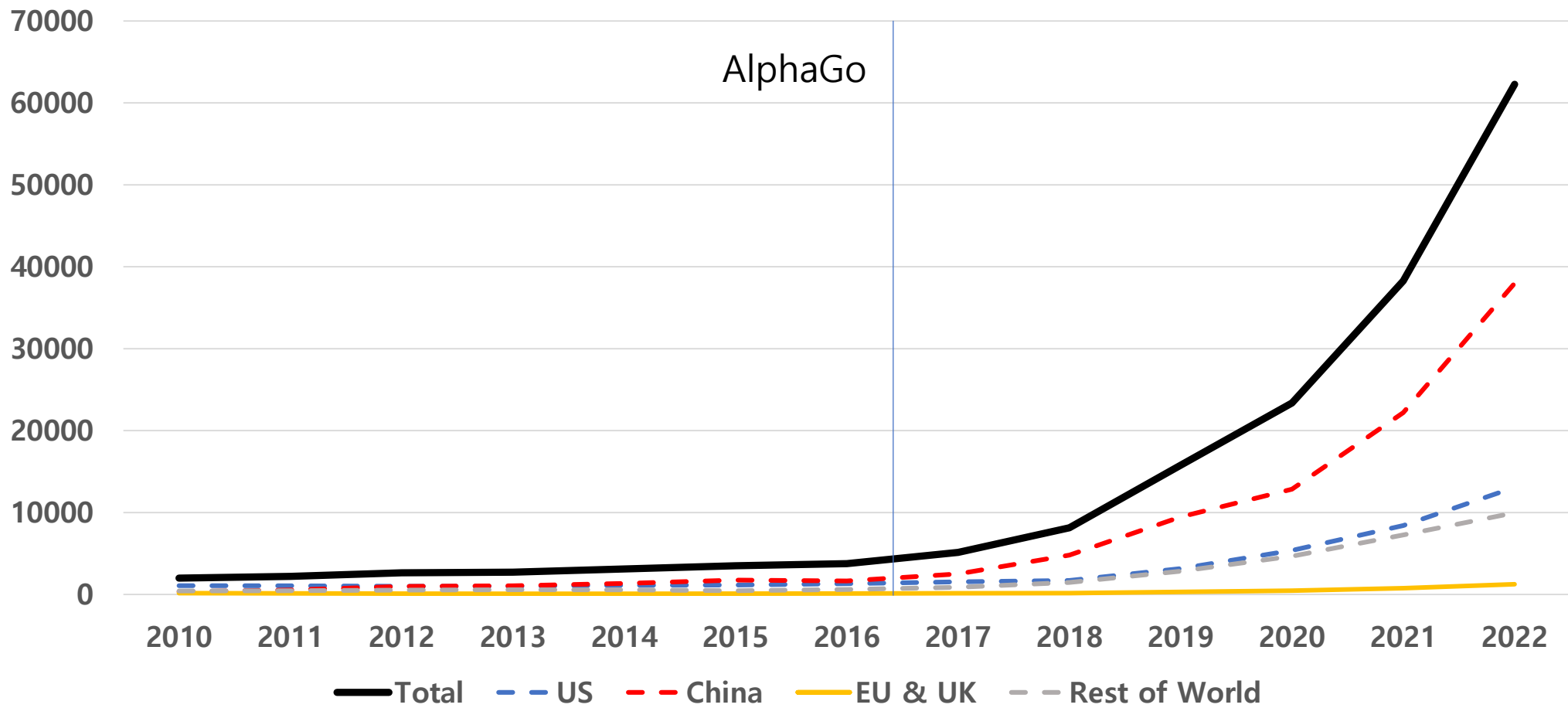
The event that ignited AI revolution, March 2016.



Source: https://www.ytn.co.kr/_ln/0107

Evolution of AI Patent

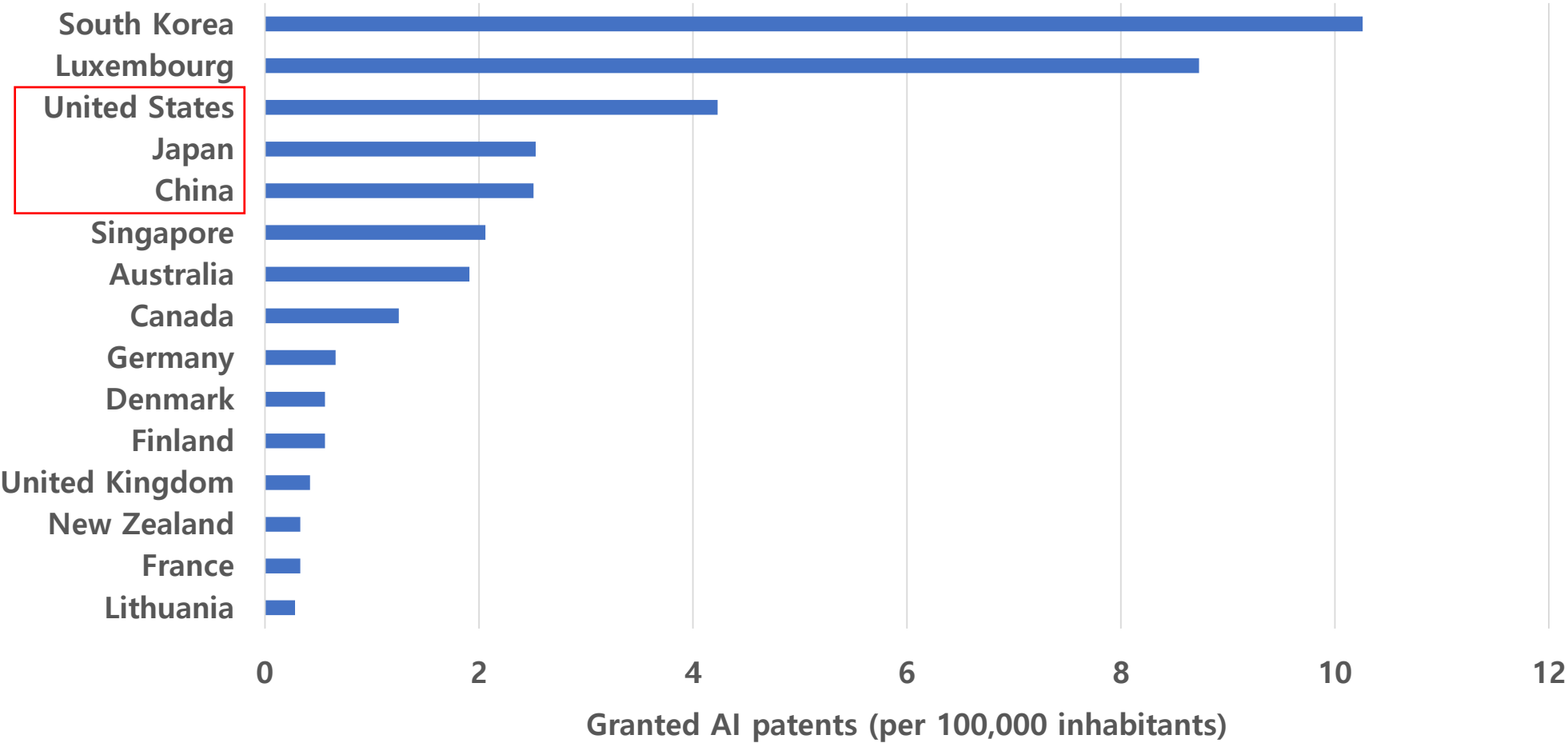
Granted AI Patents by geographic area, 2010-2022



Source: Artificial Intelligence Report 2024, Stanford University

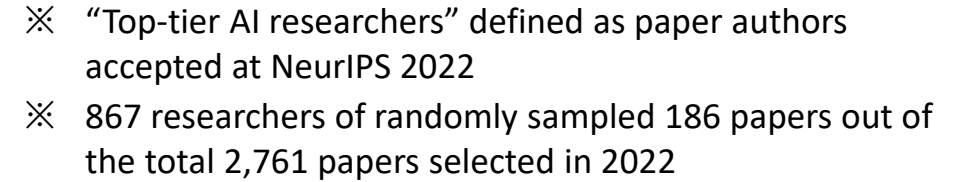
Evolution of AI Patent

Granted AI Patents per 100,000 inhabitants by country, 2022



Source: Artificial Intelligence Report 2024, Stanford University

Undergrad → Graduate → Work



- Source: MacroPolo. (2023). The global AI talent tracker.
<https://macropolo.org/digital-projects/the-global-ai-talent-tracker/>

AI's Impact on Global Inequality

AI's rapid advancement is concentrating talent and innovation in a few regions, risking deeper global inequality rather than fostering convergence.

Against Convergence?

- **Talent:**
 - The vast majority of AI talent remains clustered in a few key regions (U.S., China ...)
- **Innovation:**
 - The uneven distribution of innovation deepens global inequalities by limiting the spread of AI's economic benefits.
- **Adoption:**
 - AI's adoption, especially in automation and process optimization, is progressing unevenly across countries, potentially widening the digital divide.