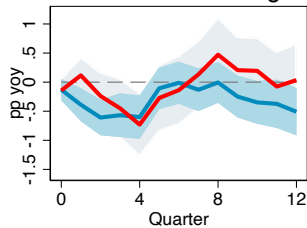
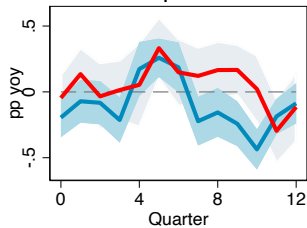


GDP deflator change



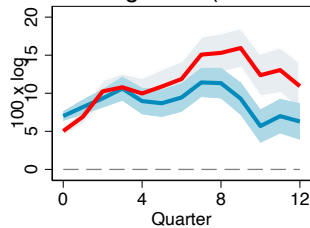
Low dollar exposure  
High dollar exposure

consumer price inflation



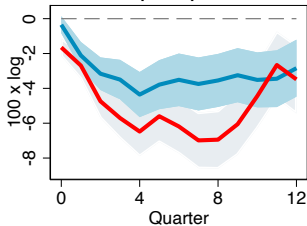
Low dollar exposure  
High dollar exposure

exchange rate (LC/USD)



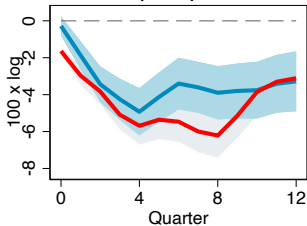
Low dollar exposure  
High dollar exposure

export price



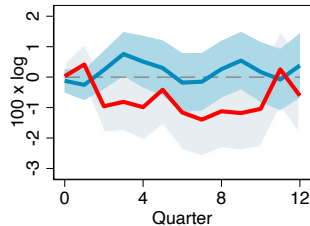
Low dollar exposure  
High dollar exposure

import price



Low dollar exposure  
High dollar exposure

terms of trade



Low dollar exposure  
High dollar exposure