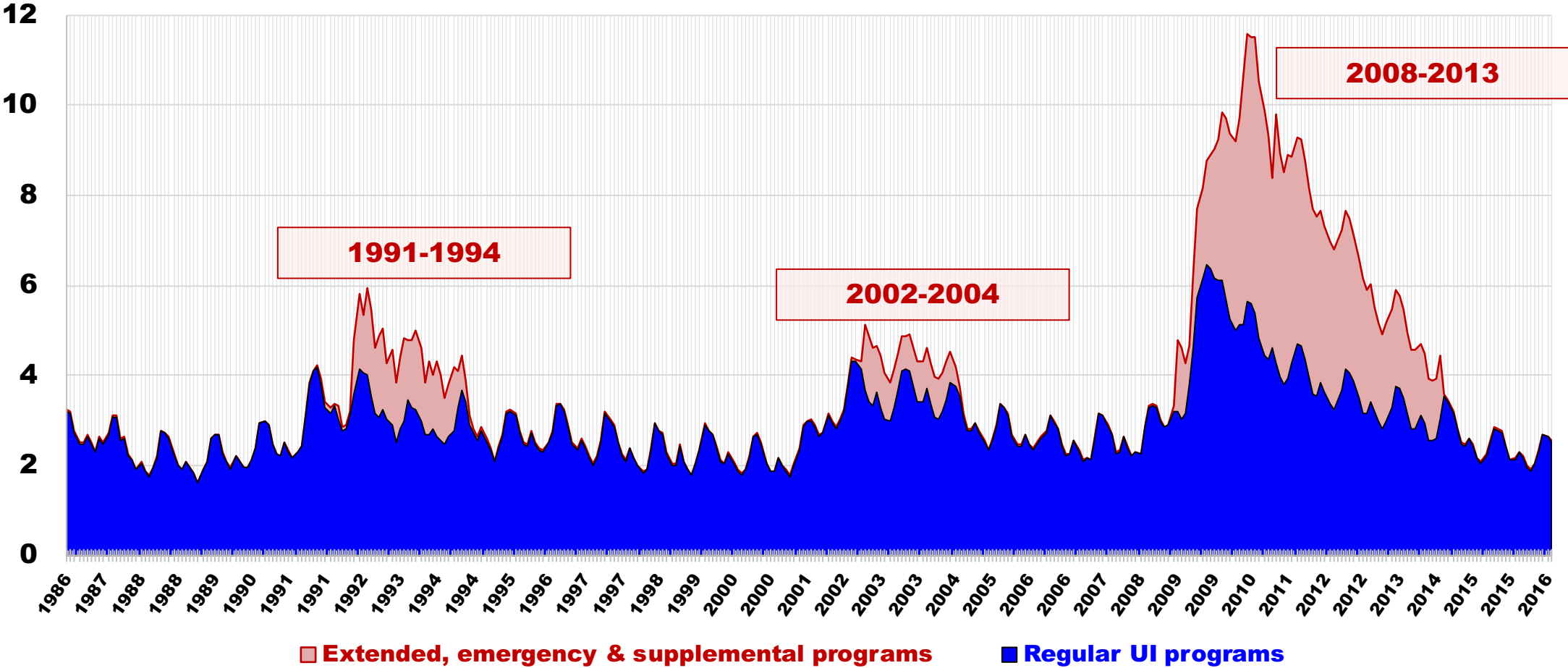


Chart 1

Persons filing continued UI claims under regular programs and under extended, supplemental, and emergency UI programs, Feb. 1986 thru Mar. 2016 (Millions)

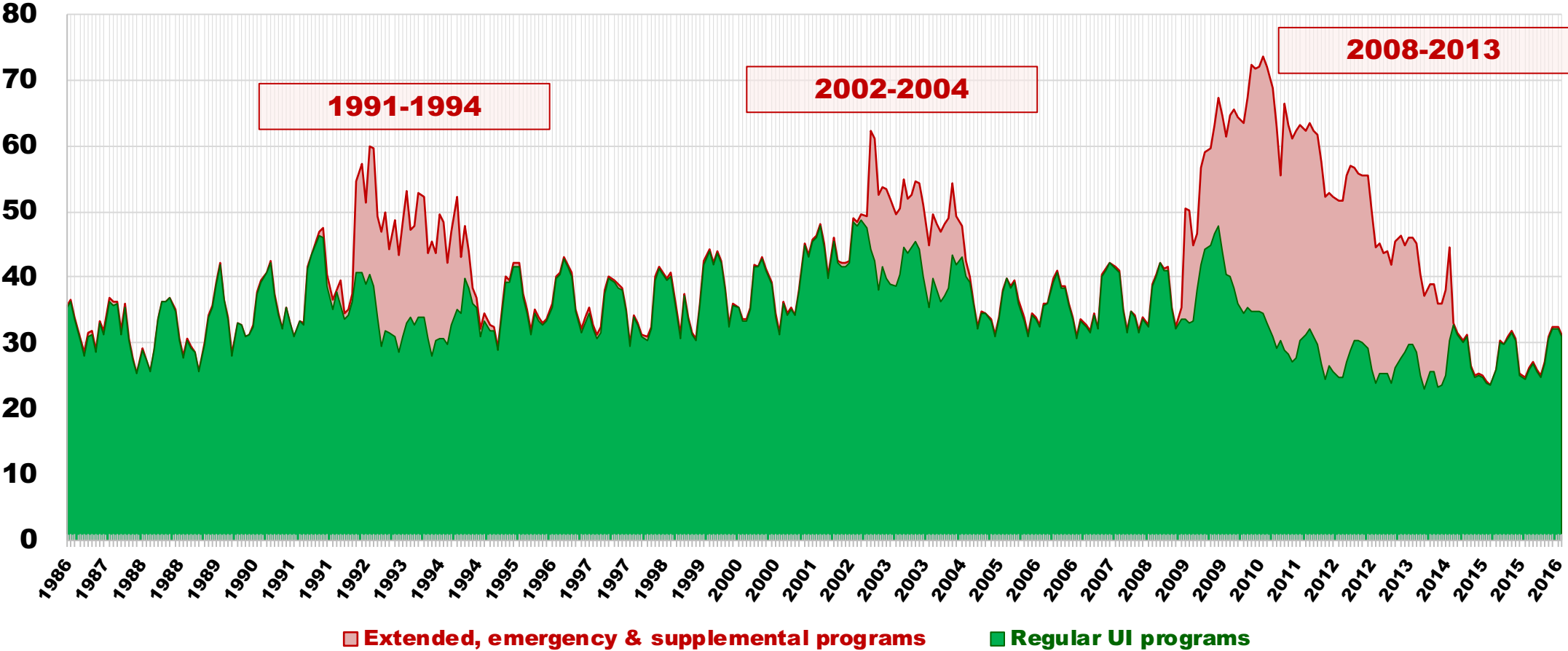


Source: Gary Burtless tabulations of data prepared by U.S. DOL / ETA.

Chart 2

Unemployed workers filing continued UI claims under regular programs and under extended, supplemental, and emergency UI programs, Feb. 1986 thru Mar. 2016

(Percent of all unemployed)

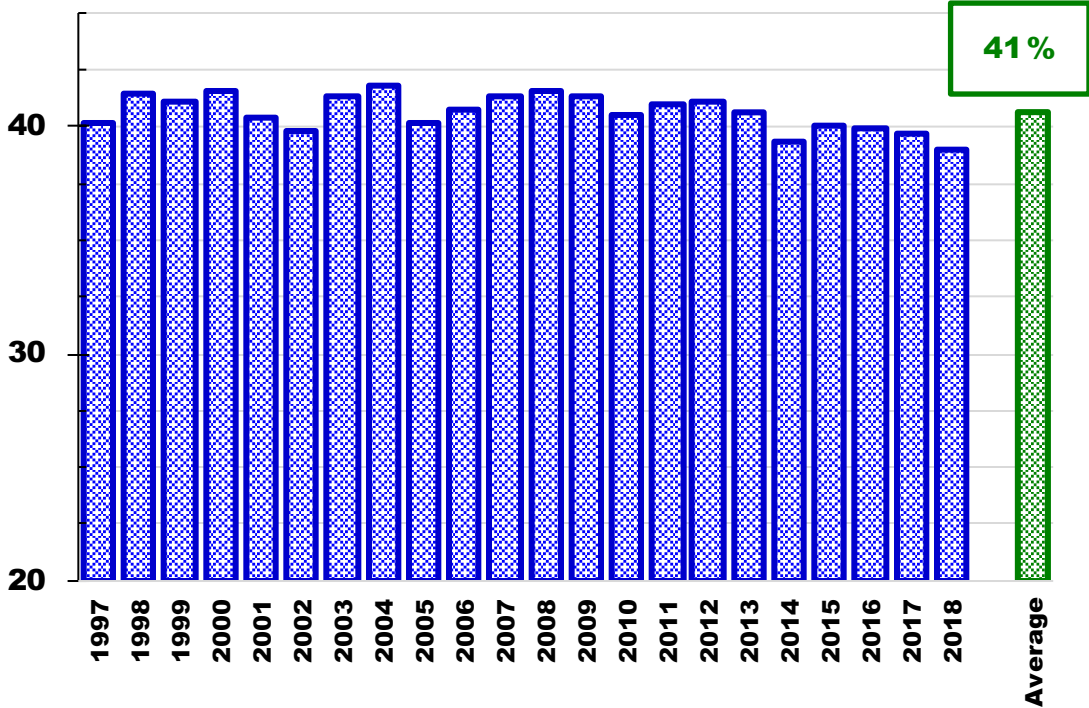


Source: Gary Burtless tabulations of data prepared by U.S. DOL / ETA and U.S. BLS.

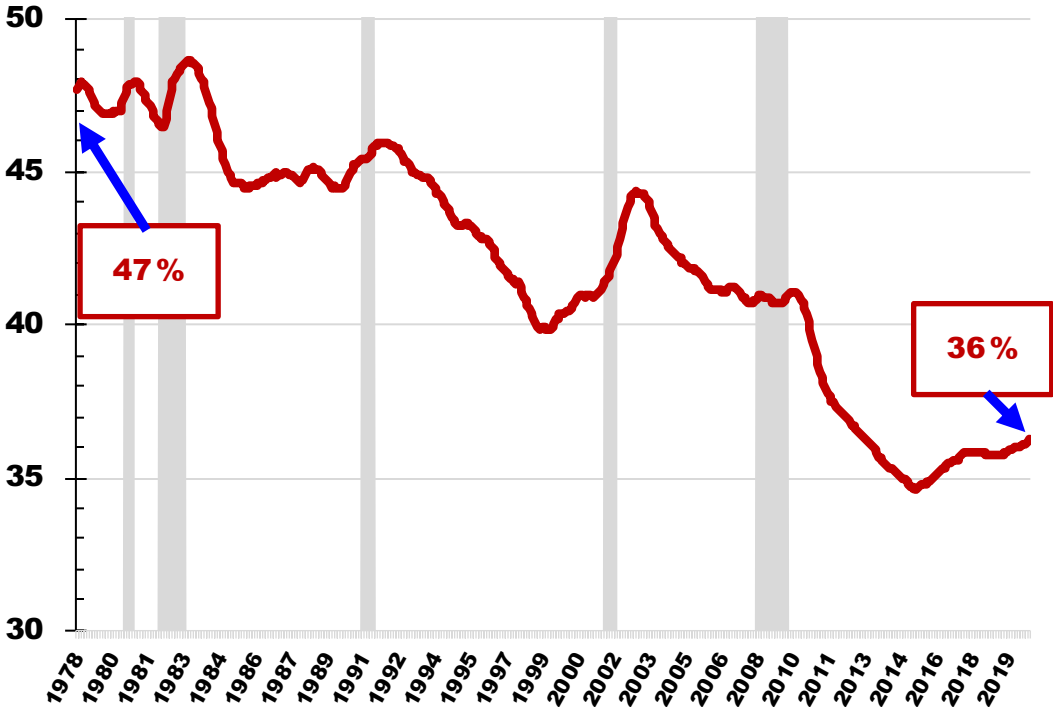
Chart 3

How much of a typical earner's lost wages are replaced by UI benefits?

UI Replacement rate: Recipients' Average weekly benefit amount / Recipients' Average weekly earnings, 1997-2018



Average weekly UI check as percent of average weekly earnings of production and nonsupervisory employees, 1978-2020

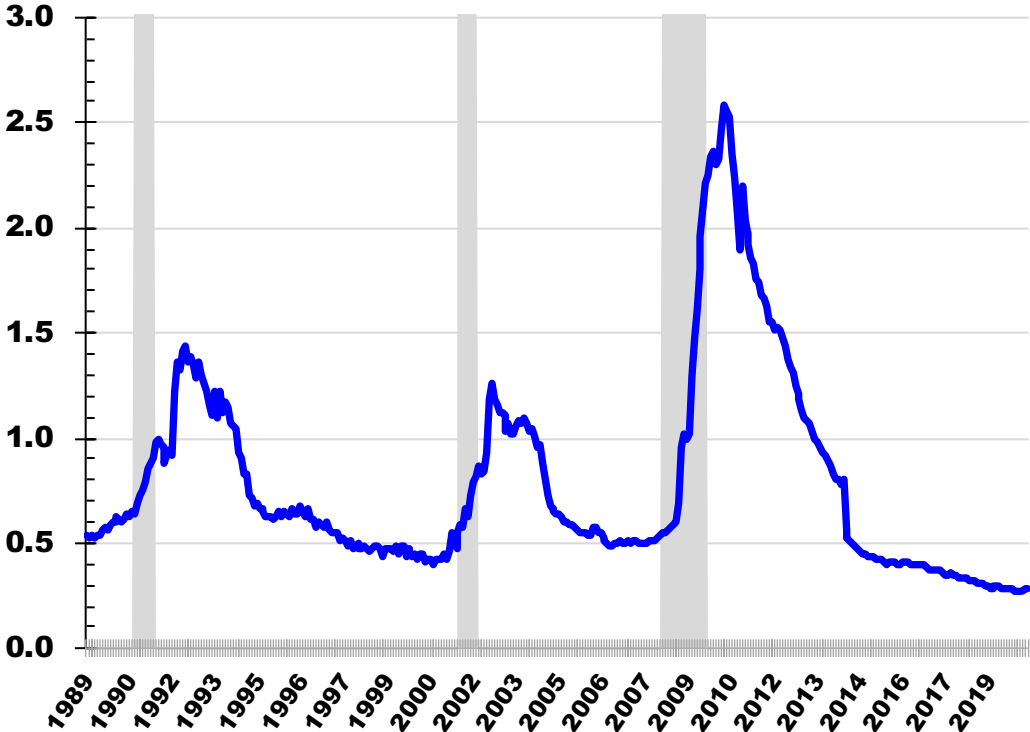


Source: Gary Burtless tabulations of data prepared by U.S. DOL / ETA and U.S. BLS.

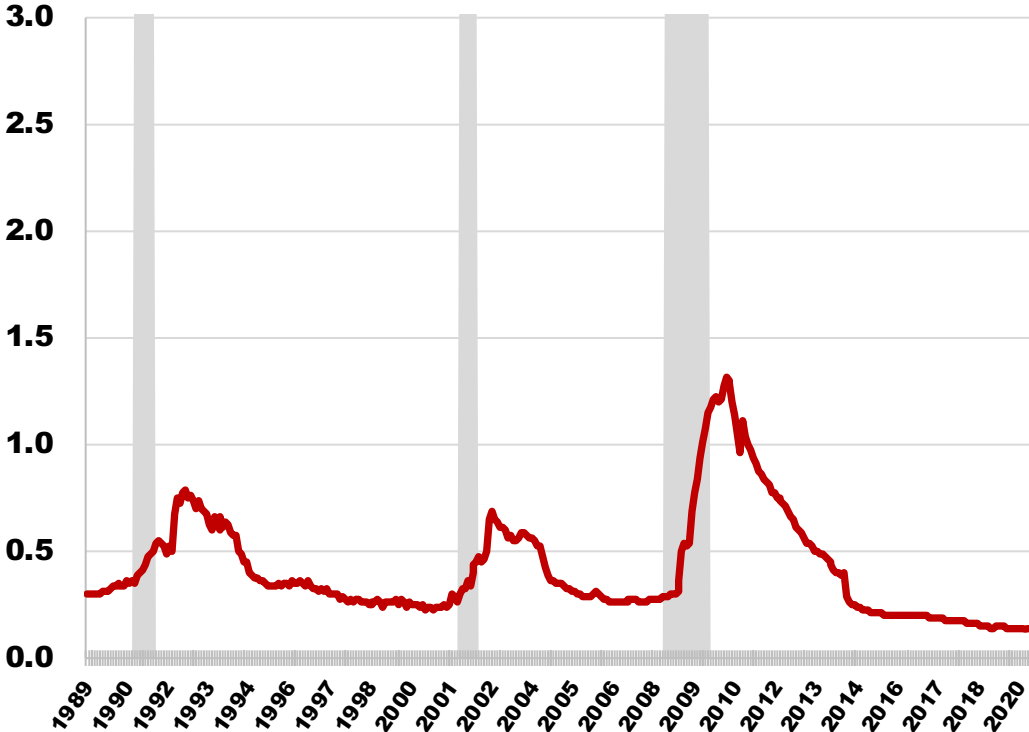
Chart 4

Unemployment compensation outlays over the business cycle

Unemployment compensation payments as percent of current month's wage and salary income, 1989-2020



Unemployment compensation payments as percent of current month's personal income, 1989-2020



Source: Gary Burtless tabulations of NIPA data published by BEA.