

WHAT JOBS *are* AFFECTED *by* AI?

What is artificial intelligence?

AI is an increasingly powerful form of digital automation, based on machines that can learn, reason, and act for themselves.



A new Brookings report assesses the impact of AI on the labor market, leveraging a unique new study that quantifies the exposure of occupations to AI by analyzing the overlap between AI-related patents and job descriptions.



Who is most exposed to AI?

Better paid professionals and bigger, high-tech metro areas are the most exposed to AI.

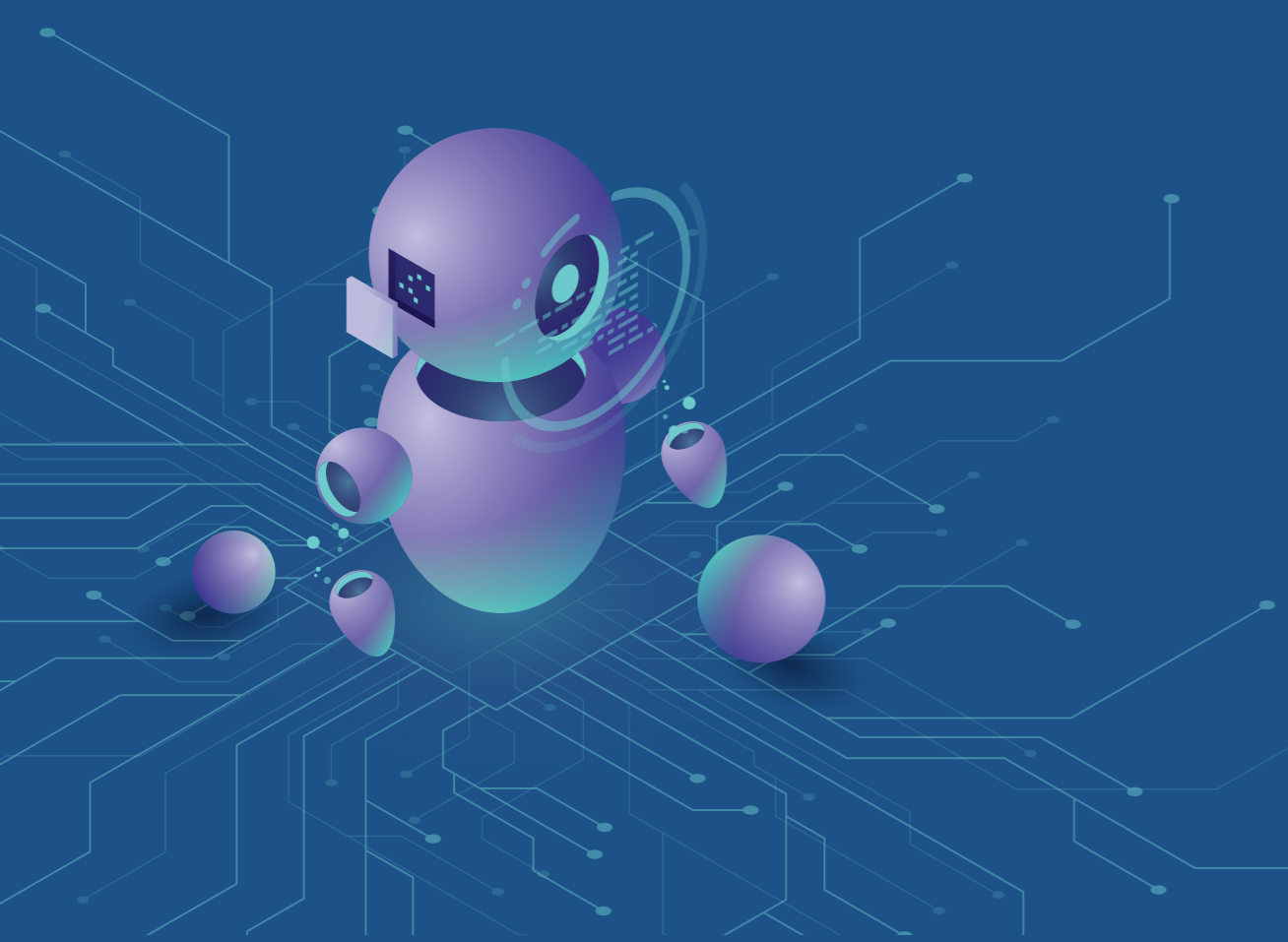
AI could affect work in virtually every occupational group, in particular:

- ◆ **Managers**
- ◆ **Supervisors**
- ◆ **Analysts**
- ◆ **Factory workers**



Across demographics, workers who are most vulnerable to AI are:

- ◆ **Men**
- ◆ **Prime-age workers**
- ◆ **White workers**
- ◆ **Asian American workers**



State exposure to artificial intelligence

