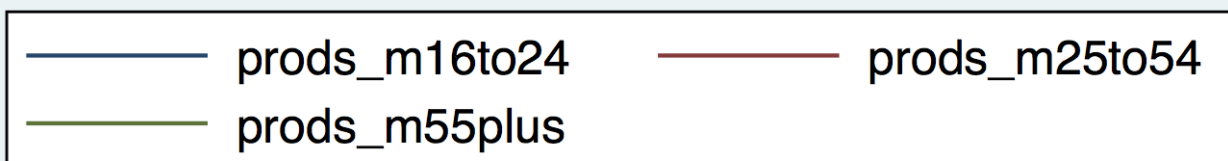
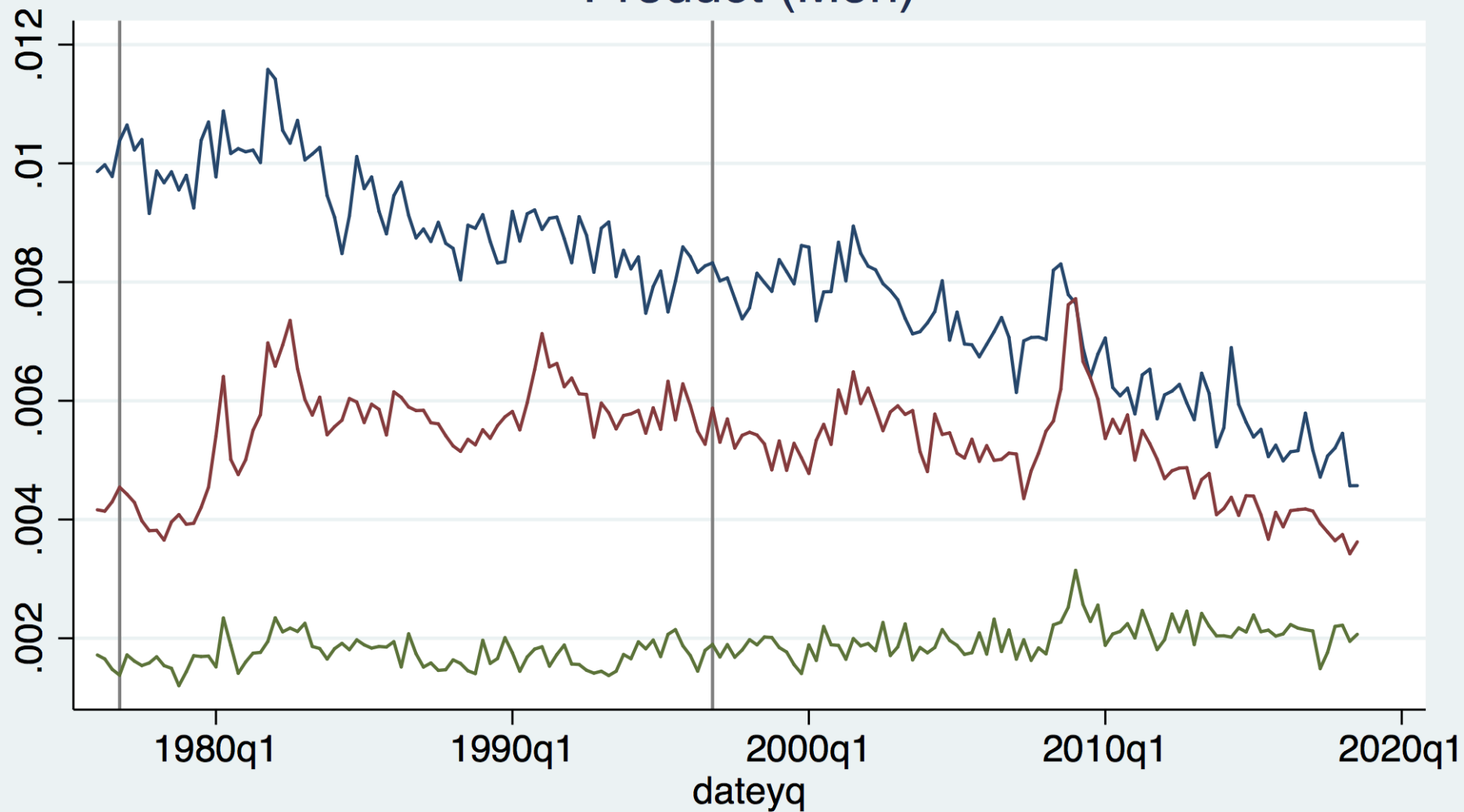
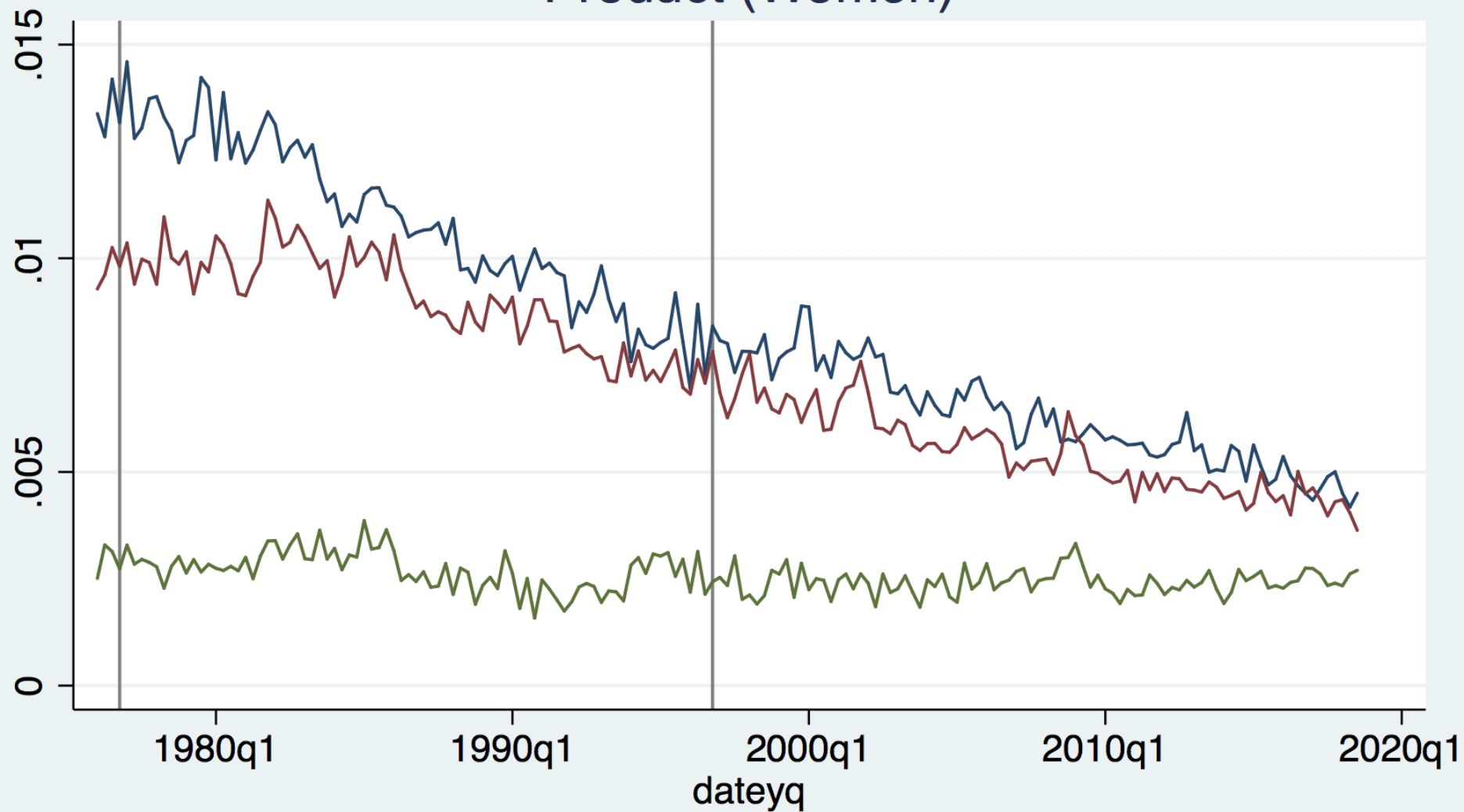


Product (Men)



Product (Women)

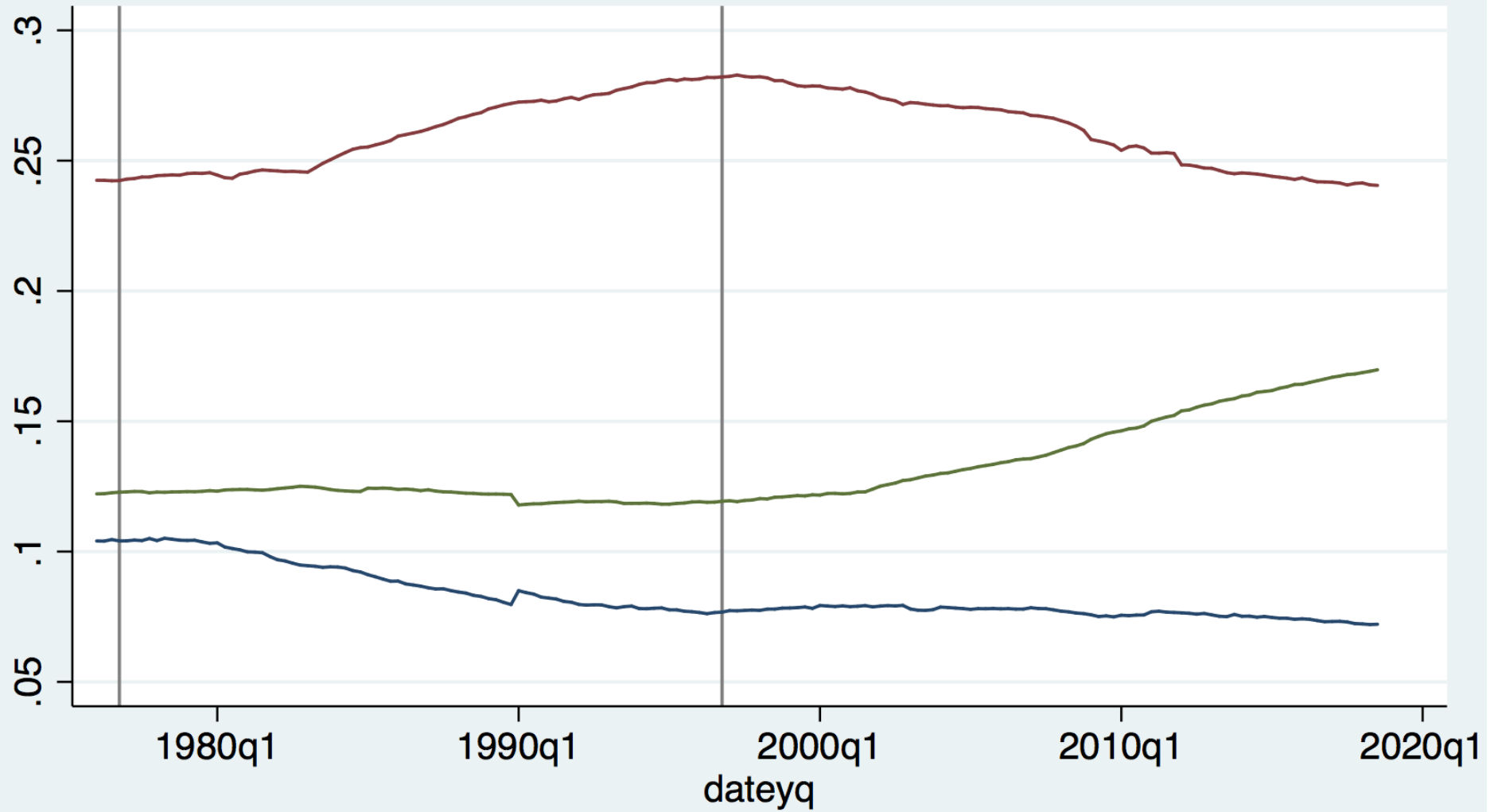


prods_f16to24

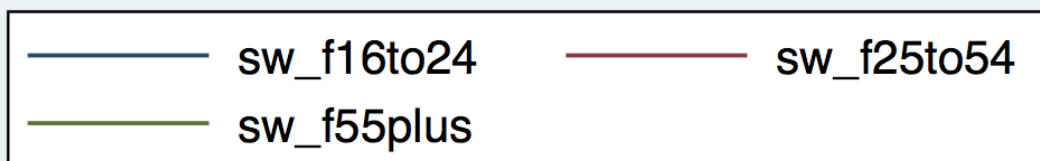
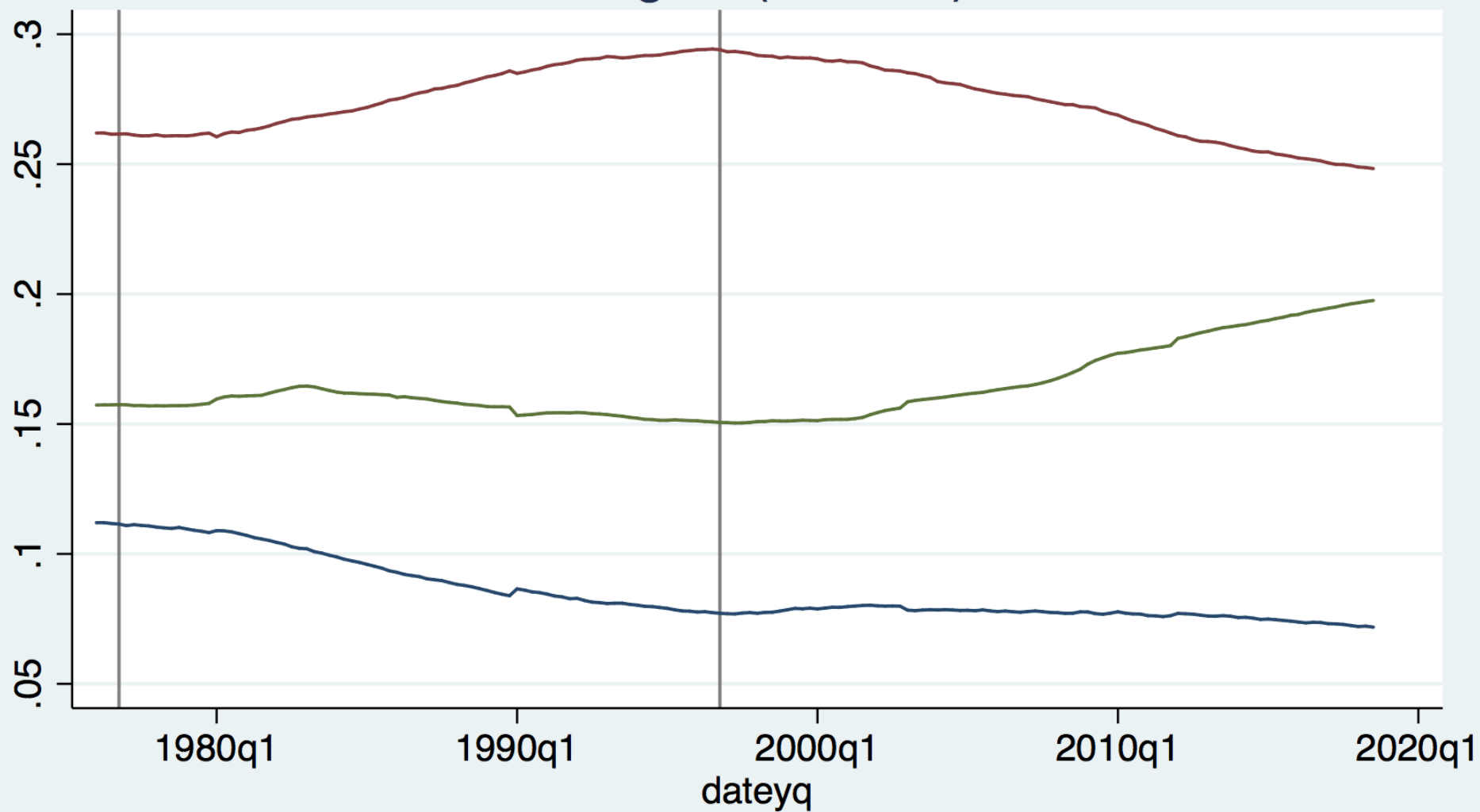
prods_f25to54

prods_f55plus

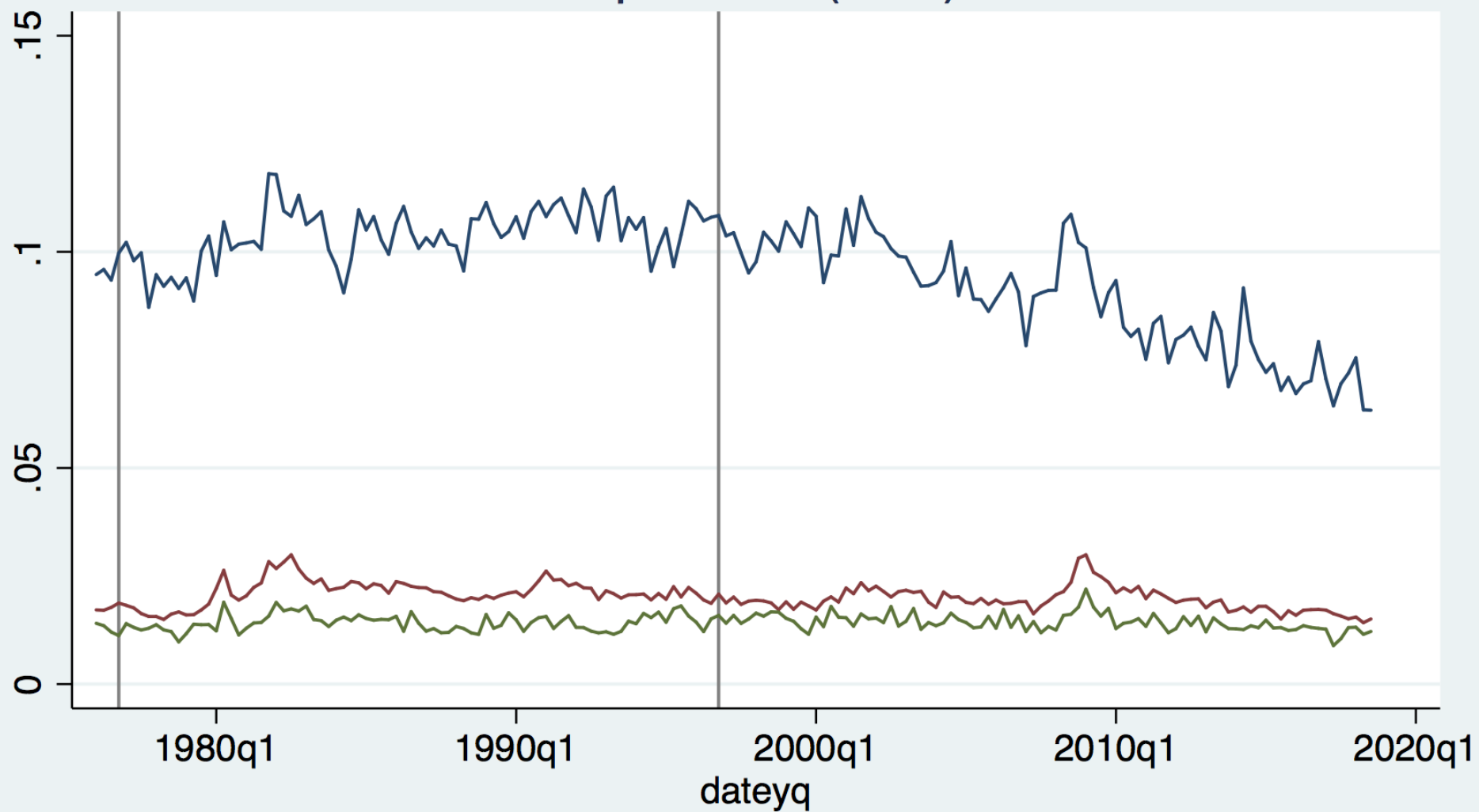
Weights (Men)



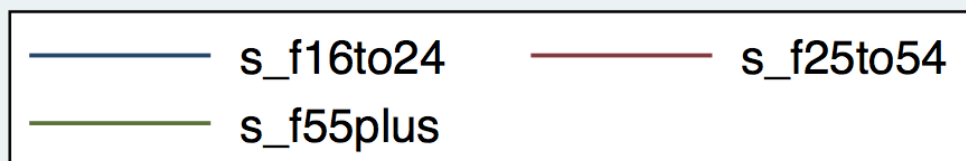
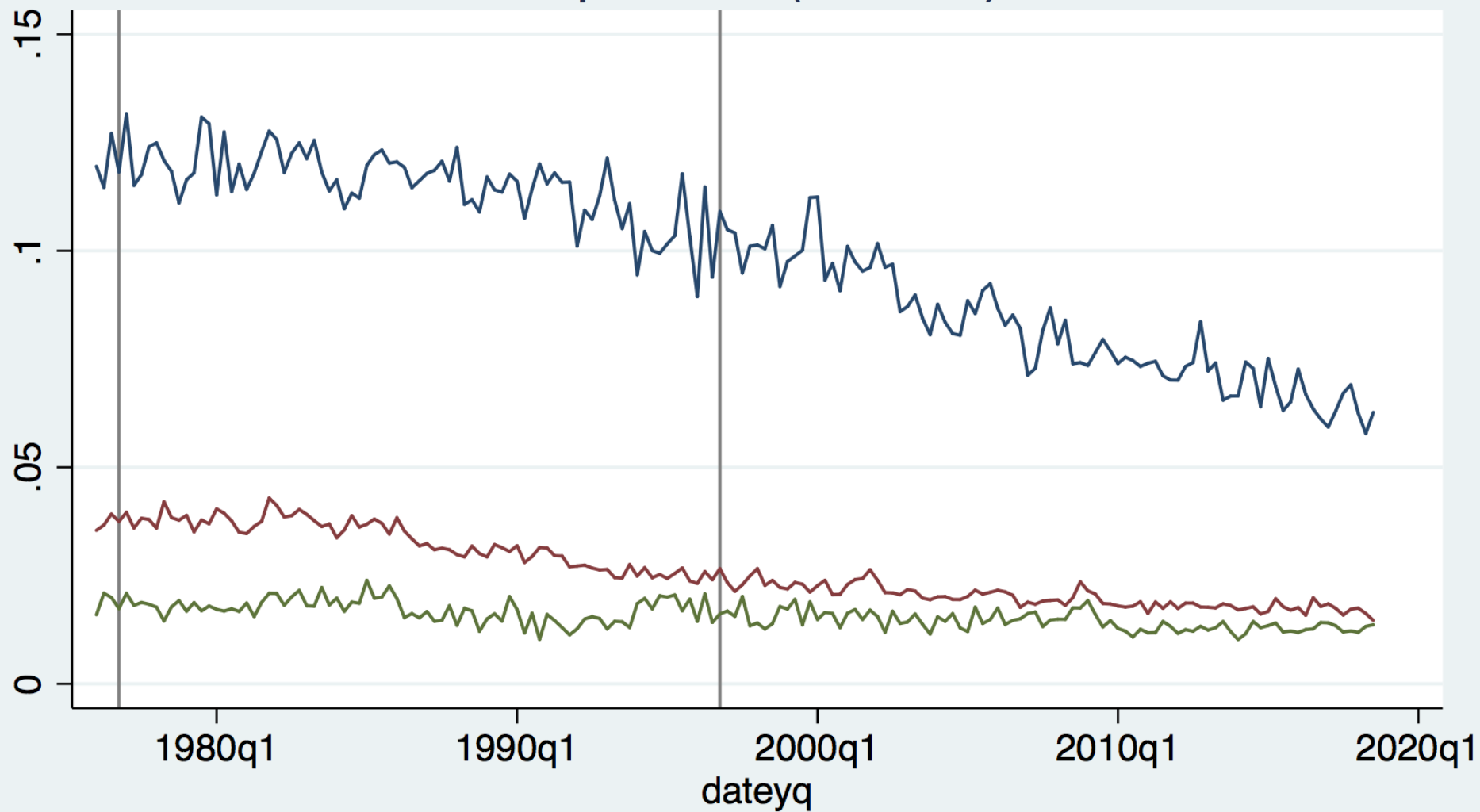
Weights (Women)



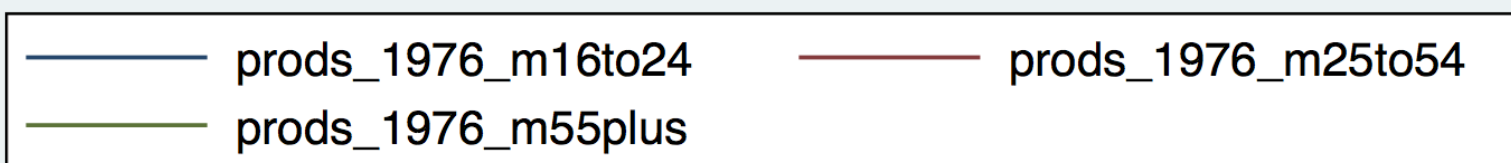
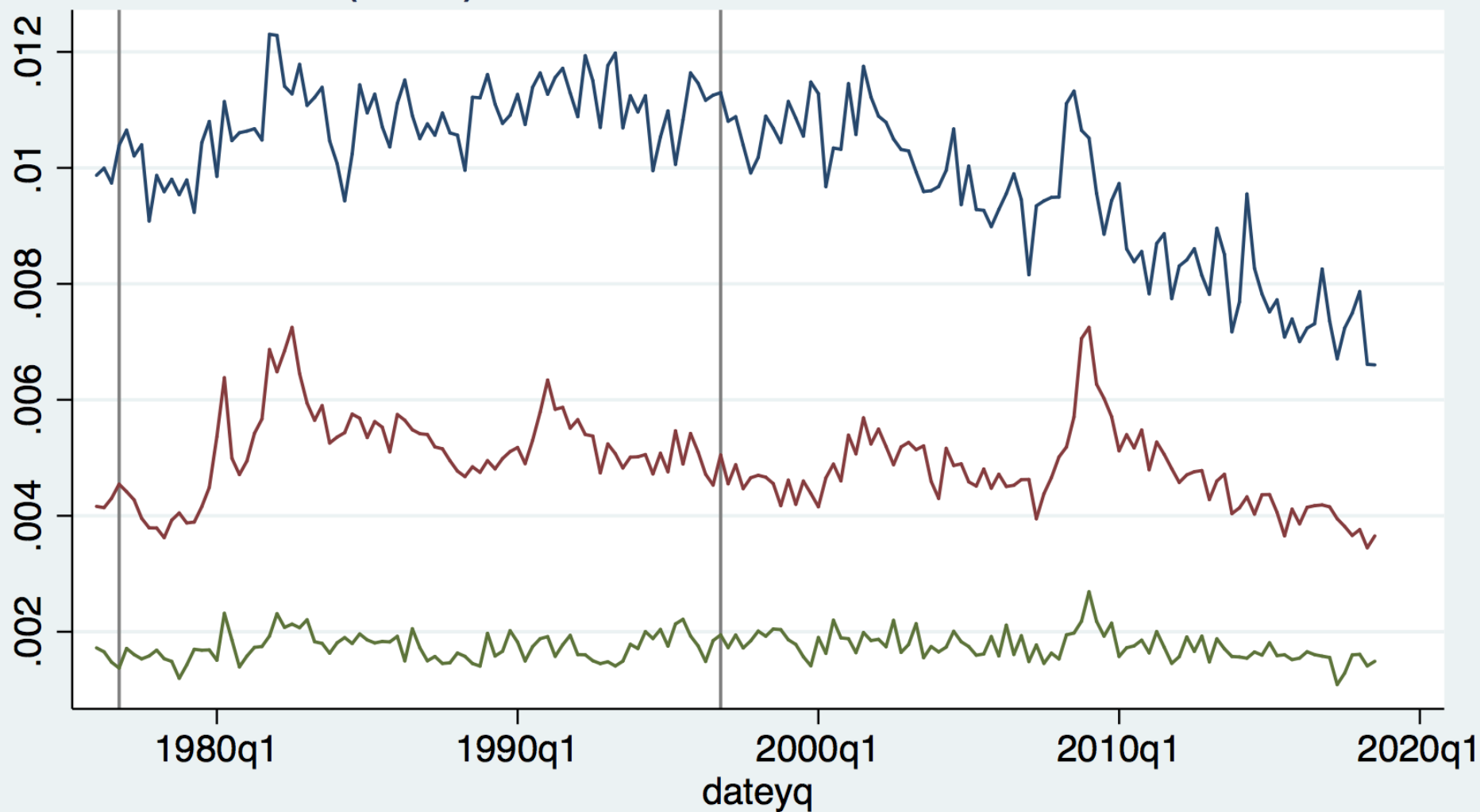
Separation (Men)



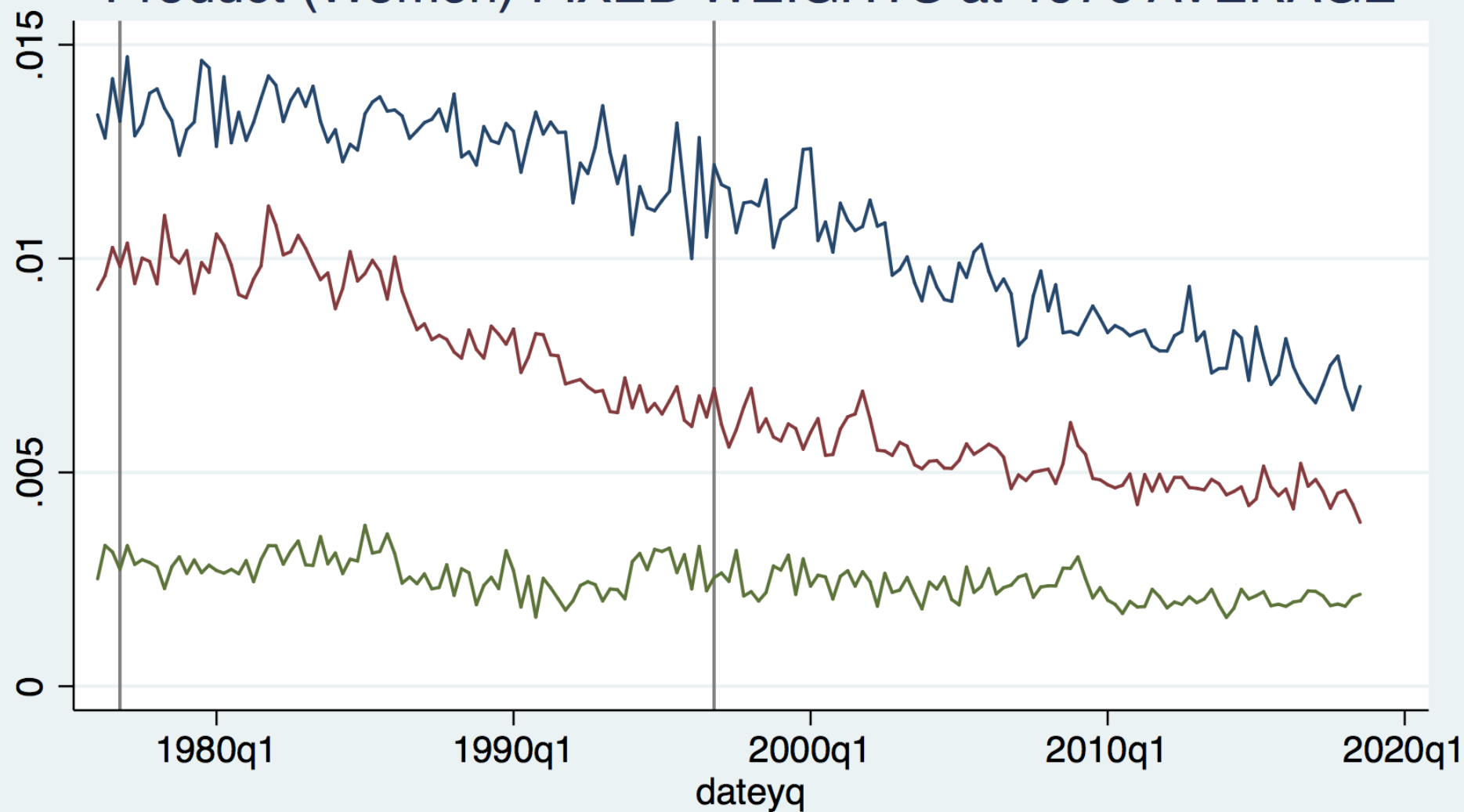
Separation (Women)



Product (Men) FIXED WEIGHTS at 1976 AVERAGE



Product (Women) FIXED WEIGHTS at 1976 AVERAGE



Changes in Separation Rates over Sub-periods

Note: Rates have been multiplied by 100

Variable: s_total

Change over 1976-1996: -.8

Change over 1996-2018: -1.24

Change over 1976-2018: -2.04

Variable: prods_m16to24

Change over 1976-1996: -.17

Change over 1996-2018: -.34

Change over 1976-2018: -.51

Variable: prods_m25to54

Change over 1976-1996: .13

Change over 1996-2018: -.2

Change over 1976-2018: -.06

Variable: prods_m55plus

Change over 1976-1996: .01

Change over 1996-2018: .03

Change over 1976-2018: .05

Variable: prods_f16to24

Change over 1976-1996: -.55

Change over 1996-2018: -.34

Change over 1976-2018: -.9

Variable: prods_f25to54

Change over 1976-1996: -.24

Change over 1996-2018: -.33

Change over 1976-2018: -.57

Variable: prods_f55plus

Change over 1976-1996: -.04

Change over 1996-2018: 0

Change over 1976-2018: -.03

Changes in Separation Rates over Sub-periods FIXED WEIGHTS at 1976 AVERAGE

Note: Rates have been multiplied by 100

Variable: prods_1976_m16to24

Change over 1976-1996: .12

Change over 1996-2018: -.42

Change over 1976-2018: -.29

Variable: prods_1976_m25to54

Change over 1976-1996: .05

Change over 1996-2018: -.12

Change over 1976-2018: -.06

Variable: prods_1976_m55plus

Change over 1976-1996: .02

Change over 1996-2018: -.02

Change over 1976-2018: 0

Variable: prods_1976_f16to24

Change over 1976-1996: -.2

Change over 1996-2018: -.45

Change over 1976-2018: -.65

Variable: prods_1976_f25to54

Change over 1976-1996: -.32

Change over 1996-2018: -.23

Change over 1976-2018: -.55

Variable: prods_1976_f55plus

Change over 1976-1996: -.03

Change over 1996-2018: -.05

Change over 1976-2018: -.08

Changes in Job-Finding Rates over Sub-periods

Note: Rates have been multiplied by 100

Variable: f_total

Change over 1976-1996: 9.449999999999999

Change over 1996-2018: -6.5

Change over 1976-2018: 2.95

Variable: prodf_m16to24

Change over 1976-1996: .34

Change over 1996-2018: -3.89

Change over 1976-2018: -3.54

Variable: prodf_m25to54

Change over 1976-1996: 6

Change over 1996-2018: -1.15

Change over 1976-2018: 4.84

Variable: prodf_m55plus

Change over 1976-1996: .28

Change over 1996-2018: 2.15

Change over 1976-2018: 2.43

Variable: prodf_f16to24

Change over 1976-1996: -1.47

Change over 1996-2018: -3.33

Change over 1976-2018: -4.81

Variable: prodf_f25to54

Change over 1976-1996: 4.16

Change over 1996-2018: -2.47

Change over 1976-2018: 1.68

Variable: prodf_f55plus

Change over 1976-1996: .25

Change over 1996-2018: 1.76

Change over 1976-2018: 2.02