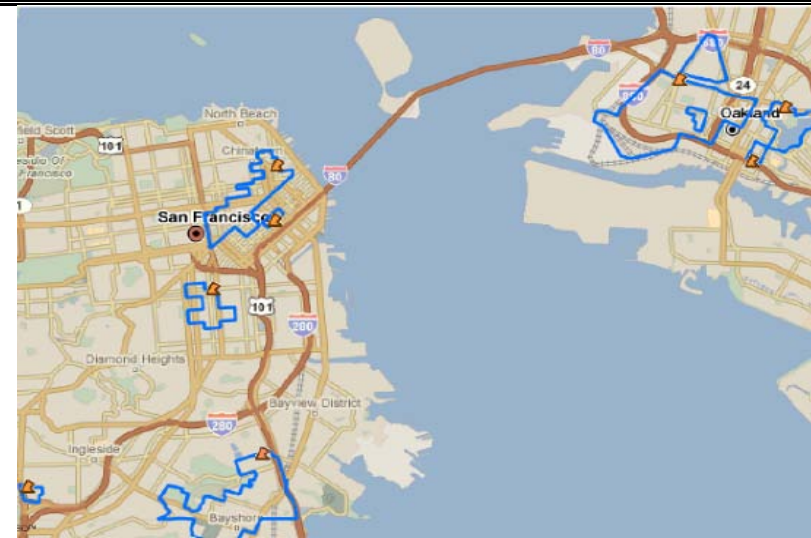


San Francisco/Oakland Metro Area



Cities of San Francisco/Oakland

Communities with low access to supermarkets outlined in blue

Low Access Area (LAA) Characteristics	San Francisco/Oakland metro area		All 10 metro areas	
	Total	%	Total	%
Population	212,510	4.9 (% of metro)	1,735,018	4.8 (% of metro)
Black/African American	43,604	20.5 (% of LAA pop)	510,188	29.4 (% of LAA pop)
Hispanic	77,345	36.4 (% of LAA pop)	546,233	31.5 (% of LAA pop)
Asian	46,052	21.7 (% of LAA pop)	87,333	5.0 (% of LAA pop)
Population outside central city	92,803	43.7 (% of LAA pop)	865,287	49.9 (% of LAA pop)
Estimated grocery demand (\$M)	\$404		\$3,039	
Estimated grocery expenditure leakage (\$M)	\$338	83.8 (% of demand)	\$2,703	89.0 (% of demand)
Large low-access clusters	7		62	
Estimated grocery expenditure leakage	\$279	82.3 (% of all LAA leakage)	\$1,924	71.2 (% of all LAA leakage)
Average supermarkets supported	17		108	

Notes: Low Access Areas are identified as low- and moderate-income census block groups located considerably farther from the nearest supermarket than middle- and higher-income block groups with similar level of population density and rate of car ownership. Large low-access clusters have estimated grocery expenditure leakage of at least \$13.7 million annually. See www.trfund.com/resource/policypubs.html#LAA for more details on methodology. Metropolitan areas studied include: Atlanta, Baltimore, Cleveland, Jackson (MS), Las Vegas, Little Rock, Los Angeles, Louisville, Phoenix, and San Francisco/Oakland.

Source: Analysis by the Brookings Institution and The Reinvestment Fund (2010)