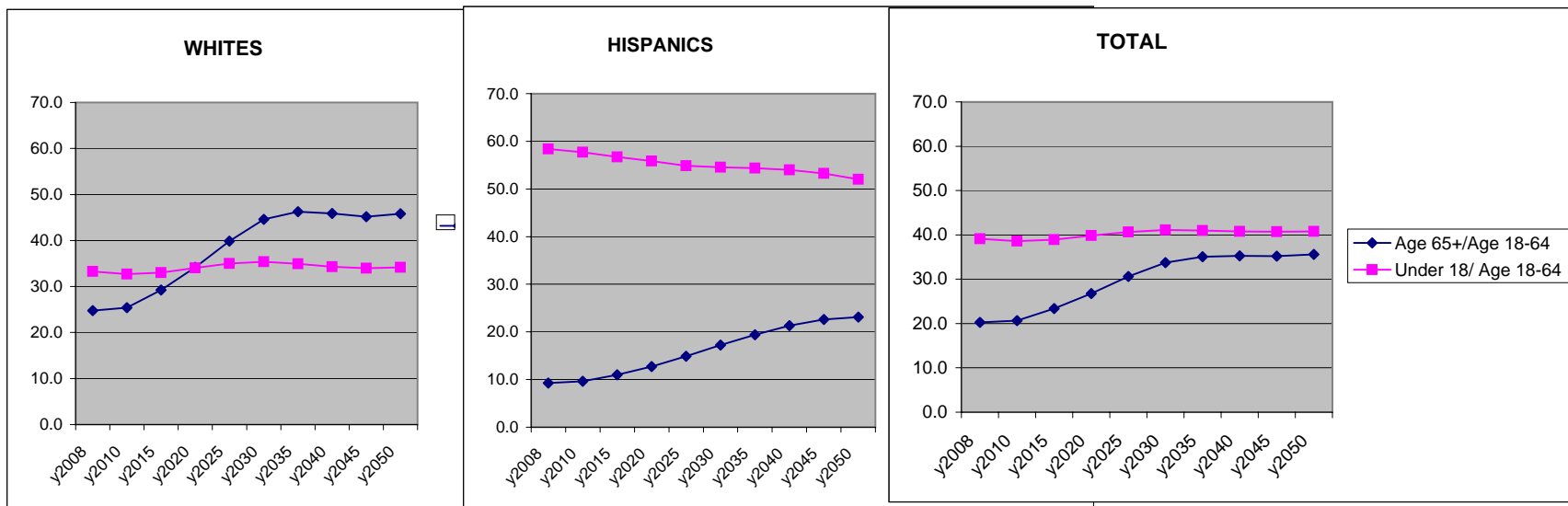


Figure 3: Age Dependency Vs Youth Dependency, 2008-2050



**Figure 3: Age Dependency Vs Child Dependency, 2008-2050**

A. Whites:		y2008	y2010	y2015	y2020	y2025	y2030	y2035	y2040	y2045	y2050
	Age 65+/Age 18-64	24.8	25.4	29.2	34.1	39.9	44.6	46.3	45.9	45.2	45.8
	Under 18/ Age 18-64	33.3	32.7	33.0	34.0	35.0	35.4	35.0	34.3	34.0	34.2
B. Hispanics:		y2008	y2010	y2015	y2020	y2025	y2030	y2035	y2040	y2045	y2050
	Age 65+/Age 18-64	9.3	9.6	11.0	12.8	14.9	17.3	19.4	21.3	22.6	23.1
	Under 18/ Age 18-64	58.4	57.7	56.7	55.8	54.9	54.6	54.3	54.0	53.2	52.0
C. Total Population		y2008	y2010	y2015	y2020	y2025	y2030	y2035	y2040	y2045	y2050
	Age 65+/Age 18-64	20.3	20.7	23.3	26.7	30.6	33.8	35.0	35.3	35.2	35.6
	Under 18/ Age 18-64	39.1	38.6	38.9	39.9	40.7	41.1	41.0	40.8	40.7	40.8