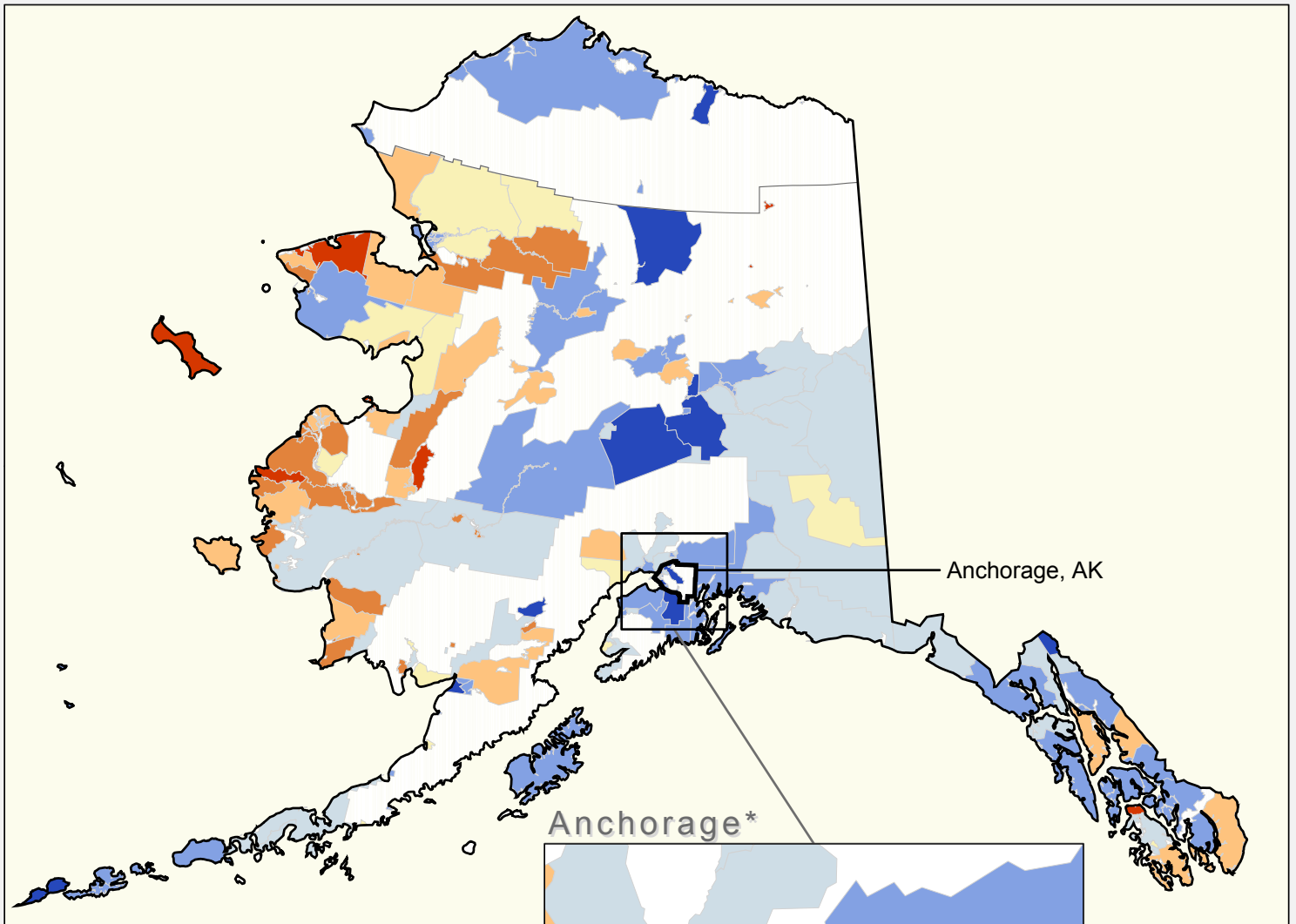


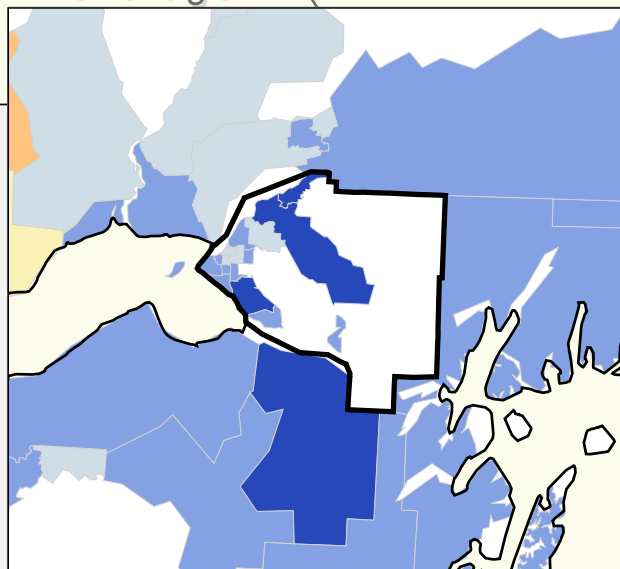
Alaska

EITC Recipients as a Percentage of Total Returns by Zip Code, TY 2001

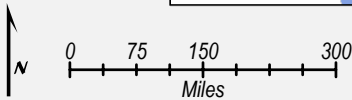
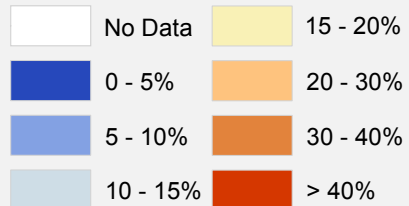


Anchorage*

Anchorage, AK



Percentage Recipients



- Metro Boundary
- City Boundary
- County Boundary
- Zip Code Boundary

*the metro and city boundaries are the same

Percentage Recipients

Large City	Large Suburb	Small Metro	Rural
N/A	N/A	8.1%	10.2%