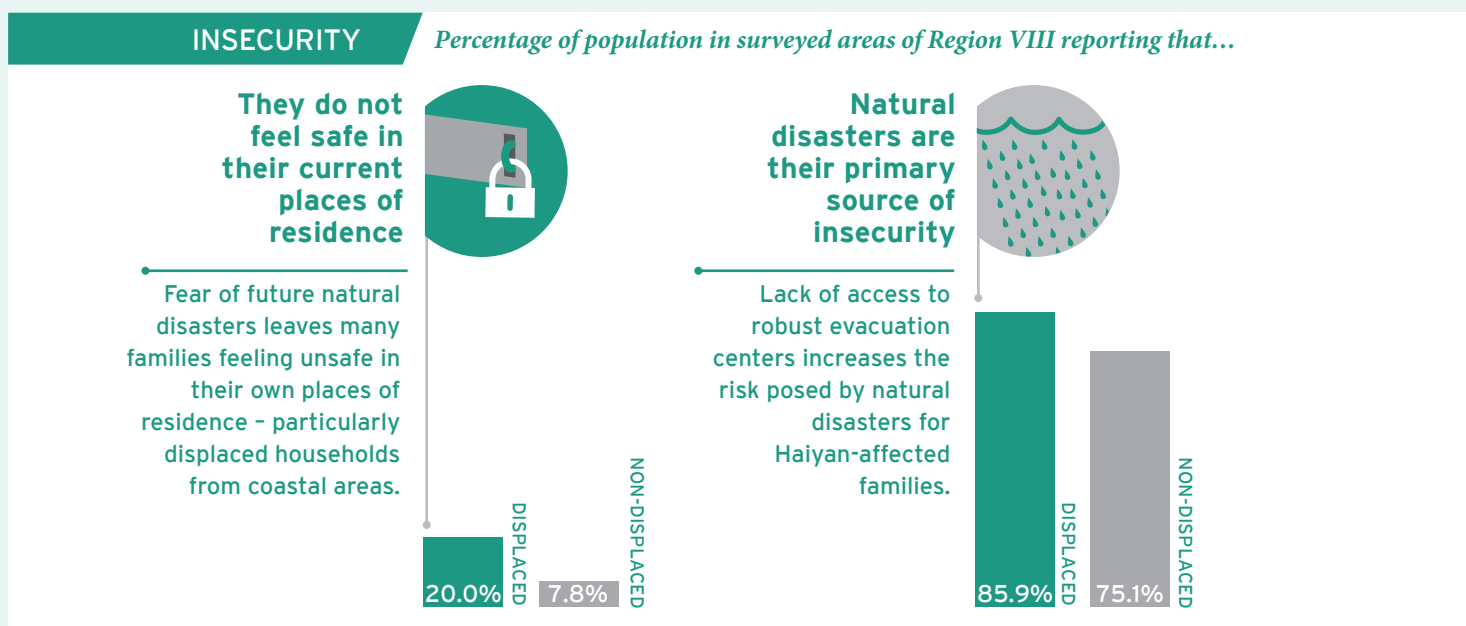
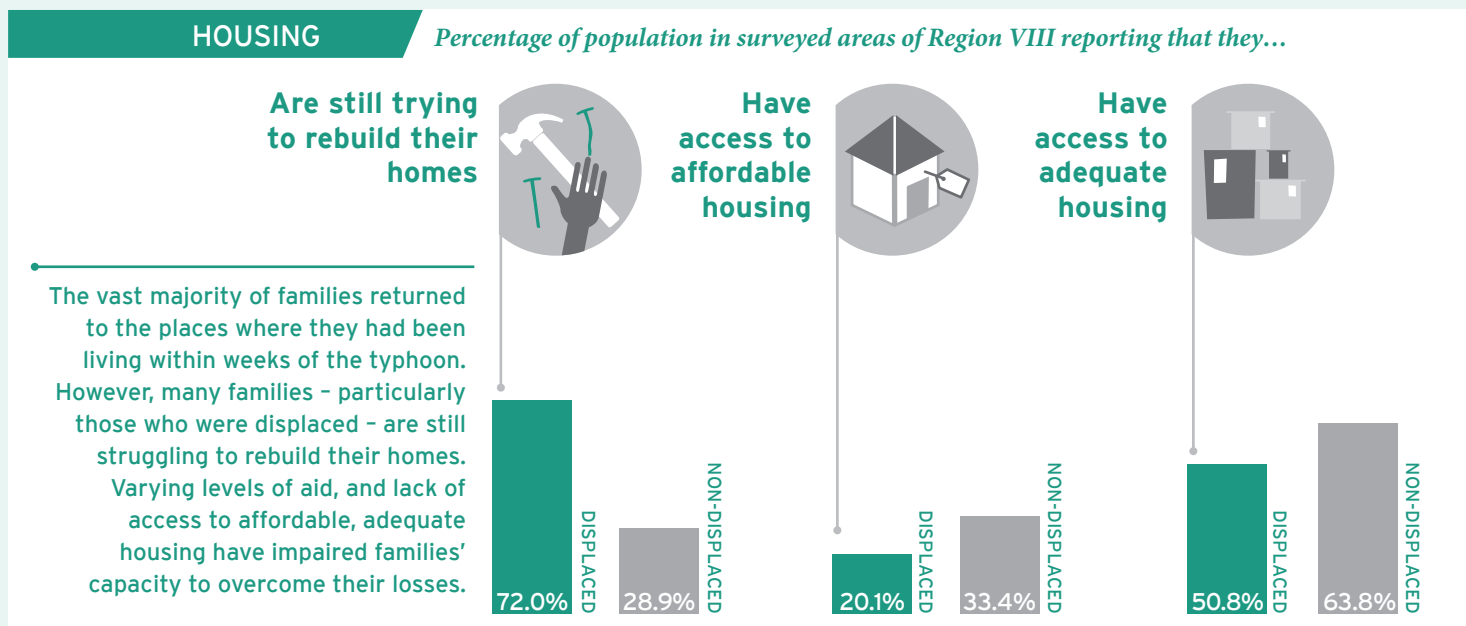
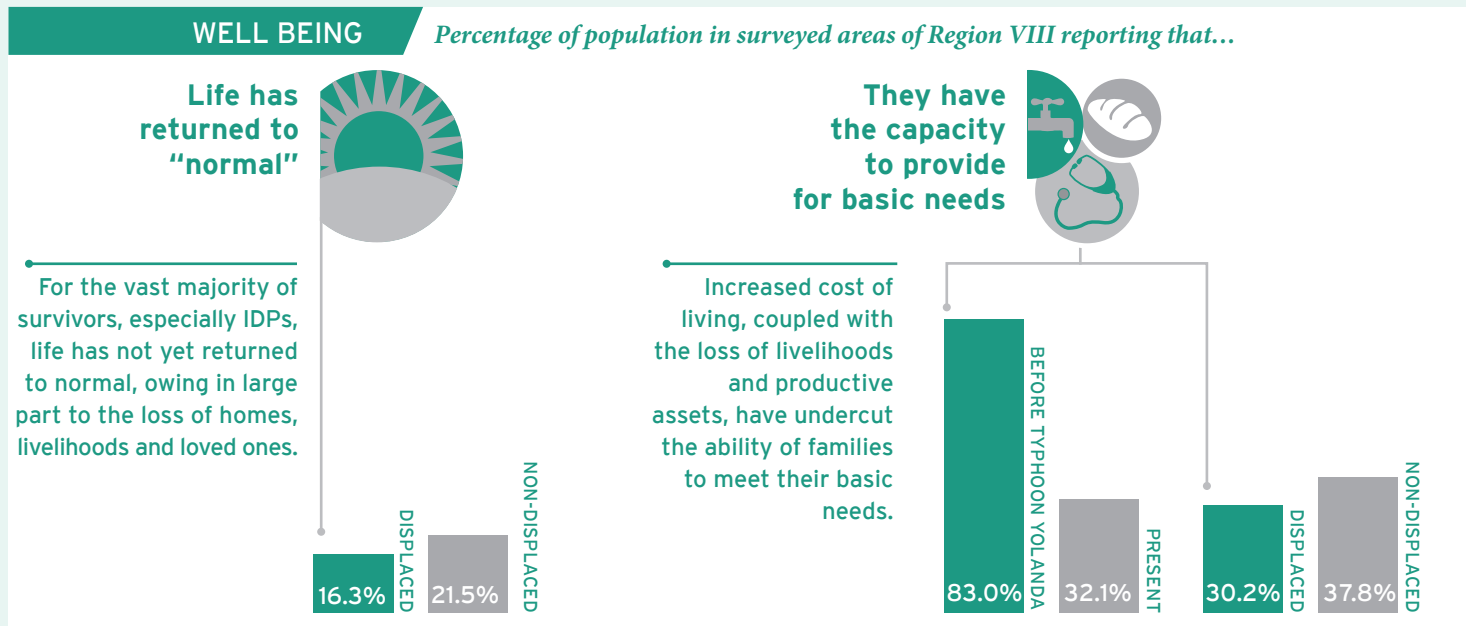


Resolving post-disaster displacement

Insights from the Philippines after Typhoon Haiyan (Yolanda)



LIVELIHOODS

Percentage of population in surveyed areas of Region VIII reporting that...

Their livelihood situation has declined



Loss of livelihoods and productive assets is a primary concern for Haiyan-affected families, especially IDPs who struggle disproportionately to access credit.

73.9%

They lost productive assets



60.7%

They cannot access credit



DISPLACED
27.4%

NON-DISPLACED
19.7%

ASSISTANCE & RECOVERY PLANS

Percentage of population in surveyed areas of Region VIII reporting that they feel that...

Assistance has been fairly distributed



Displaced and non-displaced families alike question the fairness of aid distribution and the extent to which their needs and preferences have been heard. Many families express strong preference for community-based assistance efforts that address livelihood concerns.

45.5%

National recovery and reconstruction plans represent their needs and preferences



54.1%