

DC Primary Care Association

Medical Homes DC

January 28, 2005

Assessing the Primary Care Safety Net Needs and Health Disparities

Nicole Lurie, RAND Corporation

Martha Ross, Brookings Institution

Allison Coleman, Capital Link Corporation

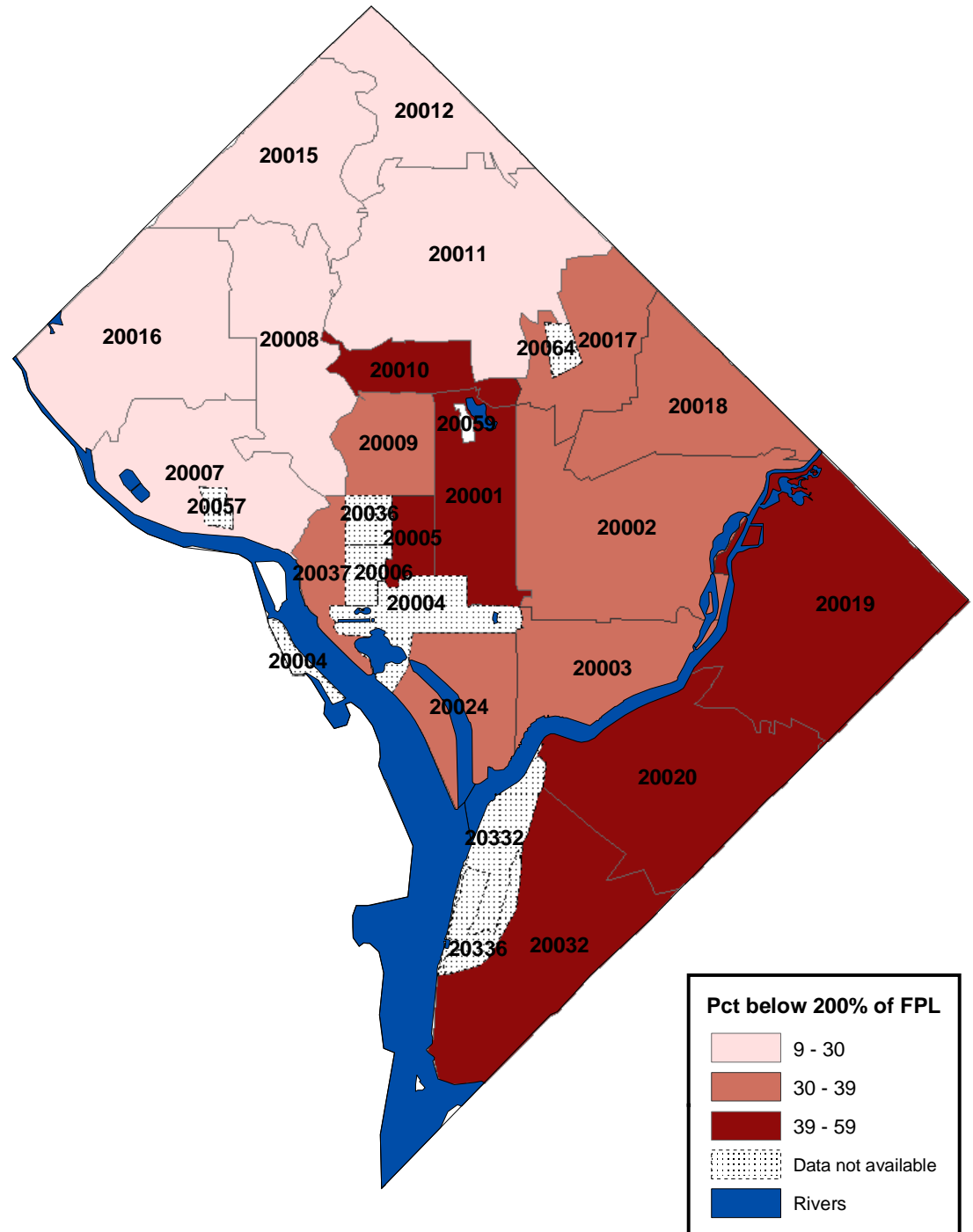
Guiding Research Questions

- ❑ Where is the need for medical care the greatest?
- ❑ Where is the supply of medical care limited?
- ❑ What are the conditions of health centers' physical facilities?
- ❑ What is the financial and planning capacity of health centers to expand and/or renovate their current facilities?

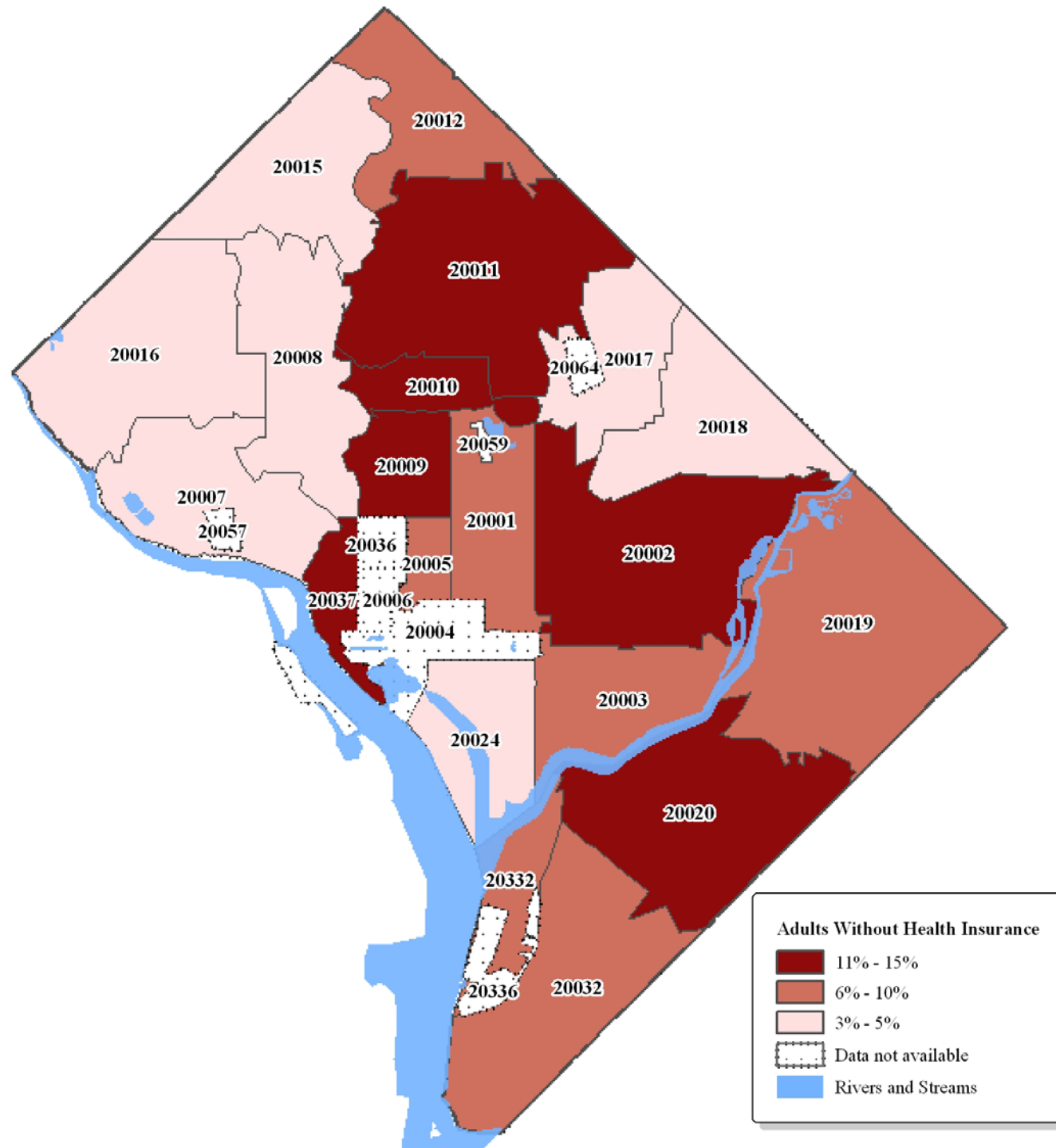
Key Findings

- ❑ Low-income residents consistently have worse health outcomes and less access to health care.
- ❑ Low-income areas of the city have fewer primary care providers (including both private providers and community health centers).
- ❑ There is not a “standard” DC community health center– investment strategies must recognize this.
- ❑ Health centers have significant capital needs, both for renovation and new construction, and varying levels of readiness to take on debt.
- ❑ There is also good news – “avoidable hospitalizations” are going down, especially for kids who live in high-poverty areas of the city.

Percent of residents below 200% of the federal poverty level by zip code, 2000

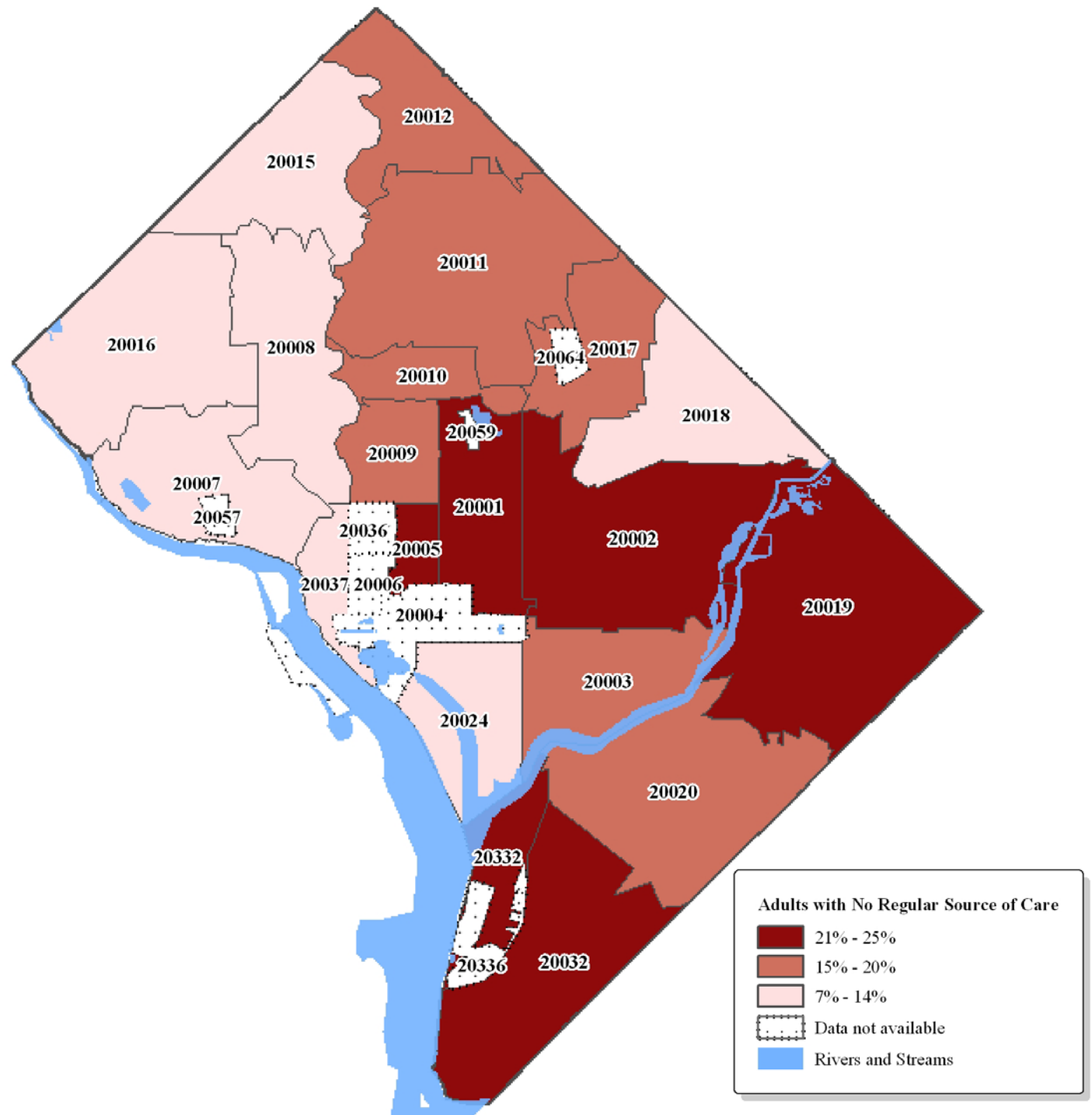


Percent of adults without health insurance, 2001-2002



Percent of adults with no regular source of care, 2001-2002

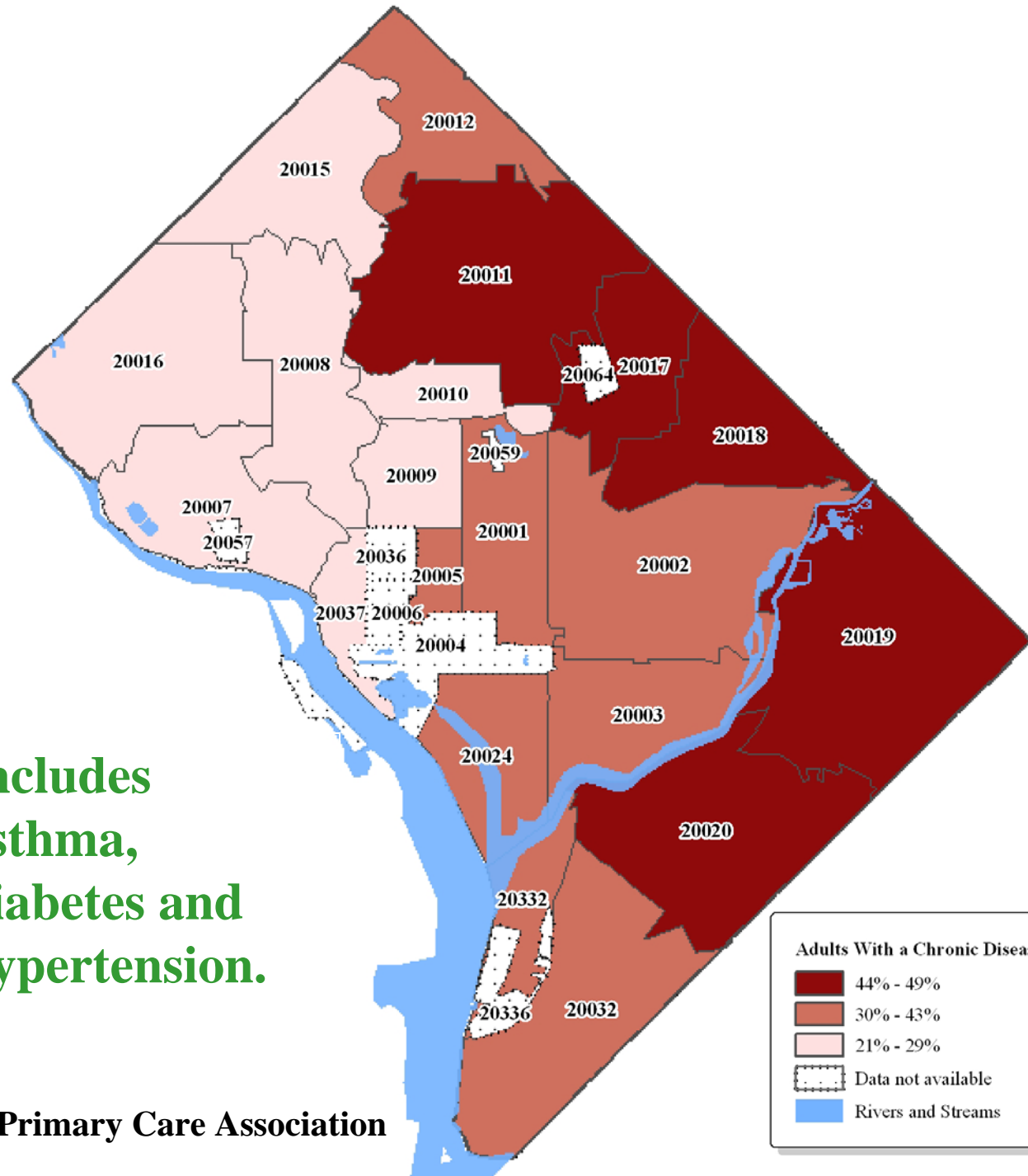
“Regular source of care” includes doctors’ offices, health centers, and outpatient hospital departments.



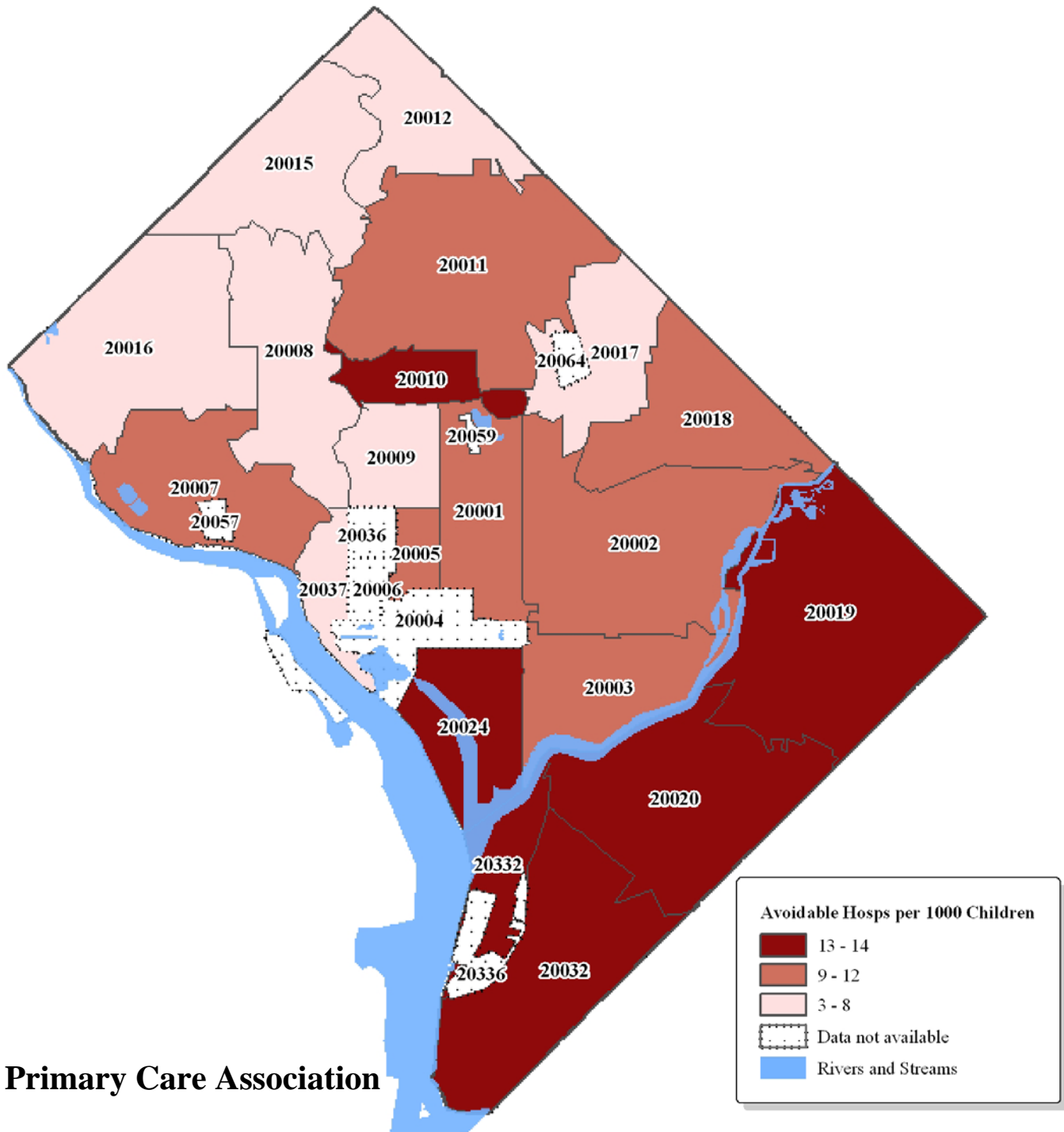
Adult chronic disease burden, 2001-2002

Includes asthma, diabetes and hypertension.

DC Primary Care Association

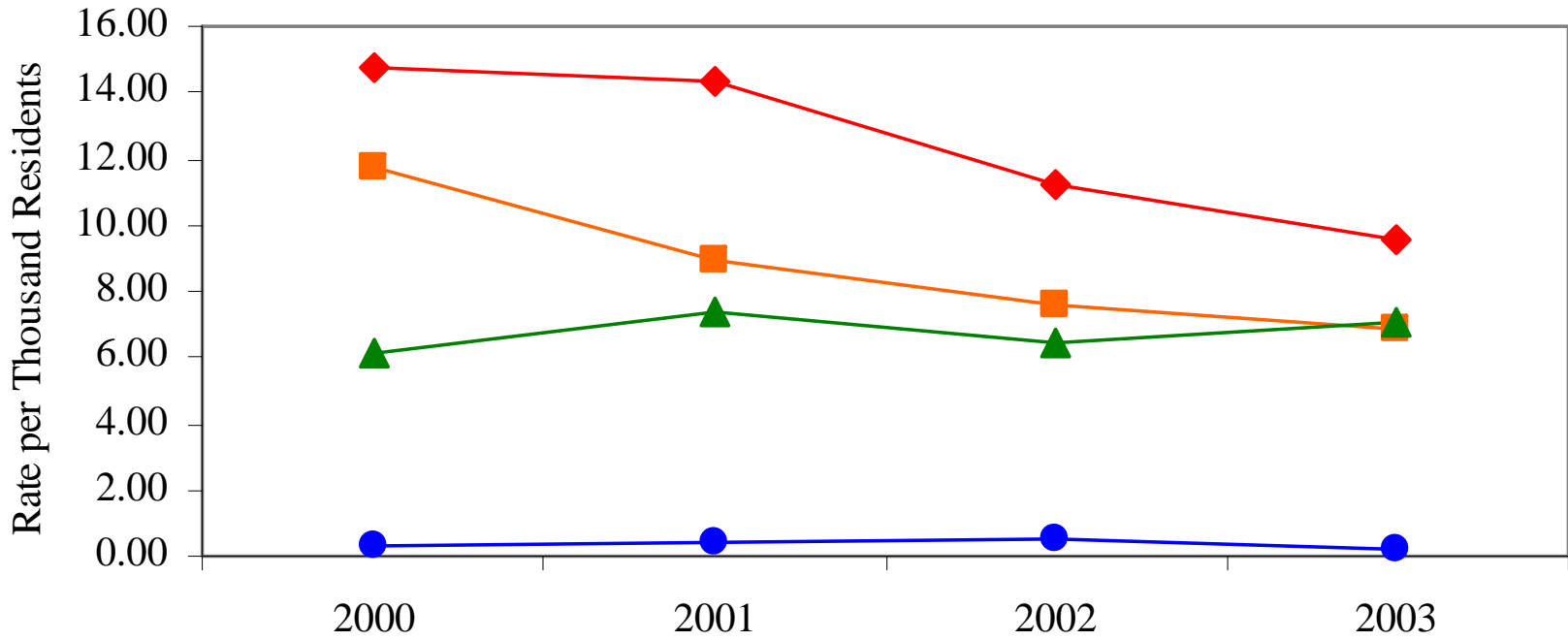


Avoidable hospitalization rates among kids 0-17, 2000-2003



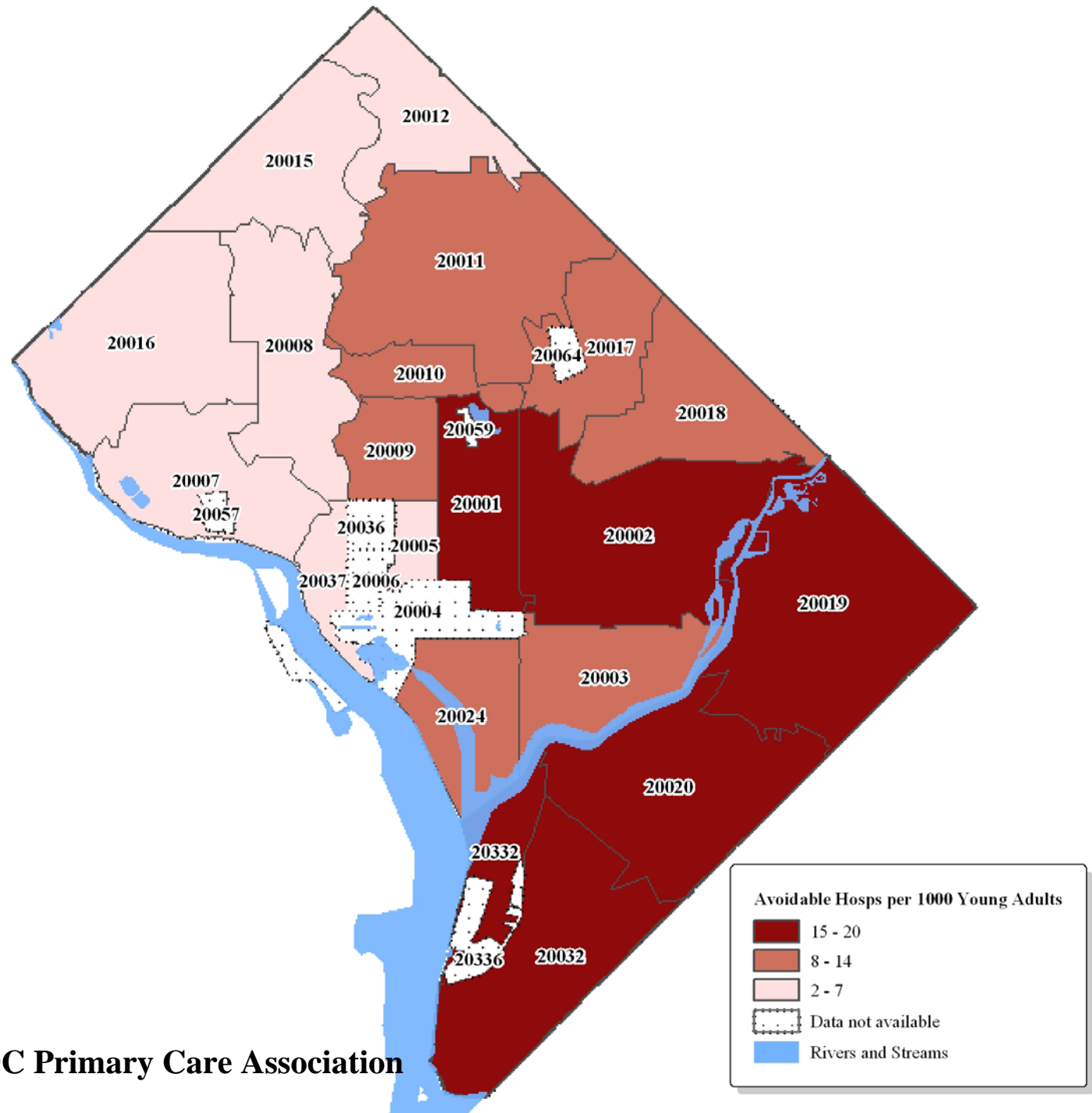
DC Primary Care Association

Avoidable hospitalizations among kids, by poverty rate of home zip code, 2000-2003

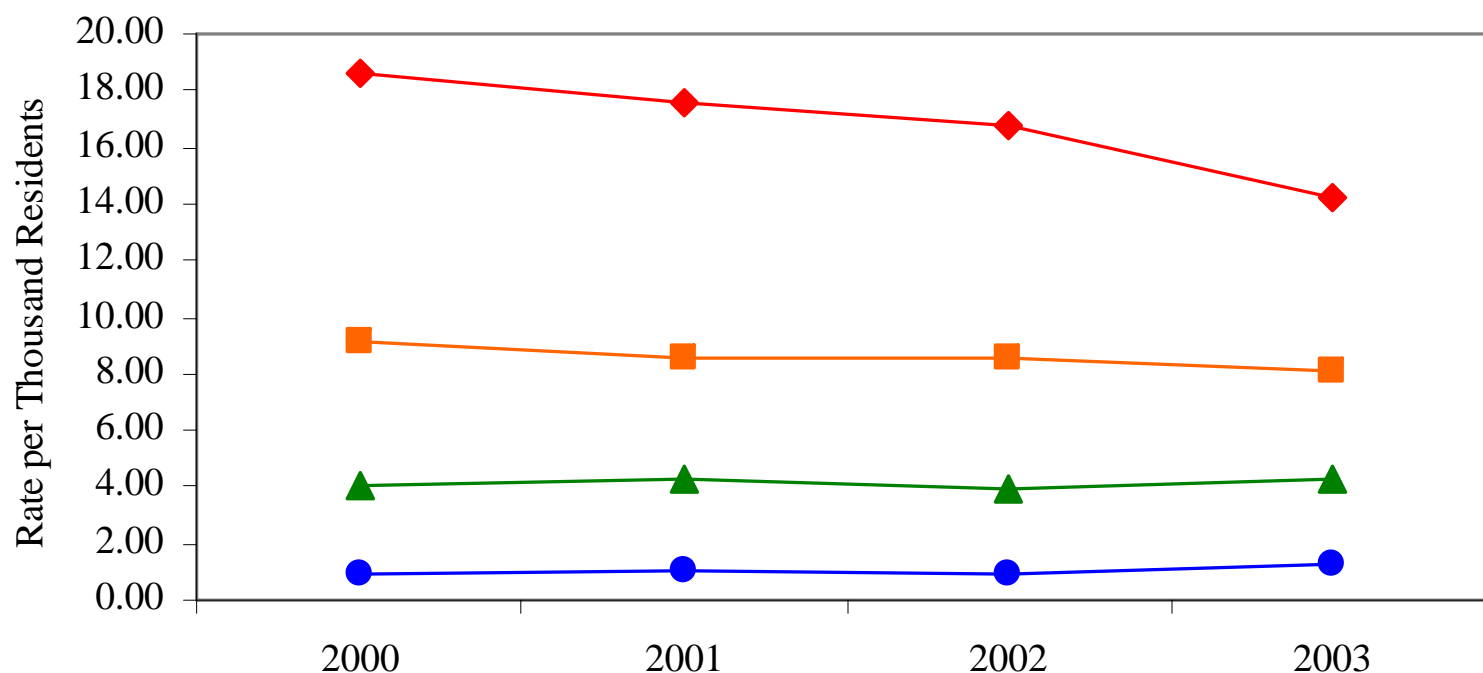


- ◆ Avoidable admissions, high-poverty zip codes (43-59% below 200% of the FPL)
- Avoidable admissions, medium-poverty zip codes (30-39% below 200% of the FPL)
- ▲ Avoidable admissions, low poverty zip codes (9-30% below 200% of the FPL)
- Marker (unavoidable) admissions, all zip codes

Avoidable hospitalizations among adults 18-39, 2000-2003

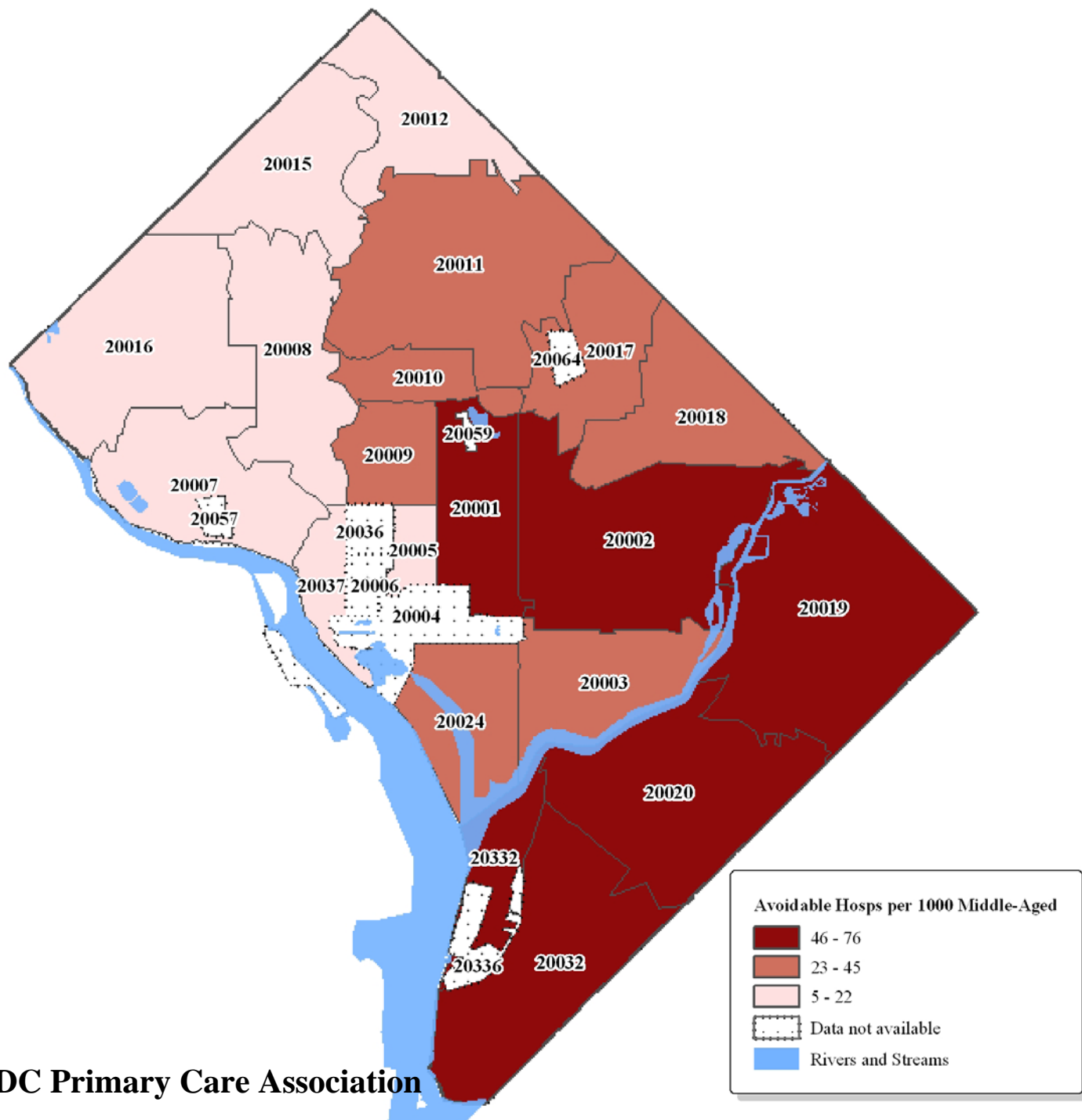


Avoidable hospitalizations among adults 18-39, by poverty rate of home zip code, 2000-2003



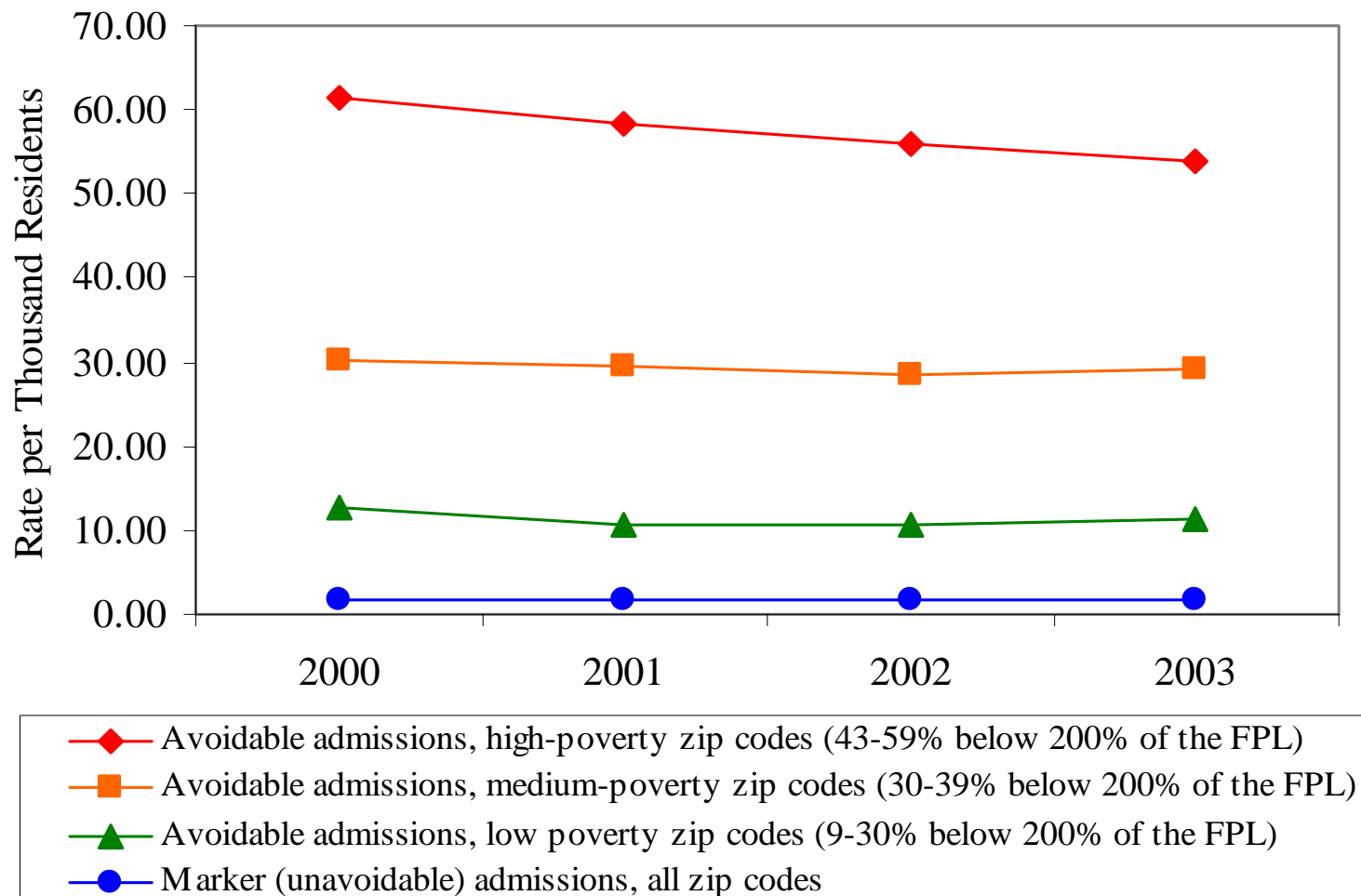
- ◆ Avoidable admissions, high-poverty zip codes (43-59% below 200% of the FPL)
- Avoidable admissions, medium-poverty zip codes (30-39% below 200% of the FPL)
- ▲ Avoidable admissions, low poverty zip codes (9-30% below 200% of the FPL)
- Marker (unavoidable) admissions, all zip codes

Avoidable hospitalizations among adults 40-64, 2000-2003

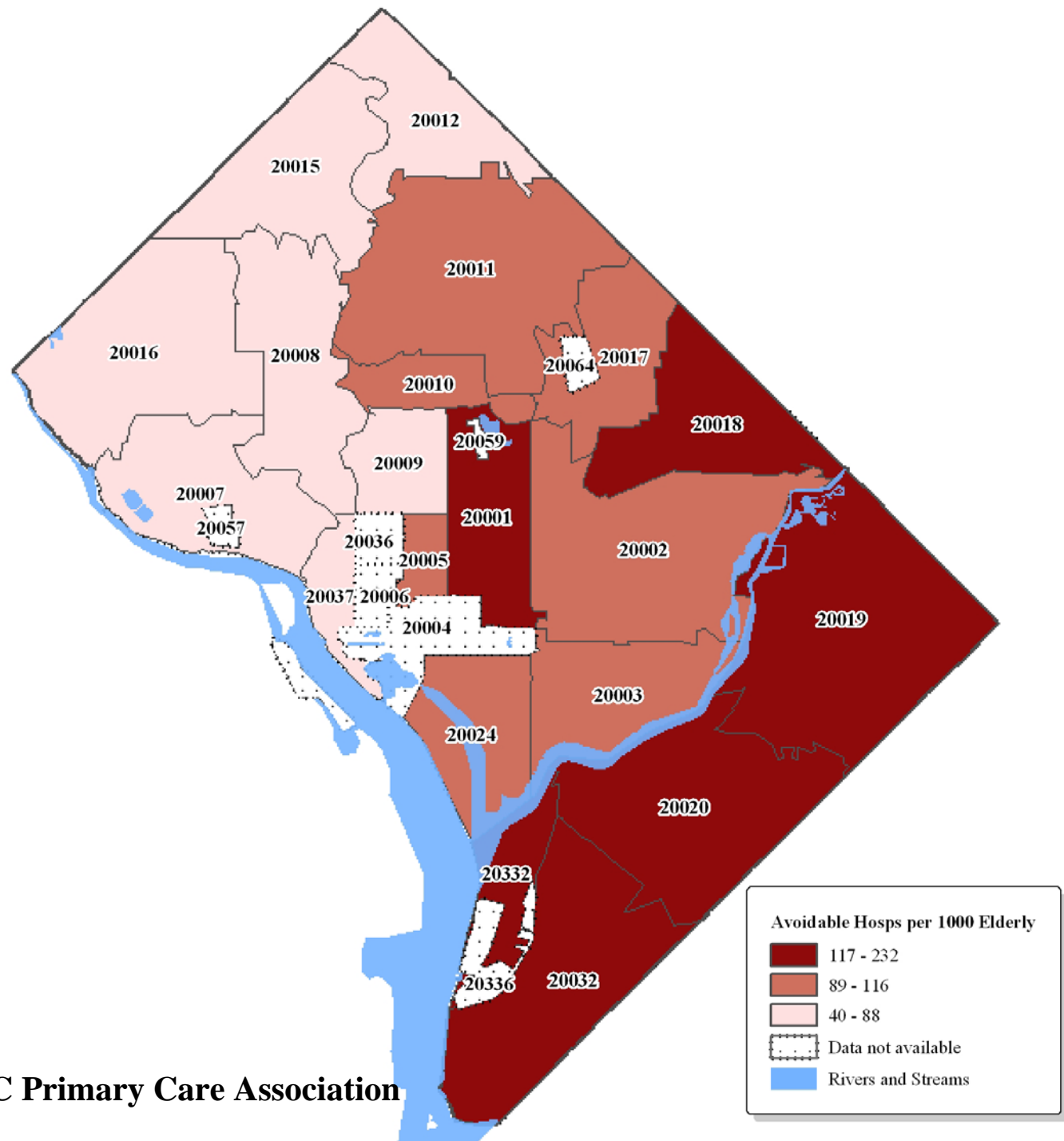


DC Primary Care Association

Avoidable hospitalizations among adults 40-64, by poverty rate of home zip code, 2000-2003

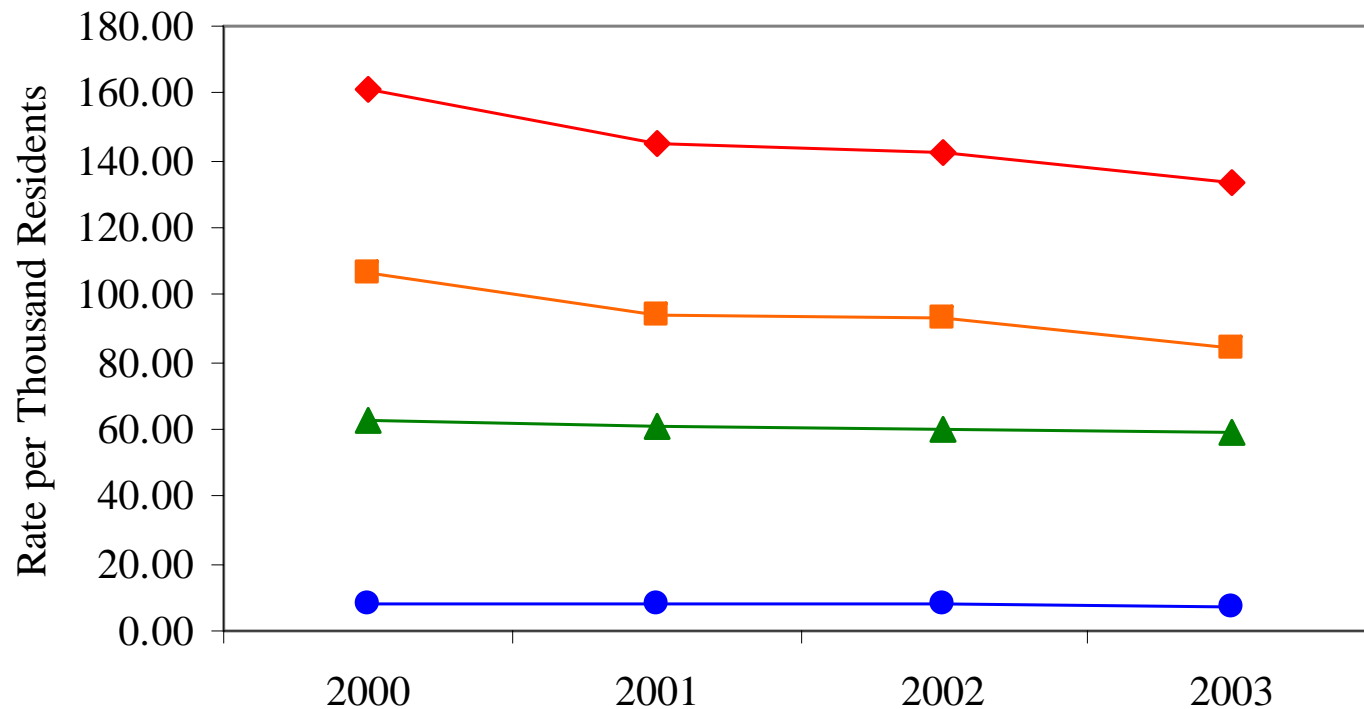


Avoidable hospitalizations among adults 65-99, 2000-2003



DC Primary Care Association

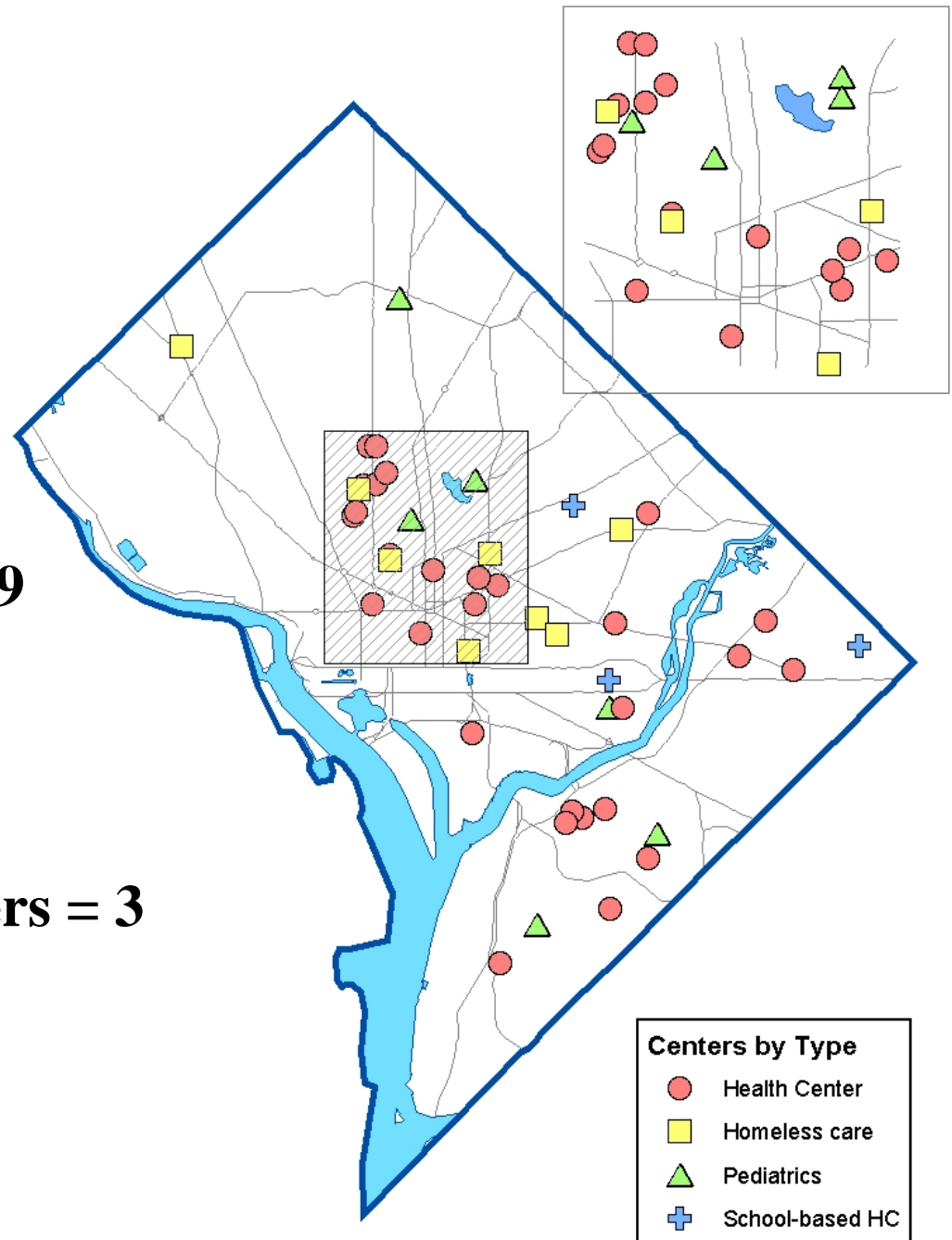
Avoidable hospitalizations among adults 65-99, by poverty rate of home zip code, 2000-2003



- ◆— Avoidable admissions, high-poverty zip codes (43-59% below 200% of the FPL)
- Avoidable admissions, medium-poverty zip codes (30-39% below 200% of the FPL)
- ▲— Avoidable admissions, low poverty zip codes (9-30% below 200% of the FPL)
- Marker (unavoidable) admissions, all zip codes

Community health centers by type, 2004

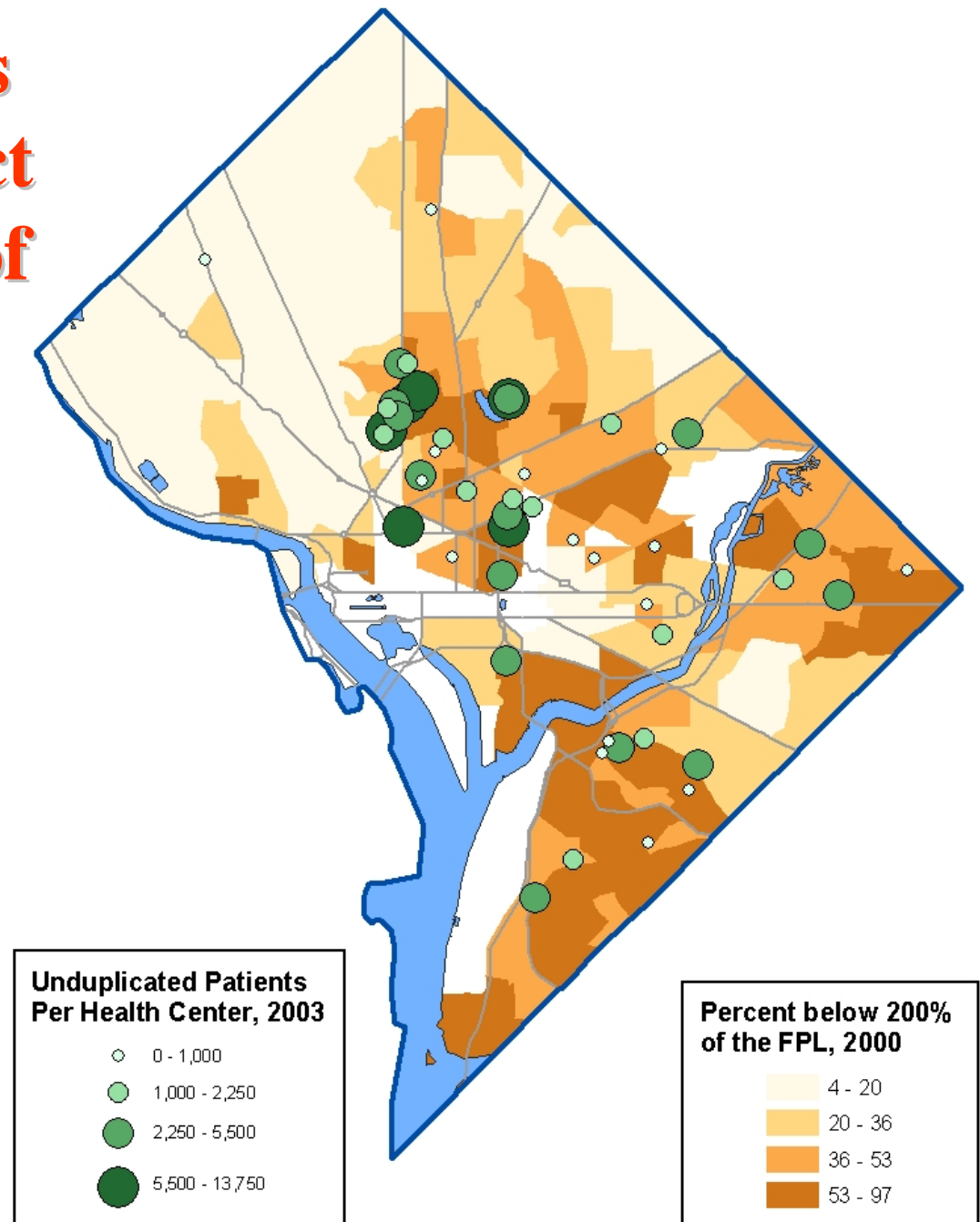
- General primary care = 29
- Homeless shelters = 9
- Pediatrics = 6
- School-based health centers = 3
- Mobile Vans = 5



Size of health centers (# of patients) and pct of pop below 200% of FPL

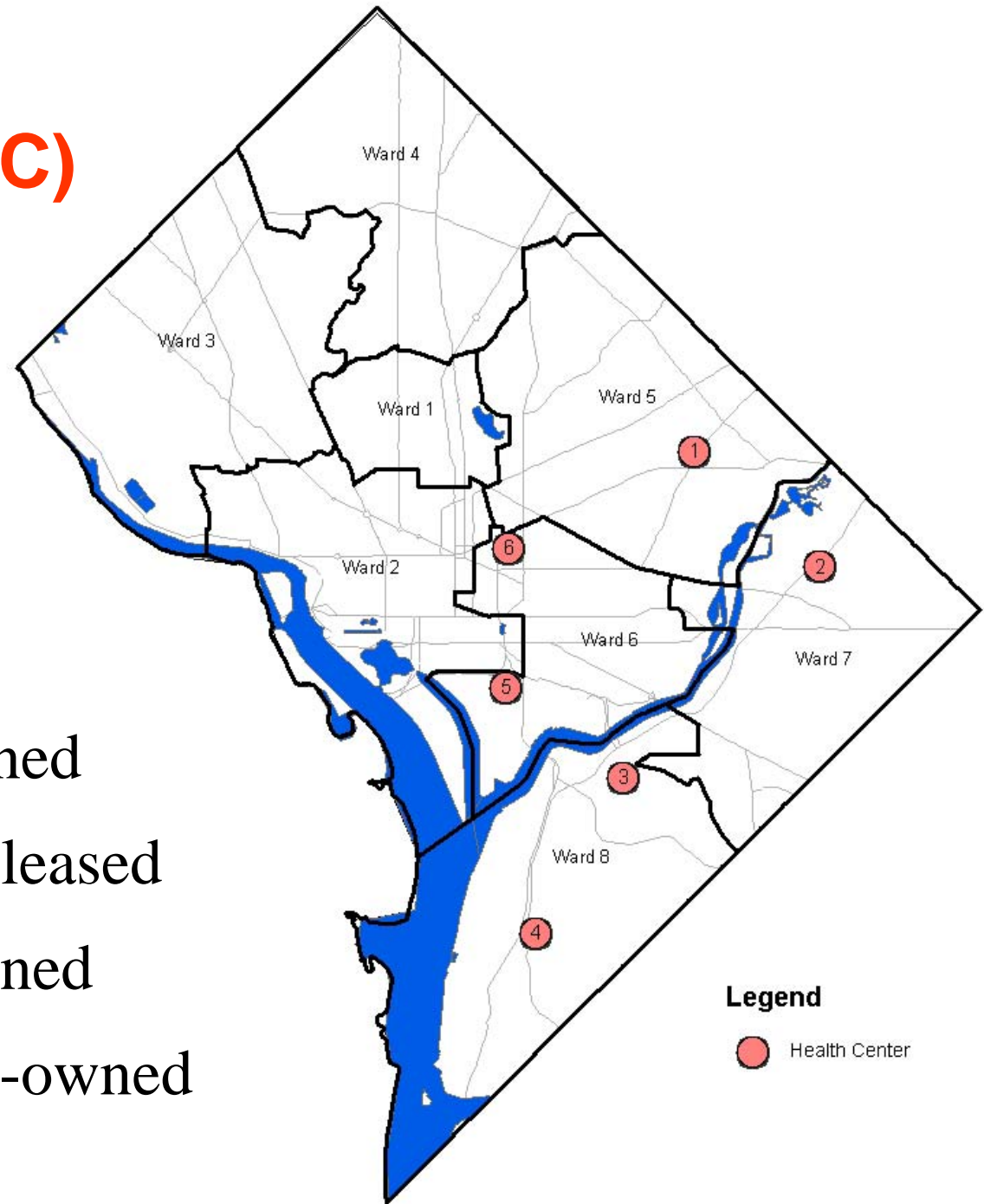
❑ More/bigger centers in
the central part of the city

❑ Fewer/smaller centers
in other parts of the city –
Northeast and East of the
Anacostia River



Former Public Benefit Corp. (PBC) Health Centers

- 1) **Woodridge**, leased
- 2) **Hunt Place**, leased
- 3) **Anacostia**, city-owned
- 4) **Congress Heights**, leased
- 5) **Southwest**, city-owned
- 6) **Walker-Jones**, city-owned

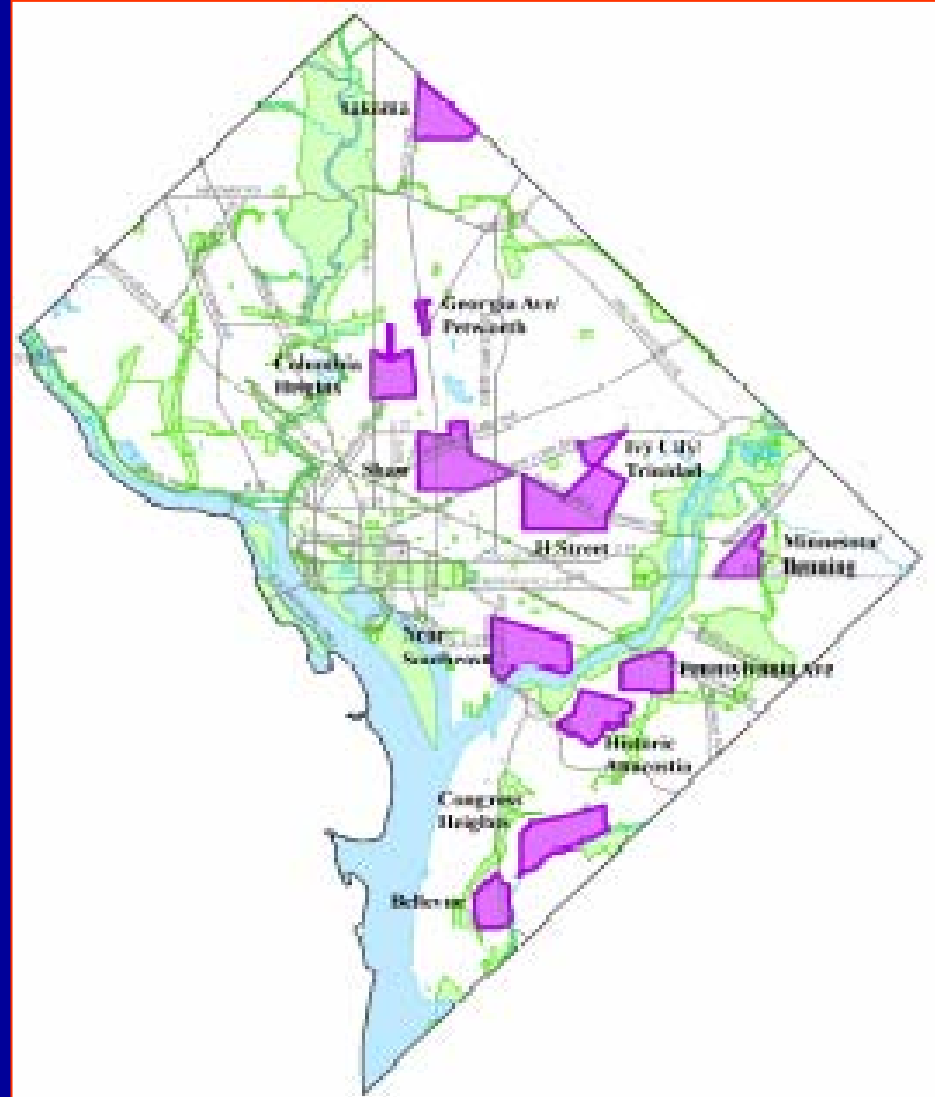


Linking Medical Homes to DC Community Development

- ❑ Strategic Neighborhood Investment Program
- ❑ New Communities Initiative (Sursum Corda?)
- ❑ "Hot Spots"
- ❑ Neighborhood Development Planning (H St. NE corridor, Anacostia)
- ❑ Project Development Requirements in City RFPs
- ❑ Commercial Corridor Revitalization (Main Streets program)

Strategic Neighborhood Investment Program

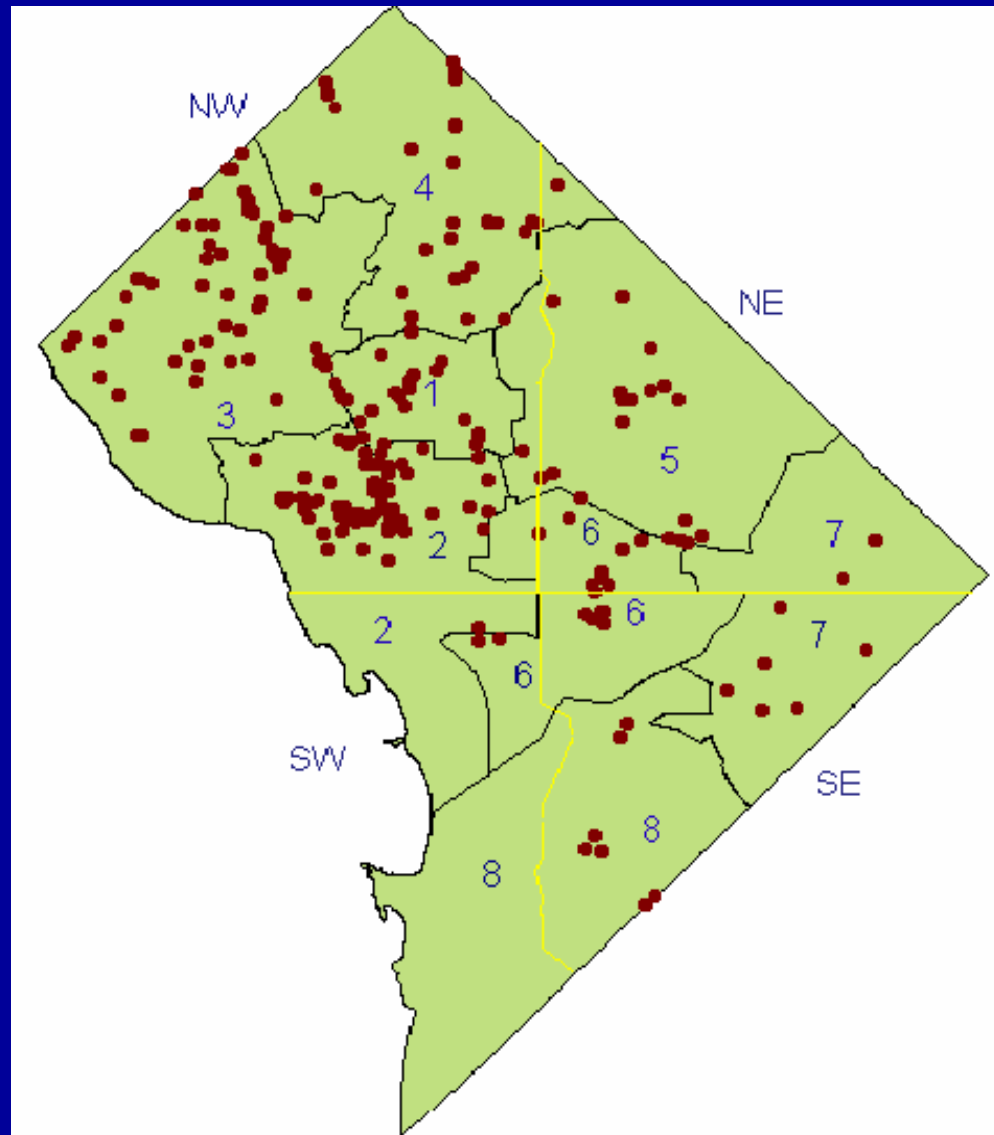
- ❑ Focus city resources on neighborhoods that can leverage private/nonprofit investments achieving visible outcomes in 3-5 years.
- ❑ Overlaps with areas needing expanded health center services/ facilities (including neighborhoods with and without existing health centers).



Location of Doctors' Offices by Ward and Quadrant, 2003

<u>Ward</u>	<u># of establishments</u>
-------------	----------------------------

1	30
2	252
3	126
4	59
5	131
6	38
7	10
8	29
<hr/>	
	675



Estimating space needs for health centers

- ❑ Health centers currently occupy **267,012** sf of clinical and administrative space.
- ❑ Of this, only **80,518** sf (31%) is "high quality space," based upon information provided by DCPCA.
- ❑ The remaining 69% of space (186,494 sf) is suboptimal and/or inefficient for the delivery of primary care.

Assumptions for calculating space needs:

- ❑ Medically needy population of **210,000 to 240,000** people
- ❑ Population per provider: **1,500: 1** (Ideal) (*BPHC standards*)
- ❑ Average visits per user of **4.02** (*BPHC Average 1999–2003*)
- ❑ Total visits per provider of **4,200** per year (*BPHC Standard*)
- ❑ Total square footage per provider of **1,650 square feet.** (*Capital Link benchmark*)
- ❑ Visits per square foot **2.0** (*Capital Link benchmark*)

Space Needs: Conclusions

Overall system needs for primary care range from **231,000 to 482,000 sf**

Given that ~ 80,000 sf existing space is "high quality space," system needs to **add an additional 151,000 to 402,000 sf of high quality space**

Space Needs: Conclusions Continued...

- ❑ Could be accomplished mainly through replacement of suboptimal space (186,000 sf)
- ❑ Adding/replacing 151,000 – 402,000 sf will cost ~ **\$30 – \$80 million**, not including site acquisition
- ❑ High side of range is probably more accurate since space estimates for dental and MH not included

Current health center capital plans*

Most likely to move ahead in 2005

# of projects	Ward
1	1
1	2
1	4
1	6
1	8

Most likely to move ahead in 2006-2009

# of projects	Ward
2-4	1
1	2
1	4
1	5/6
1	7
2	8

*Includes both expansions/renovations of current facilities as well as new facilities. Projects are in varying stages of planning. In some cases a site is already identified.

Integrating data at the zip code level

Identifying areas with:

- * High poverty levels
- * Poor health indicators
- * Limited access to care

Focus on the community development opportunities in those areas to link with Health Centers

Key indicators for Zip Code 20019

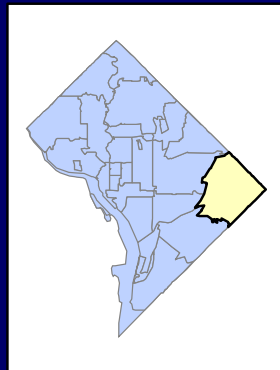
Population: 52,686
% below FPL: 29%
% below 200% FPL: 48%

Avoidable hospitalizations:
High for all ages

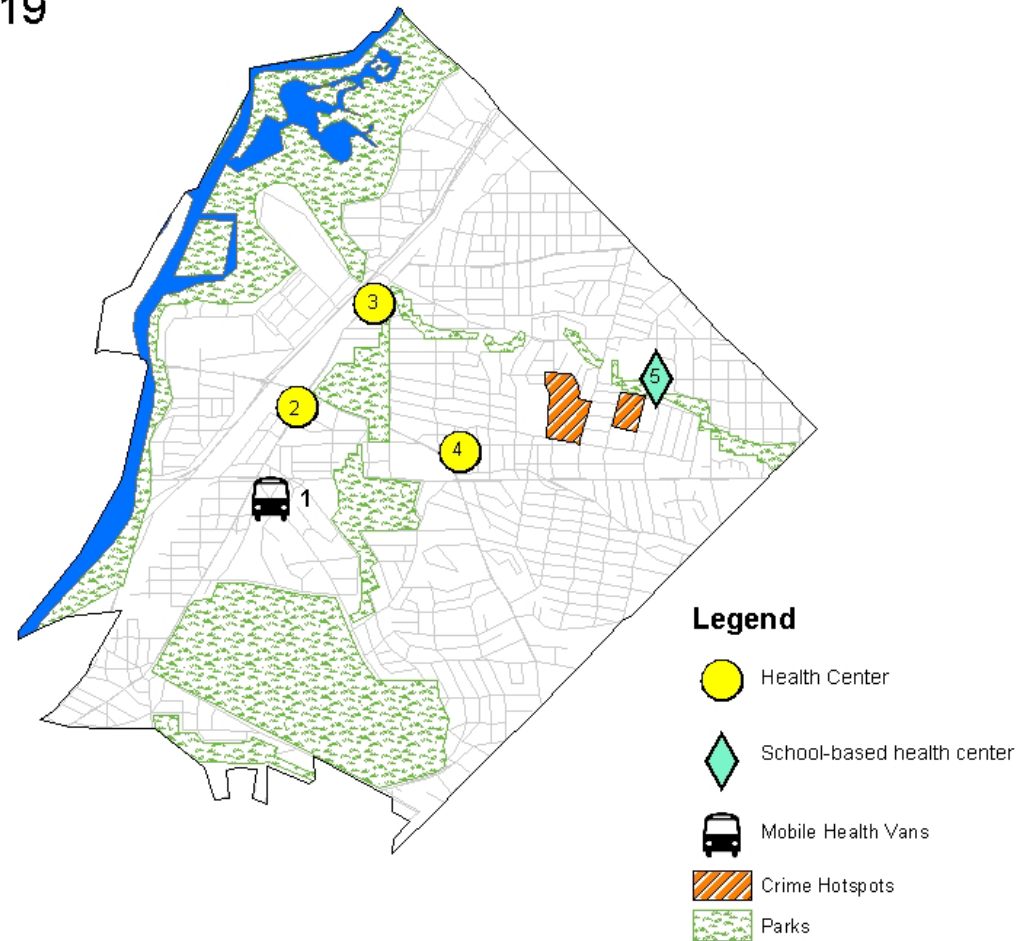
Chronic disease burden:
High

Uninsurance: Medium

No regular source of care:
High



20019



- 1) Children's Health Project of DC
- 2) Planned Parenthood, Ophelia-Egypt Clinic
- 3) Hunt Place
- 4) East of the River
- 5) Woodson Adolescent Wellness Center

Key indicators for Zip Code 20020

Population: 50,024

% below FPL: 32

% below 200% FPL: 50

Avoidable hospitalizations:

High for all ages

Chronic disease burden:

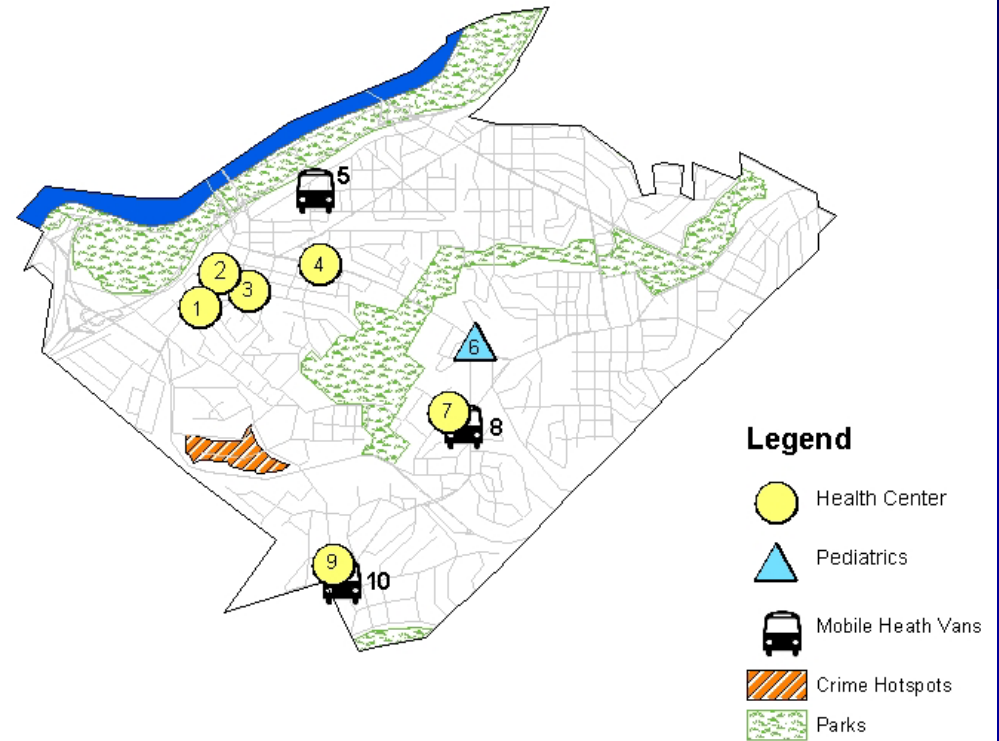
High

Uninsurance: High

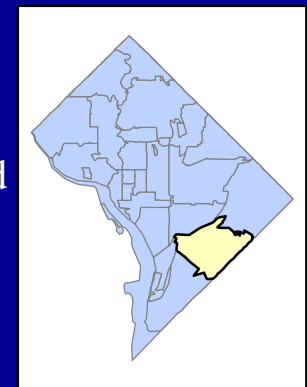
No regular source of care:

Medium

20020



- 1) Whitman-Walker, Max Robinson Center
- 2) Family and Medical Counseling Services
- 3) Anacostia Health Center
- 4) Good Hope Rd. Clinic
- 5) Georgetown Community Pediatrics
- 6) Children's Health Center at Good Hope Road
- 7) Woodland Terrace
- 8) Children's Health Project of DC
- 9) Stanton Road
- 10) Children's Health Project of DC



Key indicators for Zip Code 20032

Population: 31,676

% below FPL: 35

% below 200% FPL: 58

Avoidable hospitalizations:

High for all ages

Chronic disease burden:

Medium

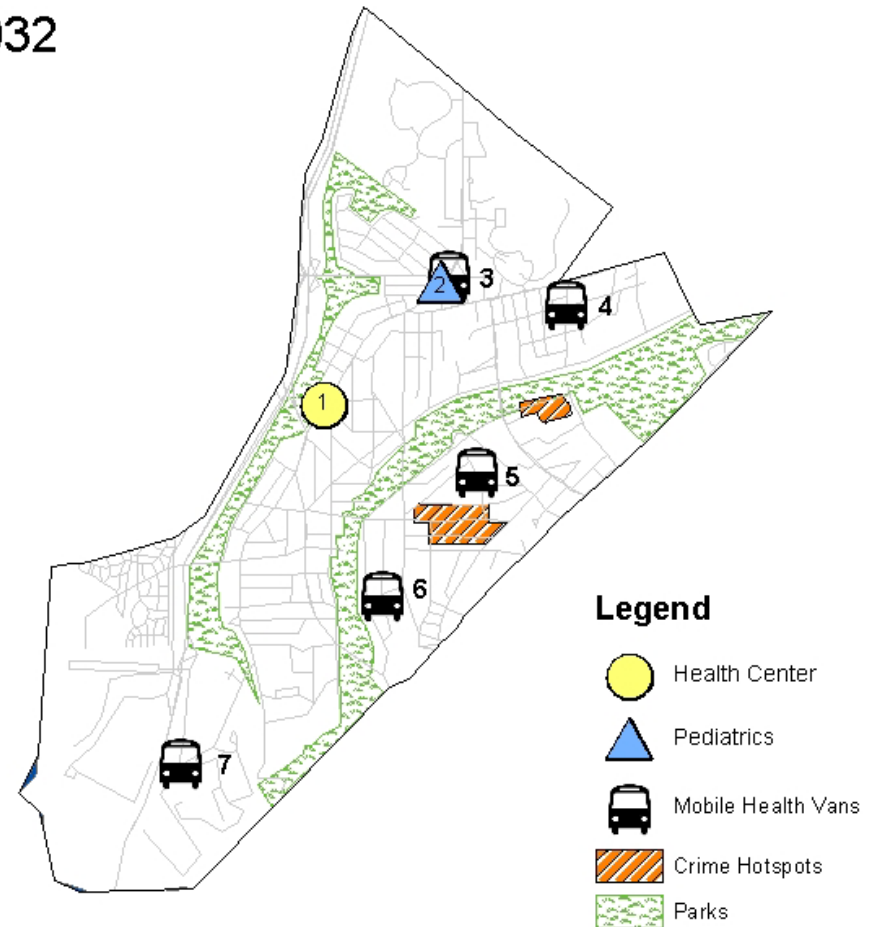
Uninsurance: Medium

No regular source of care:

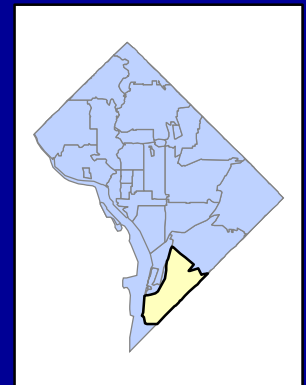
High

DC Primary Care Association

20032



- 1) Congress Heights
- 2) Children's Health Center at MLK Ave SE
- 3) Project Orion
- 4) Children's Health Project of DC
- 5) Children's Health Project of DC
- 6) Children's Health Project of DC
- 7) Georgetown Community Pediatrics



Key indicators for Zip Code 20002

Population: 49,391

% below FPL: 22

% below 200% FPL: 39

Avoidable hospitalizations:

High for adults. Medium for kids and seniors

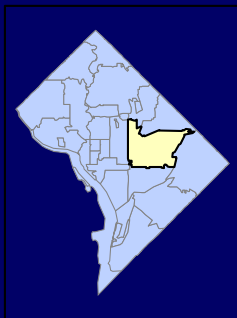
Chronic disease burden:

Medium

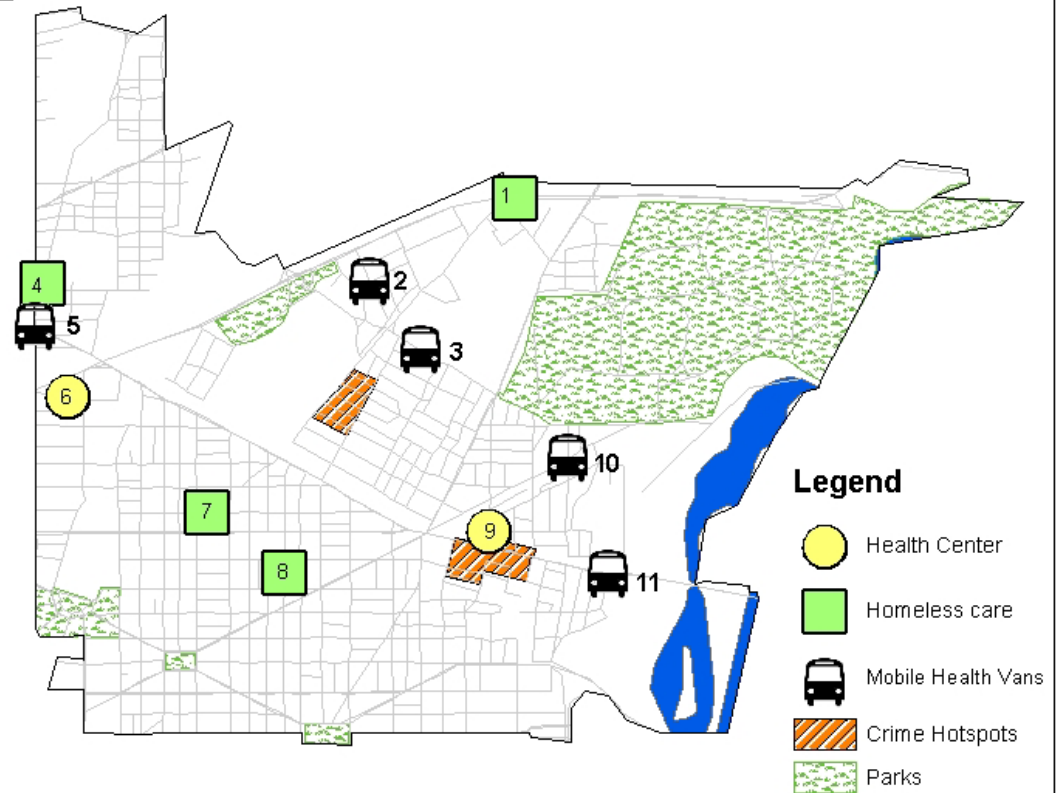
Uninsurance: High

No regular source of care:

High



20002



- 1) Harbor Lights
- 2) Health Care for the Homeless
- 3) Project Orion
- 4) Emery Shelter
- 5) Project Orion
- 6) First Street
- 7) Blair Shelter
- 8) House of Ruth
- 9) DC Developing Families Center
- 10) Mary's Center
- 11) Georgetown Community Pediatrics

DC Primary Care Association

Key indicators for Zip Code 20001

Population: 33,711

% below FPL: 30

% below 200% FPL: 53

Avoidable hospitalizations:

Medium for kids. High for everyone else.

Chronic disease burden:

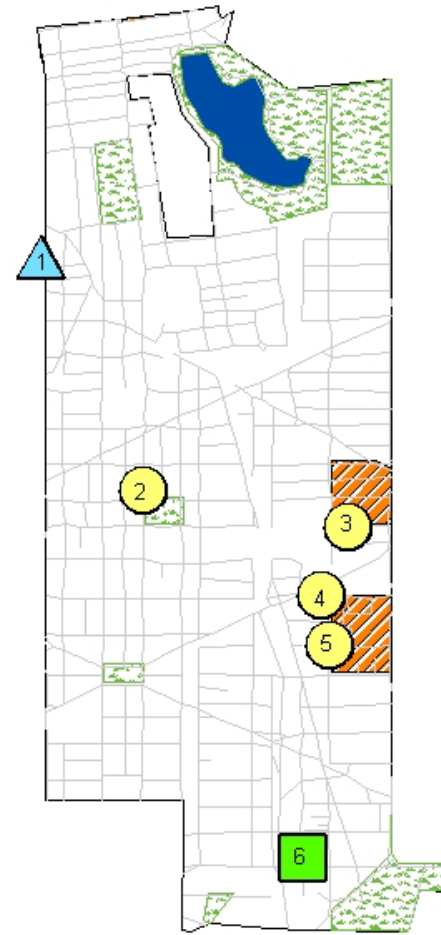
Medium

Uninsurance: Medium

No regular source of care:

High

20001

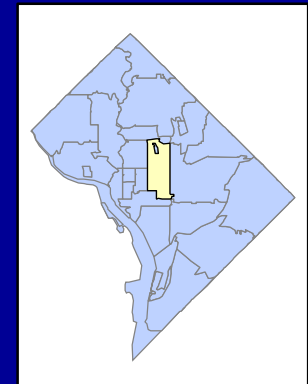


Legend

- Health Center
- Homeless care
- Pediatrics
- Crime Hotspots
- Parks

- 1) Children's Health Center at Shaw
- 2) Bread for the City
- 3) SOME (So Others Might Eat)
- 4) Perry Family Health Center,
- 5) Walker-Jones
- 6) Federal City-CCNV

DC Primary Care Association



Key indicators for Zip Code 20010

Population: 29,013

% below FPL: 22

% below 200% FPL: 43

Avoidable hospitalizations:

High for kids. Medium for everyone else.

Chronic disease burden:

Low

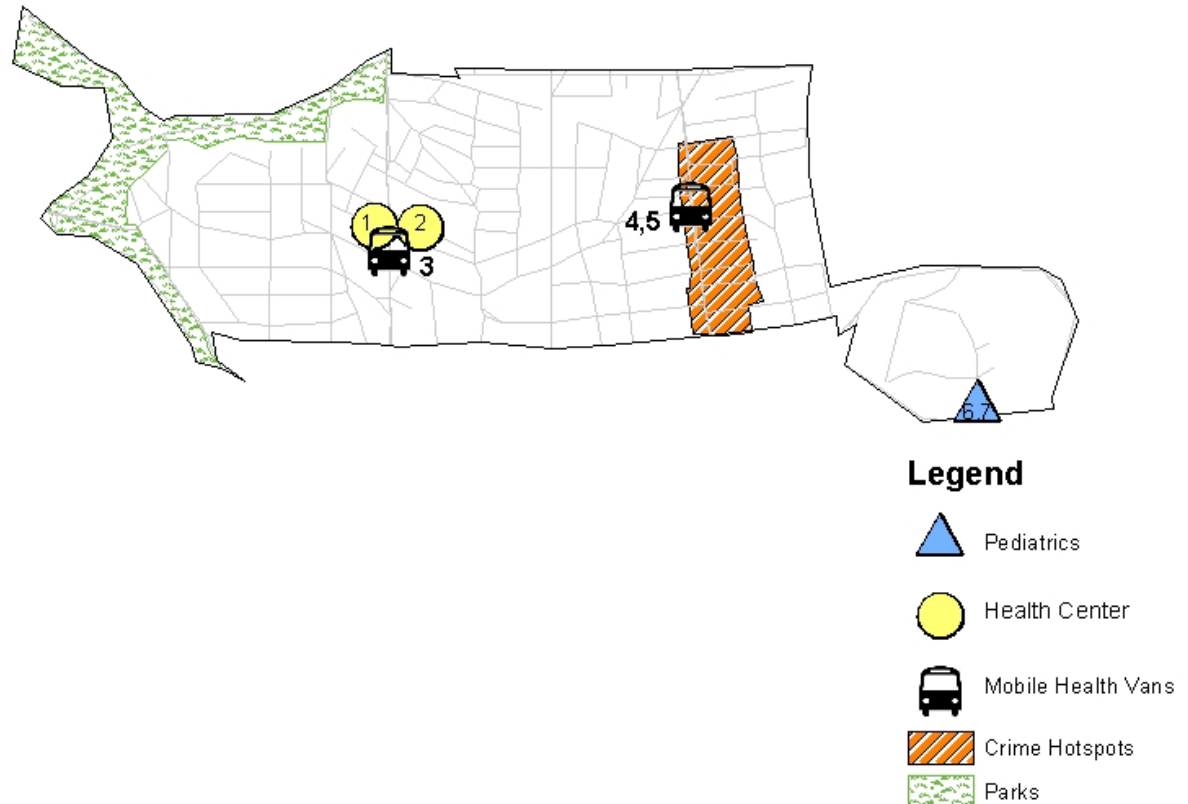
Uninsurance: High

No regular source of care:

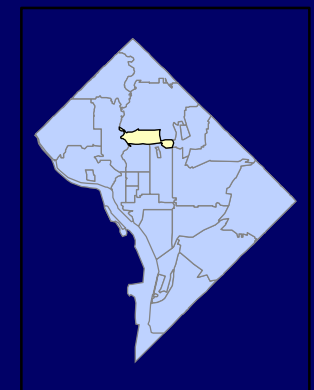
Medium

DC Primary Care Association

20010



- 1) Spanish Catholic Center
- 2) Washington Free Clinic
- 3) Mary's Center
- 4) Mary's Center
- 5) Project Orion
- 6) Children's Adolescent Health Center
- 7) Children's Health Center



Key indicators for Zip Code 20009

Population: 46,418

% below FPL: 18

% below 200% FPL: 35

Avoidable hospitalizations:

Low for kids and seniors.

Medium for adults.

Chronic disease burden:

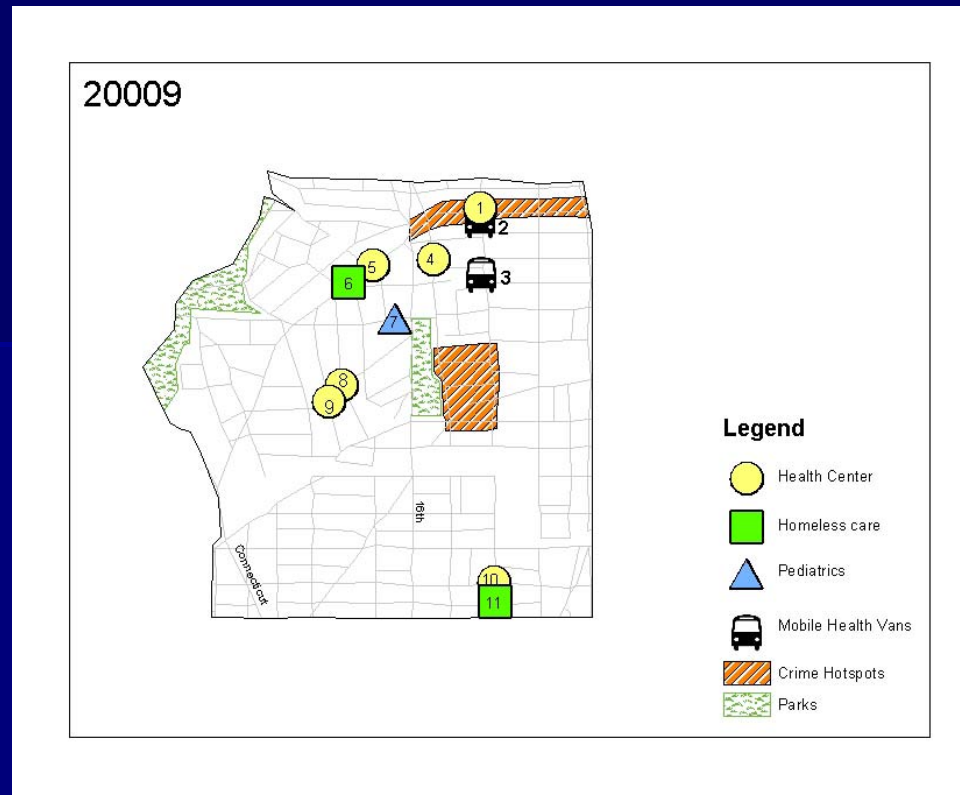
Low

Uninsurance: High

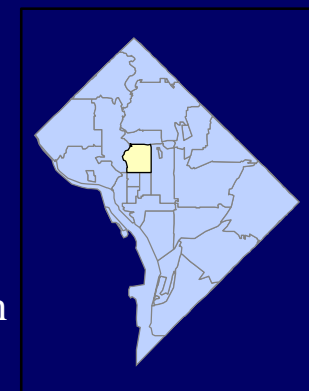
No regular source of care:

Medium

DC Primary Care Association



- 1) Upper Cardozo Health Center
- 2) Mary's Center
- 3) Project Orion
- 4) La Clinica del Pueblo
- 5) Columbia Road Health Services
- 6) Christ House
- 7) Children's Health Center at Adams Morgan
- 8) Mary's Center
- 9) Community of Hope
- 10) Whitman-Walker, Elizabeth Taylor Medical Center
- 11) Central Union Mission



Key indicators for Zip Code 20003

Population: 23,122

% below FPL: 21

% below 200% FPL: 30

Avoidable hospitalizations:

Medium for all ages

Chronic disease burden:

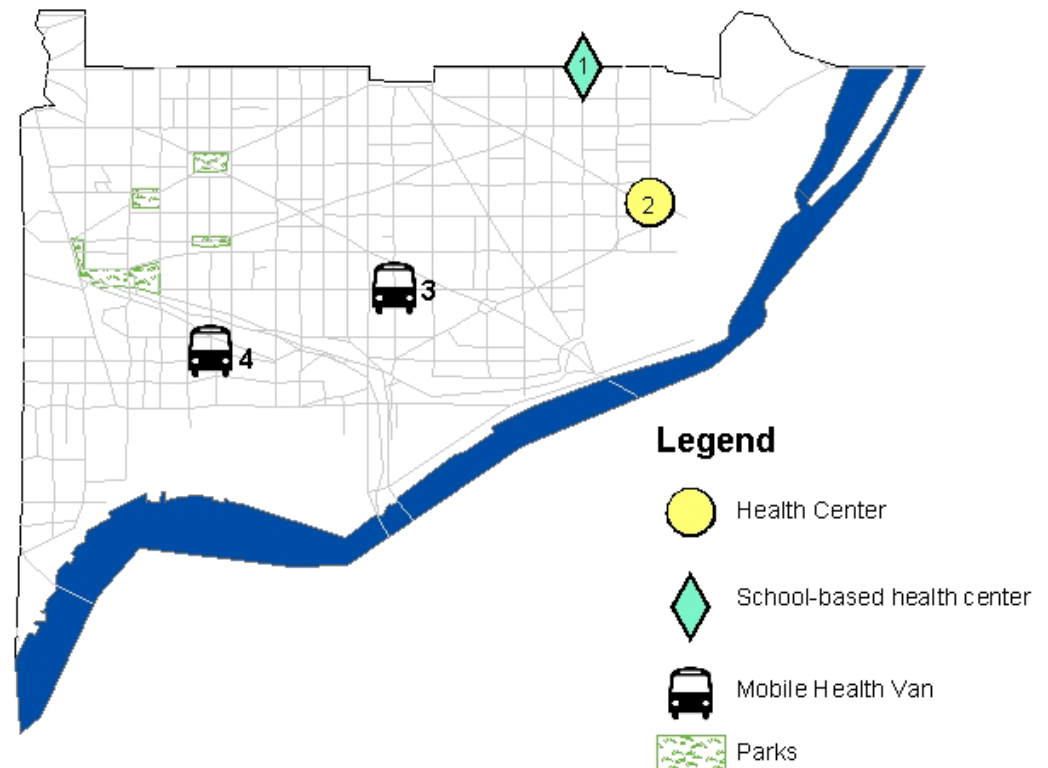
Medium

Uninsurance: Medium

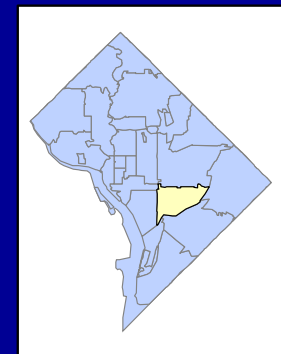
No regular source of care:

Medium

20003



- 1) Eastern Student Health Center
- 2) Phoenix Center
- 3) Georgetown Community Pediatrics
- 4) Georgetown Community Pediatrics



DC Primary Care Association

Key indicators for Zip Code 20024

Population: 11,709
% below FPL: 22
% below 200% FPL: 37

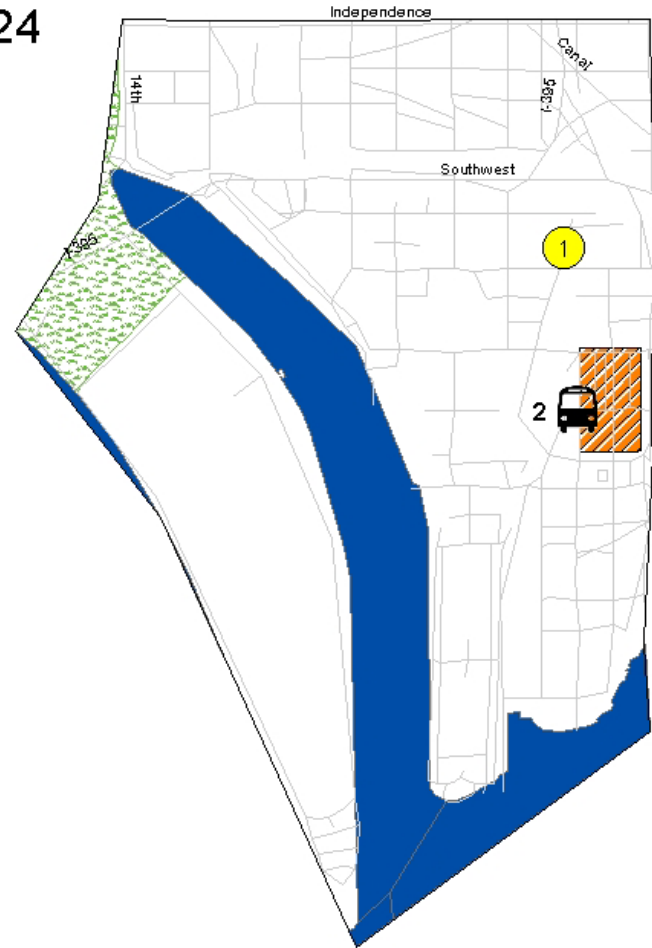
Avoidable hospitalizations:
High for kids. Medium for
everyone else.

Chronic disease burden:
Medium

Uninsurance: Low

No regular source of care:
Low

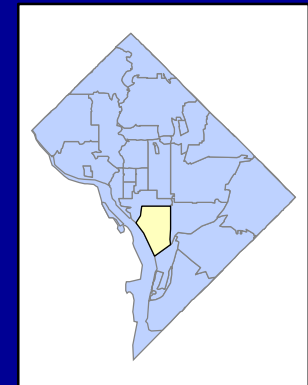
20024



Legend

-  Health Center
-  Mobile Health Van
-  Parks
-  Crime hotspots

- 1) Southwest Health Center
- 2) Health Care for the Homeless



DC Primary Care Association



Medical Homes DC
DC Primary Care Association