



The Brookings Institution

Center on Urban and Metropolitan Policy

The New U.S. Demographics

Audrey Singer

**Funders Network on Population,
Reproductive Health and Rights**

November 10, 2003

QUESTIONS

How has the demography of race and ethnicity in the United States changed over time?

What are the implications of some of these trends?

How can we better serve immigrant and ethnic communities through public policies and programs?

America's Changing Composition

CONTINUING HISTORY OF IMMIGRATION

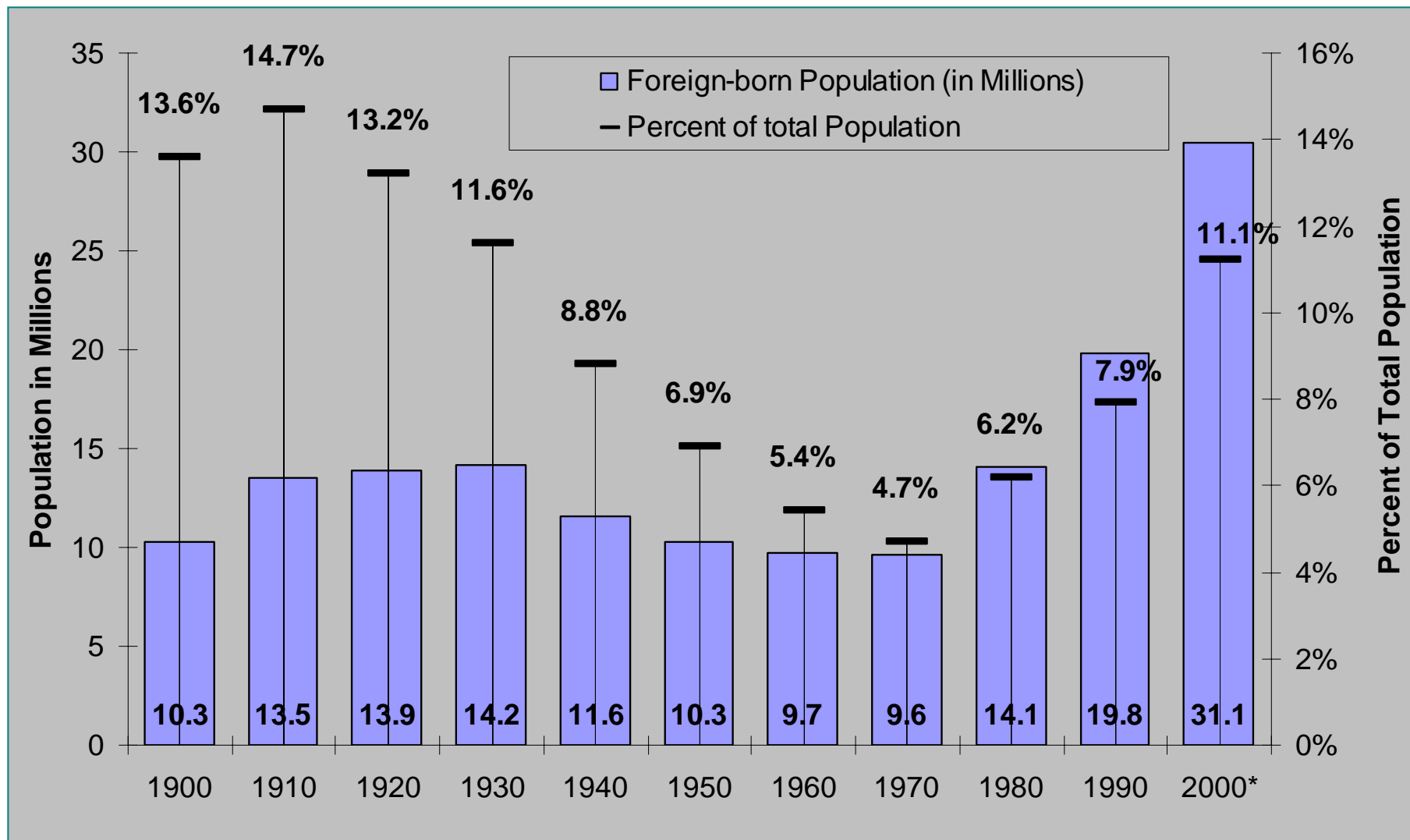
PERSISTENT DIFFERENCES IN FERTILITY RATES

FAMILY FORMATION AND INTERMARRIAGE

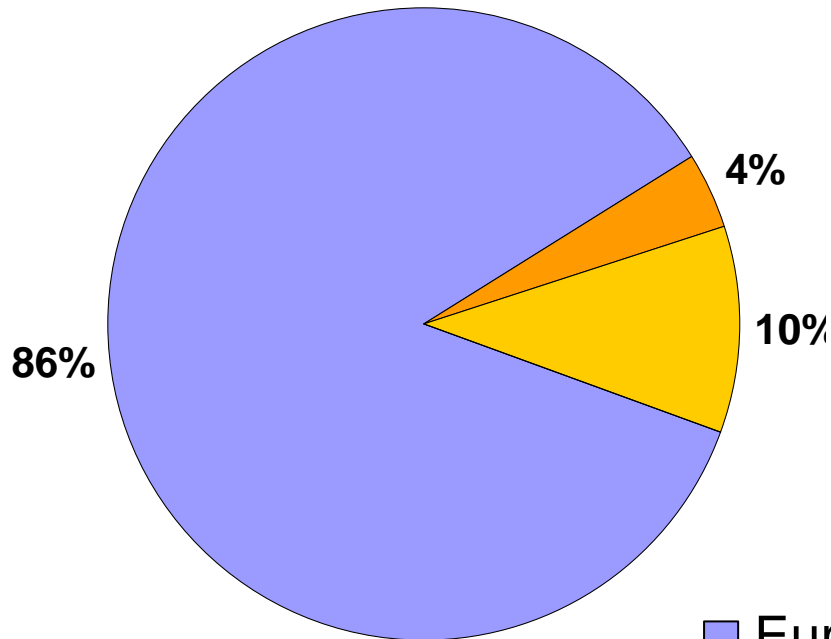
DATA COLLECTION

CONTINUING HISTORY OF IMMIGRATION

The share of the U.S. population that is foreign-born is lower at the end of the 20th century than at the start

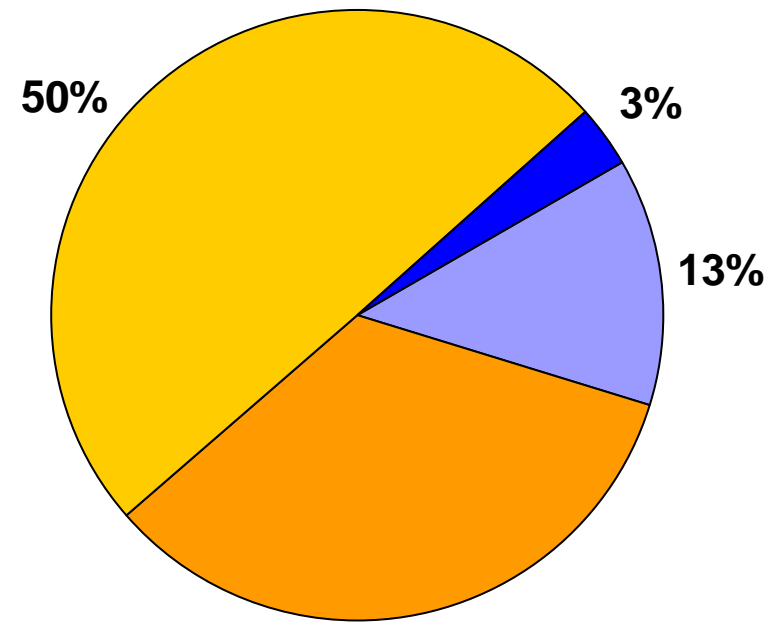


Steep declines in European source countries during the century



1900-1920

- Europe
- Asia
- Latin America
- Africa



1980-2000

DIFFERENCES IN FERTILITY RATES

Total fertility rate among Latinas is higher than other groups

[TFR: The average number of children that a woman gives birth to in her lifetime]

	Total Fertility Rate
Hispanic	3.2
Black and American Indian	2.1
Replacement Level	2.1
Asian	2.0
White	1.9

INTERRACIAL MARRIAGE

Interracial Marriage

- **One in 15 marriages is interracial in 2000, a 65 percent increase from 1990.**
- **Nearly 3 of every 10 marriages involving Latinos or Asians is a mixed-race marriage.**
- **Nearly half of all U.S. interracial marriages include a Latino.**

DATA COLLECTION

Defining Race and Ethnicity

7. Is Person 1 Spanish/Hispanic/Latino? Mark the "No" box if not Spanish/Hispanic/Latino.

- No, not Spanish/Hispanic/Latino
- Yes, Puerto Rican
- Yes, Mexican, Mexican Am., Chicano
- Yes, Cuban
- Yes, other Spanish/Hispanic/Latino — *Print group.* **⌘**

Response grid for question 7 with an arrow pointing to the 10th box from the right.

**"Yes" answer here =
"Hispanic"
(regardless of race)**

8. What is Person 1's race? Mark one or more races to indicate what this person considers himself/herself to be.

- White
- Black, African Am., or Negro
- American Indian or Alaska Native — *Print name of enrolled or principal tribe.* **⌘**

Response grid for question 8 (top section).

- Asian Indian
- Japanese
- Native Hawaiian
- Chinese
- Korean
- Guamanian or Chamorro
- Filipino
- Vietnamese
- Samoan
- Other Asian — *Print race.* **⌘**
- Other Pacific Islander — *Print race.* **⌘**

Response grid for question 8 (middle section).

- Some other race — *Print race.* **⌘**

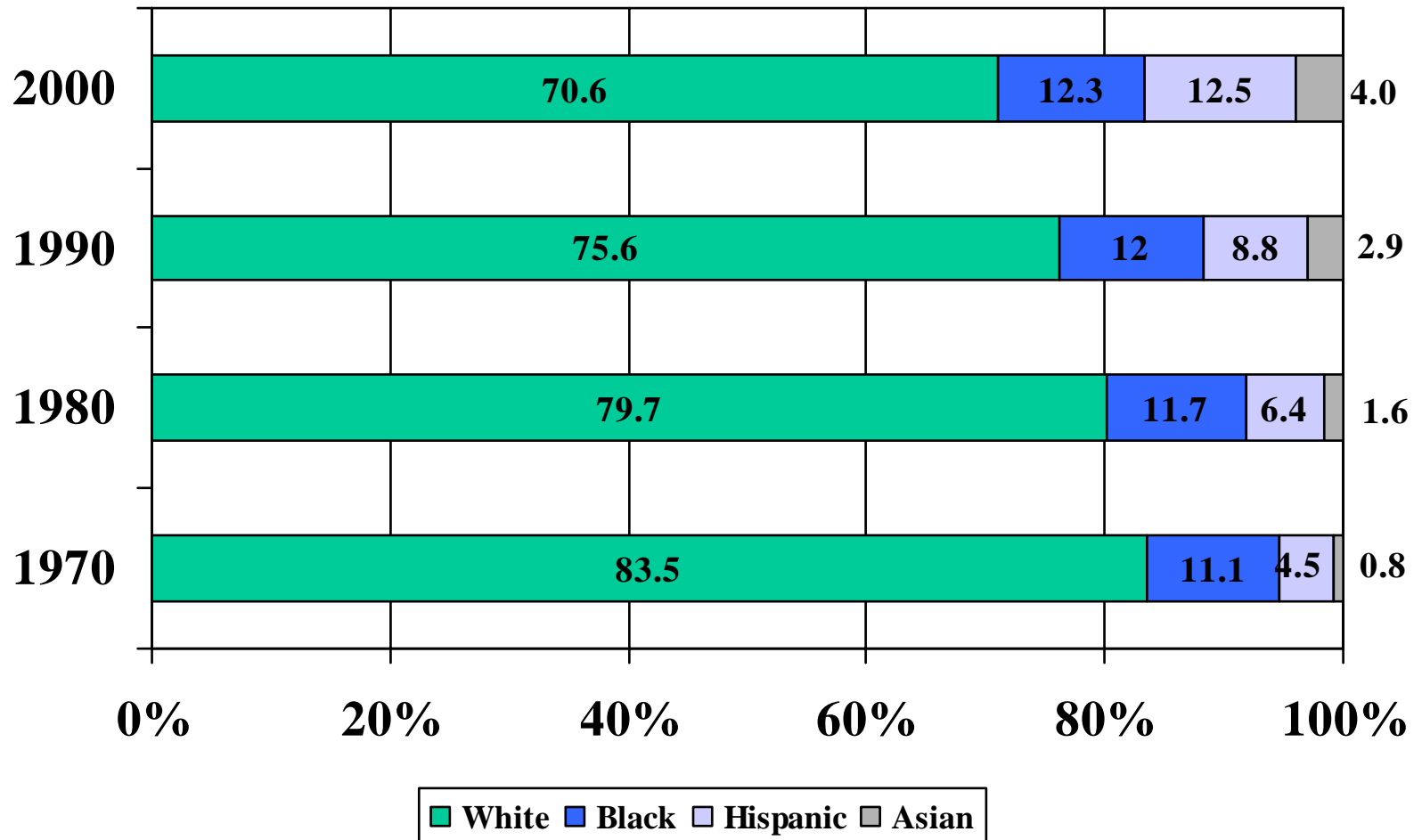
Response grid for question 8 (bottom section).

**Individuals can check
more than one race**

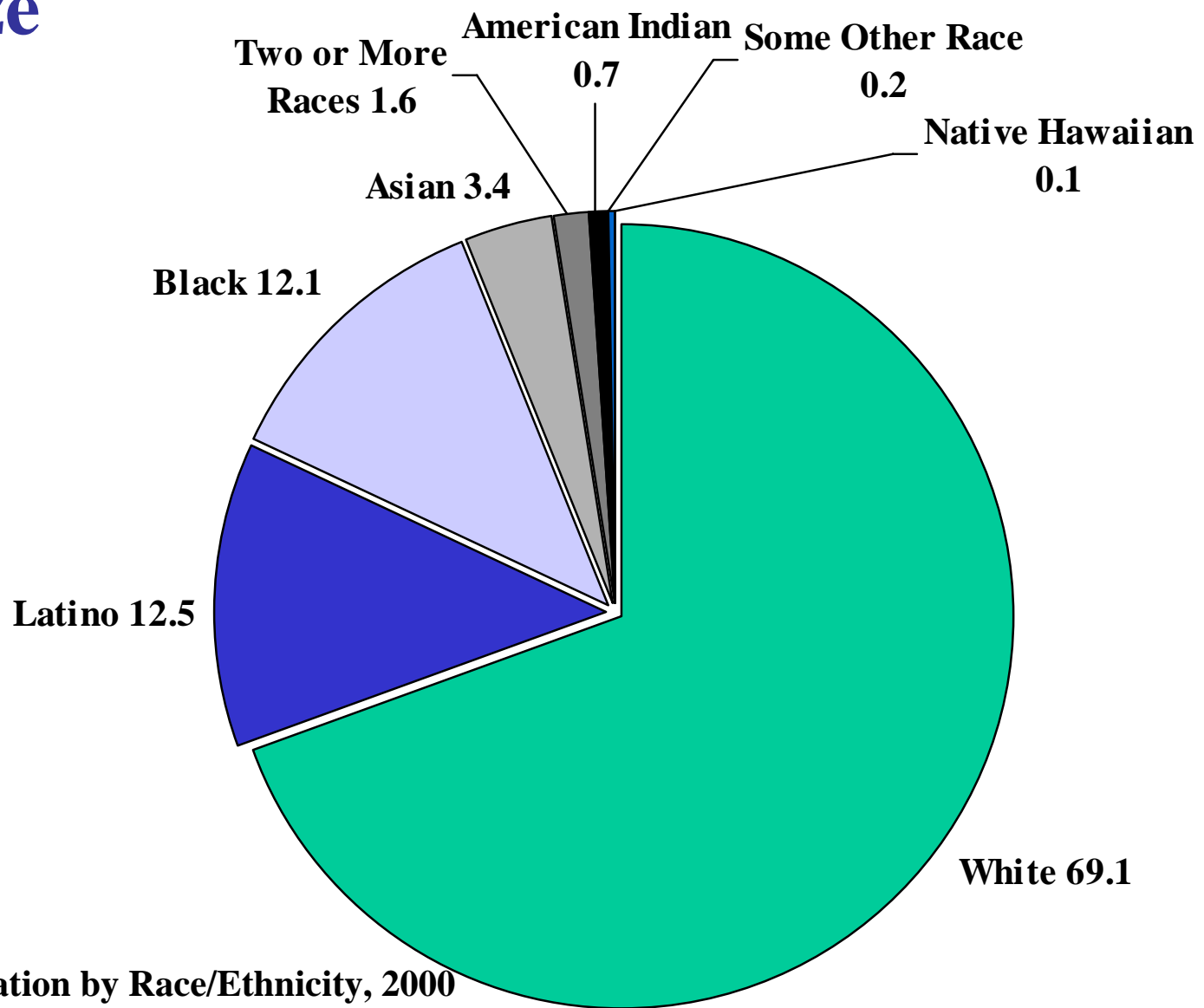
**What are the implications of
some of these trends?**

U.S. race and ethnic population will continue to change

U.S. Population by Race/Ethnicity 1970-2000



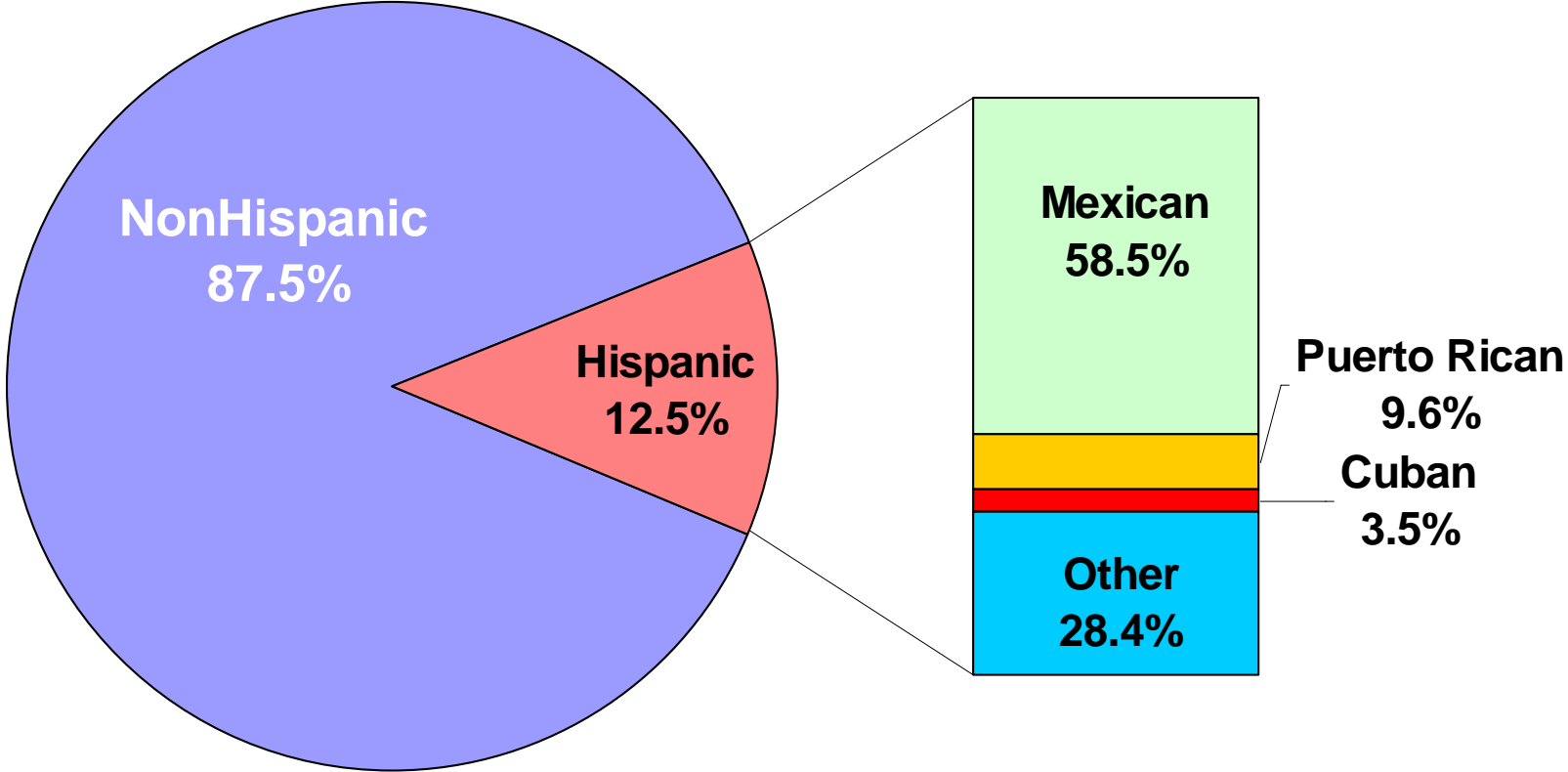
Black and Latino populations are nearly equal in size



U.S Population by Race/Ethnicity, 2000

Source: Census 2000 SF1

Mexico is the largest national origin group



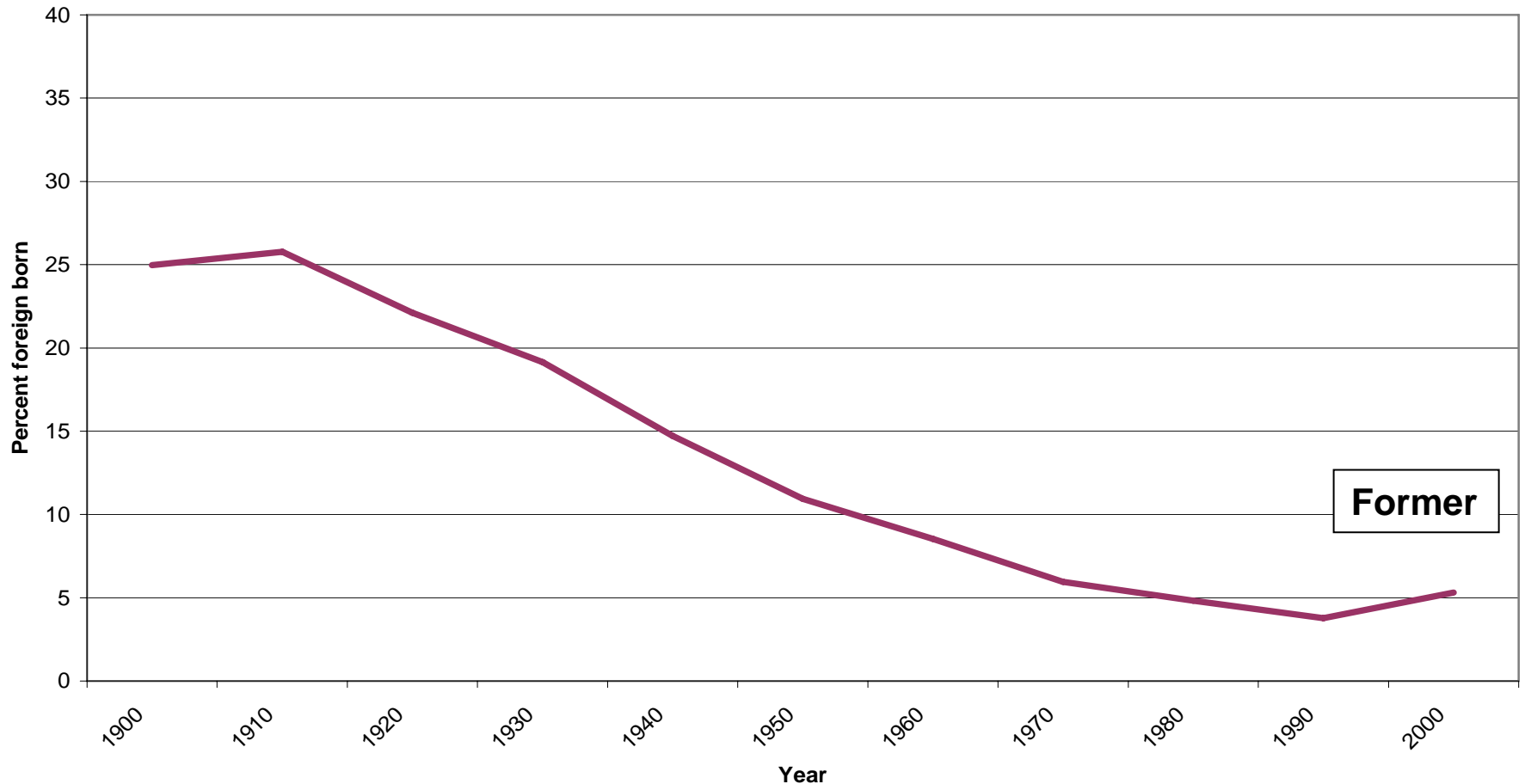
U.S. Hispanic Population, 2000

Source: Census 2000 SF1

New Locations of Immigrants in the United States

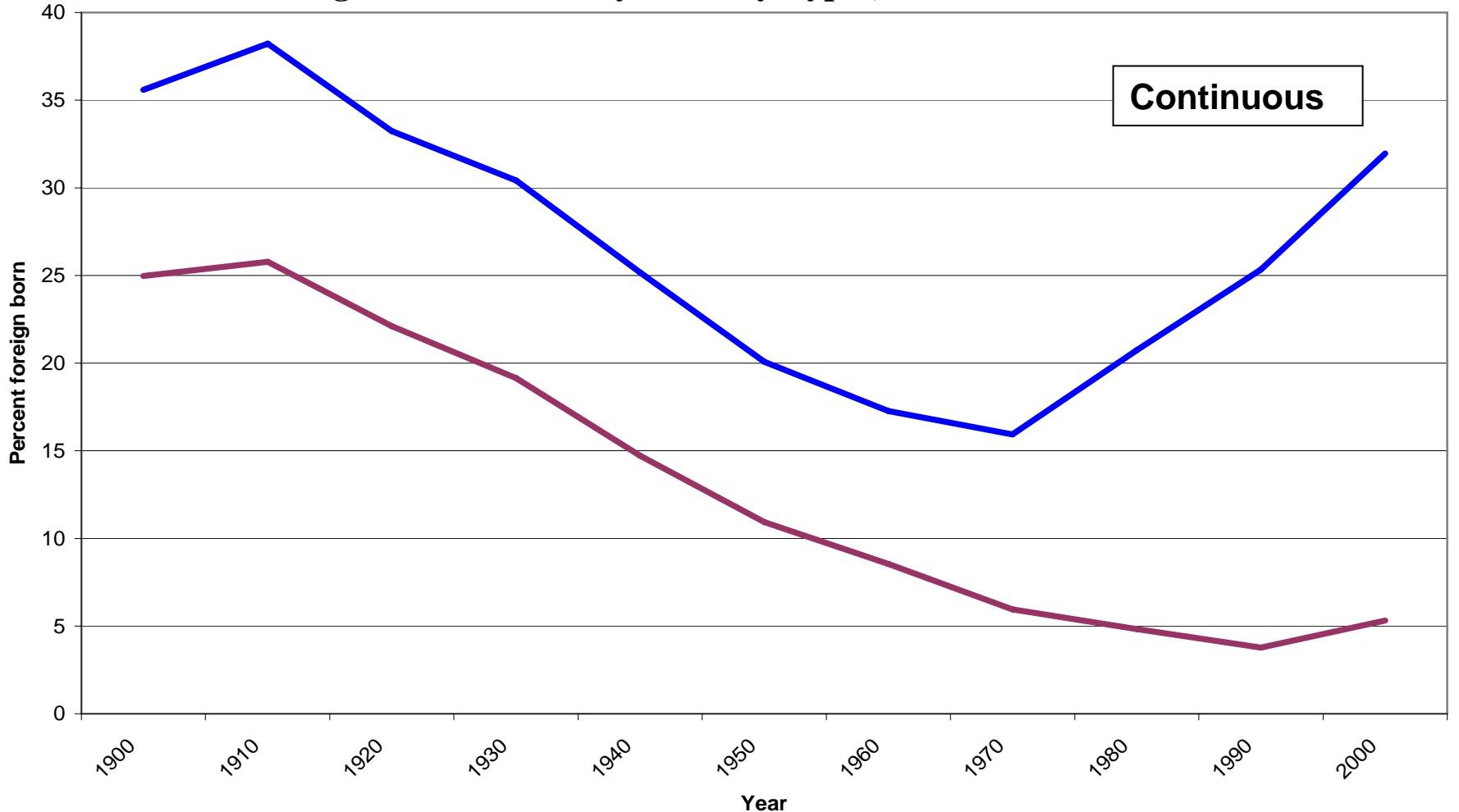
Former gateways are no longer major destinations

Percent of Foreign Born in Cities by Gateway Types, 1900-2000



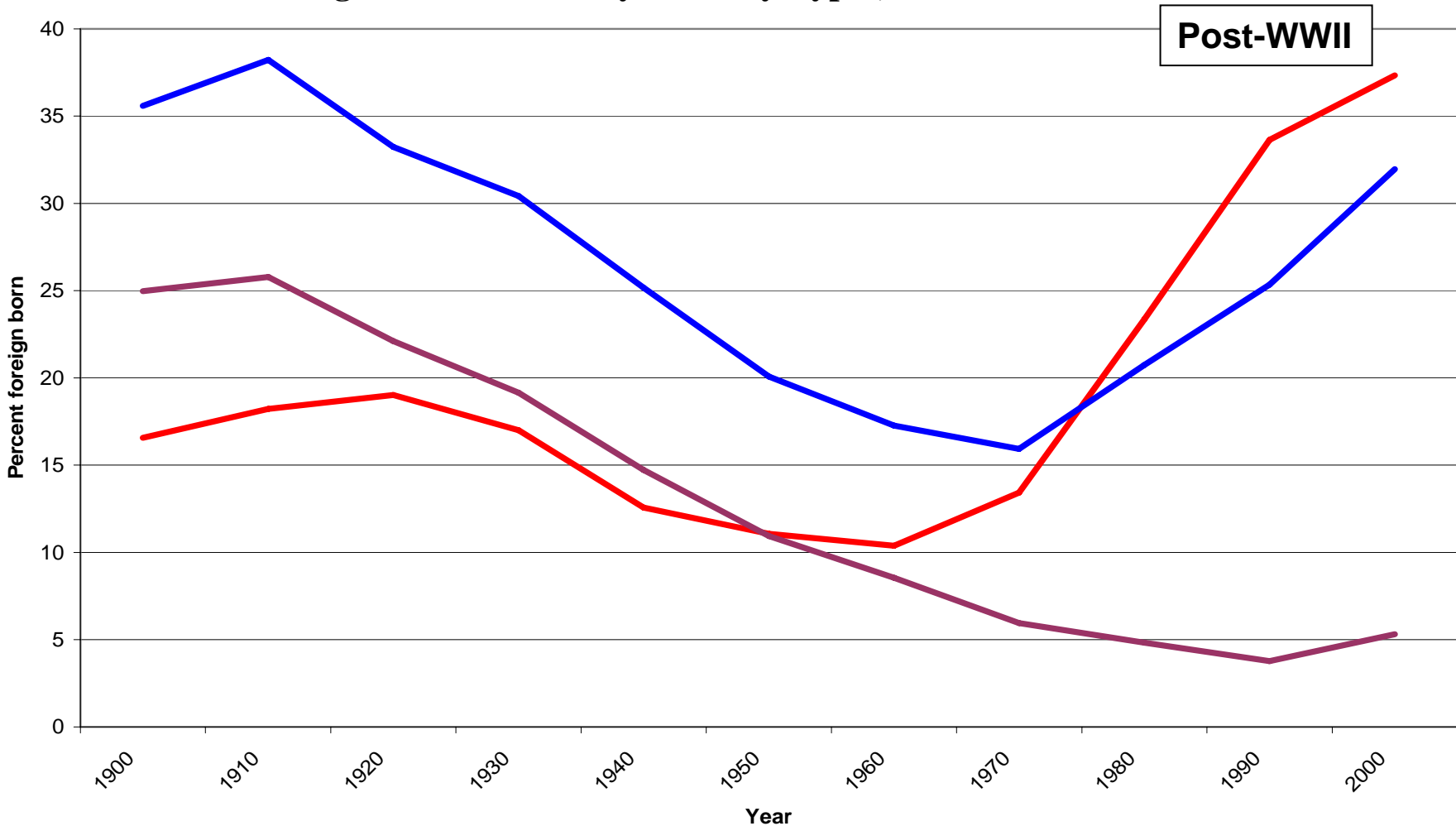
Continuous gateways have always attracted more than their fair share of immigrants

Percent of Foreign Born in Cities by Gateway Types, 1900-2000



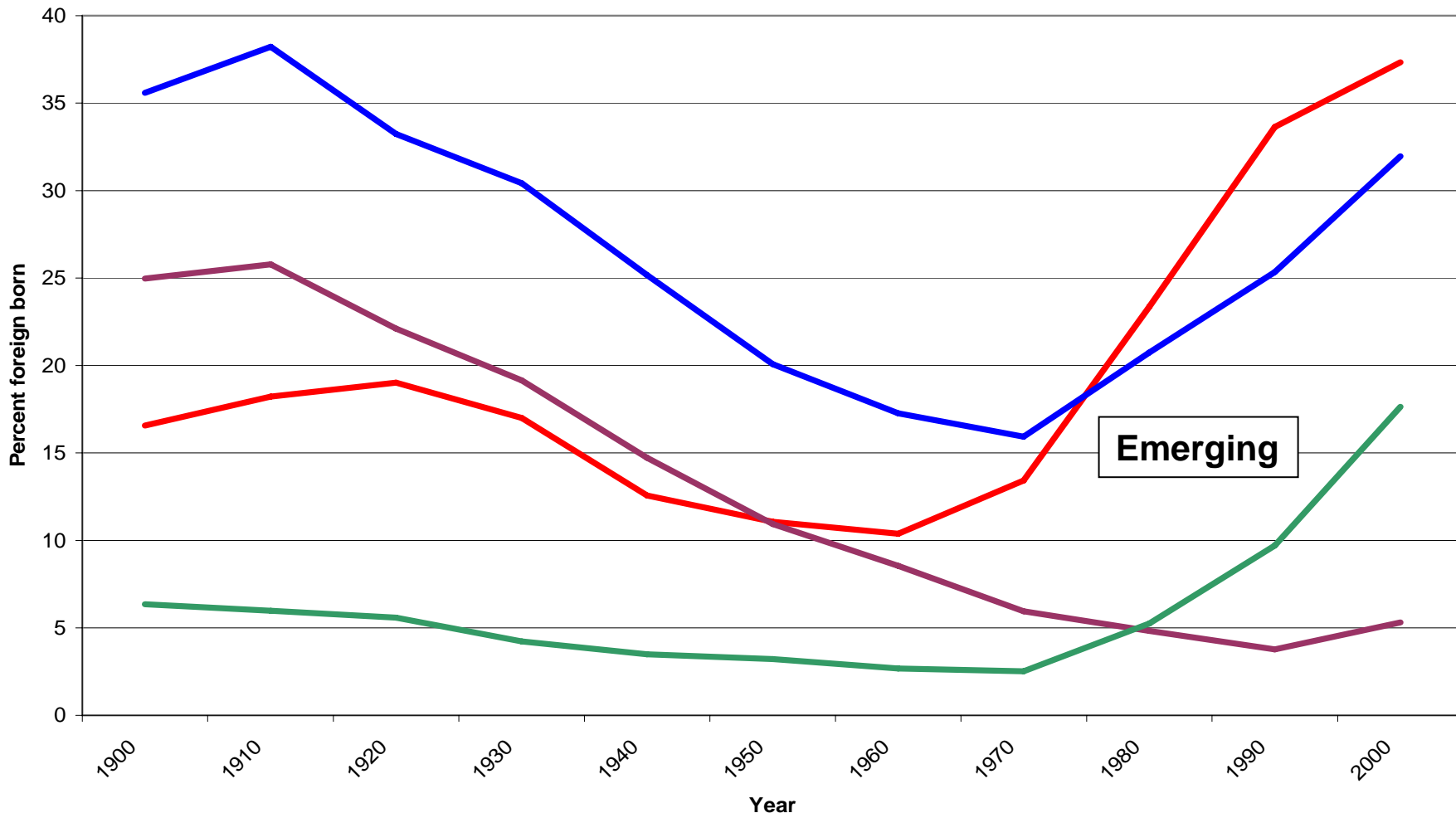
Post-WWII gateways became destinations during the past 50 years

Percent of Foreign Born in Cities by Gateway Types, 1900-2000



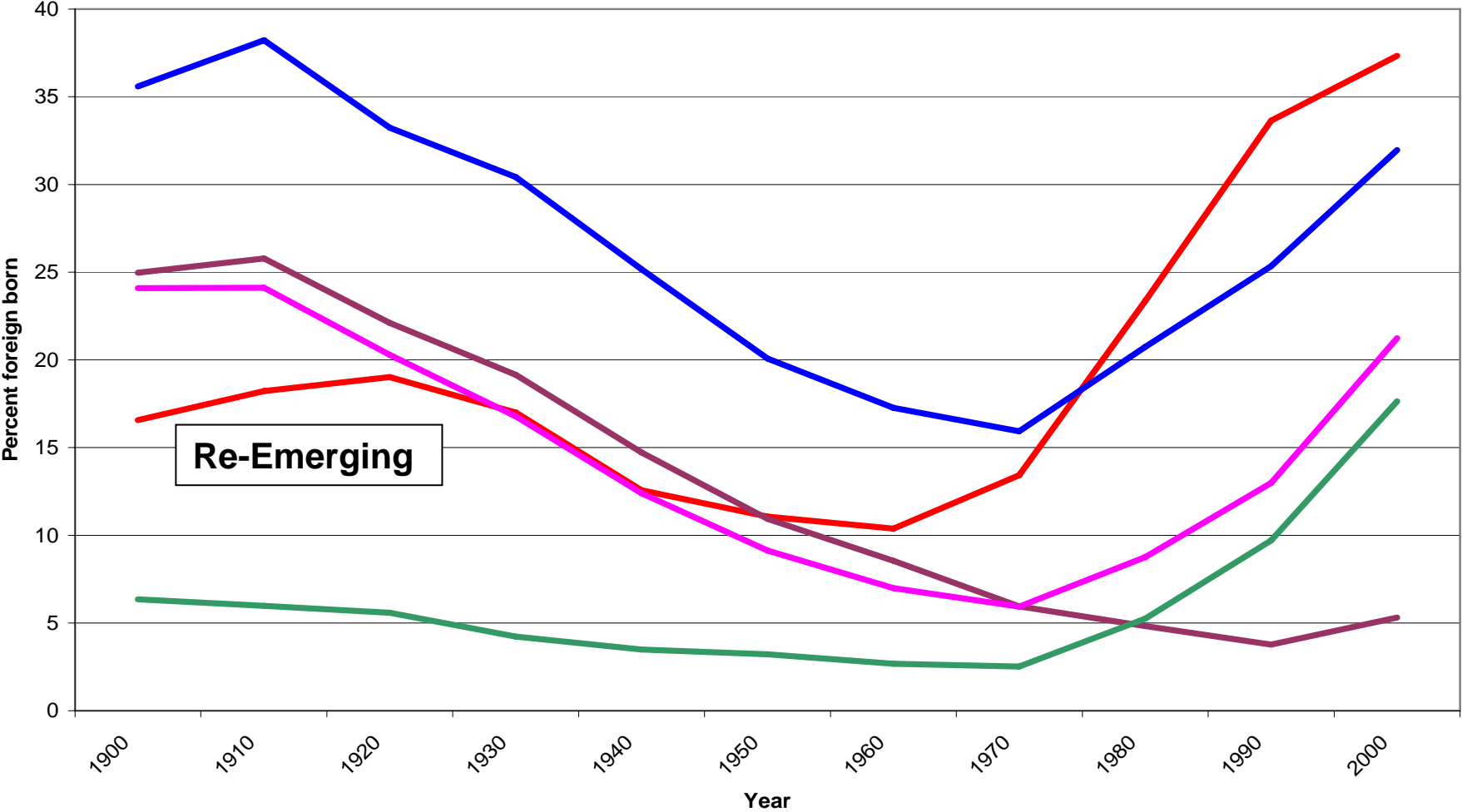
Emerging gateways experienced very recent and rapid growth in their foreign-born population

Percent of Foreign Born in Cities by Gateway Types, 1900-2000



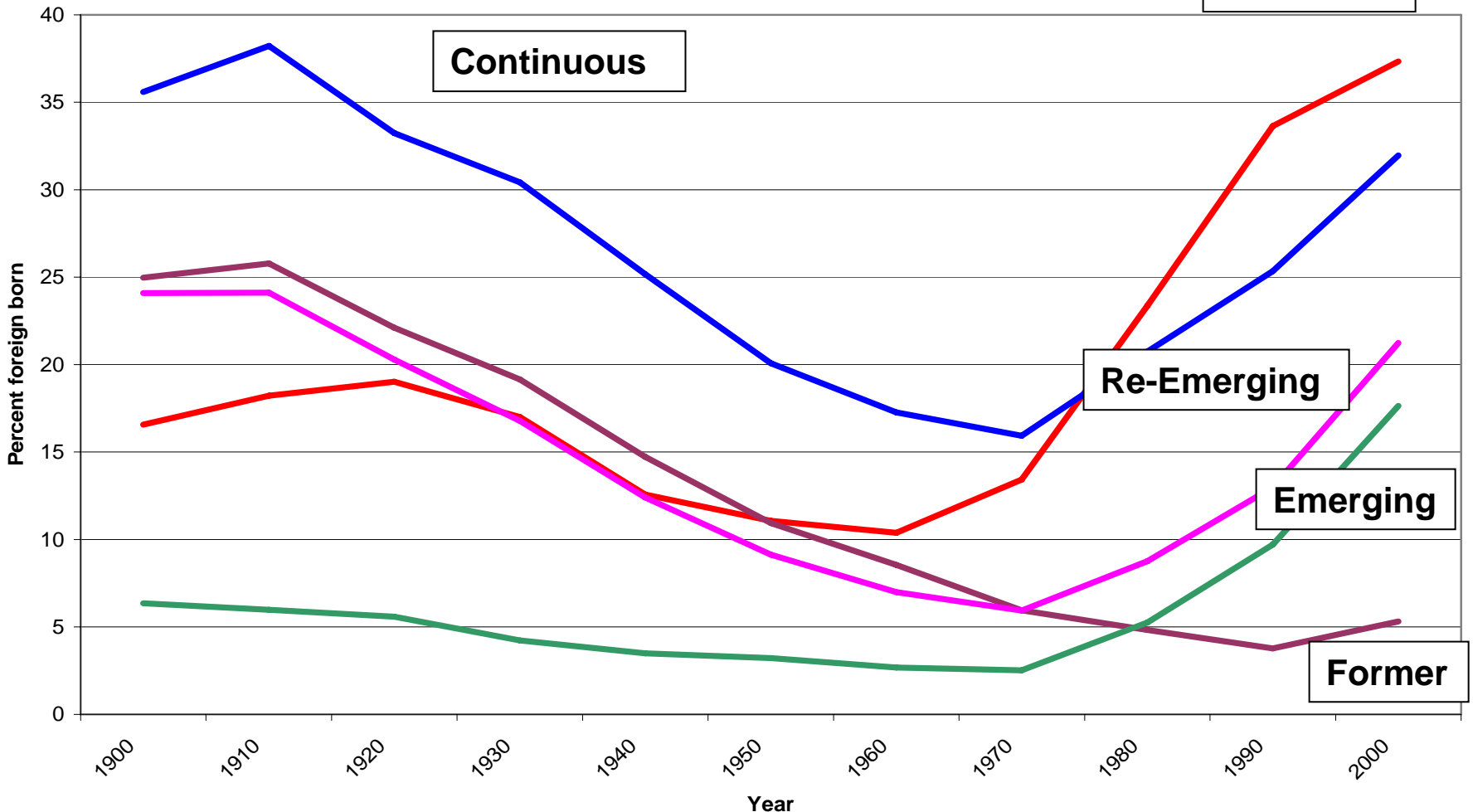
Re-Emerging gateways are once again major destinations for immigrants

Percent of Foreign Born in Cities by Gateway Types, 1900-2000



Emerging gateways represent a new context for immigrant integration

Percent of Foreign Born in Cities by Gateway Types, 1900-2000



Immigration “Gateways” are shifting

“Established Gateways”

Chicago	61 %
Los Angeles	19 %
Miami	31 %
New York	37 %
San Diego	41 %
San Francisco	26 %

“Emerging Gateways”

Atlanta	262 %
Charlotte	315 %
Fort Worth-Arlington	131 %
Las Vegas	248 %
Orlando	140 %
Salt Lake City	174 %

Growth in Metro Foreign-Born Population, 1990-2000

Ten Metro Areas with Largest Latino Populations, 2000

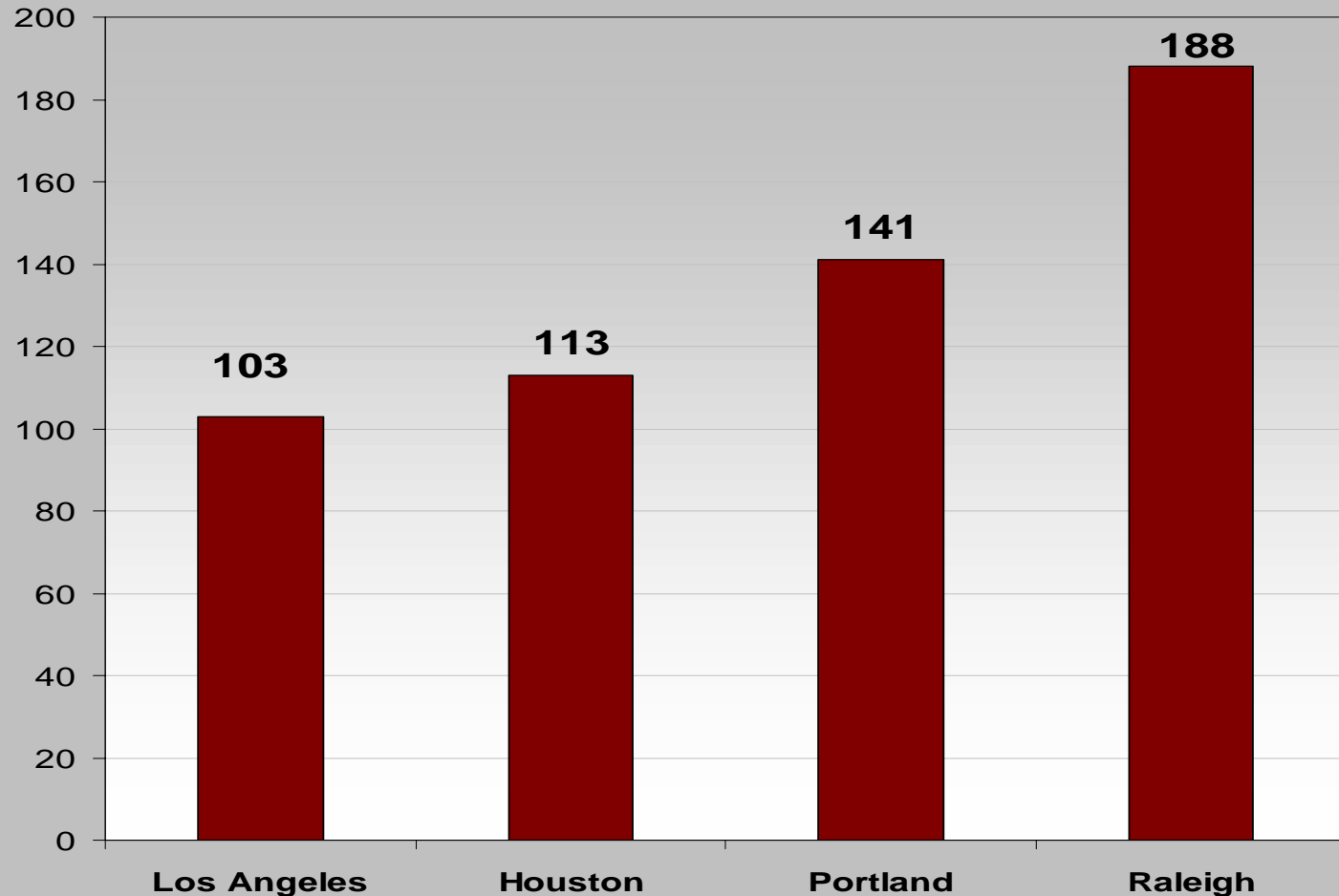
	Number of Latinos	Percent of Total Population	Growth from 1980-2000
Los Angeles	4,242,213	45%	105%
New York	2,339,836	25%	60%
Chicago	1,416,584	17%	143%
Miami	1,291,737	57%	123%
Houston	1,248,586	30%	211%
Riverside-San Bernardino	1,228,962	38%	324%
Orange County	875,579	31%	206%
Phoenix	817,012	25%	261%
San Antonio	816,037	51%	67%
Dallas	810,499	23%	324%
<i>TOTAL</i>	<i>15,087,045</i>	<i>31%</i>	<i>130%</i>

"Hypergrowth" New Latino Destinations, 2000

	Number of Latinos	Percent of Total Population	Growth from 1980-2000
Raleigh-Durham, NC	72,580	6%	1180%
Atlanta, GA	268,851	7%	995%
Greensboro, NC	62,210	5%	962%
Charlotte, NC	77,092	5%	932%
Orlando, FL	271,627	17%	859%
Las Vegas, NV	322,038	21%	753%
Nashville, TN	40,139	3%	630%
Fort Lauderdale, FL	271,652	17%	578%
Sarasota, FL	38,682	7%	538%
Portland, OR	142,444	7%	437%
Greenville, SC	26,167	3%	397%
West Palm Beach, FL	140,675	12%	397%
Washington, DC	432,003	9%	346%

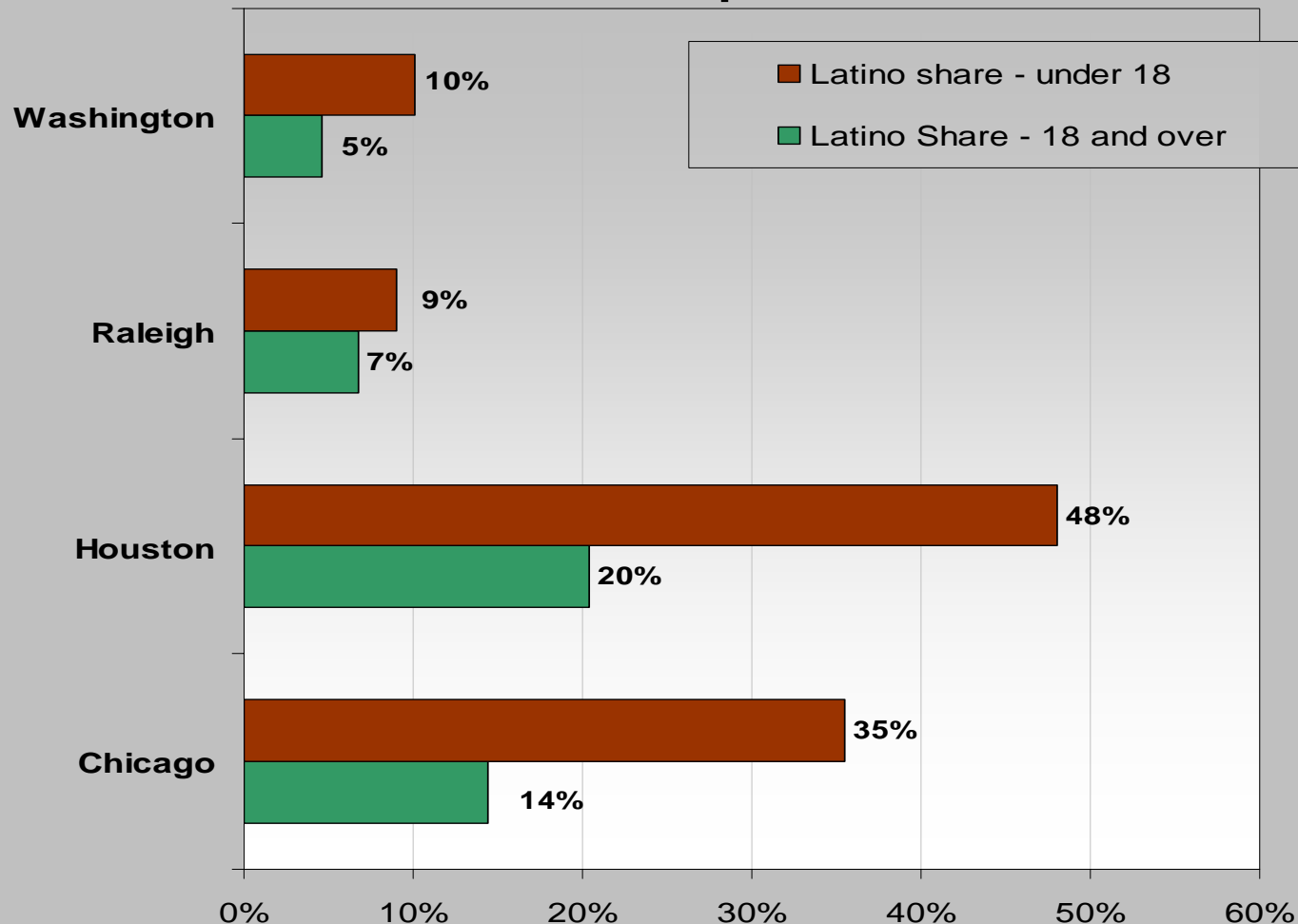
Latino population in “New Destinations” heavily male

18-64 year-old Latino males for every 100 Latino females, 2000



Schools in Emerging Gateways will eventually see children of immigrants

Latino Share of Child and Adult Population, Selected Cities, 2000



**How can we better serve
these communities through
public policies and
programs?**

WWW.BROOKINGS.EDU/URBAN