

Table 1. United States Net Saving and Investment by Sector, 1960-2005

Percent of national income						
Sector	1960-79	1980-89	1990-94	1995-99	2000-04	2005
Saving	11.0	7.0	4.1	6.2	3.2	1.0
Private	11.0	10.5	8.2	6.5	4.7	3.9
Household	7.0	7.5	5.5	3.1	1.7	-0.3
Government	0.0	-3.4	-4.2	-0.3	-1.6	-2.9
Domestic Investment	11.3	9.5	6.9	8.9	7.9	8.5
Private	9.2	7.9	5.5	7.8	6.5	7.1
Government	2.1	1.6	1.4	1.1	1.4	1.4
Net foreign Investment	0.5	-1.7	-1.0	-2.0	-5.1	-7.2
Statistical discrepancy	0.7	0.7	1.9	0.7	-0.3	0.4
Capital consumption	11.6	13.8	13.6	13.4	13.9	14.4

Source: Bureau of Economic Analysis, Department of Commerce, National Income and Product Accounts

Net saving excludes capital consumption allowances

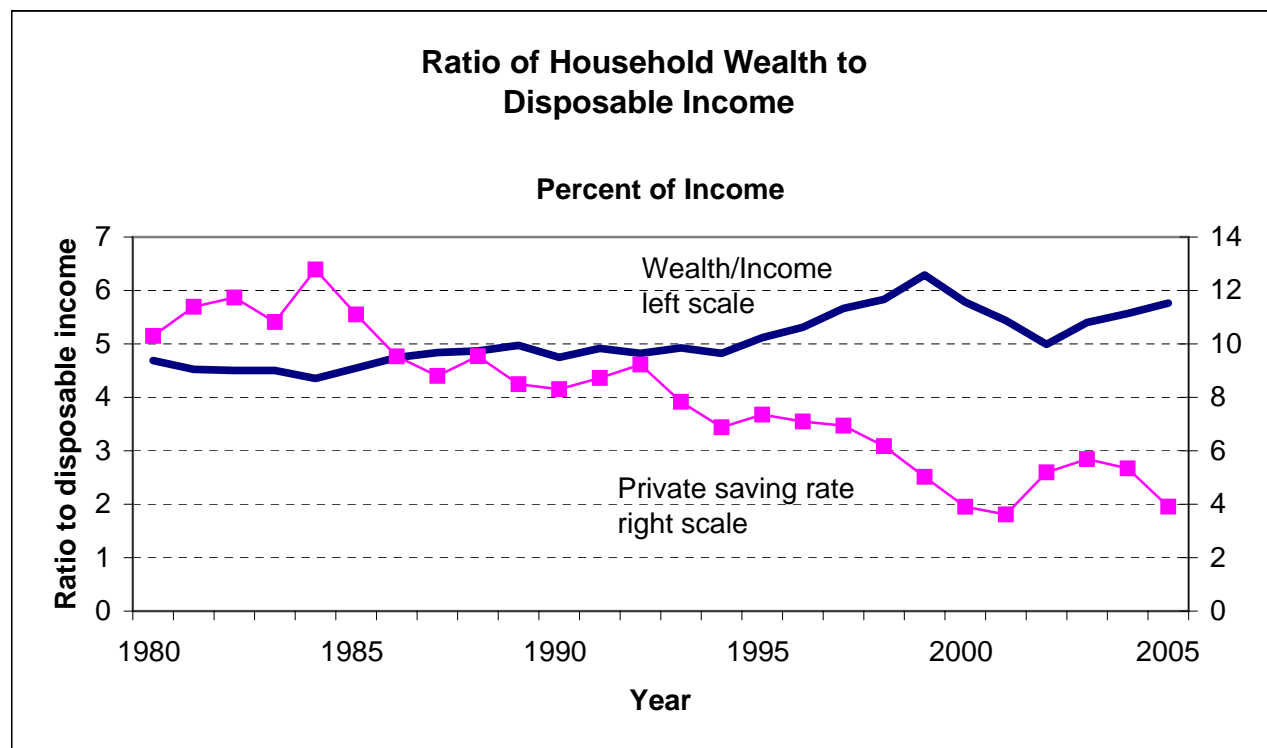


Figure 2. Gross national saving, selected regions, 1960-2005

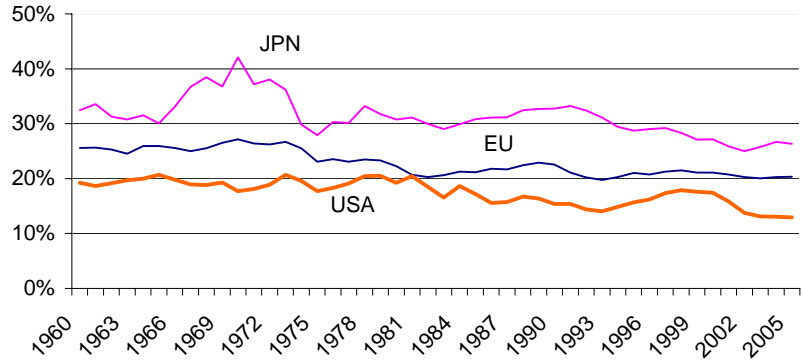


Figure 3. Gross capital formation, selected regions, 1960-2005

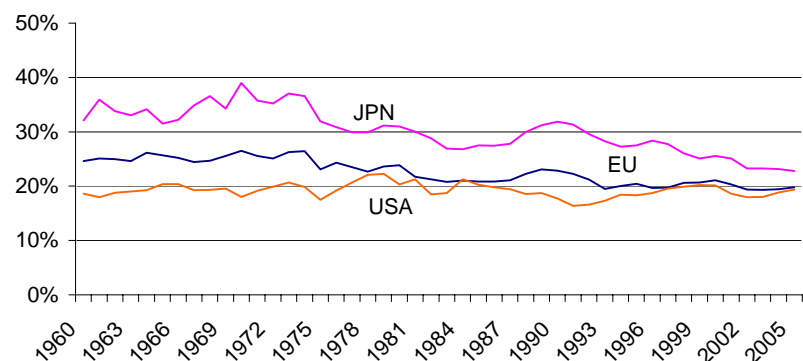


Figure 4. Gross saving, general government, selected regions, 1960-2005

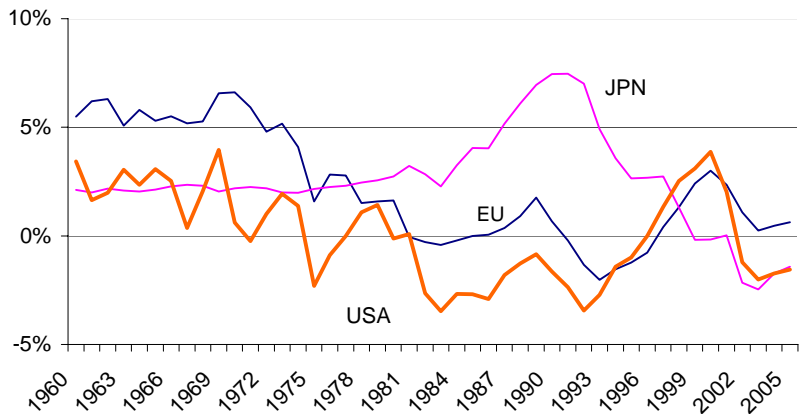


Figure 5. Gross private saving, selected regions, 1960-2005

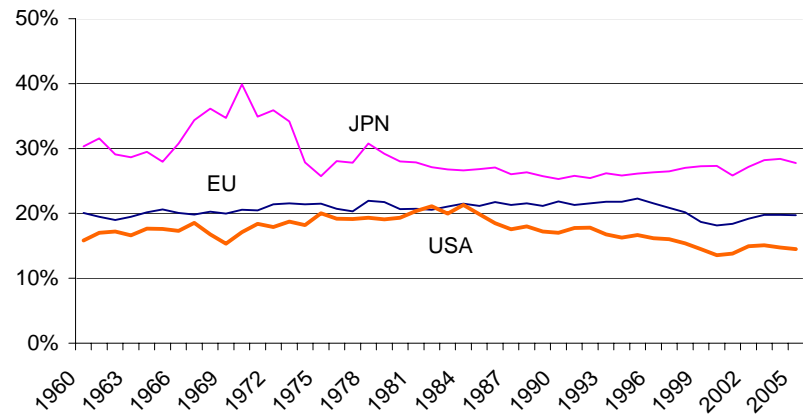


Table 2a. Current account as share of World GDP, selected regions and years

Percent					
Region	1980-89	1990-94	1995-99	2000-04	2005p
U.S.	-0.4	-0.2	-0.5	-1.4	-1.8
Japan	0.3	0.4	0.3	0.4	0.4
Europe ¹	0.0	0.0	0.3	0.2	0.2
Emerging Asia ²	0.1	0.1	0.2	0.4	0.4
Emerging Latin America ³	-0.1	-0.1	-0.2	0.0	0.1
Middle East ⁴	0.1	-0.1	0.0	0.2	0.5

Table 2b. Gross saving as share of Regional GNI, selected regions and years

Region	1980-89	1990-94	1995-99	2000-04	2005p
U.S.	17.5	14.8	16.9	14.6	12.9
Japan	30.9	31.8	28.5	26.1	26.3
Europe ¹	21.5	20.8	21.1	20.5	20.3
Emerging Asia ²	33.0	35.0	36.0	36.3	40.6
Emerging Latin America ³	20.5	18.4	18.7	19.2	17.8
Middle East ⁴	22.8	18.5	23.6	28.1	40.6

Table 2c. Gross capital formation as share of Regional GNI, selected regions and years

Region	1980-89	1990-94	1995-99	2000-04	2005p
U.S.	19.7	17.3	19.3	18.7	19.4
Japan	28.7	29.7	26.9	24.1	22.8
Europe ¹	21.7	21.2	20.2	19.9	19.8
Emerging Asia ²	31.3	33.7	33.6	32.2	35.7
Emerging Latin America ³	22.2	20.9	22.0	20.0	16.9
Middle East ⁴	23.1	25.0	23.0	21.6	21.2

Source: *OECD National Accounts Volume II, OECD Economic Outlook, IMF World Economic Outlook, World Bank World Development Indicators*, various country statistical agencies.

1. Austria, Belgium, Switzerland, Germany, Denmark, Spain, Finland, France, Great Britain, Greece, Ireland, Italy, Netherlands, Norway, Portugal and Sweden.

2. China, Hong Kong, India, Indonesia, Malaysia, Phillipines, Singapore, South Korea, Taiwan, Thailand. First column average for 1982-1989.

3. Argentina, Brazil, Chile, Columbia, Ecuador, Mexico, Peru, Venezuela.

4. Bahrain, Egypt, Iran, Jordan, Kuwait, Lebanon, Libya, Oman, Qatar, Saudi Arabia, Syria, UAR, Yemen. Data as share of regional GDP.