
Trends in the Well-Being of the Aged and Their Prospects through 2030

Gary Burtless

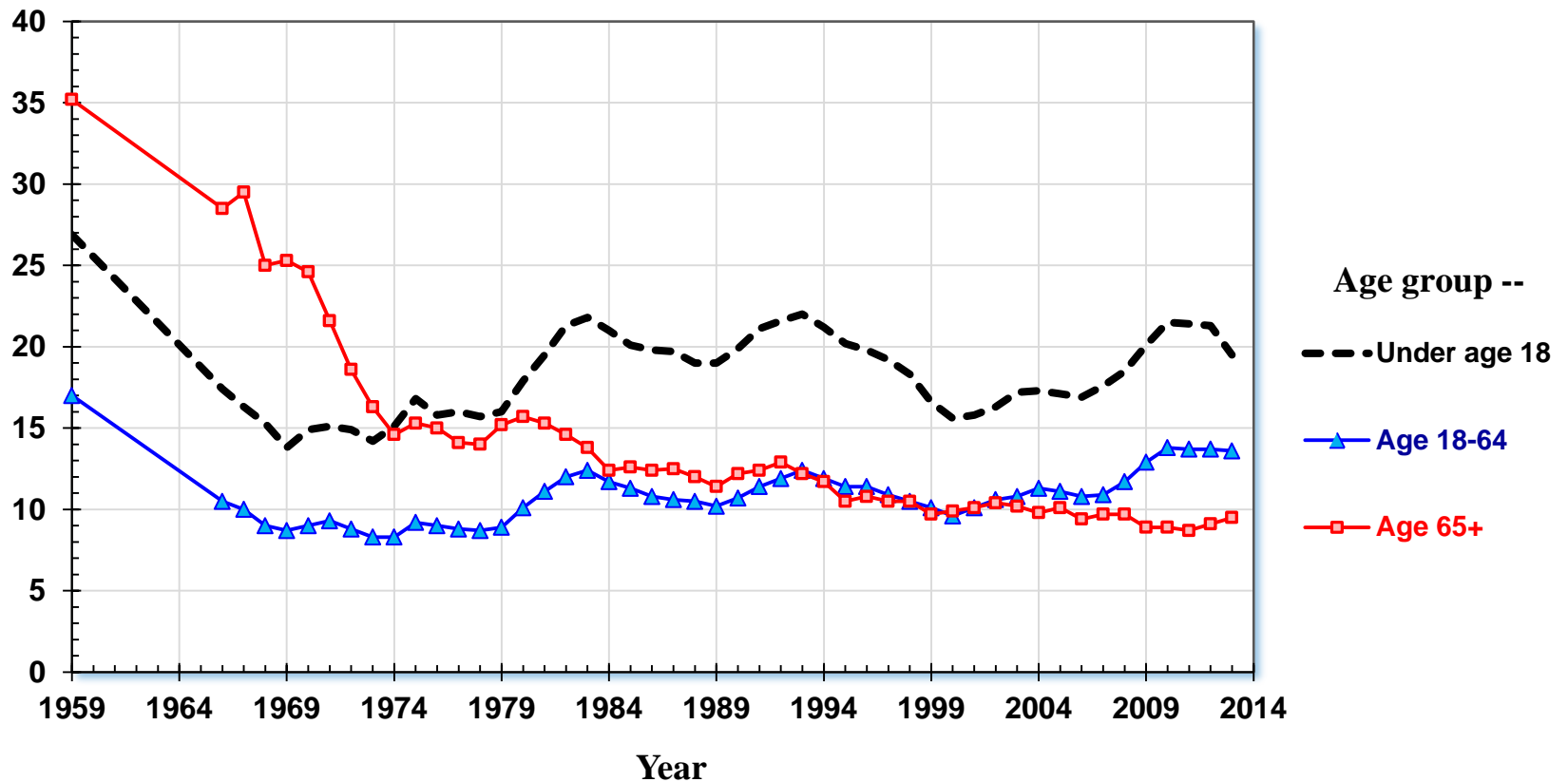
THE BROOKINGS INSTITUTION

Conference on “Medicare at 50”

June 5, 2015

Percent of Americans with Income below Official Poverty Line, by Age, 1959-2013

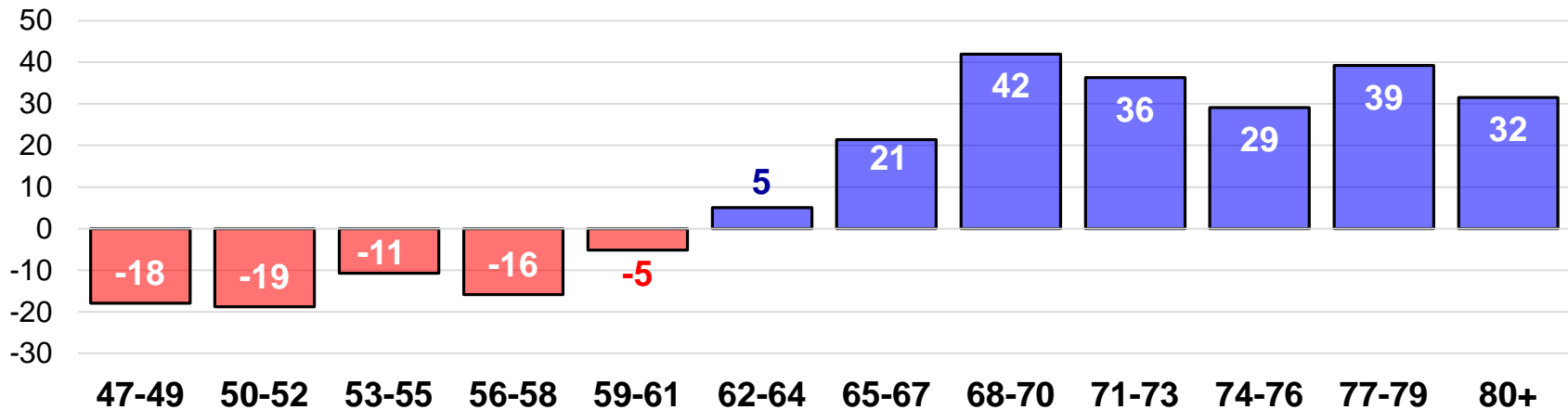
Percent of persons with income below official poverty line



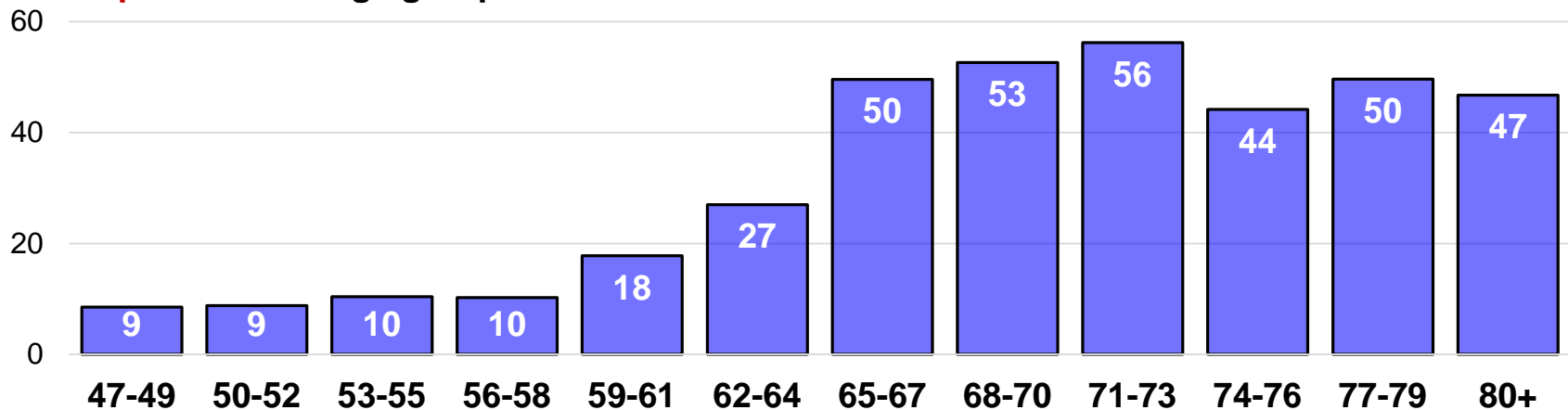
Source: U.S. Census Bureau.

Percent change in real income at 10th and 50th income percentiles, by age group, 1979-2012

10th percentile in age group

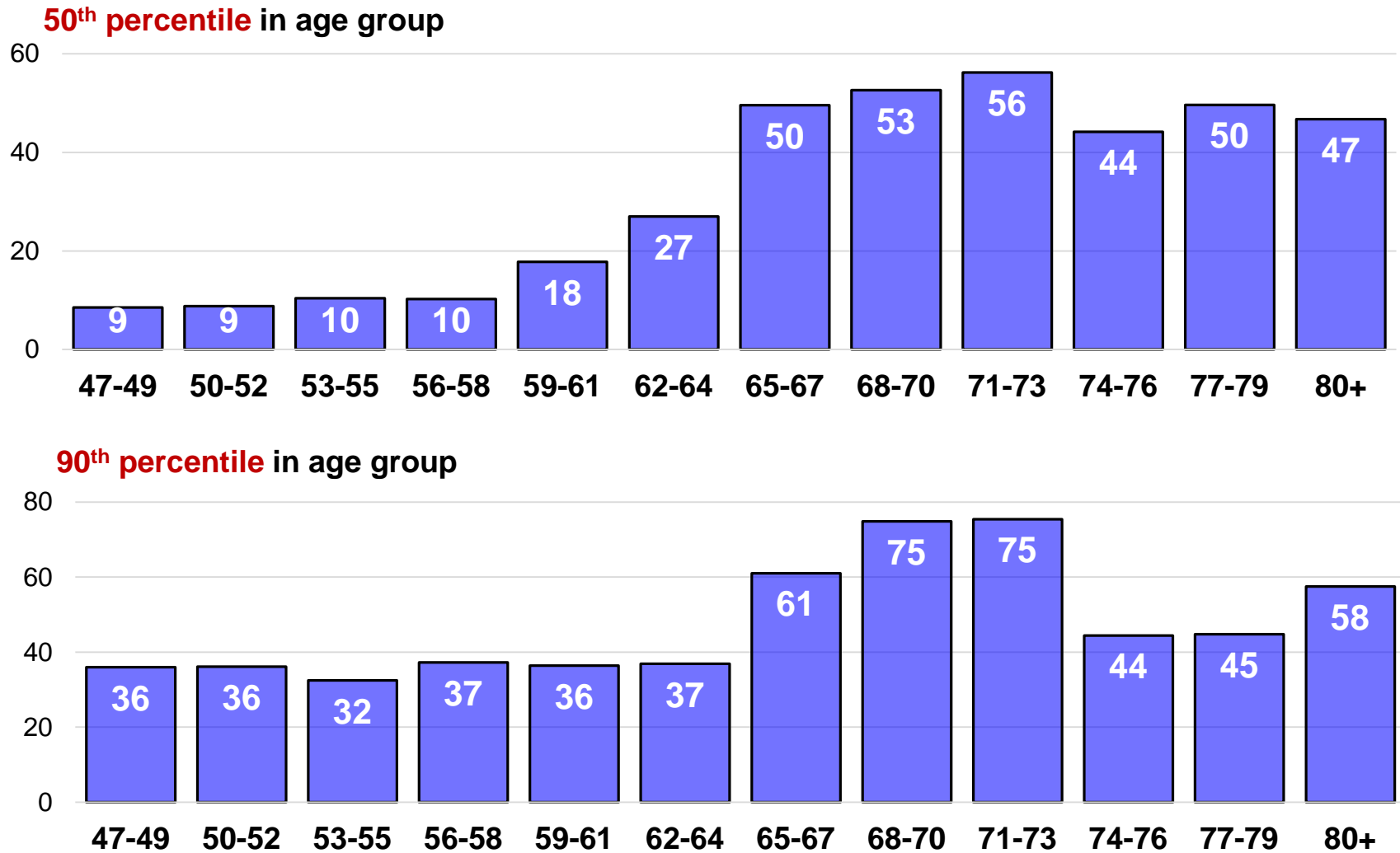


50th percentile in age group



Source: Author's calculations of household-size-adjusted income using March Current Population Survey files.

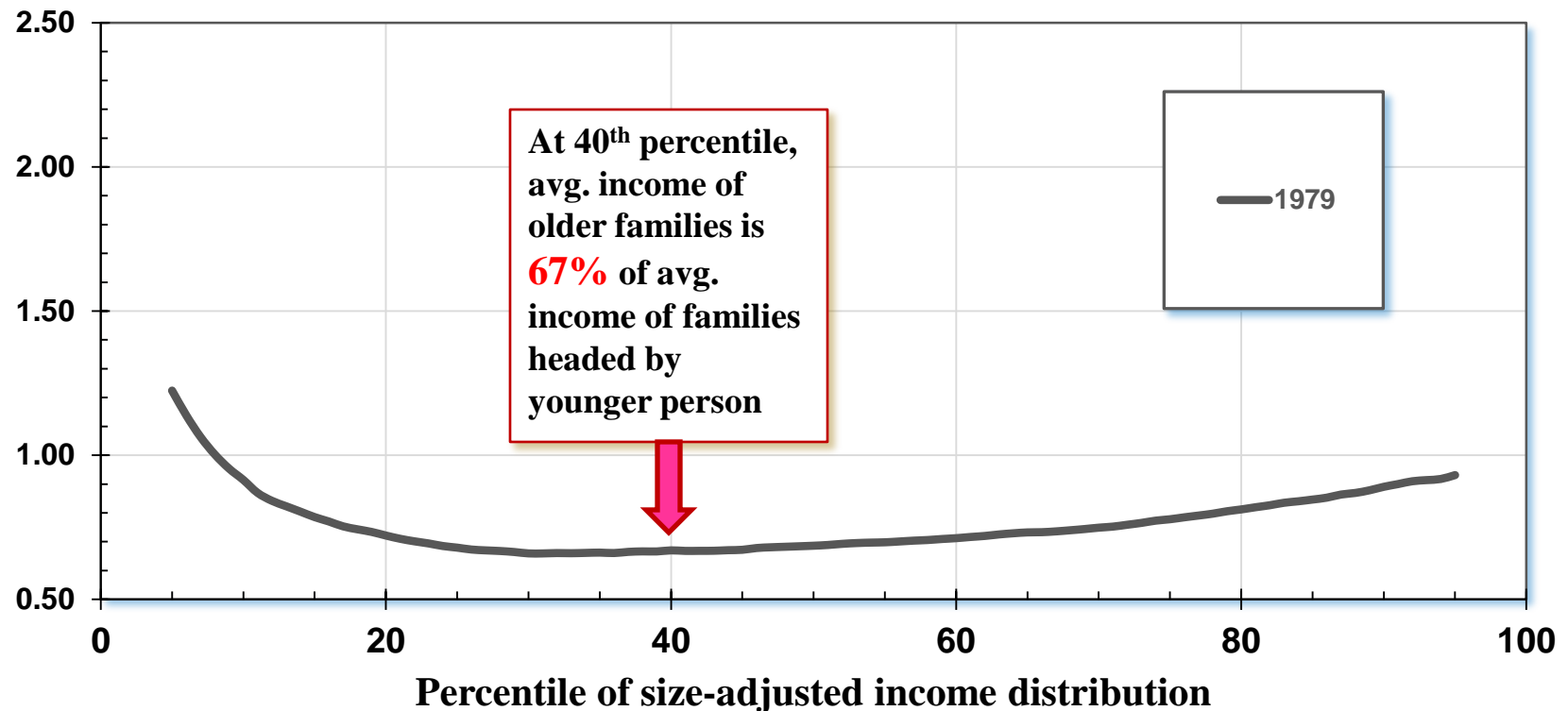
Percent change in real income at 50th and 90th income percentiles, by age group, 1979-2012



Source: Author's calculations of household-size-adjusted income using March Current Population Survey files.

Income Ratio of Old to Young by Position in Aged Family and Nonaged Family Income Distribution, 1979-2012

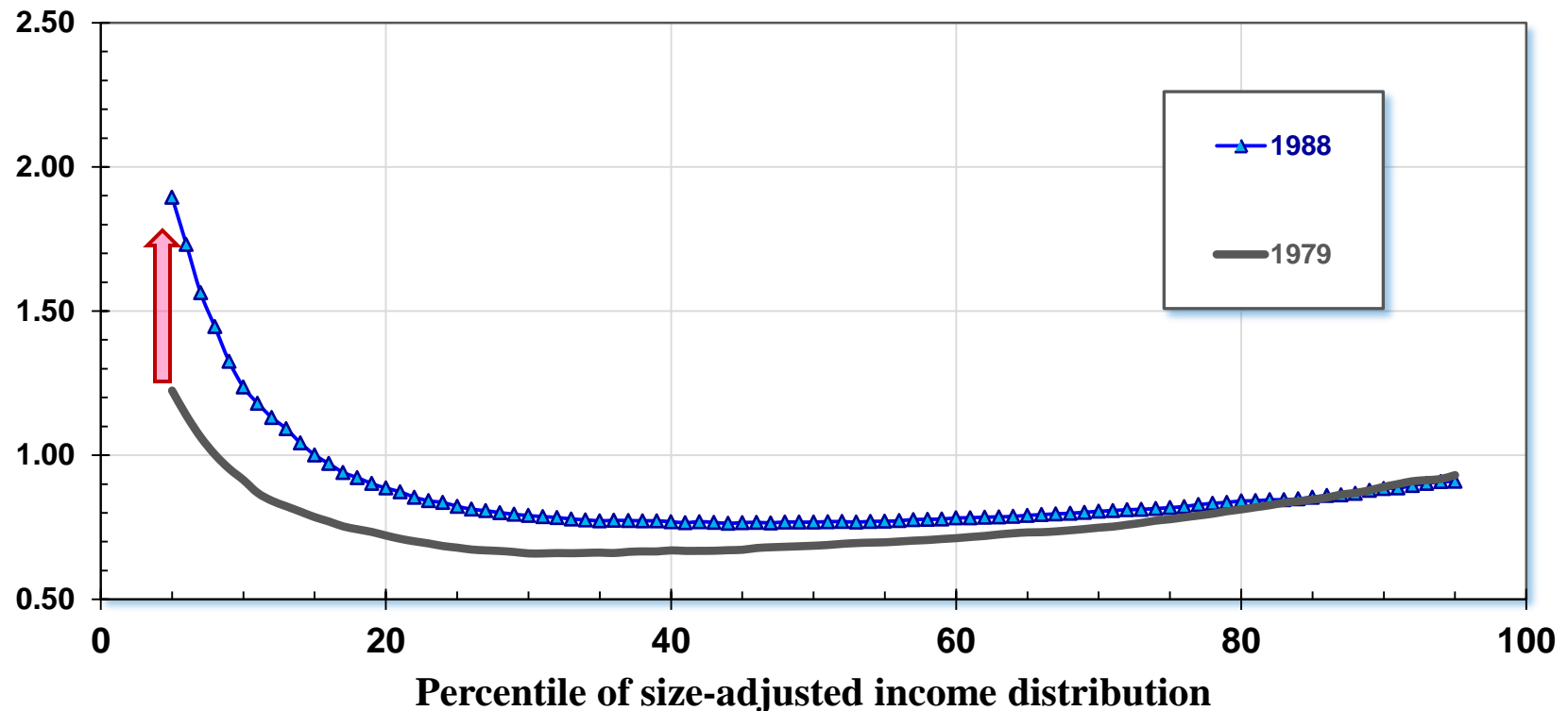
Income ratio of aged families compared with nonaged families at indicated position in the income distribution



Source: Author's calculations using March Current Population Survey files.

Income Ratio of Old to Young by Position in Aged Family and Nonaged Family Income Distribution, 1979-2012

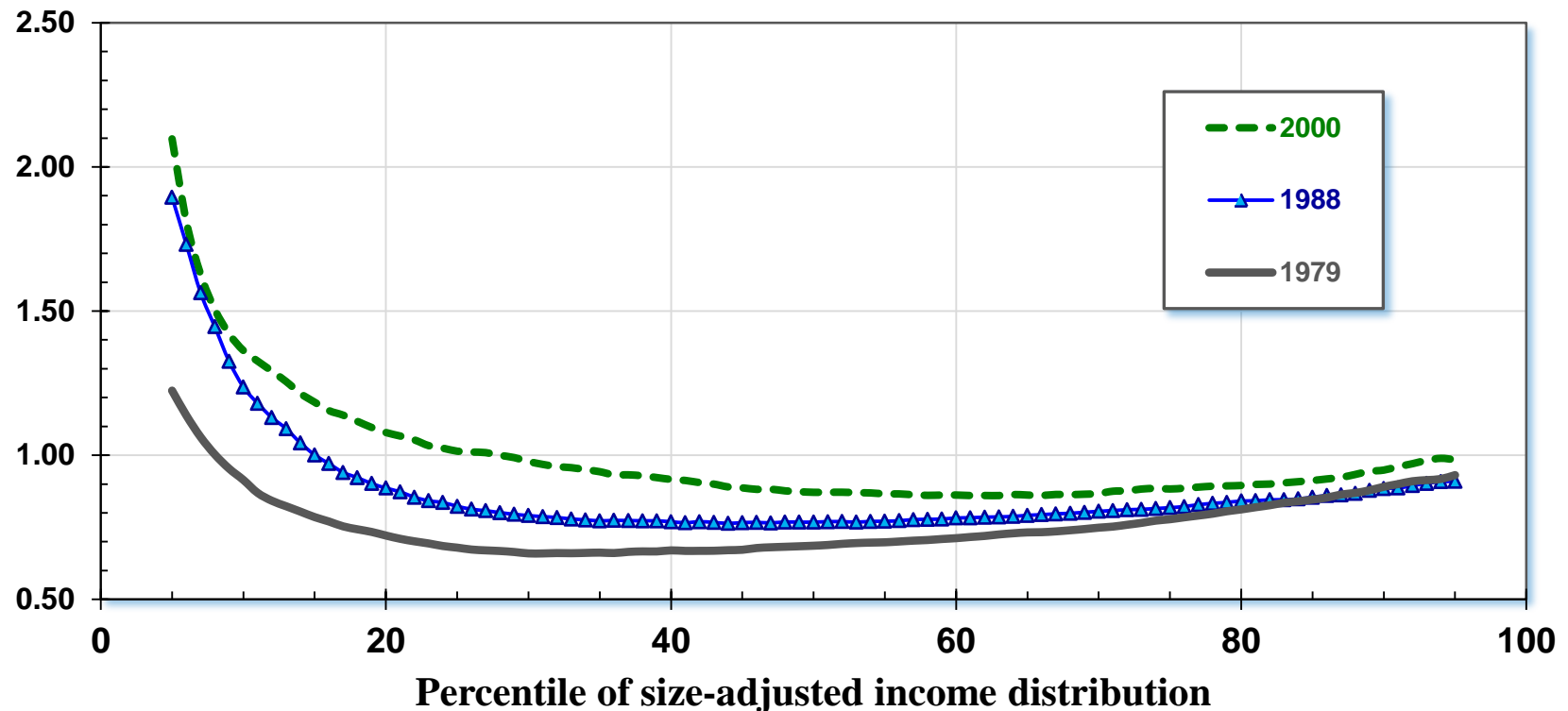
Income ratio of aged families compared with nonaged families at indicated position in the income distribution



Source: Author's calculations using March Current Population Survey files.

Income Ratio of Old to Young by Position in Aged Family and Nonaged Family Income Distribution, 1979-2012

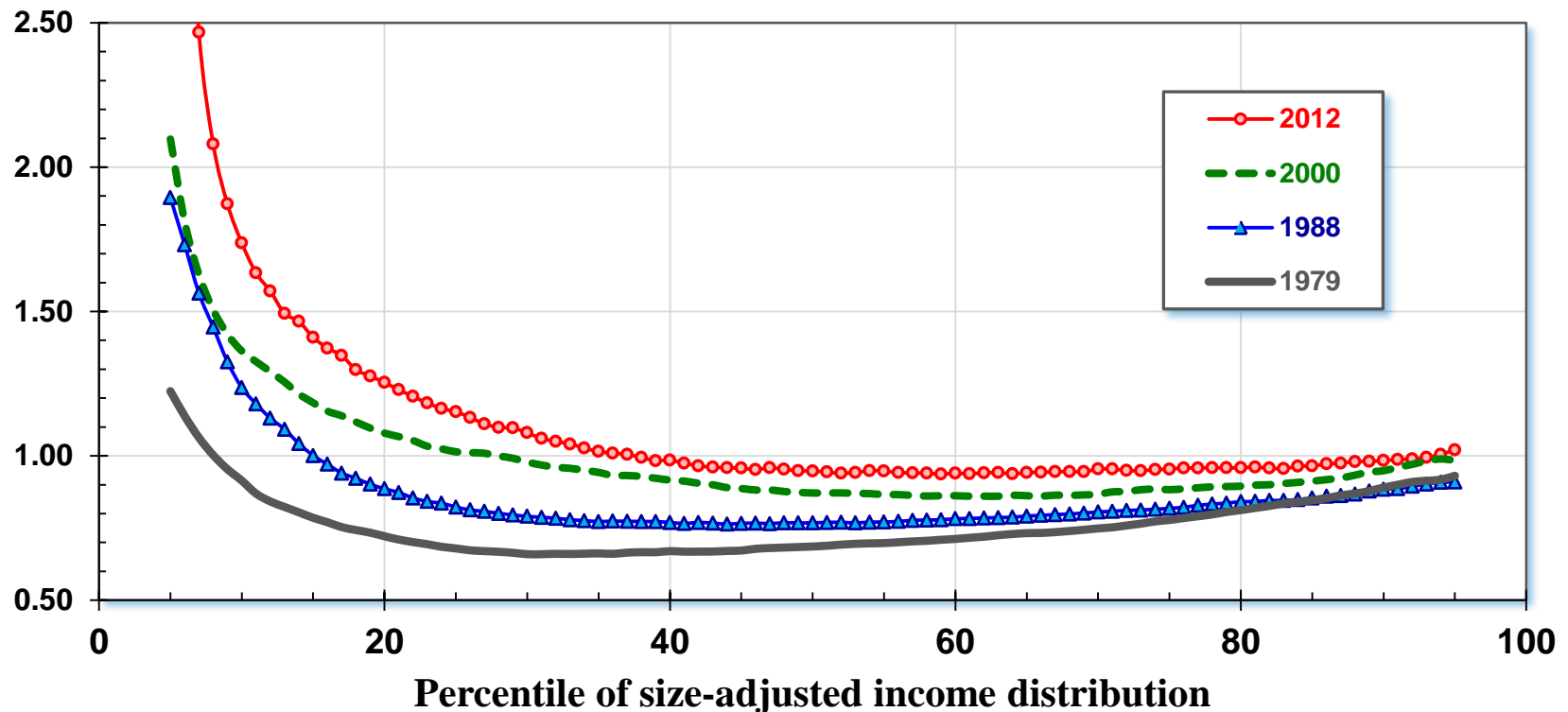
Income ratio of aged families compared with nonaged families at indicated position in the income distribution



Source: Author's calculations using March Current Population Survey files.

Income Ratio of Old to Young by Position in Aged Family and Nonaged Family Income Distribution, 1979-2012

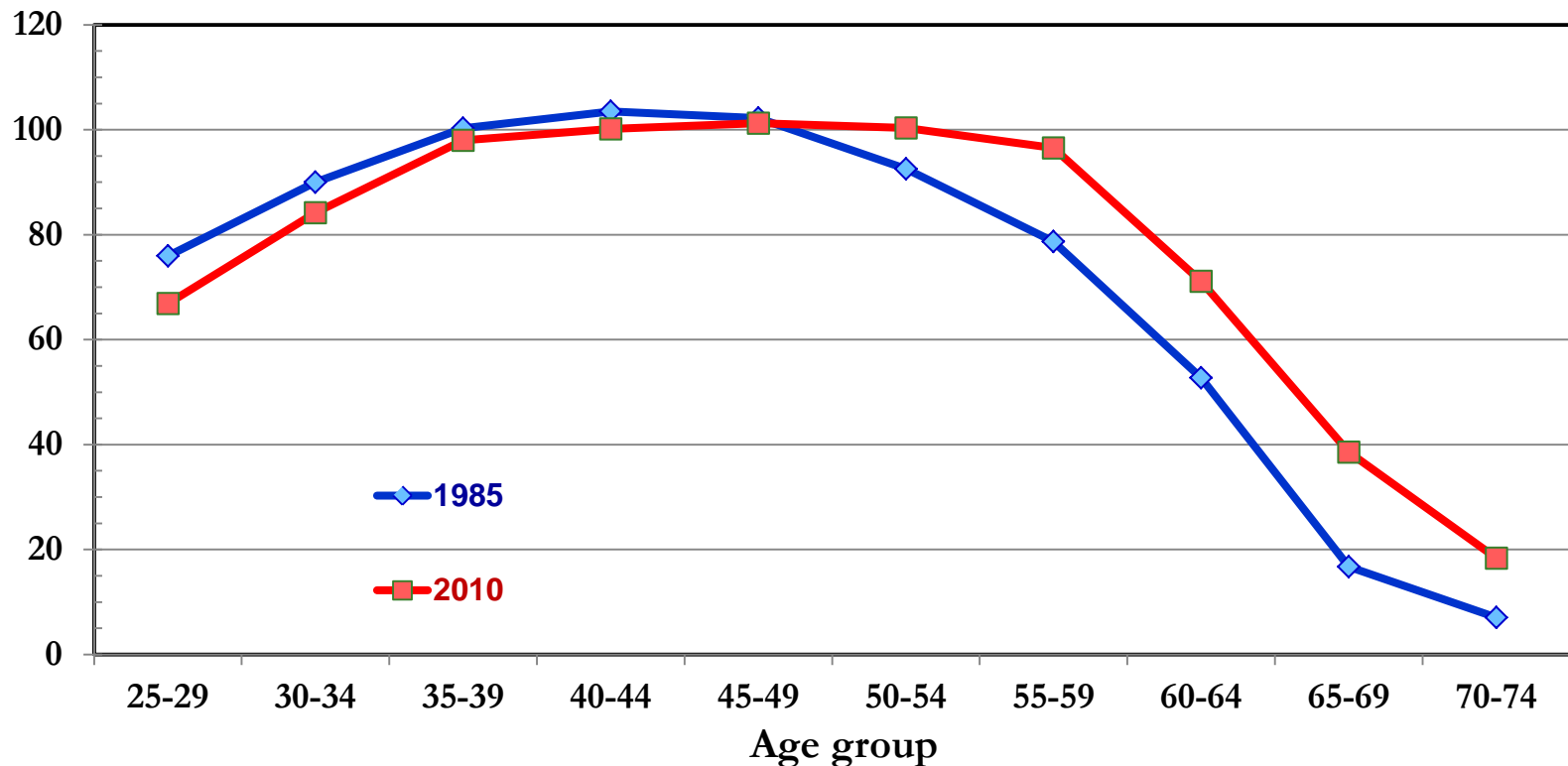
Income ratio of aged families compared with nonaged families at indicated position in the income distribution



Source: Author's calculations using March Current Population Survey files.

Age Profile of Annual Earned Income of U.S. Adults (Including Those with No Earnings), 1985 and 2010

Earnings as percent of average earned income of persons 35-54 years old
(Both sexes, including nonearners)



Source: Author's calculations using public-use Current Population Survey files.