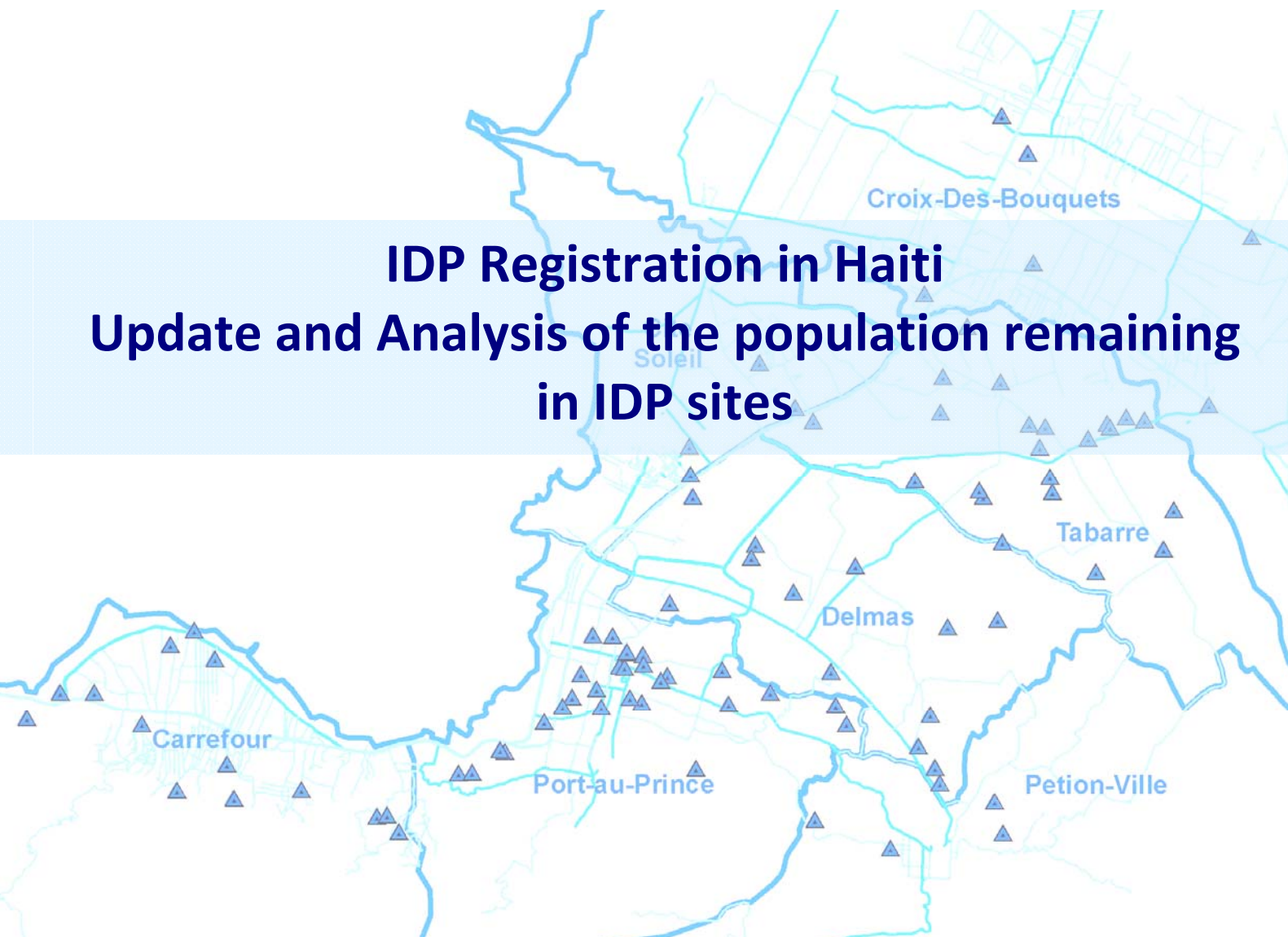




IOM International Organization for Migration

IDP Registration in Haiti

Update and Analysis of the population remaining in IDP sites



**Version: Short Analysis
December 2012**



ACKNOWLEDGEMENTS

Registration of Internally Displaced Persons (IDPs) in camps and camp-like settings began in February 2010, one month after the devastating earthquake that struck Haiti in January 2010. Implementation of this program requires a substantial amount of coordination, human resources and cooperation from the Government of Haiti (GoH) and reconstruction actors.

The International Organization for Migration (IOM) would like to acknowledge its successful partnership with the Government of Haiti (GoH) particularly through the Department of Civil Protection (DPC¹ in French) and the Unit for Construction of Housing and Public Buildings (UCLBP² in French). This partnership continues to be vital in ensuring successful implementation of data gathering and data sharing activities related to the registration process.

Daily field operations have required considerable security support that has been provided continuously by MINUSTAH³ and the Haitian National Police. Their flexible and supportive partnership has allowed several registration operations to be carried out in areas with high security risks through out the Port-au-Prince Metropolitan Area.

Lastly, IOM acknowledges the financial support provided by (in alphabetical order):



¹ Direction de la Protection Civile

² Unité de Construction des Logements et Bâtiments Publics

³ United Nations Stabilization Mission in Haiti.

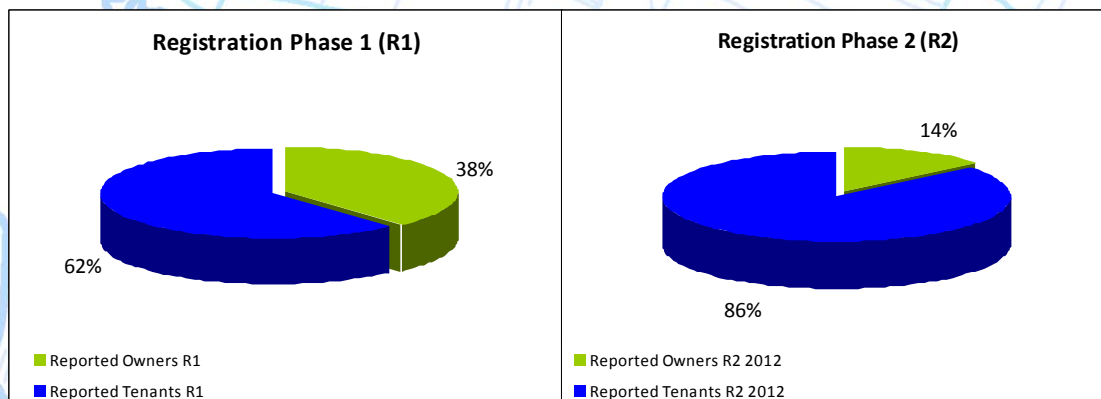


Highlights of the 2012 IDP Registration Analysis

Between January to August 2012 the IDP Registries in 91 IDP sites were updated. These sites hosted a total of 47,591 households or 13,836 individuals and the time of registration. This population was used as the sample population for this analysis.

Household structure has changed considerably between 2010 and 2012

At least 84% of the IDP population in 2012 was also present in 2010.

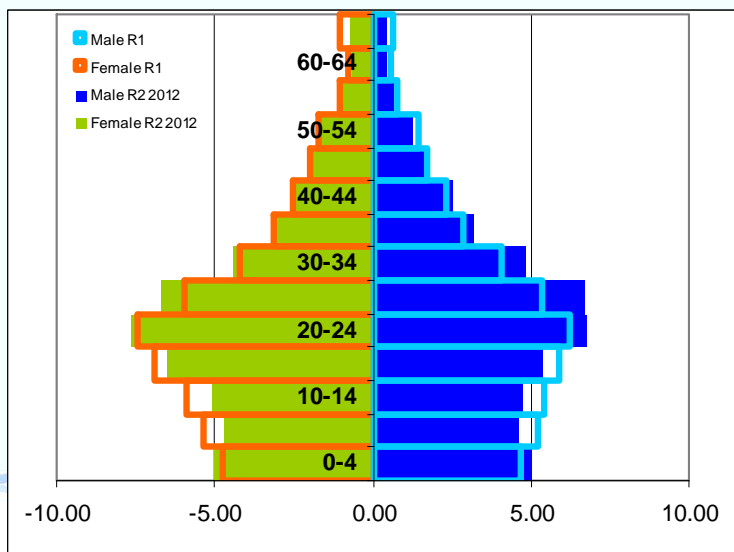


R1: Registration Phase one completed in 2010.

R2: Registration Phase 2 in 2012

In 2012, there are more households in IDP sites that were tenants before the earthquake

There are more single headed households remaining in IDP sites than couple headed households in 2012. Specifically, in 2012 57% of the population report being a single headed household compared to 48% in 2010.



Household size was decreased to 3.4 compared to 4.3 in 2010.

Also, there are more young people between the age of 20 to 39 in IDP sites in 2012 compared to 2010 with a greater increase of males than females.

On the other hand, there are less elderly people (65 years and older) and youth between the ages of 5 to 19.

2012	No. of IDP House-holds	No. In-dividual s	% Indi-viduals	Average House-hold size	Average age of Head of House-holds	Average age of Indi-viduals	Average N <15 yrs per House-holds
Type of Household (HH)							
Couple headed HH	6,041	24,207	50.5	4.0	34.7	22.9	1.4
Female headed HH	4,651	15,358	32.0	3.3	39.7	24.3	1.0
Male headed HH	3,144	8,026	16.7	2.6	34.2	26.6	0.4
TOTAL (2012)	13,836	47,591	100	3.4	36.0	23.8	1.0

INTRODUCTION

Almost three years after the devastating earthquake that struck Haiti in 2010, about 360,000 individuals continue to live in 496 IDP sites across the country⁴. This report aims to provide reconstruction actors in Haiti with an updated overview of the make up of the population remaining in camps and camp like settlements in Haiti. This report reflects the highlights of the analysis carried out by the IOM Data Management Unit in November 2012. A detailed, more comprehensive version is also available for partners with interest in more in depth information.

Background and Context

On 12 January 2010 a 7.0 magnitude earthquake struck Haiti resulting in large scale urban displacement. With over 1.3 million⁵ individuals identified in camps and camp like settlements in the first half of 2010 (these settlements are referred to throughout this report as IDP sites).

Early on in the humanitarian response it became evident that detailed demographic data was essential in order to develop effective and targeted programs to address the needs of the displaced population. In response to this, IOM began its IDP Registration operations in February 2010 in partnership with the Government of Haiti.

This data was at first used to guide emergency response activities in IDP sites and has since 2010 evolved and been updated to support reconstruction actors working to close camps and provide sustainable solutions for the displaced population.

Objectives of Registration

The primary objective of IDP registration in Haiti is to make available a count and profile of the displaced populations living in IDP sites Haiti. This data is used as a basis for identification of households and individuals in order to address their needs and identify solutions towards ending their displacement. Detailed household and individual data was essential in Haiti given the urban setting of the displacement and the mobility of the population.

Phases of Registration

The registration process in Haiti has been broken down into four phases that should be viewed as an ongoing and overlapping process from emergency response through to longer term development.

The four phases⁶ are as follows:

Phase 1: Emergency Registration: first-time registration of all IDPs due to the earthquake. Phase 1 includes the Port-au-Prince Metropolitan Area as well as the southern regions.

⁴ DTM Round 12 Narrative report, release October 2012. Full report is available at: www.iomhaitidataportal.info

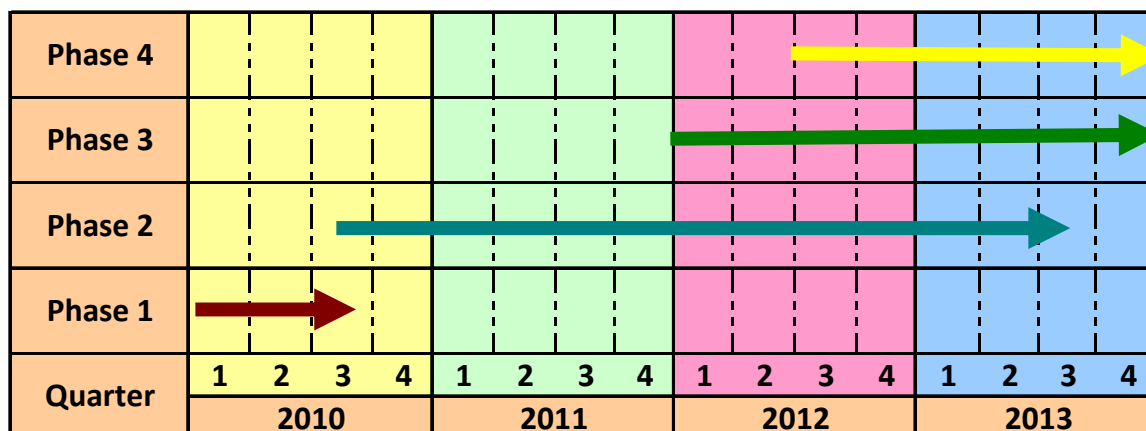
⁵ Estimates range between 1.3 to 1.5 million individuals were in camps and camp-like settlements at the height of displacement in 2010. For this report IOM uses the figure 1.3 million based on final results from Phase 1 Registration data.

⁶ Note that taking to account the changes in the overall situation in Haiti these phases have been slightly revised since their development in 2010.

Phase 2: Movement Verification and Updating of Existing Registry: verification and updating of data collected during Phase 1 to ensure that the information available to partners carrying out camp management and return⁷ programs are up to date.

Phase 3: Return and Referral: monitoring the return and identification of the most vulnerable groups for improved service planning.

Phase 4: Identification for Individual Assistance and De-registration: strengthening of Government structures to provide targeted services for the most vulnerable individuals, and de-registration of households that have returned.



Phase 1 of the registration process began at the end of February 2010 in priority sites⁸, identified by the Project Management Coordination Cell (PMCC)⁹ and was later expanded to include all identified IDP sites in the earthquake affected area. This initial phase was completed by October 2010 with Phase 2 beginning in the same month.

Phase 2 Registration was carried out only in sites upon the request of partners to support their camp management or return activities. This second Phase of Registration continues to be implemented as of this reporting period with most operations carried out in support of return activities.

Phase 3 of the process began in January 2012 and continues complementary to Phase 2 operations. This is commonly referred to as returns tracking.

Phase 4 of the process has also commenced as in the later quarters of 2012 and also continues in a parallel and complementary manner.

⁷ Return programs in Haiti are initiatives carried out by reconstruction partners with the objective for providing alternative housing solutions for the displaced population.

⁸ IDP sites with 1,000 households or more

⁹ The PMCC acted is the operational board of the Coordination Support Committee (CSC) to the Govt of Haiti. The PMCC is made up of the Joint Task Force (JTF) in Haiti, Minustah, donors, OCHA, CCCM cluster, as well as WASH, Shelter and Protection clusters.

BRIEF OVERVIEW OF METHODOLOGY

Data Gathering

Taking into consideration the context of post-earthquake Haiti, IDP registration methodology was developed to make every attempt to collect the most accurate data on the IDP population. The following procedures have been put in place so as to reduce the chances of duplication and inclusion of individuals not living in the IDP sites. Methodology for Phase 2 registration is identical to that of Phase 1 registration with some small alterations:

1. *Token distribution at household level:* IOM registration staff present themselves at the household (shelter) level on site. They verify the number of households living in each shelter¹⁰, and provide a token (one per household) that is to be taken by the head of household (HoH) to an identified fixed point within the site where the registration will occur. Household members must be physically present and the shelter and must show evidence that they are living in the shelter in order to receive a token. Tokens are available in various colors and use of the same or similar colors in surrounding neighboring sites is avoided, thus reducing the possibility of IDPs registering in more than one site. (Note: tokens are taken from HoH once he/she is provided with a registration card).

At all possible times, token distribution is carried out early in the morning (between 4:00 to 6:00 am) to ensure that households receive their tokens and are registered before leaving for work or other daily activities. This also decreases the possibility of people from outside the site accessing tokens. While this is the preferred method, it has not always been possible to go early to all sites for security reasons.

2. *Marking shelters and verification of residence:* Each shelter is numbered and marked with a sign to indicate the household has already received a token. Any claims by those who state they are residents but have not received a token are verified by looking at the markings on the tent, getting the claimant to enter the shelter and potentially show items to prove residence, and verifying with the camp committee and neighbors.
3. *Verification with camp committees and residents of the IDP site:* In the event that there is uncertainty about whether a household is living in the site, consultations with camp committees and residents can assist in determining the resident status of the household in question. IOM acknowledges the potential challenges of this verification method in cases where the camp committees do not provide accurate information (instead providing information aligned with personal interests, etc). This method of verification is only utilized when all other options have been exhausted.
4. *Replacement of registration cards:* For Phase 2 registration, IDPs are asked to surrender Phase 1 registration cards and are provided with Phase 2 cards. The serial numbers of the Phase 1 cards are recorded during the Phase 2 Registration and the Phase 1 card is destroyed. This reduces the risk of families having several registration cards. Further more, recording serial numbers of Phase 1 cards enables the tracking of the movement of the IDP household. In some cases, IDPs were registered (Phase 1) in one site and later on were registered in a second site at Phase 2 registration. In cases where IDPs report never being registered, their information is taken during Phase 2 registration and

¹⁰ A household is defined a group of people who live together and share resources.

confirmed at the data cleaning and verification stage to validate that the household was never registered.

5. *Data Cleaning and Verification of data:* Once the data has been entered into the database, the information is cleaned and verified for errors and duplication. For example, each households are asked to present identification during the initial registration process (NIF # – identification, CIN # – electoral card). In Phase 2 Registration, the information gathered from Phase 1 is matched and information on each household is then updated accordingly. For households that are not found in the database, new records are created and stored. All data fields are reviewed and if duplicates are identified, the error is rectified.

It is important to highlight that registration staff are trained and have more than two years of experience in identifying inconsistencies in household composition reported by the IDPs and to probe in order to receive the most accurate information possible.

Data Analysis

The results of the registration by IDP site are reflective of the period of time in which the site was registered. For instance, if Phase 2 registration in a given site was carried out in June 2012, any changes that occur in that site after June 2012 are not reflected in the report. When looking at the registration list for each site, the date of registration must be taken into consideration. IOM works closely with Camp Management Agencies (CMAs), Camp Management Officers (CMOs) and other partners to update the register where possible.

Phase 2 Registration is carried out by IOM field assessment teams, upon request by partner organizations with planned interventions. Moreover, Phase 2 Registration data analyzed for this report reflects only registrations carried out between January and August 2012.

The data is collected through direct interviews with the Head of Household (or the representative who is present at the moment of the interview if the head is absent). The IDP Registration Form (see Annex 1) collects household level information, and individual demographic information on all reported household members. Information that is collected only at the household level is attributed to all household members for the sake of this report. As a result, when information collected at household level is used for analysis at the individual level the figures must be interpreted as: “...(number) individuals living in a household whose head declared that ...”.

Missing values are reported separately (See Annex 2) rather than being proportionally reattributed. As a result, totals and percentages do not include missing values and percentages may not always be comparable.

Though there is a selection bias in the sample, the population included in the analysis is large enough to be representative of the total IDP population in camps and camp-like settlements. Mindful of these limitations, the overall results of this analysis provide a useful overview of the characteristics of the displaced population in Haiti in 2012.

In this report Phase 2 Data is compared to three other main sources:

- 1) **National Census Data:** The last national census was carried out in 2003 by the national statistics office (Institute Haitien de Statistique et d'Informatique, IHSI). The reference population used from this report includes only the populations in Carrefour, Cite Soleil, Croix-des-Bouquets, Delmas, Petion-Ville, Port-au-Prince and Tabarre.
- 2) **Registration Phase 1 Data:** Phase 1 Registration was carried out from February 2010 up to October 2010. Coverage of Phase 1 Registration included all identified open IDP sites across the earthquake affected area. A total of 1,273 IDP sites hosting about 321,235 households or 1,360,319 individuals were included in this phase of registration. The full report is available on the DTM website: www.iomhaitidataportal.info
- 3) **Demographic Health Survey (DHS):** For this report IOM compares IDP Registration to the Preliminary results of the DHS released in September 2012.

Key Terms

Internally Displaced Persons (IDP): The Guiding Principles on Internal Displacement describes internally displaced persons as: "Persons or groups of persons who have been forced or obliged to flee or to leave their homes or places of habitual residence, in particular as a result of or in order to avoid the effects of armed conflict, situations of generalised violence, violations of human rights or natural or human-made disasters, and who have not crossed an internationally recognised state border"¹¹.

For the purpose of this analysis, an IDP is identified as is anyone who is found living on the site at the time of registration.

IDP Household: An IDP household is a group of people found living in the same shelter within a site, sharing resources while living in the camp or camp-like settlement.

Coverage –Representativeness

This report highlight findings from Phase 2 registrations carried out in 2012. Specifically, between January to August 2012. Within this period a total of 91 IDP sites were registered hosting a total of 13,836 households or 47,591 individuals in the seven communes of the PaP Metropolitan area: Port-au-Prince, Delmas, Carrefour, Tabarre, Croix-des-Bouquets, Cite Soleil and Petion-ville (see Map 1.1).

¹¹ Guiding Principles on Internal Displacement, United Nations Publication, E/CN.4/1998/53/Add.2, 2001

Table 1.1: Distribution of IDP individuals and households by Commune of IDP site

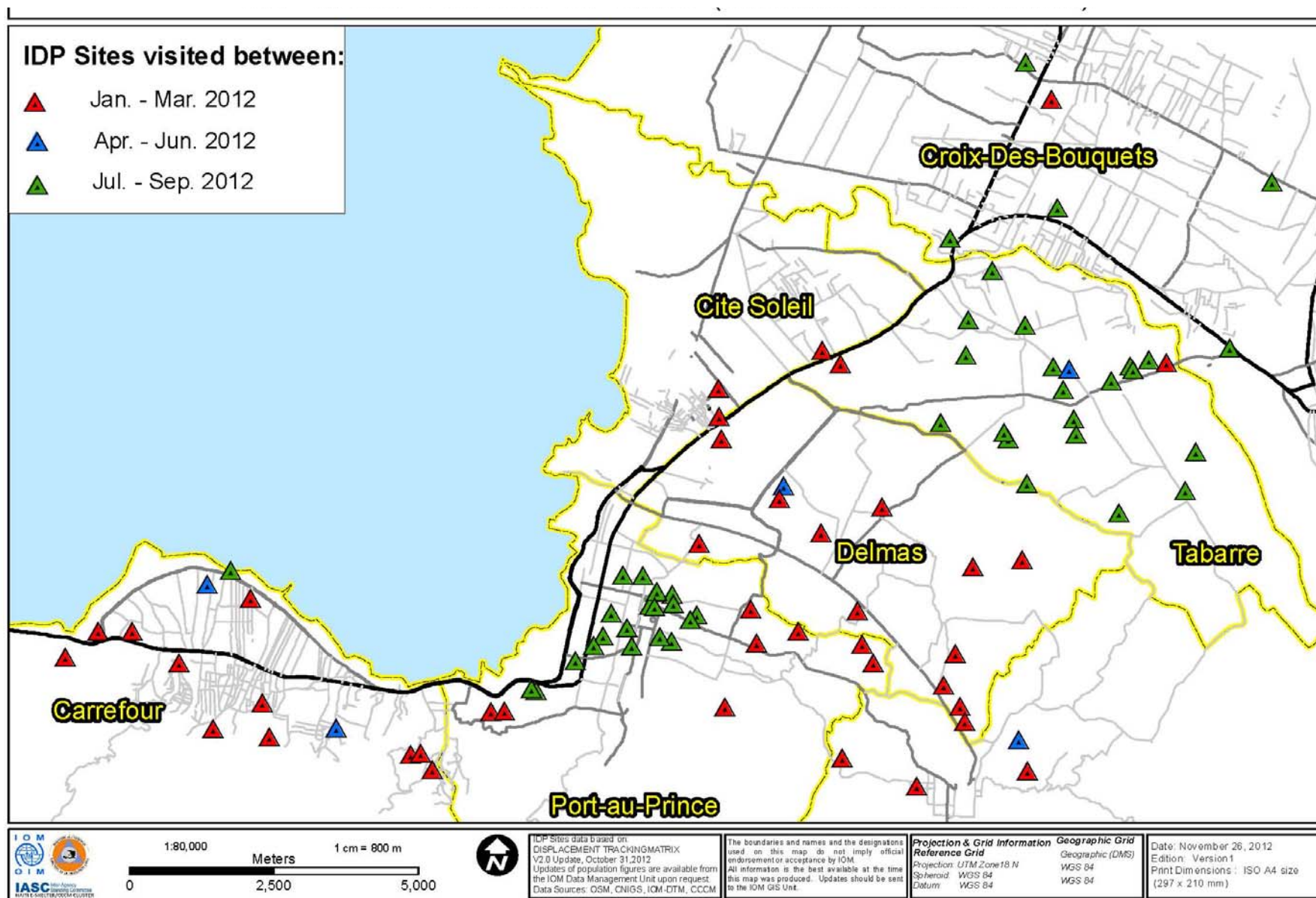
Commune of IDP Site	2012			
	No. IDP sites	No. Individuals	No. Households	% Households
Carrefour	14	7,870	2,112	15.3
Cite Soleil	4	4,724	1,094	7.9
Croix-des-Bouquets	6	122	43	0.3
Delmas	13	3,717	1,067	7.7
Petion-ville	4	1,924	557	4.0
Port-au-Prince	28	26,977	8,222	59.4
Tabarre	22	2,257	741	5.4
Quarter	No. sites	No. Individuals	No. Households	% Households
Jan-Mar	40	33,753	9,378	67.8
Apr-Jun	5	6,015	1,693	12.2
July-Sept	46	7,823	2,765	20.0
TOTAL (2012)	91	47,591	13,836	100

Registration Phase 2 data within this period accounts for 20% of the entire IDP population (households) as reported by the latest DTM report published in October 2012 (referring to the period September-October 2012).

When compared to Phase 1 registration this sample accounts for 10 % of the IDP household population included in the Phase 1 analysis in 2010.



Map 1.2: IDP sites registered in 2012



RESULTS

1. Demographics

Comparison of IDP population to the neighborhood population

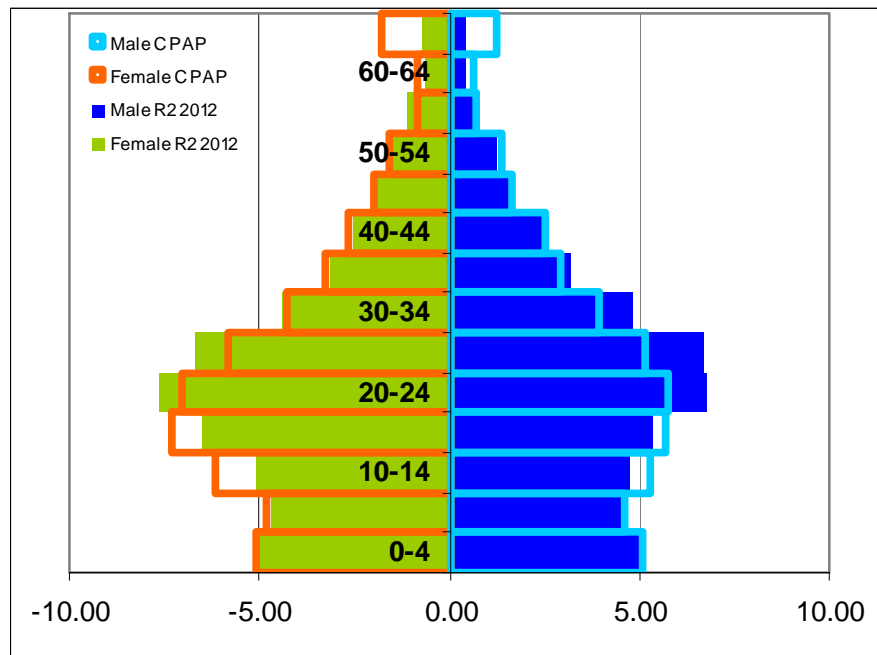
52% of individuals in IDP sites are female while 48% is male. This proportion is similar to that observed in the neighborhoods

Using the National Census¹² in 2003 as a baseline for the demographics of the neighborhoods, similarities in the proportion of men and women are observed. Specifically, the census reports that about 53% of the population is female and 47% is male while Phase 2 Registration data reports about 52% of the population in IDP sites is female and 48% is male. Similarities are also observed in the fact that majority of the population is below the age of 30: 69% of the IDP population in Registration Phase 2 compared to 68% in the census.

However, some interesting differences are also observed particularly in that there are fewer children (between the ages of 10 to 18) and fewer elderly people (individuals 65 years or older) in IDP sites than compared to the neighborhoods. In addition to this, there are also more adults in the age range of 20-39, predominantly more males in this category.

There are fewer children and elderly people in IDP sites compared to the neighborhood

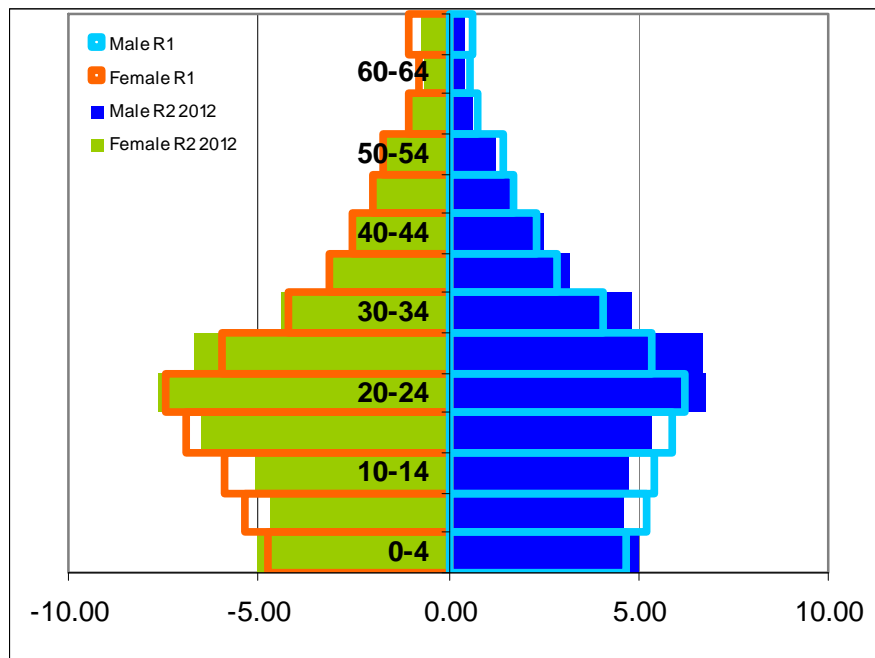
Graph 1.3: Age pyramid (percentage) in IDP Sites by individuals (Male and Female R2 2012) compared to neighborhood/2003 Census (Male and Female C PAP)



¹² 2003 National Census: Institut Haïtien de Statistique et d'Informatique(IHSI)

Comparison of IDP population over time (Phase 1 vs Phase 2 data)

Graph 1.4: Age Pyramid (percentage) in IDP sites comparing Phase 1 (R1) and Phase 2 (R2) Registration data by IDP Individuals



IDP Population by Sex

Overall ratio of men to women has not changed considerably between Phase 1 and Phase 2 registration. Specifically: IDP population registered in Phase 2 is 52% female and 48% male compared to 53% and 47% respectively in Phase 1.

IDP Population by Age

When comparing the population by age, it can be observed that between Phase 1 and Phase 2 registration there has been an increase of children between the years of 0 to 4 as well as youth between the ages of 20 to 39.

On the other hand there is a decrease in populations between the ages of 5 to 19 and also fewer elderly people (persons 65 years and older) in Phase 2 compared to Phase 1 Registration.

Compared to Phase 1 Registration, there are more children between the ages of 0 to 4 in IDP sites and more young adults between the ages of 20 to 39

Table 1.5: Women in Reproductive Age (WRA), children, adolescents, young and old (Percentage by individuals) in IDP Sites

Population group	Age group	No. Registration Phase 2	% Registration Phase 2	% Registration Phase 1	% Census
WRA	15-44	14,644	30.9	30.2	24.7
Children	0-9	9,136	19.3	20.0	23.7
Adolescents	10-14	4,650	9.8	11.4	12.8
Young	15-19	5,603	11.8	12.8	11.8
Active population (working age)	15-64	33,027	69.7	66.9	58.3
Elderly	60+	1,076	2.3	3.0	7.4

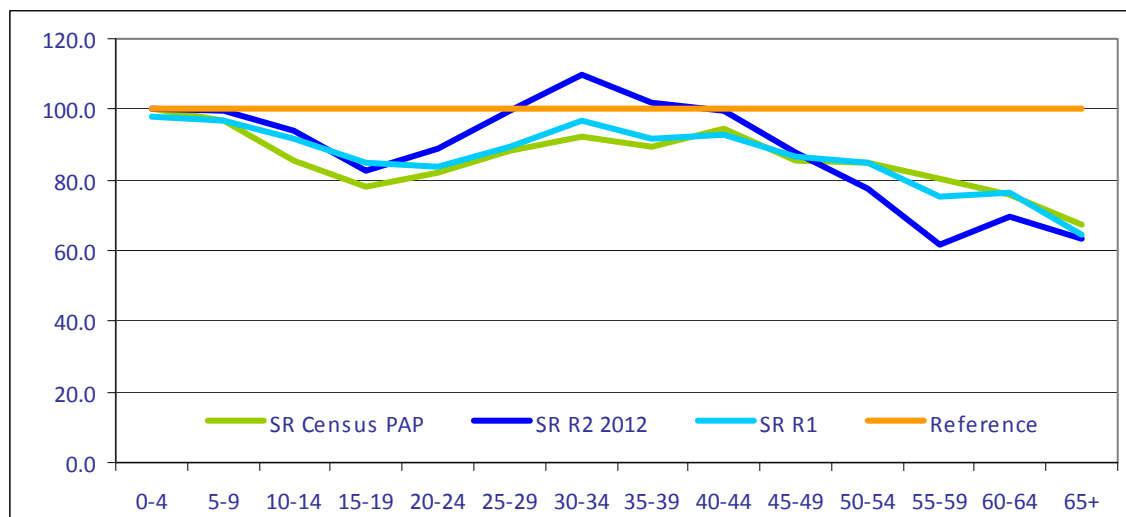
Further analysis of the population in IDP sites illustrate that there are more women of reproductive age in IDP sites compared to the neighborhood. However when comparing the proportion in IDP sites over time (between Phase 1 and Phase 2 data), no large changes are observed: 30.9% in Phase 2 compared to the 30.2% reported in Phase 1.

There are also more individuals of working age (between 16 to 64 years old) in the IDP sites compared to the neighborhood: 69.7% (Phase 2 Registration) compared to 58.3% based on the national census. Moreover, the slight increase in this age group between Phase 1 and Phase 2 registration is also interesting to highlight from 66.9 % in Phase 1 to 69.7% in Phase 2.

On the other hand, it is observed that there are fewer children between the ages of 0 to 9 years old in IDP sites compared to the neighborhood: 19.3 % in IDP sites compared to 23.7% based on the national census. Also, there are less elderly individuals (65 years and older) in IDP sites (2.3%) compared to the neighborhood (7.4%).



Graph 1.6: Age Specific Sex Ratio (men to women) of the IDP population by age groups



Note: The reference line (orange) illustrates a ratio of 100:100 men to women.

There are more males between the ages of 20 to 39 in IDP sites in 2012 compared to 2010 and also when compared to the neighborhood.

Further comparison of the population by sex and age group reflect an increase in males between the ages of 20 to 39 at the time of Phase 2 Registration compared to Phase 1 Registration and the census. On the other hand, there is a decrease in males in IDP sites over the age of 45 years.

New People in IDP Sites

At least 84% of the IDP population in 2012 was also present in 2010.

When comparing the IDP population registered in 2010 (Phase 1) to that registered in 2012 (Phase 2) it is observed that 84% of the population found in sites in 2012 were also found present in 2010.

2. Household structure and composition

Overall household size in Registered IDP sites has decreased since 2010 with an average household size of 3.4 at present compared to 4.3 in 2010. Moreover, there are more single headed households (both male and female) in 2012 compared to Phase 1 Registration. However, average age of IDPs have not changed substantially in the past 2 years with average age of individuals reported as 23.8 in both Phase 1 and Phase 2. Along the same lines, only a slight change in age was observed in average age of head of household 36.4 in Phase 2 and 38.2 in Phase 1.

It is interesting to note that though couple headed households account for about 43% of households in IDP sites, when looking at the IDP individual population majority (51%) of the population report belonging to a couple headed household.

Meanwhile, 32% of the individual population reports being part of single headed, female households while the remainder: 17% of the population report being a part of male headed households.

Furthermore it is also of interest to note that only about 30% of single, male headed households have a child less than 15 years of age.

Table 2.1: Distribution (Number and Percentage) of IDP individuals and households, average Household size, average age of Household and individual by Commune of IDP site, quarter and Head of Household

2012	No. of IDP Households	No. Individuals	% Individuals	Average Household size	Average age of Head of Households	Average age of Individuals	Average N <15 yrs per Households
Carrefour	2,112	7,870	16.4	3.7	37.3	23.2	1.2
Cite Soleil	1,094	4,724	9.9	4.3	38.4	22.5	1.6
Croix-des-Bouquets	43	122	0.3	2.8	37.7	24.5	0.9
Delmas	1,067	3,717	7.8	3.5	35.2	23.9	1.0
Petion-ville	557	1,924	4.0	3.5	36.6	23.9	1.0
Port-au-Prince	8,222	26,977	56.3	3.3	36.0	24.5	0.9
Tabarre	741	2,257	4.7	3.0	35.0	24.2	0.8
Quarter							
Jan-Mar	9,378	33,753	70.4	3.6	36.4	23.7	1.1
Apr-Jun	1,693	6,015	12.5	3.6	36.2	23.7	1.1
July-Sept	2,765	7,823	16.3	2.8	36.1	25.6	0.7
Type of Household (HH)							
Couple headed HH	6,041	24,207	50.9	4.0	34.7	22.9	1.4
Female headed HH	4,651	15,358	32.3	3.3	39.7	24.3	1.0
Male headed HH	3,144	8,026	16.9	2.6	34.2	26.6	0.4
TOTAL (2012)	13,836	47,591	100	3.4	36.0	23.8	1.0

Average Household Size

Overall household size based on Phase 2 registration this period averages 3.4 individuals per household. This is smaller than the average size observed in the neighborhood: 4.7 based on census data and smaller than the 4.3 average that reported in Phase 1 Registration for the Port-au-Prince metropolitan area.

Average household size is smaller in IDP sites in 2012 compared to 2010 and when compared to the neighborhood.

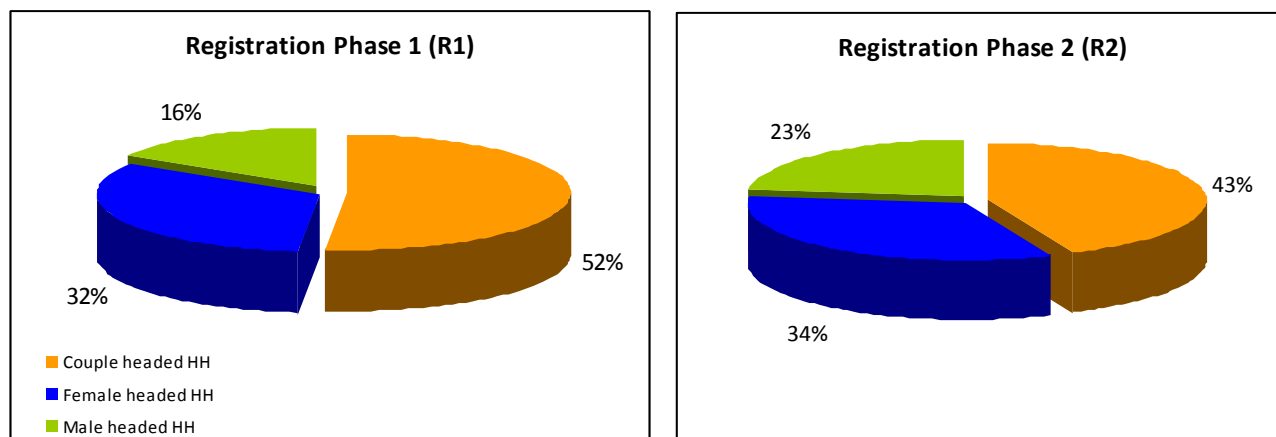
When looking into average household size by commune the following is observed: the average household size ranges from 2.8 or 3 in Croix- des-Bouquets (with a very small sample) and Port-au-Prince, up to 4.3 in Cite Soleil.

Type of Household: Couple vs. Single Headed

Majority of registered IDP households (57%) report being single headed. Specifically: 34% of households report being single and headed by women while 23% of households report being single and headed by men. The remaining 43% of registered households report being in a partnership household (couple headed) whether married or cohabitating.

When compared to Phase 1 registration data, it is interesting to note a considerable decrease in couple headed households: 52% of households registered in Phase 1 reported being couple headed compared to the 43% in Phase 2.

Chart 2.2: Comparison of IDP households (percentage) by type: couple headed, single female or single male headed

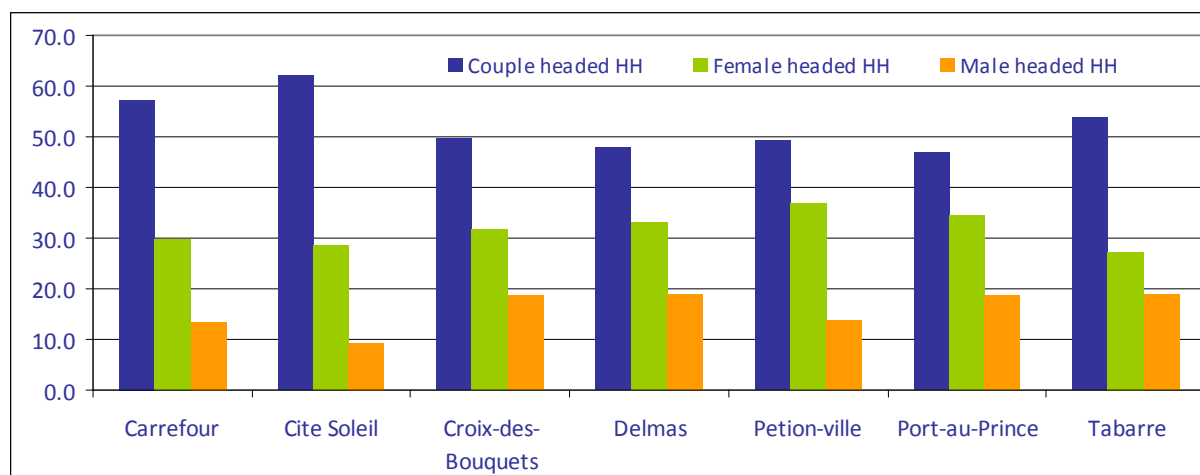


Meanwhile, an increase in single headed households is observed: 48% of IDP households registered in the first phase reported being single headed (32% single female headed and 16% single male headed) compared to the 57% reported in Phase 2 Registration in 2012 (34 % female headed and 23% male headed).

However, when looking at the Phase 2 registration by commune the largest percentage of couple headed households is found in the commune of Cite Soleil while the largest percentages of single, male

headed households are observed in Delmas and Tabarre while Petion-ville reports the highest percentages of single, female headed households.

Graph 2.3: Distribution (percentage) of households by type



3. Education

Phase 2 Registration Data for this period reflects an overall Net Enrollment Rate (NER) 39.3 % for males and 38.9% for females. When comparing the population reported as attending primary school, it is observed that there is a higher rate of enrollment for children living in IDP sites compared to the neighborhood¹³. This finding is consistent with that of the latest Demographic Health Survey (DHS) preliminary report released in September 2012. Specifically, DHS data show Primary Net Enrollment Rate (NER)¹⁴ in IDP sites and overall population as similar: about 77% compared to 80% found in Phase 2 Registration.

However, it is observed that there are less children enrolled in secondary school compared to primary school. This trend is also consistent with what is reported in the DHS and is reflective of the overall situation in neighborhoods: DHS data shows secondary NER in IDP sites as 32% and overall NER as 25% while Registration Phase 2 data reports a NER of 14%.

Education in absolute numbers

Approximately 35% of the population in Registration Phase 2 is reported as being in school at the time of registration while about 9% report never having attended school.

¹³ Neighborhood data is taken from the latest Demographic Health Survey (DHS): Institut Haïtien de l'Enfance (IHE)

and

MEASURE DHS

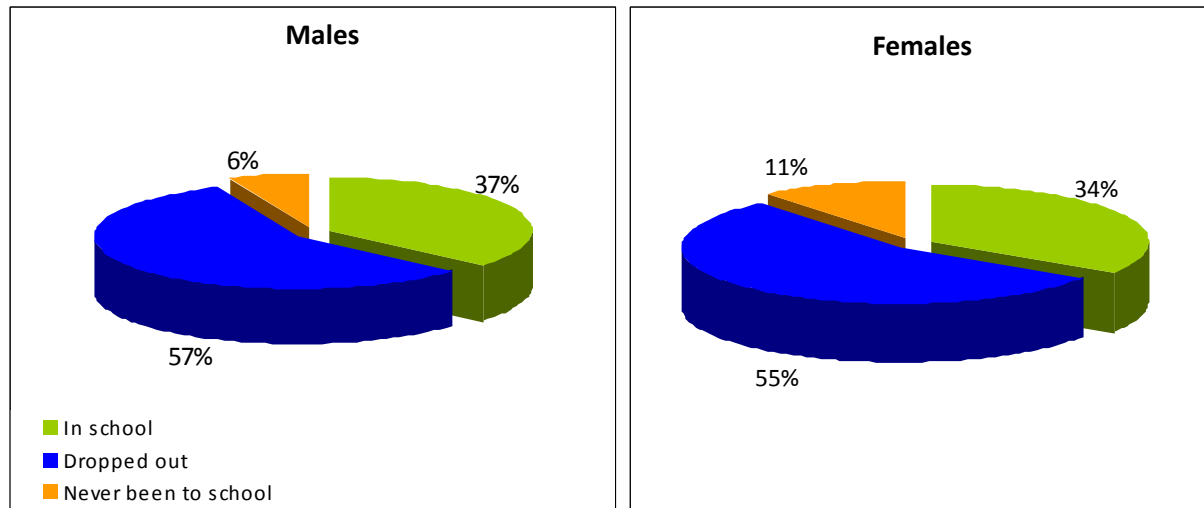
ICF International

2012 *Enquête Mortalité, Morbidité et Utilisation des Services EMMUS-V. preliminary report (September 2012)*

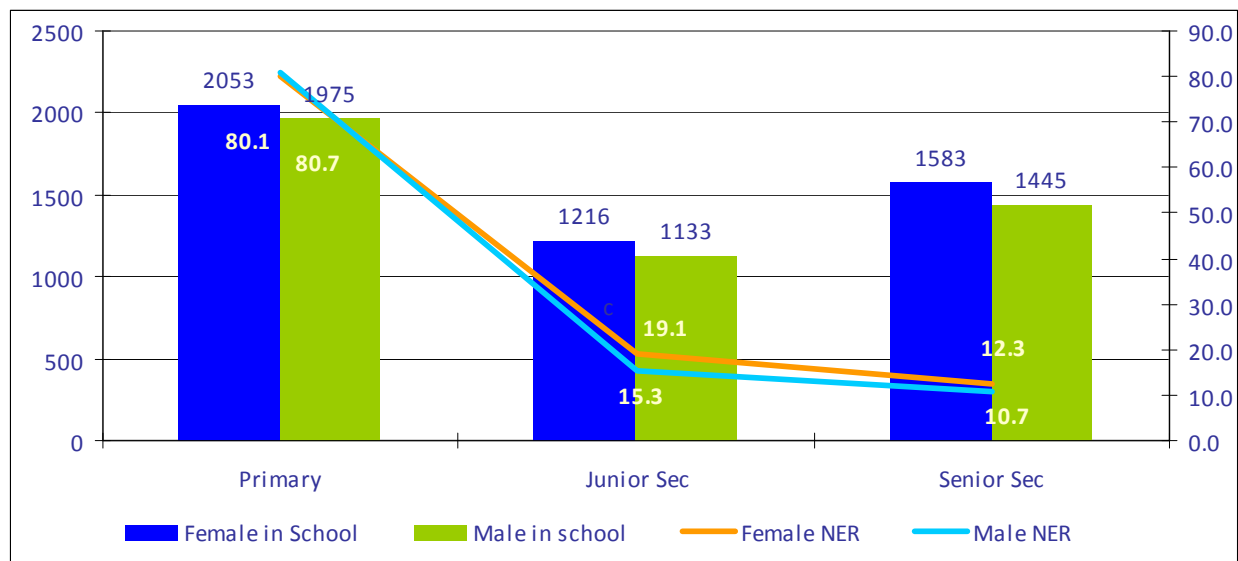
¹⁴ Net Enrollment Rate is calculated dividing the number of pupils attending each level of schooling by the number of people in the appropriate age group, or the age group that should be enrolled in that grade

When further comparing this by sex it can be observed that the proportions of males and females reported to be in school are similar: about 37% males and 34% females. Proportions are also similar for drop outs: 57% males and 55% females. However there is a slight difference in those reporting never to have gone to school. Specifically, 6.3 % of registered male individuals are reported as never having attended school while 10.7% of females are found in this same category.

Chart 3.1: Comparison (percentage) of enrollment by sex by IDP Individuals



Graph 3.2: Net Enrollment Rate (NER) in males and females and absolute attendance (IDP individuals).



4. Occupation

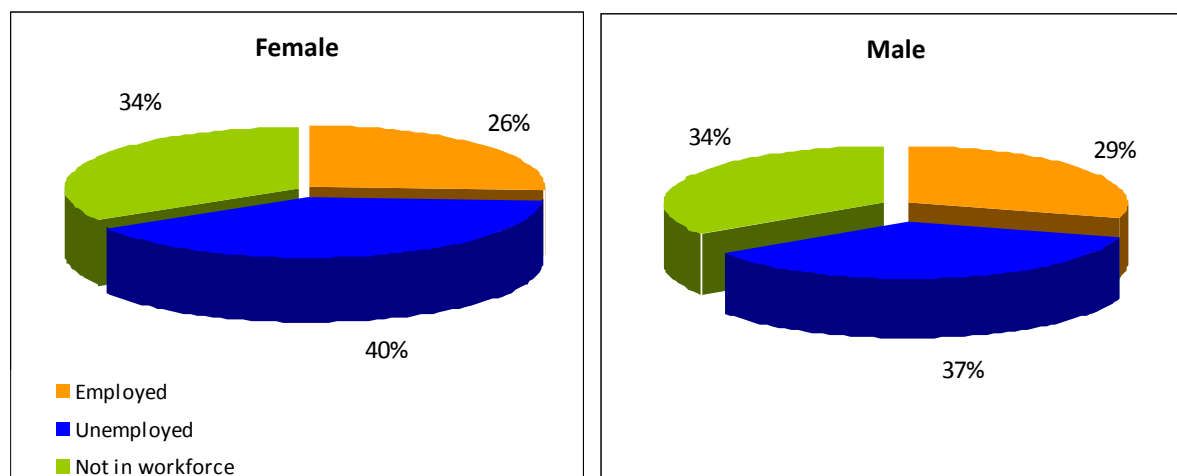
58% of the registered population, of working age, is reported as unemployed at the time of registration. Moreover, of the population that reported being employed 43% reports being engaged in skilled labor while the remaining 57 % report doing unskilled work.

42% of the working age population in IDP sites report being employed.

In addition to this, a Net Dependency Ratio¹⁵ of 43.1 is observed. Taking these two indicators into account it can be said that every working person supports 2.4 non-active member of the household.

More specifically, when taking sex and age into consideration it is observed that the proportions are similar in between the two sexes. With 26% of females reporting being employed compared to 29% of males.

Chart 4.1: Comparison (percentage) of employment rate by sex by IDP Individuals



5. National Documents

¹⁵ Dependency ratio = sum of the number of individuals between the ages of 0 – 14 and those above the age of 65 divided by the number of individual between the age of 15 – 64.

74% of heads of households registered in Phase 2 this period report having national documentation. Most report having NIF or CIN cards (87% of population with documents). This figure is higher than that reported in Phase 1 where only 65% of heads of households reported having documentation.

Phase 2 data suggests that younger heads of households are less likely to have documentation compared to their older counterparts: 34% of the heads of households that did not have documentation were below the age of 30.

Majority of Heads of Households in IDP sites have some form of National Identification



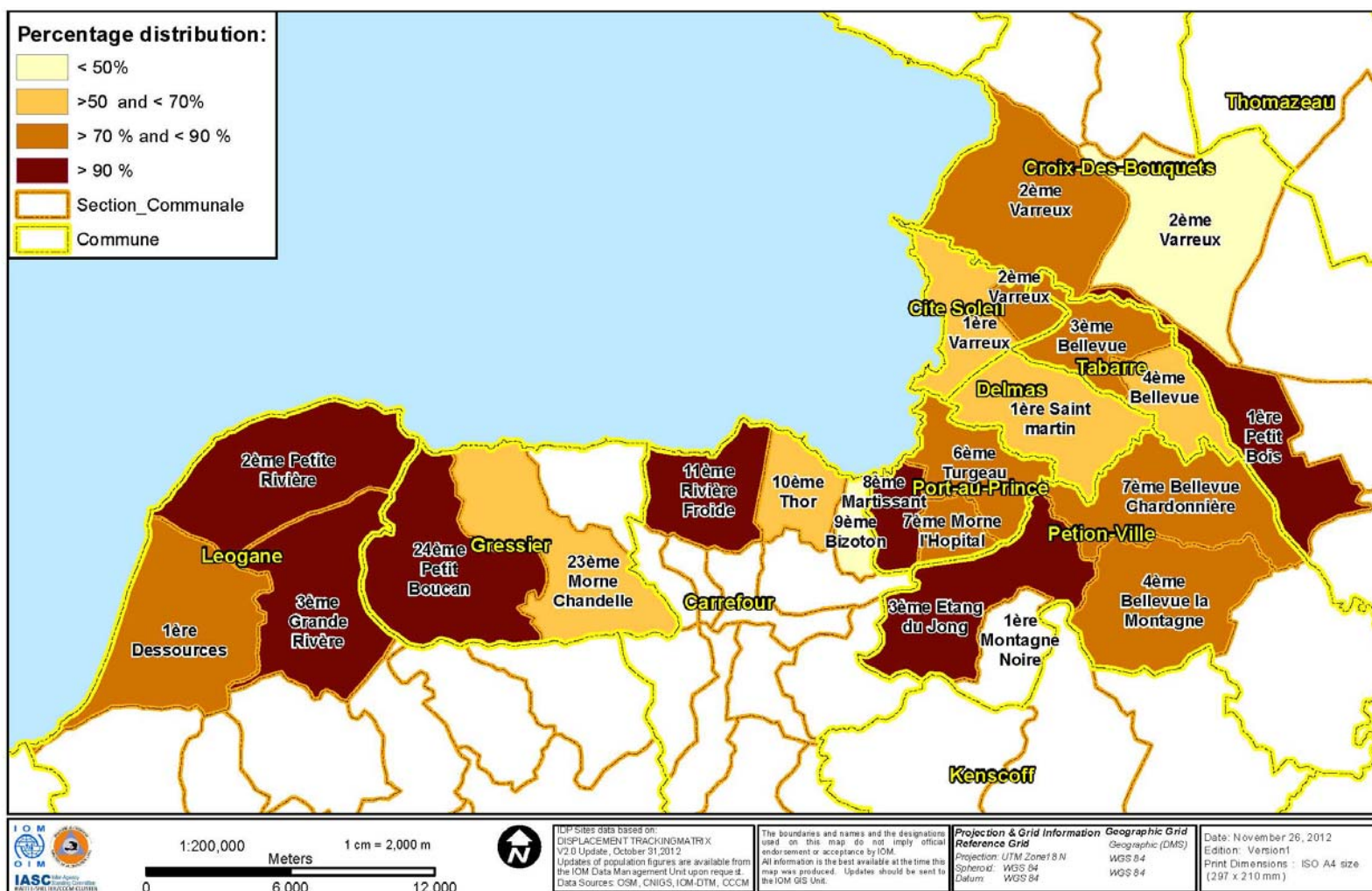
Table 5.1: Distribution (number and percentage) of IDPs Head of household by type of document owned.

Type of Document	Males	Female	Total
CIN	4,037	4,966	9,003 (87.1%)
NIF	820	498	1,318 (12.7%)
Passport	13	6	19 (0.2%)
Total	4,870 (47.1%)	5,470 (52.9%)	10,340

6. Displacement and place of origin (before the earthquake)

On average, majority (84%) of the IDP individuals in Phase 2 Registration (2012) report living in IDP sites that are within the same commune as the houses they lived in before the earthquake. This is similar to the findings in Phase 1 Registration where nearly 85% reported living in the same commune before the earthquake.

Map 6.1: Percentage of IDPs reporting moving into a site within the same communal section as their house before the earthquake



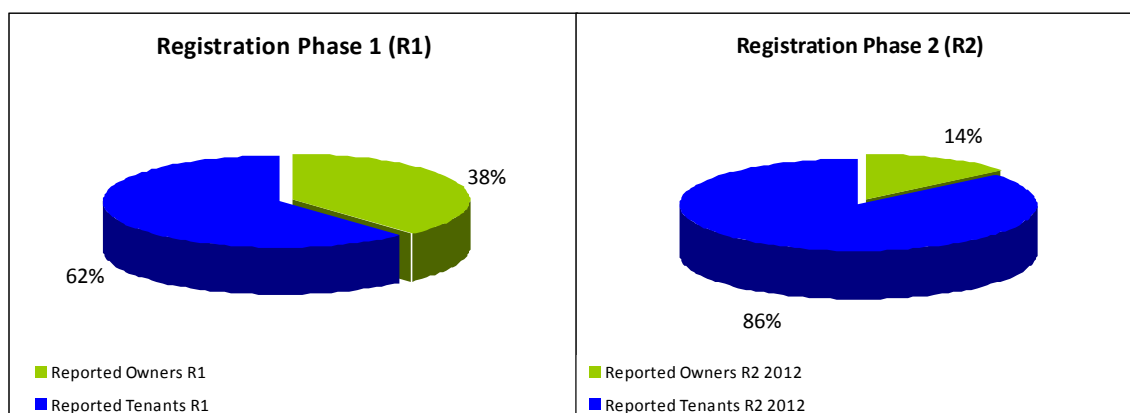
7. Ownership Status

About 86% of IDP households in Phase 2 Registration (2012) report being tenants while the 14 % report being owners.

When comparing this to Phase 1 data, it is observed that the proportion of reported tenants in IDP sites has increased while more households that reported being owners in Phase 1 have left the sites: in Phase 1 a total of about 62% reported being tenants while more than 38% reported being owners.

There are more tenants remaining in IDP sites compared to 2010.

Chart 7.1 Comparison of Reported Ownership Status between Registration Phase 1 and 2



8. Summary

Overall there has been a considerable change in the make up of the population that continues to reside in camps and camp like settlements in Haiti. Specifically, the average household size has reduced from 4.3 in 2010 to 3.4 in 2012. There is also a larger group of individuals within the ages of 20 to 39 compared to 2010, of this age group there has been a greater increase in males compared to females. Though further analysis is needed, these observations support two hypothesis common among humanitarian partners that 1) households could be splitting leaving their more able members in the IDP sites; or 2) households with more children and elderly people have left the IDP sites.

Nonetheless, of the population remaining in sites in 2012, 84 % were also found in the IDP sites in 2010. Though further analysis is also needed, this finding supports the hypothesis that the vast majority of the population has been in the IDP sites since 2010.

It is also interesting to note that there is a greater proportion of single headed households remaining in the IDP sites compared to Phase 1: 48% of IDP households registered in the first phase reported being single headed (32% single female headed and 16% single male headed) compared to the 57% reported in Phase 2 Registration in 2012 (34 % female headed and 23% male headed). However, the number of individuals that were reported as being part of a couple headed household is still greater than that

belonging to single headed households: about 51% of individuals are reported to be part of couple headed households.

When looking into the sector of Education, it is observed that there is a higher rate of enrollment in primary school for individuals residing in IDP sites compared to the neighborhood: with a Primary Net Enrollment Rate (NER) of about 77% in the neighborhood compared to 80% found in Phase 2 Registration. Moreover, there are no large differences between NER of males and Females in IDP sites: 39.3 % for males and 38.9 % for females.

58% of the registered population (of working age) was reported as unemployed at the time of registration. Moreover, of the population that reported being employed 43% reports being engaged in skilled labor while the remaining 57 % report doing unskilled work. Taking this into account, while also considering the observed Net Dependency Ratio of 43.1; it can be said that every working person supports at least one non-active member of the household.

When comparing ownership status between Phase 1 and Phase 2 it can be observed that there are more tenants remaining in IDP sites compared to owners. Specifically, about 86% of IDP households in Phase 2 Registration (2012) report being tenants compared to the 62% in Phase 1.

As previously mentioned, this report reflects the highlights of the analysis carried out by the IOM Data Management Unit in November 2012. A detailed, more comprehensive version is also available for partners with interest in more in depth information.

IOM recognizes that there are external variables that affect data gathering and analysis that should be taken into consideration when interpreting the results of this report. It is important that the reader understand the tools and methodology of IOM IDP registration in the context of post-earthquake Haiti in order to better understand the results presented here.

9. Annexes

Annex 1: IDP Registration Form

Annex 2: Missing Values Document

Annex 3: List of Camps included for this Analysis

For more information please visit: www.iomhaitidataportal.info

or

email us at: dtmhaiti@iom.int