

BROOKINGS

QUALITY. INDEPENDENCE. IMPACT.

# **Adolescent Girls' Access to Secondary Education in Nuwakot District of Nepal**

---

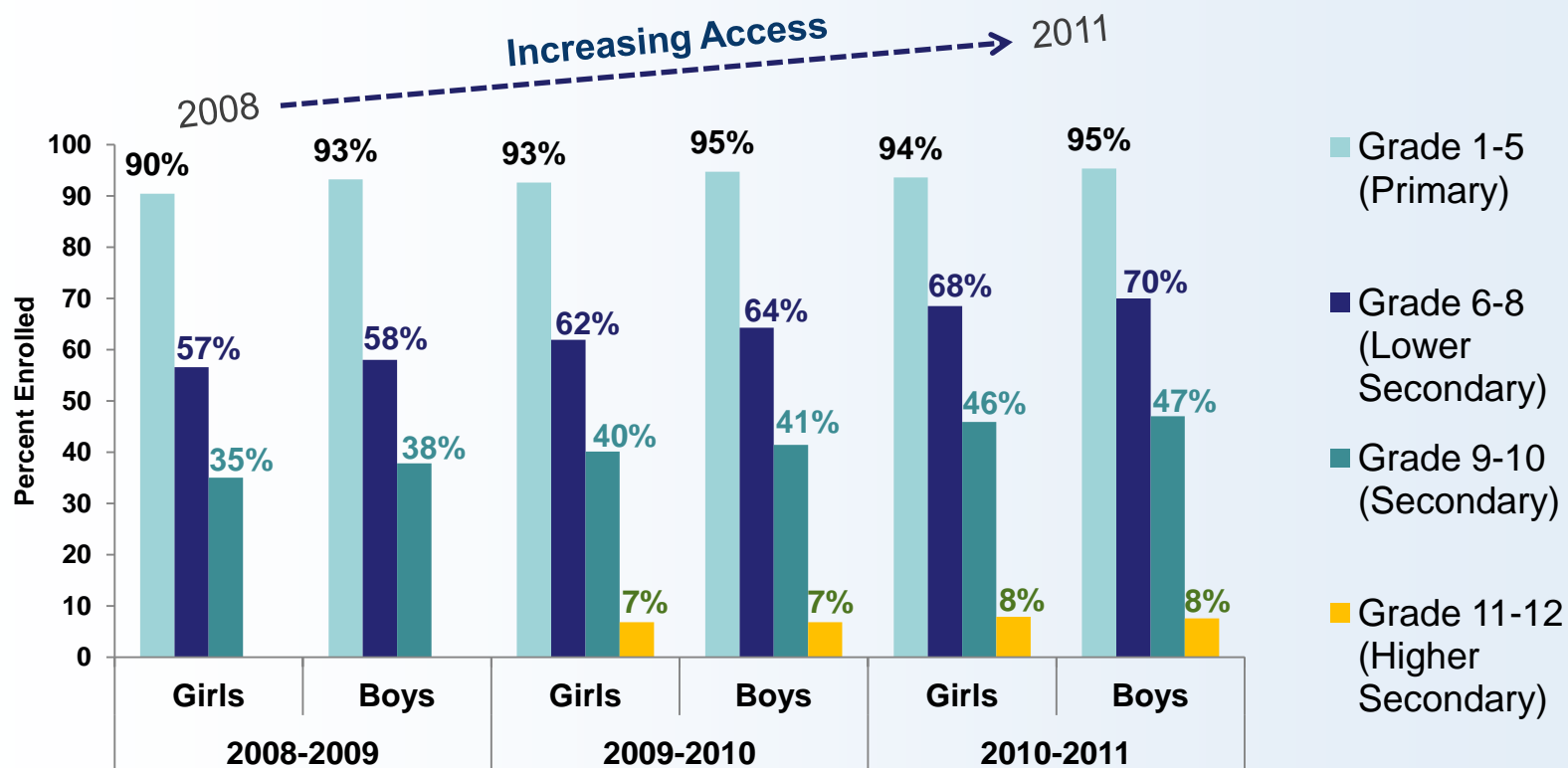
Babita Rana, Guest Scholar  
Center for Universal Education | Brookings Institution  
29 June, 2012

# Overview

1. **National Context: Situation of Adolescent Girls' Education in Nepal and Nuwakot District**
2. **Underlying Problems: Challenges Faced by Adolescent Girls' in Nuwakot District**
3. **Potential Solutions: Pilot Project**



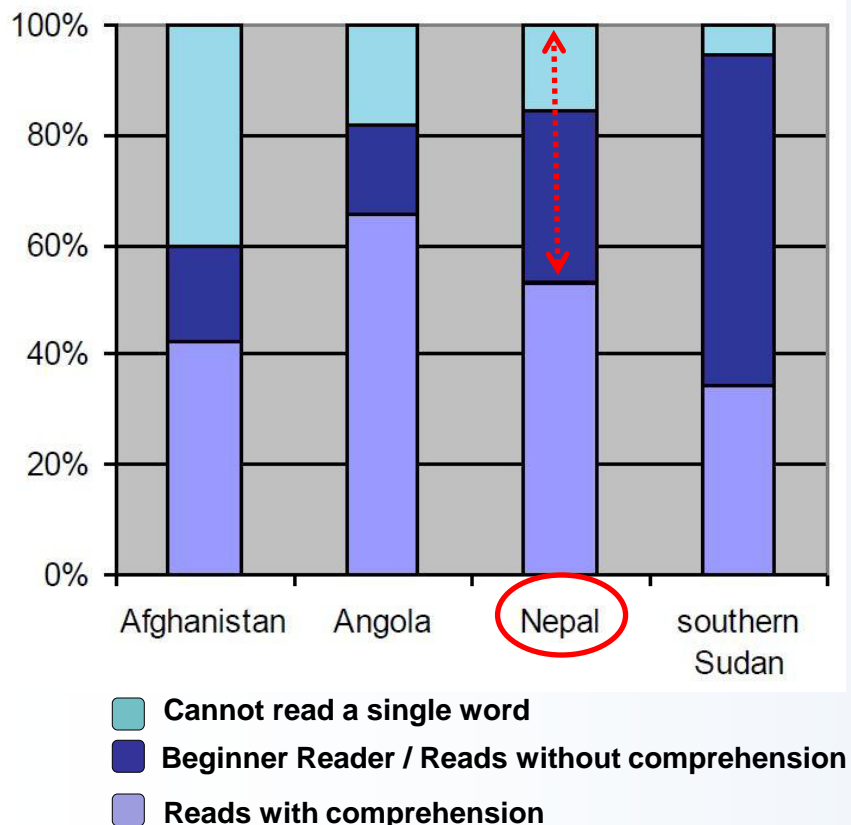
# Improved Access in Primary



Source:  
MOE 2008/9, 2009/10, 2010/11

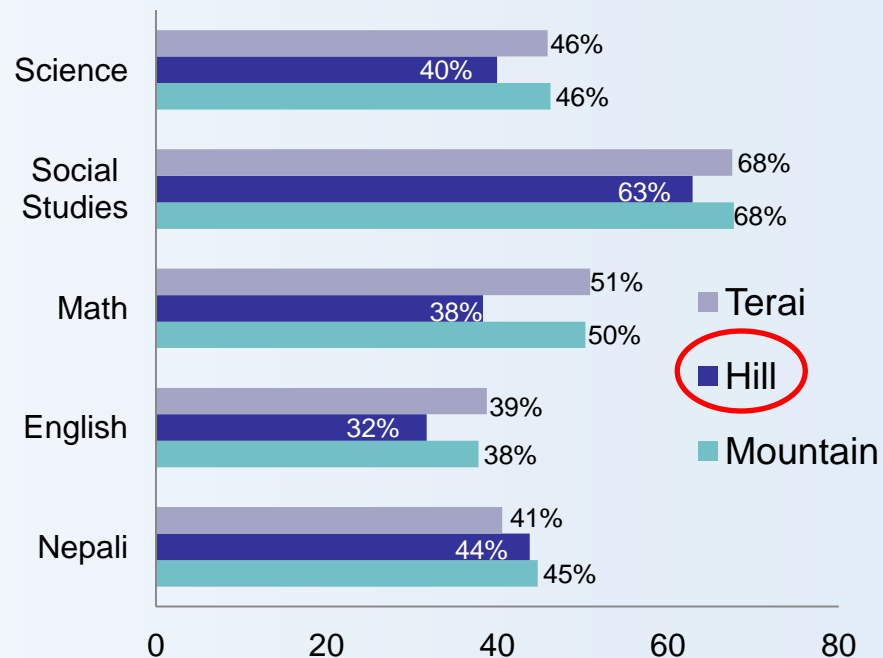
# Low Learning Levels

National Reading Assessment of Children in Grade 2



Source: Save the Children, 2010

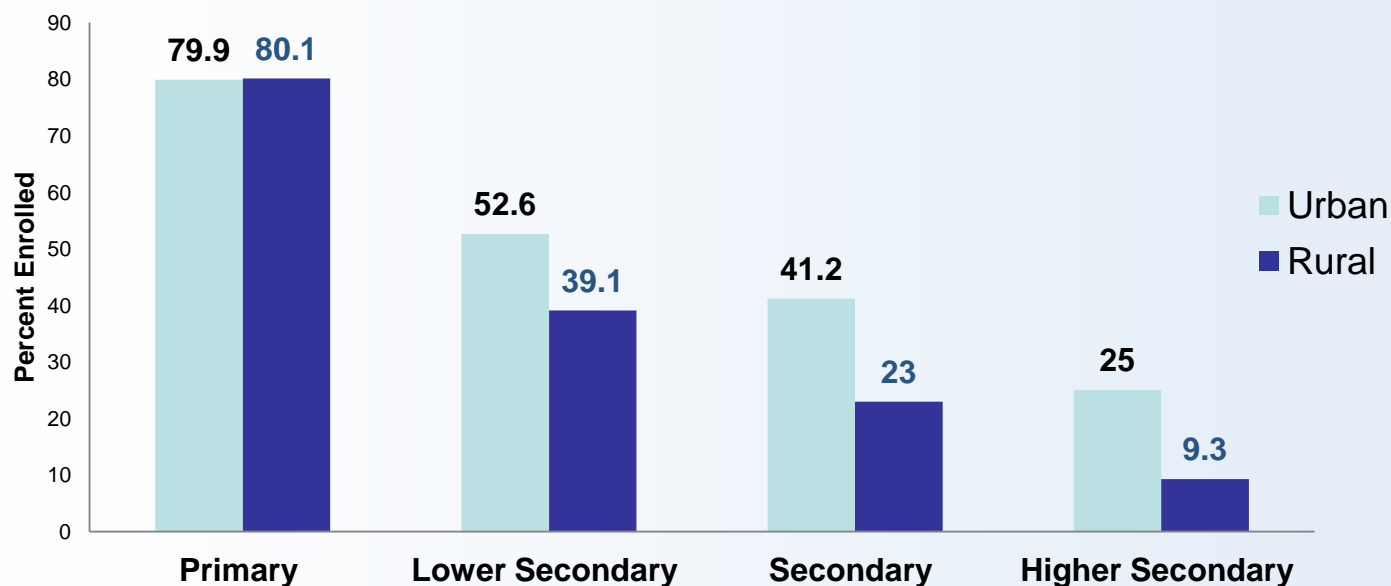
National Assessment of Nepalese Children in Grade 5 Based on Ecological Belt



Source: MOE, 2010/2011

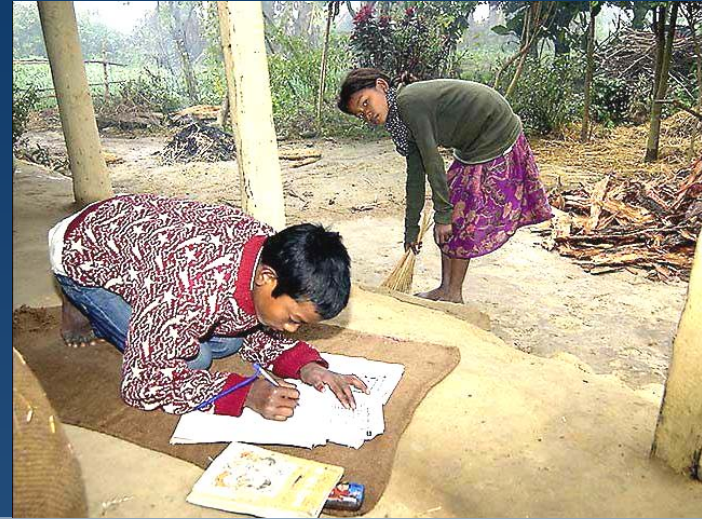
# Large Inequalities in Girls' Education (Urban vs. Rural)

## Enrollment of Girls in Primary and Secondary Education



BROOKINGS

QUALITY. INDEPENDENCE. IMPACT.



# Nuwakot District

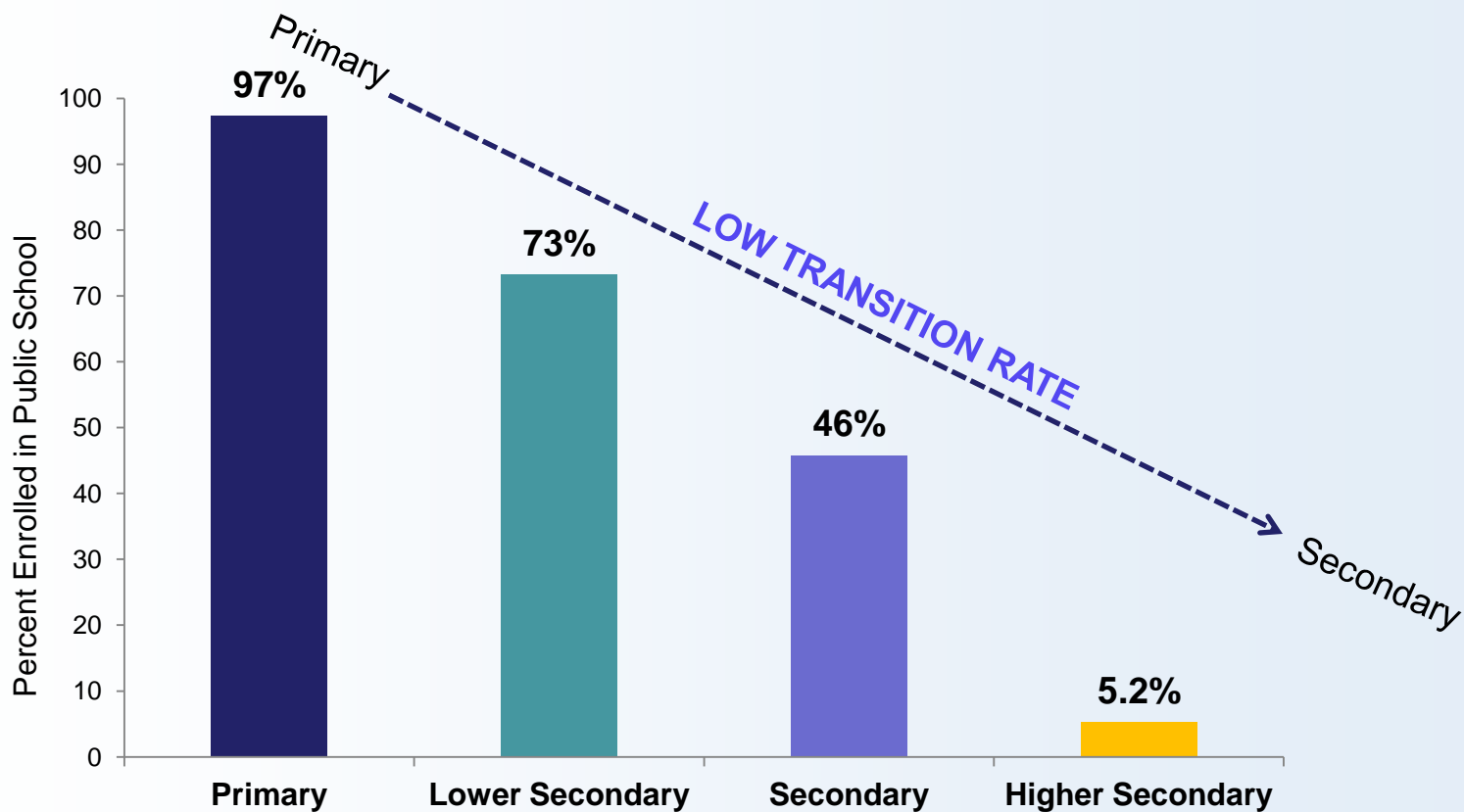


**Adolescent Girls' Population in Nuwakot District**

<b>10-14 years</b>	<b>20,202</b>
<b>15-19 years</b>	<b>16,285</b>
<b>Total</b>	<b>36,487</b>

**Total Population of Nuwakot: 278,761**

# Disparities in Enrollment



Source: MOE, 2010/2011



# Challenges for Adolescent Girls

**Early Marriage**  
50% married by 13-16 yrs old



**Early Pregnancy**

**Household Chores**  
50% more time spent on household chores by adolescent girls



**Poor Performance**

**Agricultural Work  
(Child Labour)**



**Missing School**

25% of 10-14 yr-old girls and 50% of 15-19 yr-old girls are involved in farming and paid work

# What is the Solution?

- ▶ Reducing cost of education
- ▶ Providing incentives for girls to attend school
- ▶ Countering early marriage and child labor



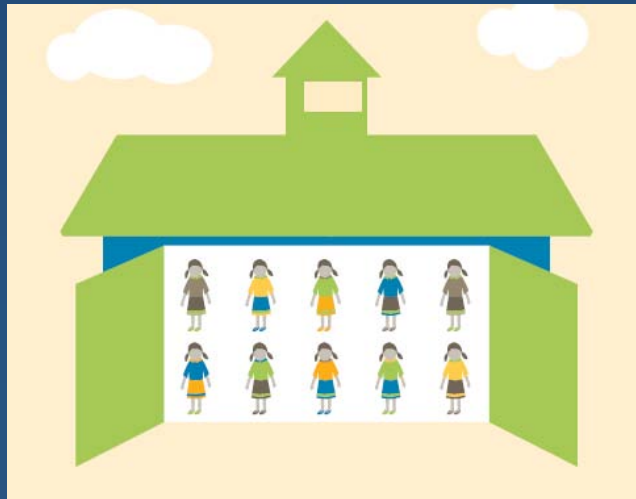
# AGE Africa's Model

**Advancing Girls' Education (AGE) Africa** is a Non-Profit Organization working in Malawi since 2005



Approaches	Achievements
<ul style="list-style-type: none"><li>▶ Comprehensive Scholarship</li><li>▶ Life Skills Mentoring</li><li>▶ Career Guidance Education</li></ul>	<ul style="list-style-type: none"><li>▶ 100% retention rate</li><li>▶ 70% pass rate (national average of 23%)</li><li>▶ Delayed marriage and pregnancy</li></ul>

# Intervention



Create a Learning Center  
in Nuwakot District

# Approaches and Implementation

**Comprehensive  
Scholarship**

**Tuition Fee &  
Additional Costs**

- 50 girls in Grade 6 at two public schools

**Building  
Life Skills**

**Peer Mentoring**

- 1 to 2 hour after school program for all students
- Annual 1 week All Scholars Retreat

**Career Guidance  
Education**

**Counseling**

- 6 part extra-curricular career workshop series for all scholars (Grade 11-12)

# Risks & Assumptions

- ▶ Early marriage;
- ▶ Unstable political situation;
- ▶ Family objection to higher studies;
- ▶ Family migration due to poverty or economic opportunities.

# Monitoring and Evaluation

## Progress Report

- Bi-monthly and annual reports on the progress of target students and schools.

## Feedback

- Interviews with students and teachers at intervention schools.

## MIS System Database

- Records of student and school performance during the program and after they graduate from secondary school.

# Outcomes

## Student Level

- ▶ Increase retention and graduation rate of girls in secondary school;
- ▶ Delay marriage and early pregnancy;
- ▶ Boost self-confidence;
- ▶ Increase economic opportunities.

## School Level

- ▶ Increase cooperation and knowledge sharing between schools in the district;
- ▶ Improve overall learning outcomes;
- ▶ Raise faculty skills level;
- ▶ Develop gender sensitive curriculum.

## Community Level

- ▶ Reduce poverty;
- ▶ Contribute to policy recommendations to improve the quality of secondary education.

BROOKINGS

QUALITY. INDEPENDENCE. IMPACT.



---

Thank You!