

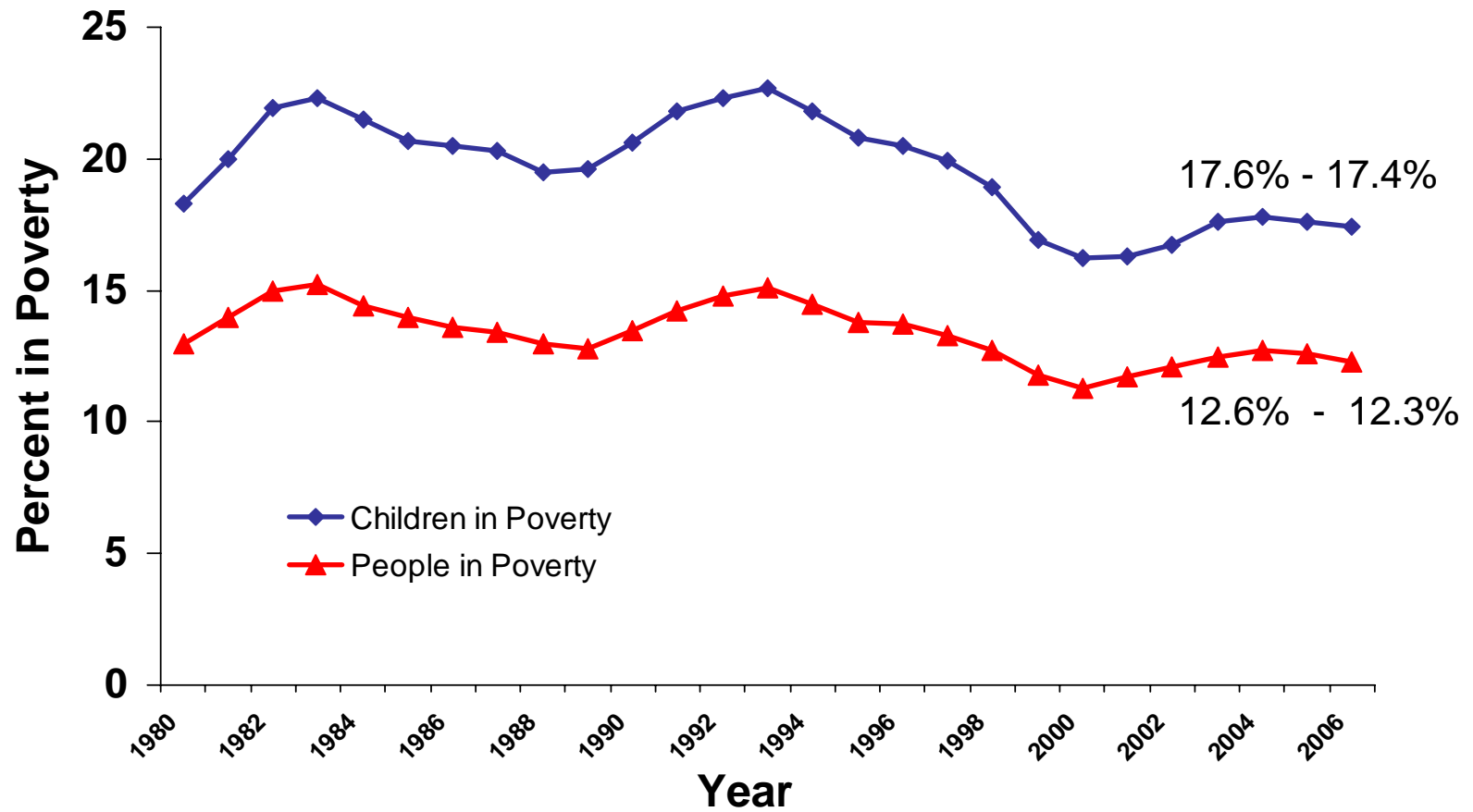
The Brookings Institution Center on Children and Families

**Poverty and Income in 2006:
A Look at the New Census Data and
What the Numbers Mean for Children and Families**

Tuesday, August 28, 2007

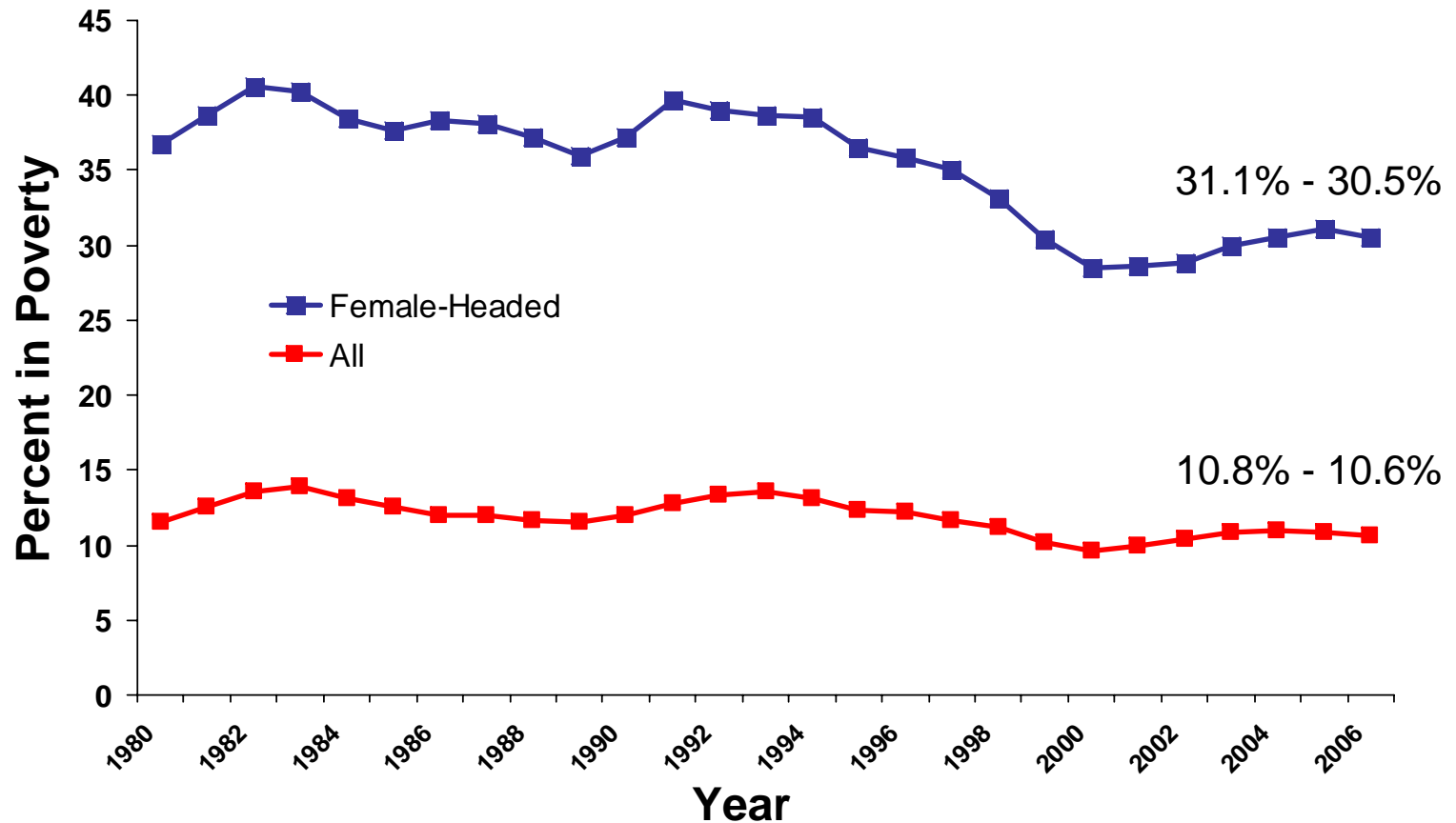


Children in Poverty and People in Poverty, 1980-2006



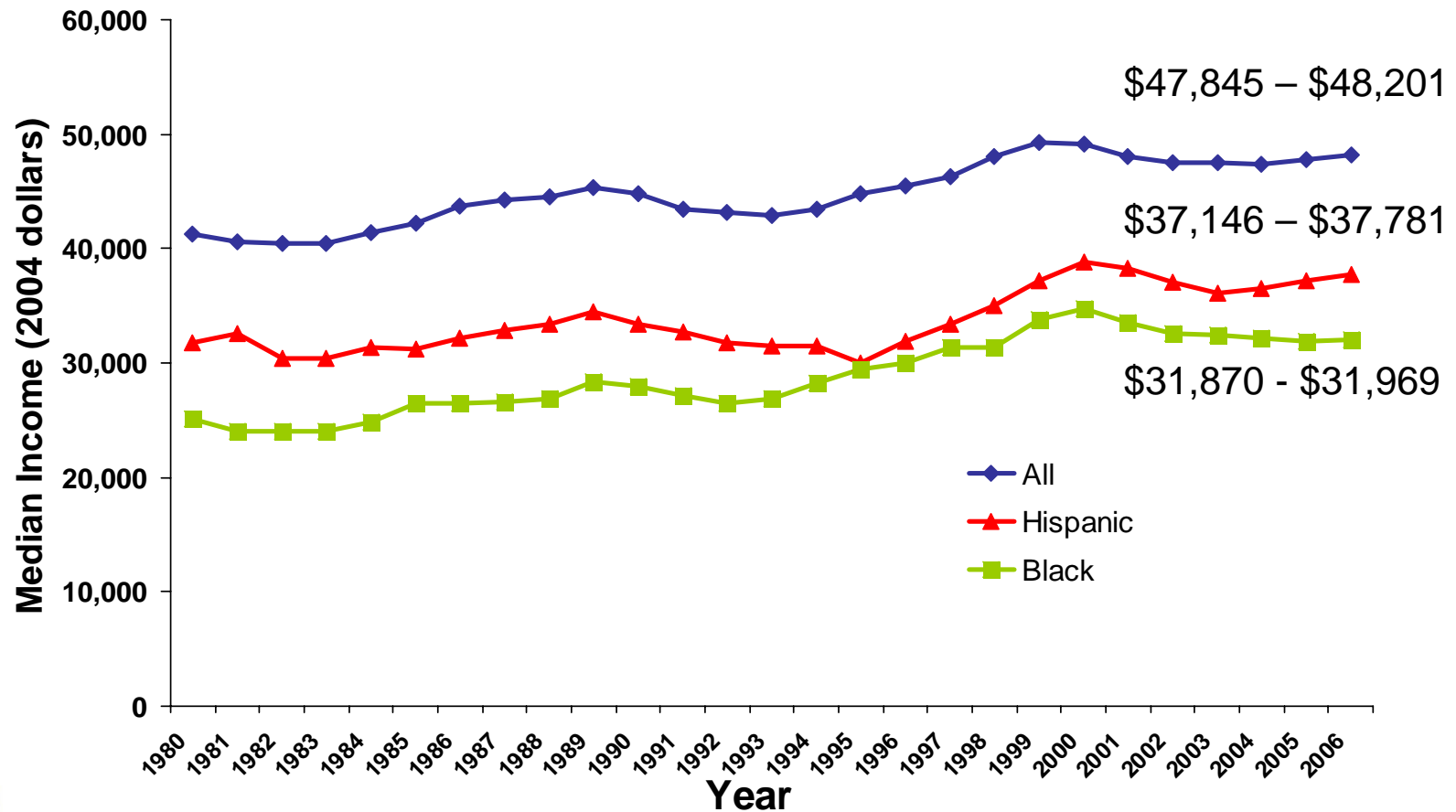
Source: U.S. Census Bureau

Poverty in Female-Headed Families and All Families, 1980-2006



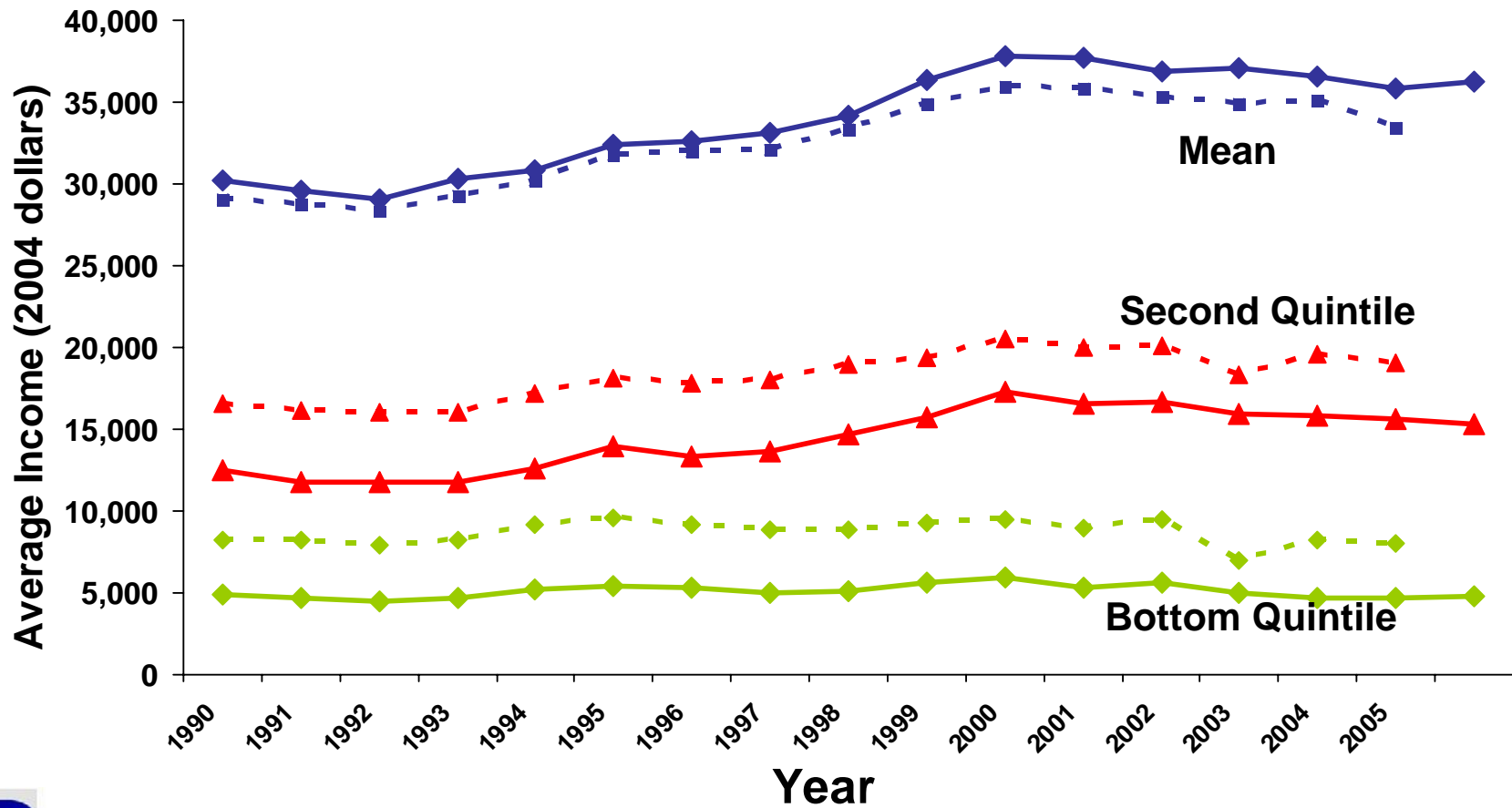
Source: U.S. Census Bureau

Median Income for All, Hispanic, and Black Households, 1980-2006



Source: U.S. Census Bureau

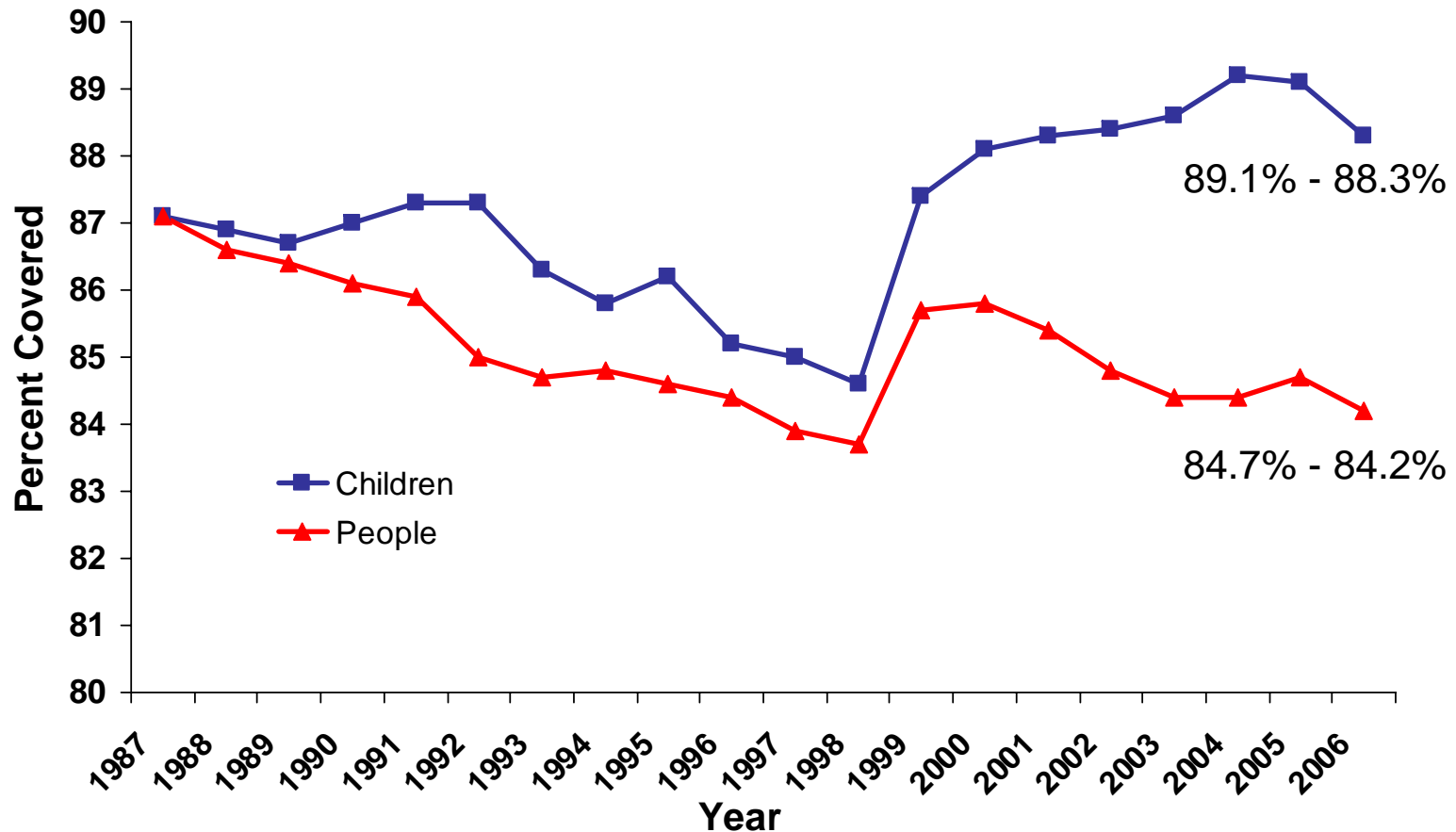
Income of Female Headed Families with Children, 1990-2006



Note: Solid line = pretax income; dotted line + post-tax plus transfer income

Source: Richard Bavier, based on U.S. Census Bureau March Current Population Survey

Percent of People and Children with Private or Government Health Insurance, 1987-2006



Source: U.S. Census Bureau