

Center on Children and Families

The Brookings Institution

Poverty and Income in 2005: A Look at the New Census Data and What the Numbers Mean for Children and Families

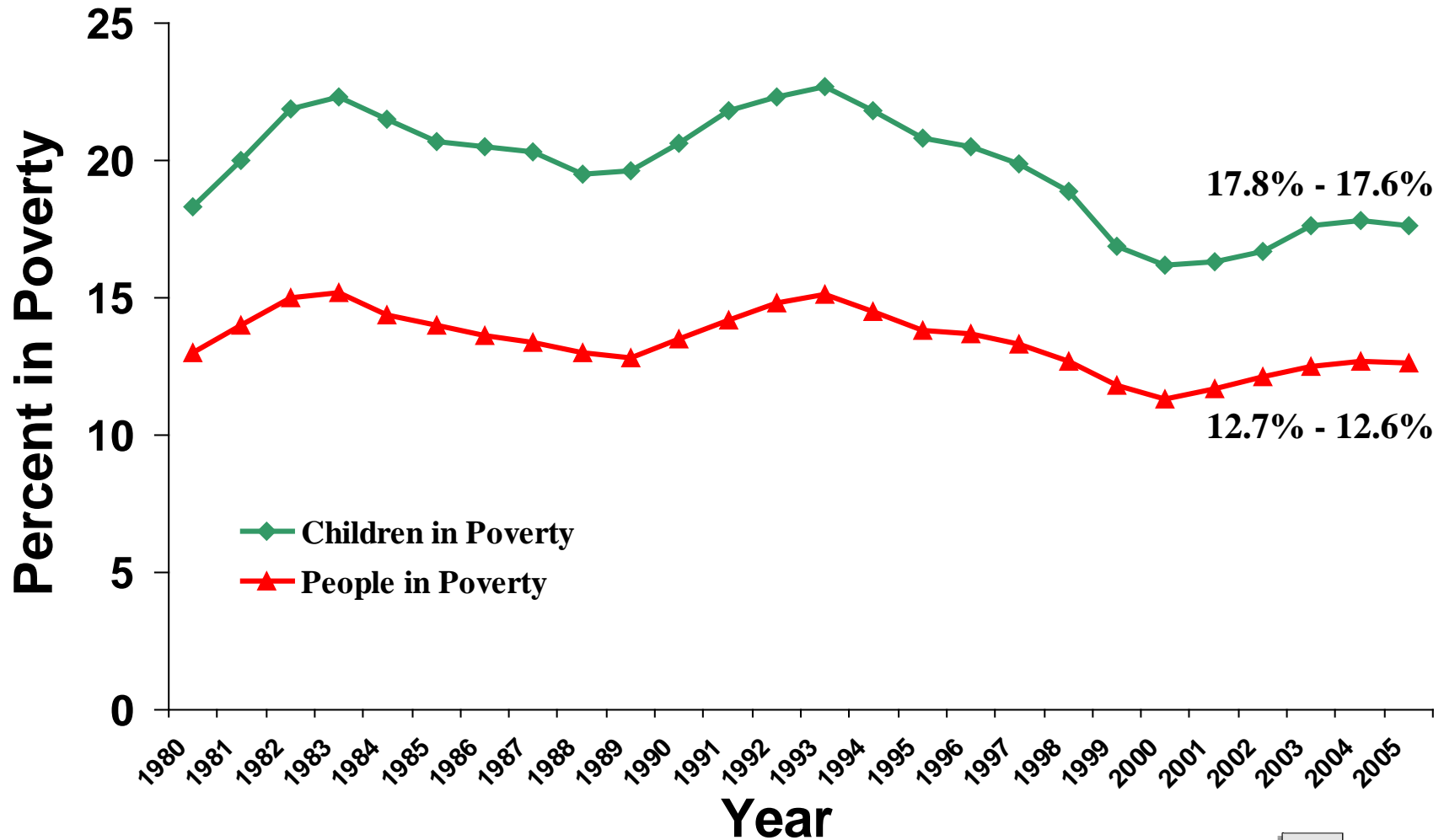
Tuesday, August 29, 2006



Prepared by The Brookings Center on Children and Families, August 2006



Children in Poverty and People in Poverty, 1980-2005

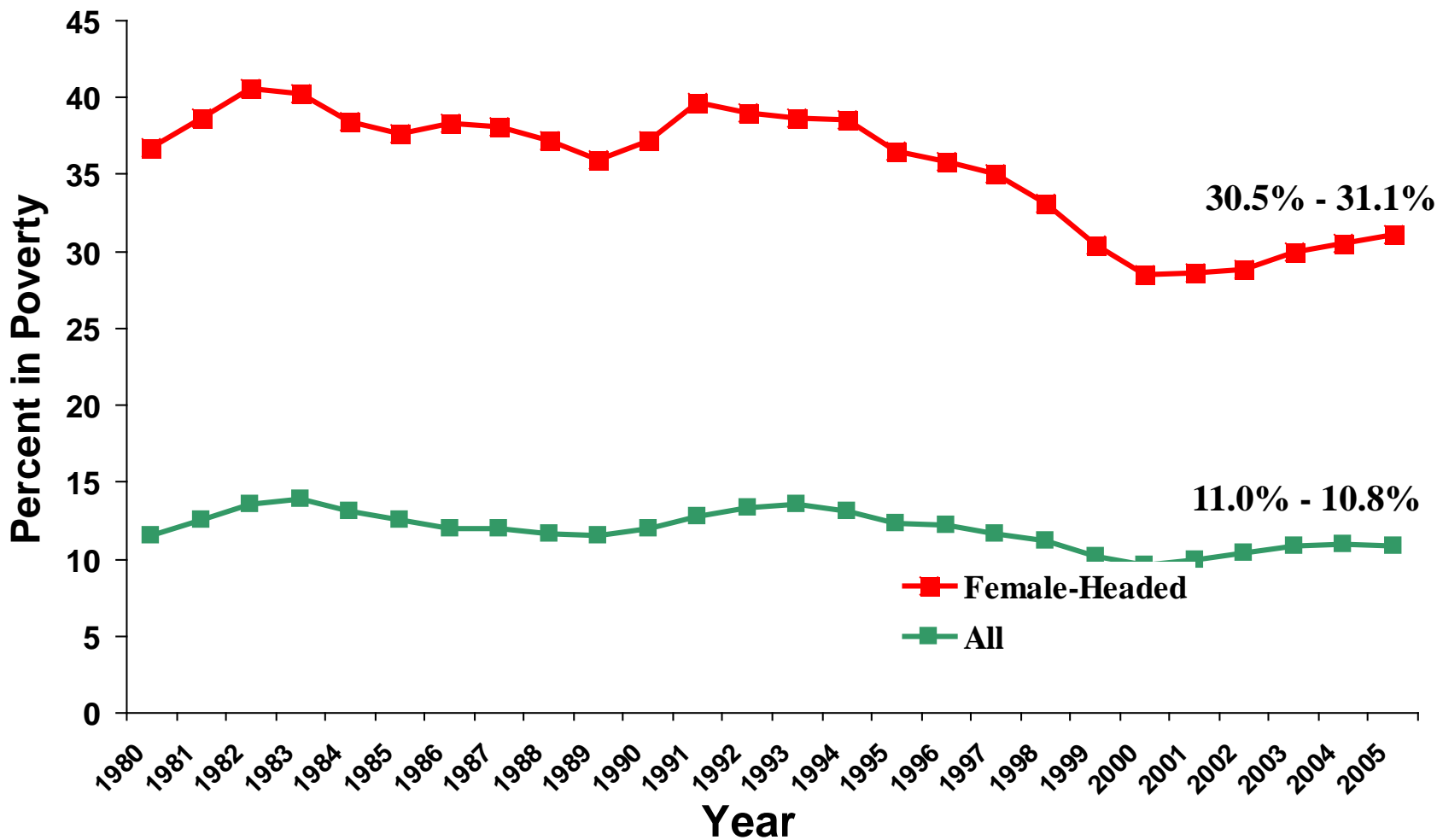


Prepared by The Brookings Center on Children and Families, August 2006

Source: U.S. Census Bureau



Poverty in Female-Headed Families and All Families, 1980-2005

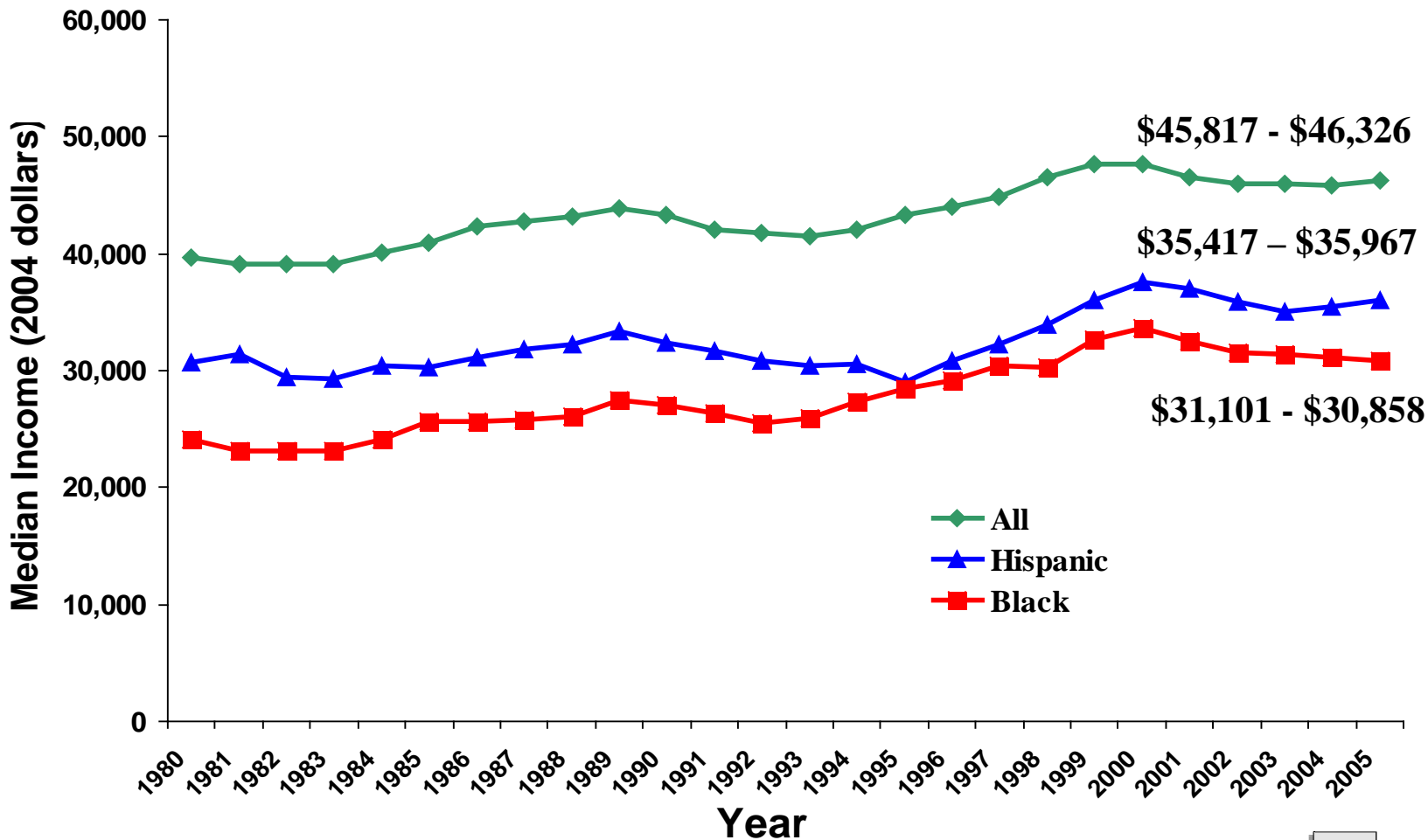


Prepared by The Brookings Center on Children and Families, August 2006

Source: U.S. Census Bureau



Median Income for All, Hispanic, and Black Households, 1980- 2005

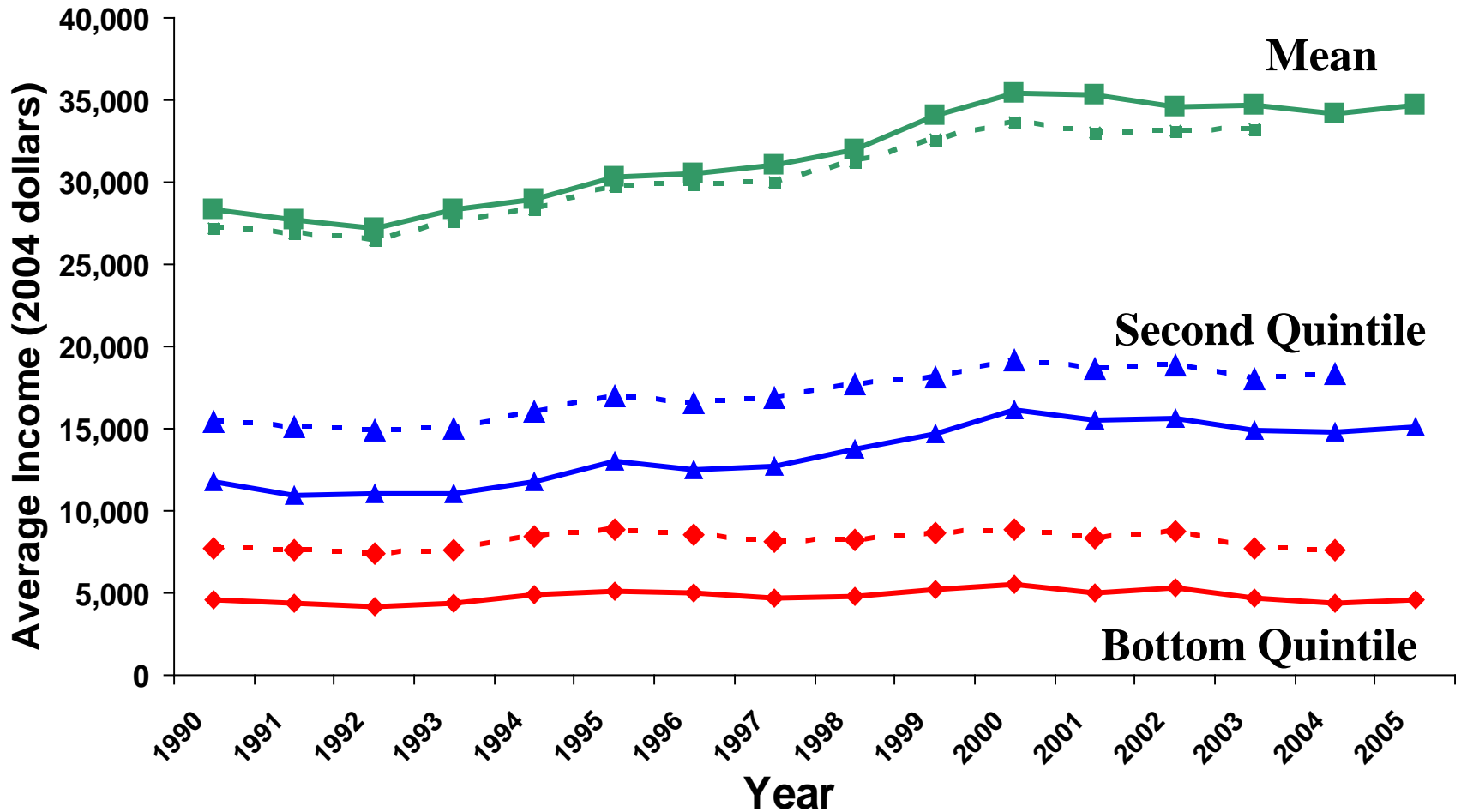


Prepared by The Brookings Center on Children and Families, August 2006

Source: U.S. Census Bureau



Income of Female Headed Families with Children, 1990-2005



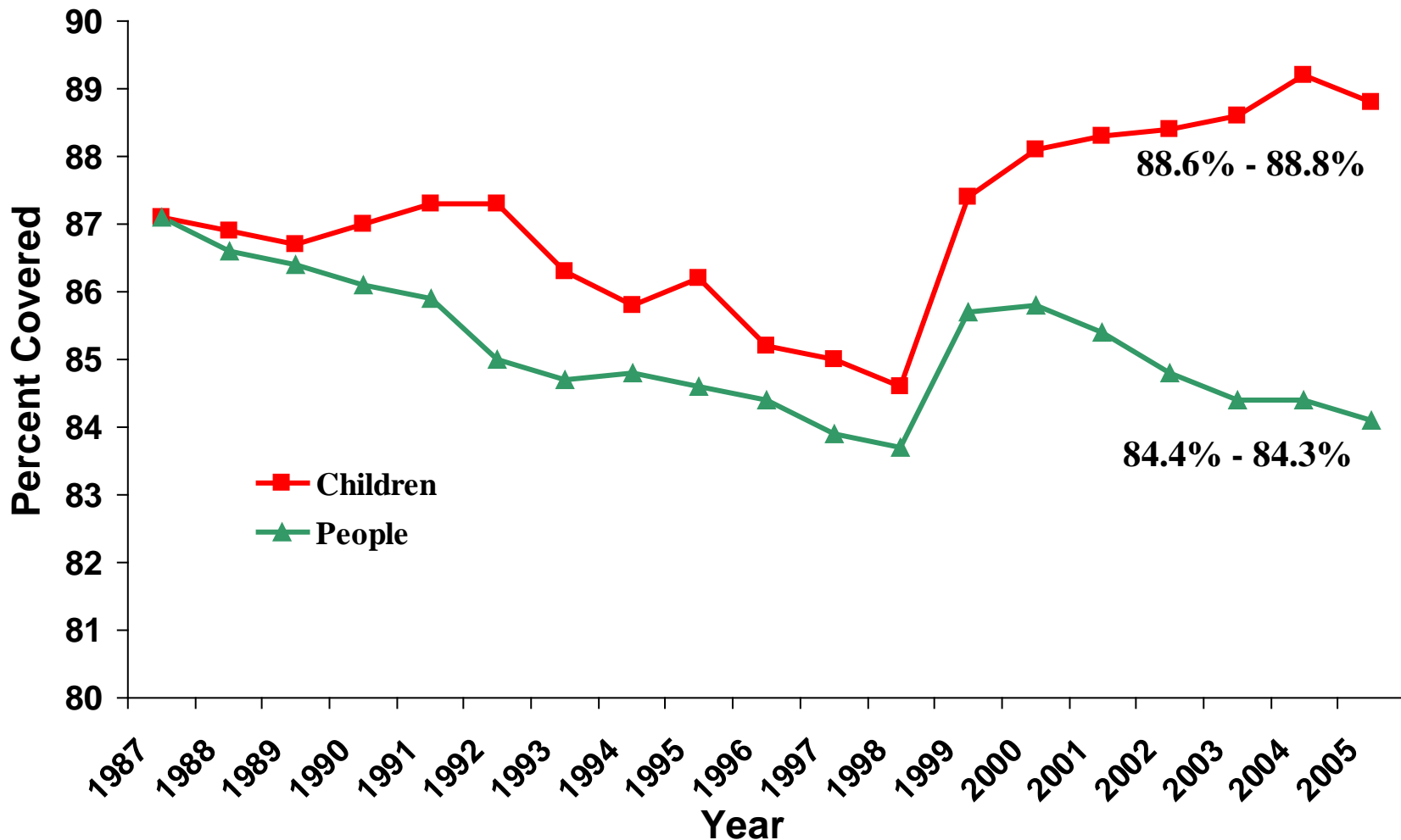
Note: Solid line = pretax income; dotted line + post-tax plus transfer income

Source: Richard Bavier, based on U.S. Census Bureau March Current Population Survey

Prepared by The Brookings Center on Children and Families, August 2006



Percent of People and Children with Private or Government Health Insurance



Prepared by The Brookings Center on Children and Families, August 2006

Source: U.S. Census Bureau

