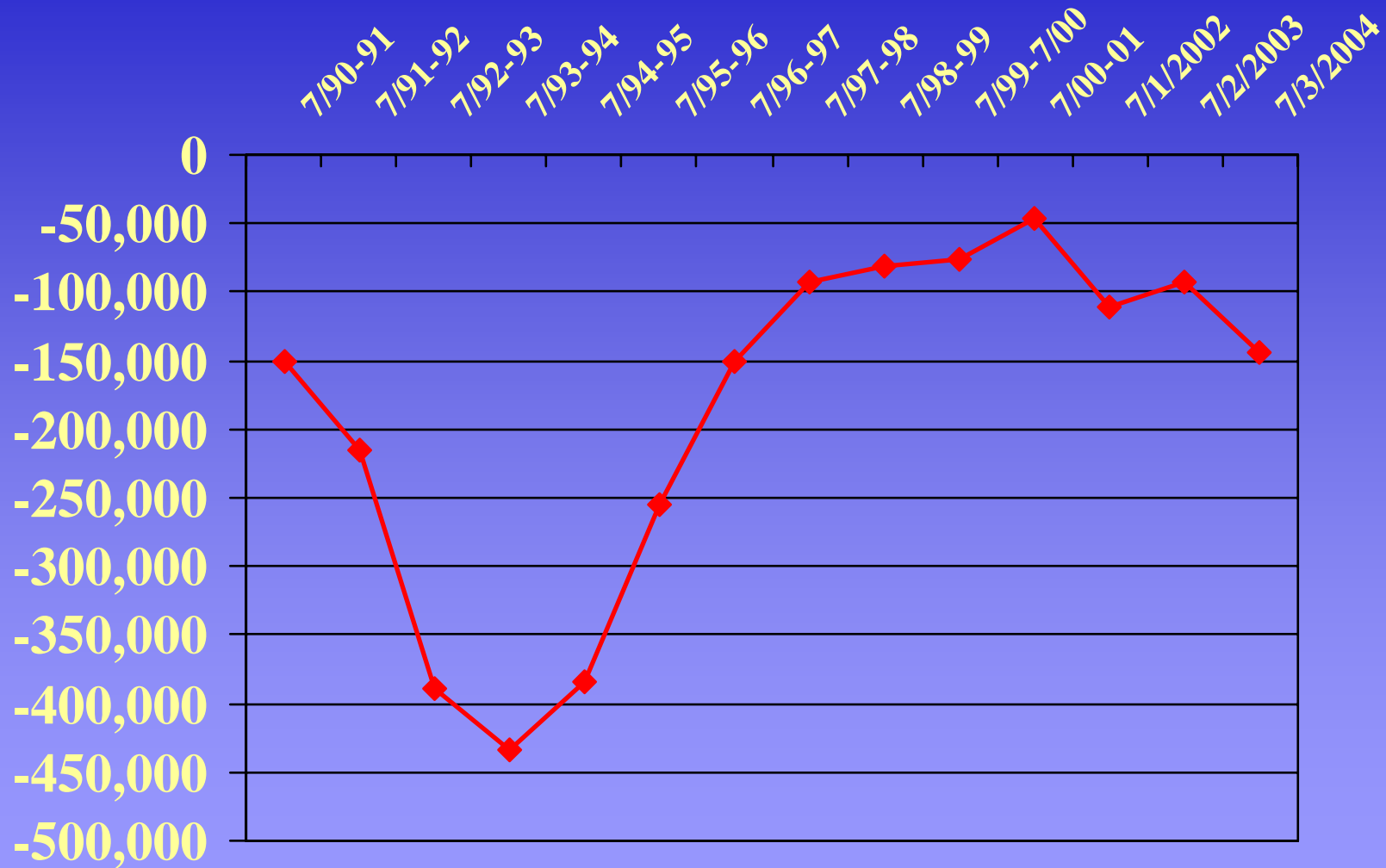
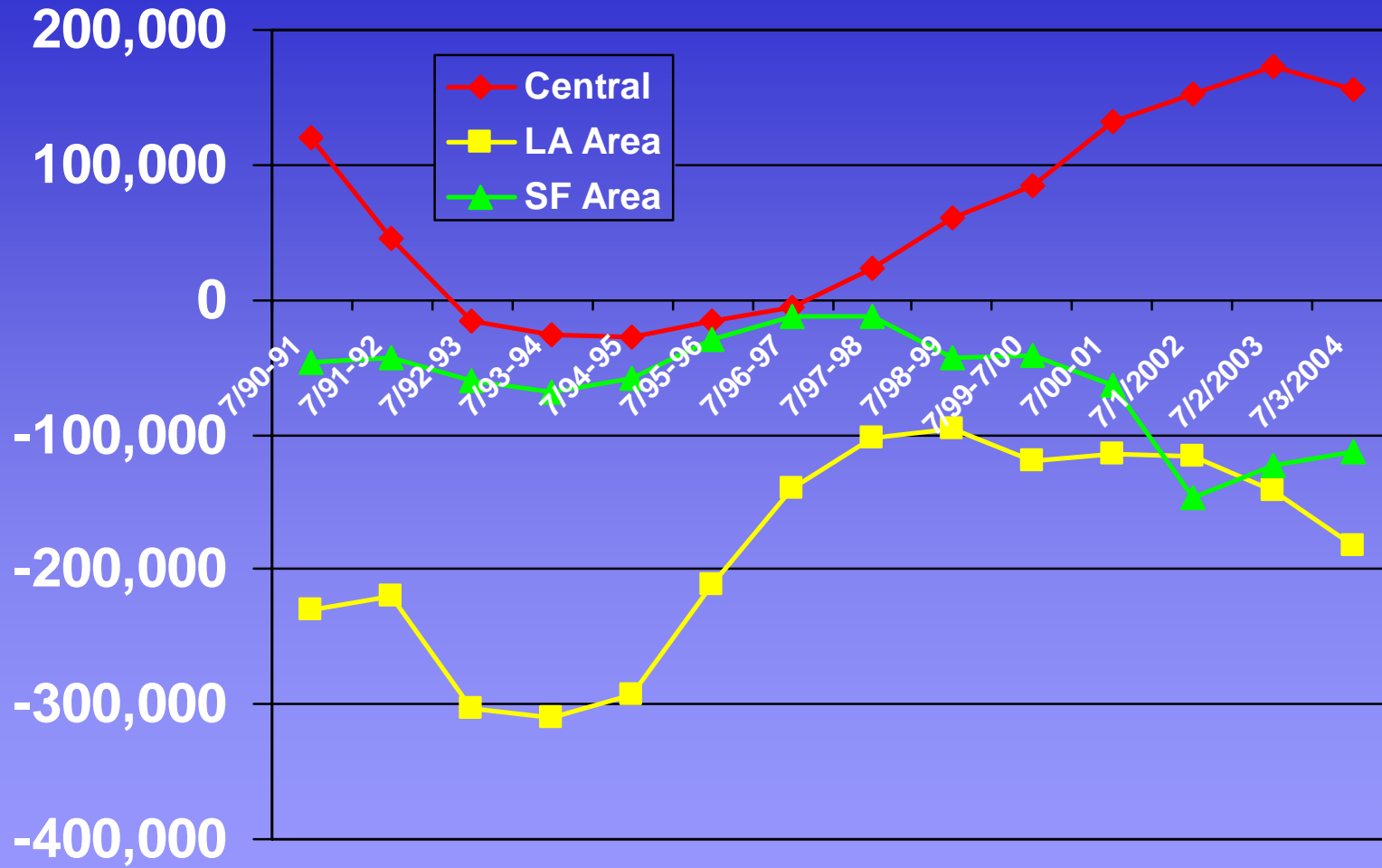


California Migration, 1990-2004

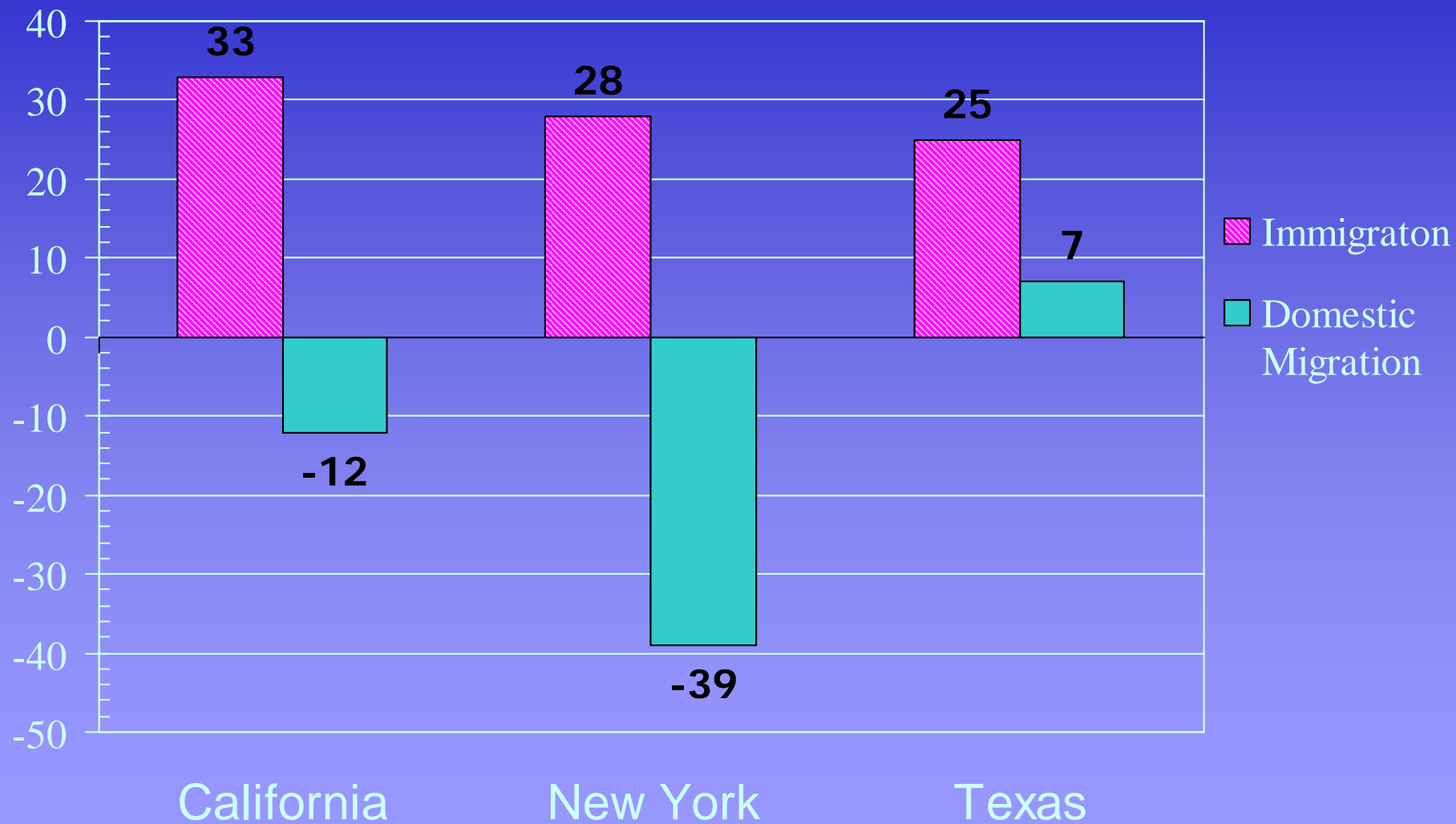


Migration for Three California Regions, 1990-2004

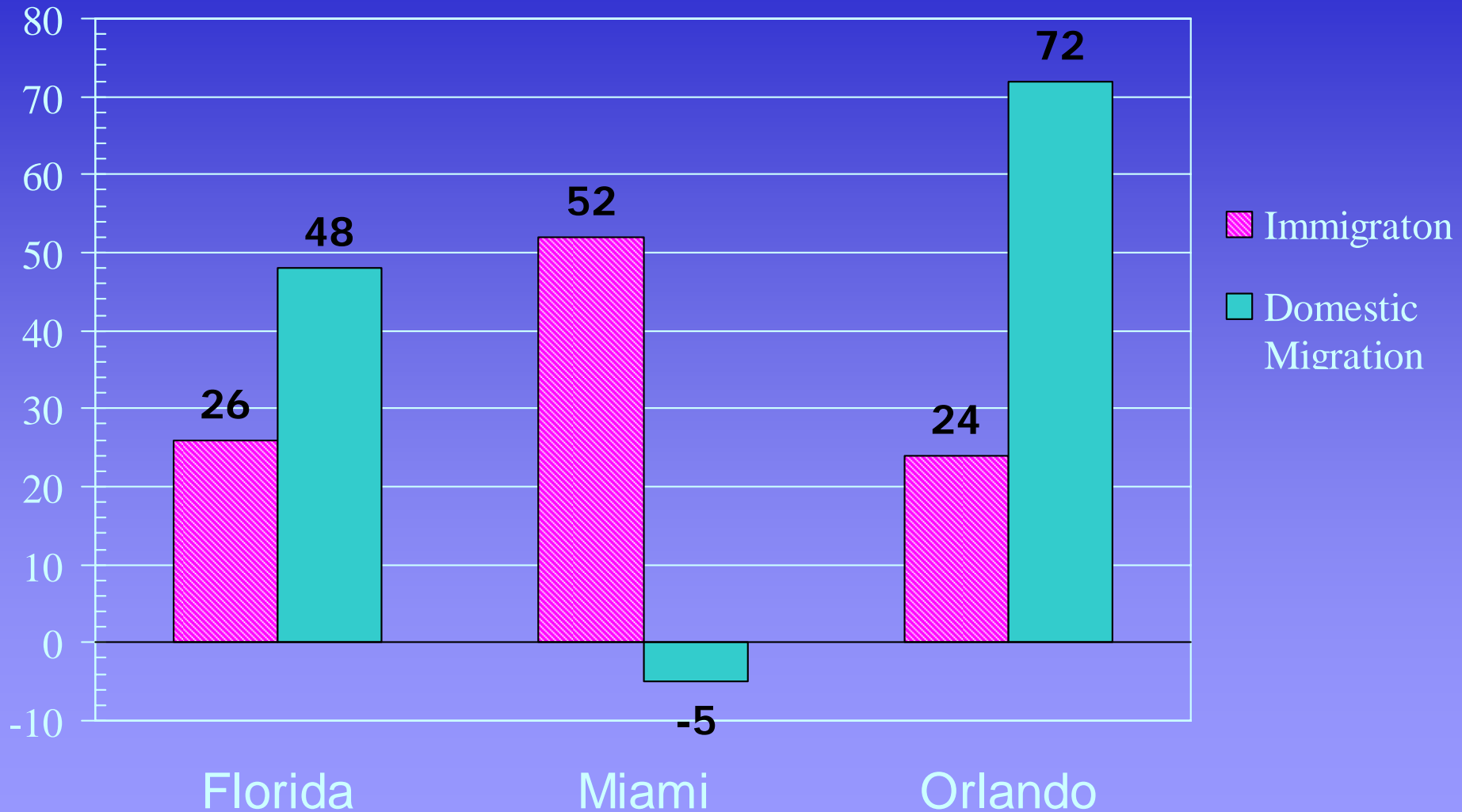


Source: William H. Frey

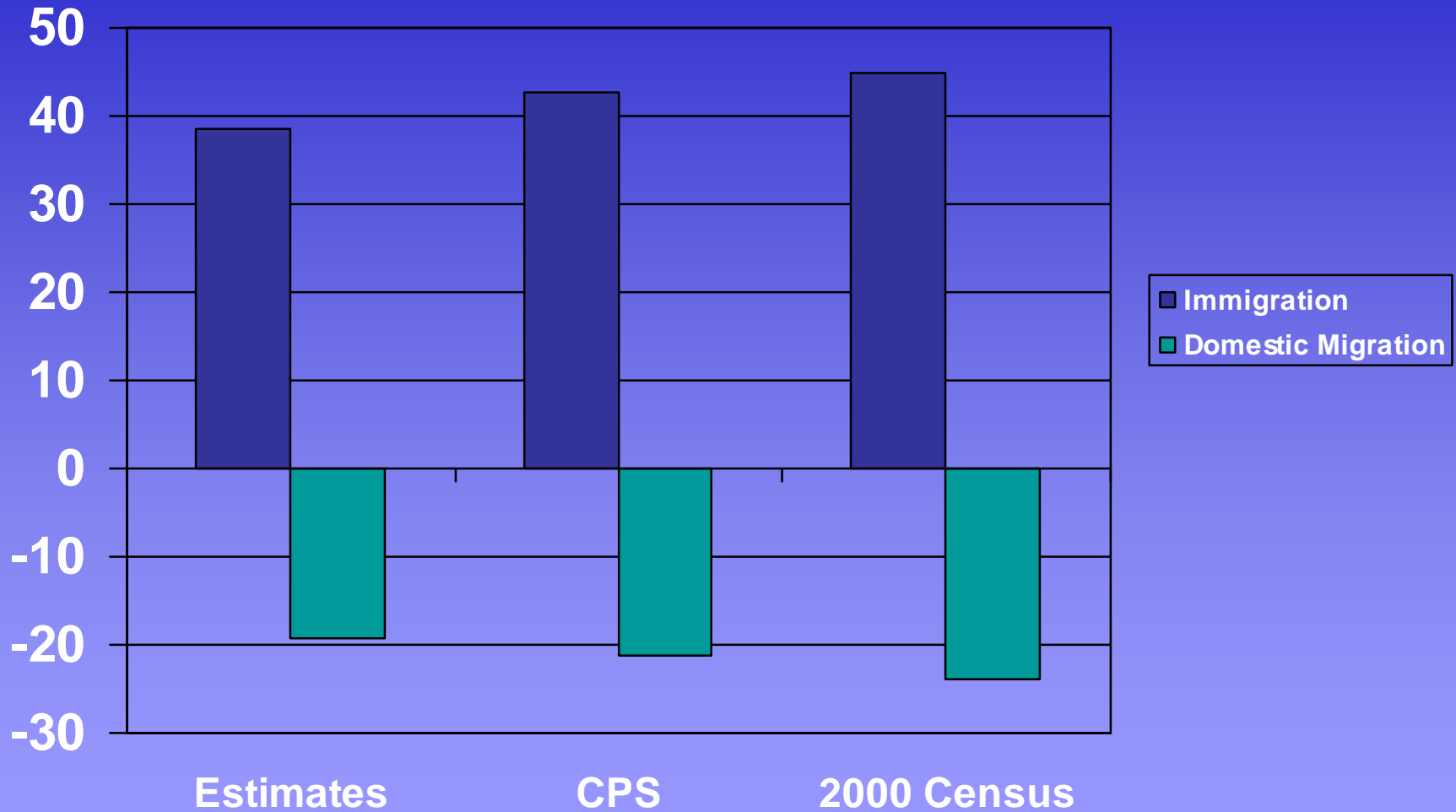
Immigrant States: 2000-04 Components



Florida: 2000-04 Components



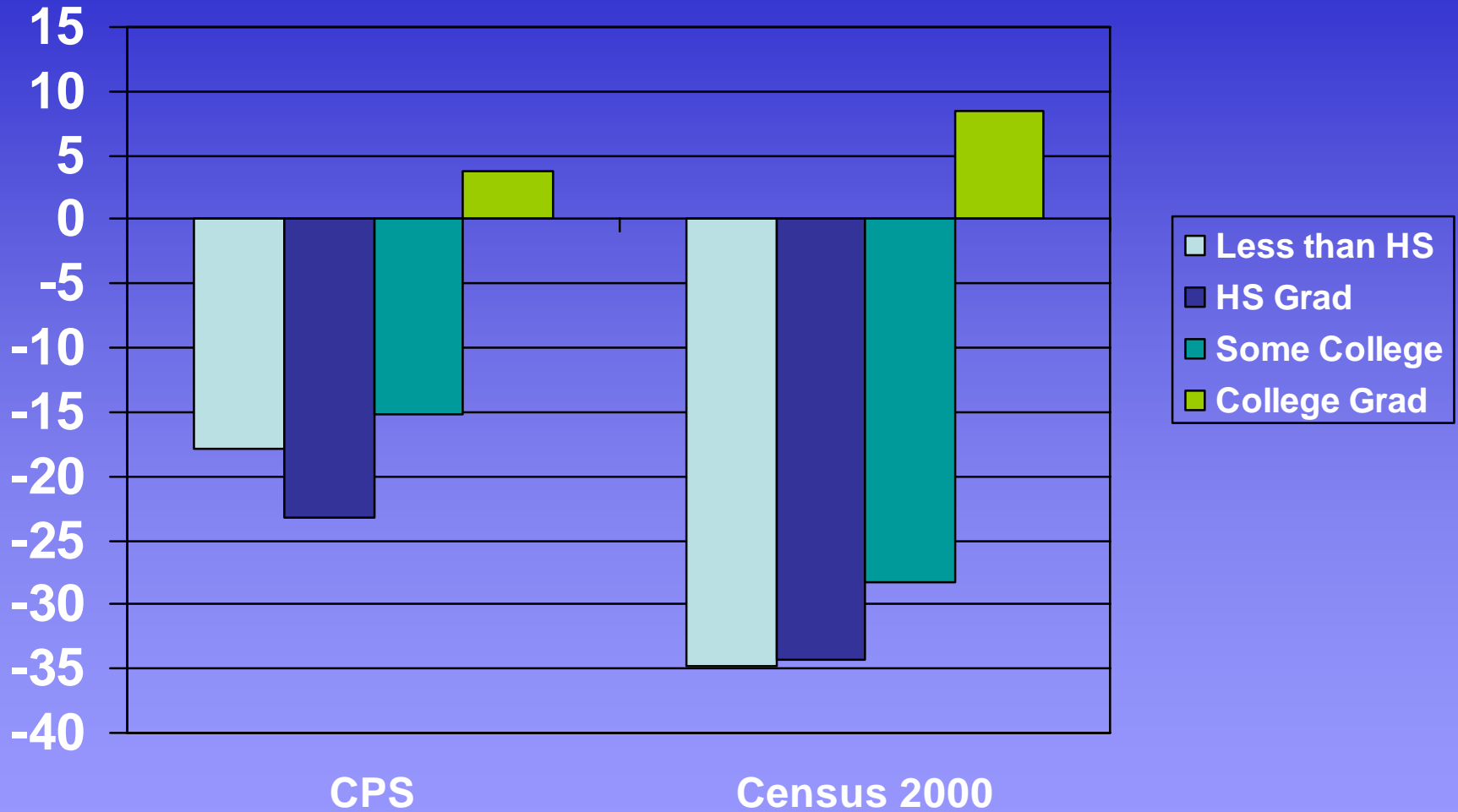
California Migration Components, 1995-2000



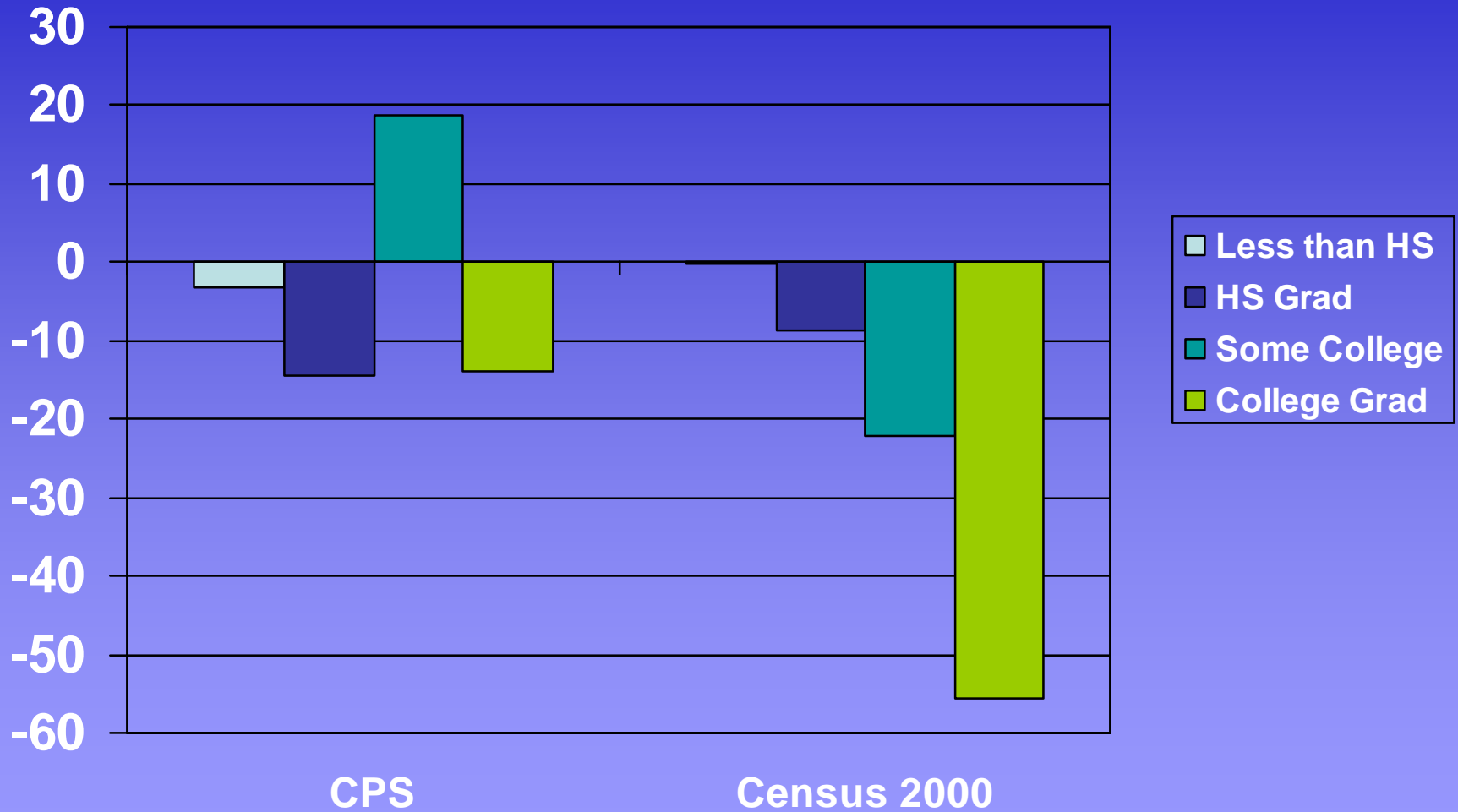
Louisiana Migration Components, 1995-2000



California Migration by Education, 1995-2000



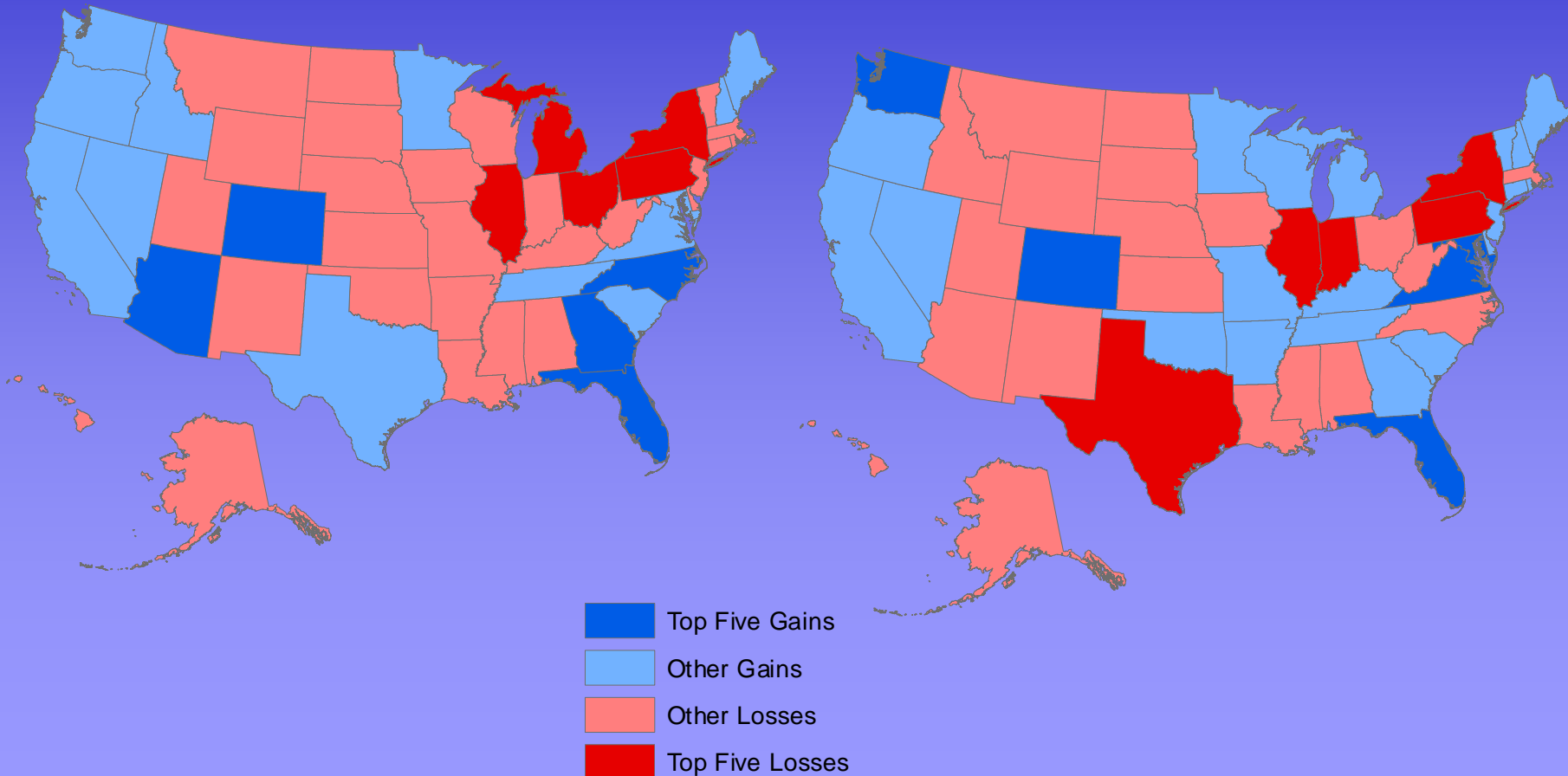
Louisiana Migration by Education, 1995-2000



College Grad Migration, 1995-2000

2000 Census

CPS



Source: William H. Frey

Immigration Flows, 1992-2004

All Measures of Annual Flows Show Similar Trends for 1992-2004

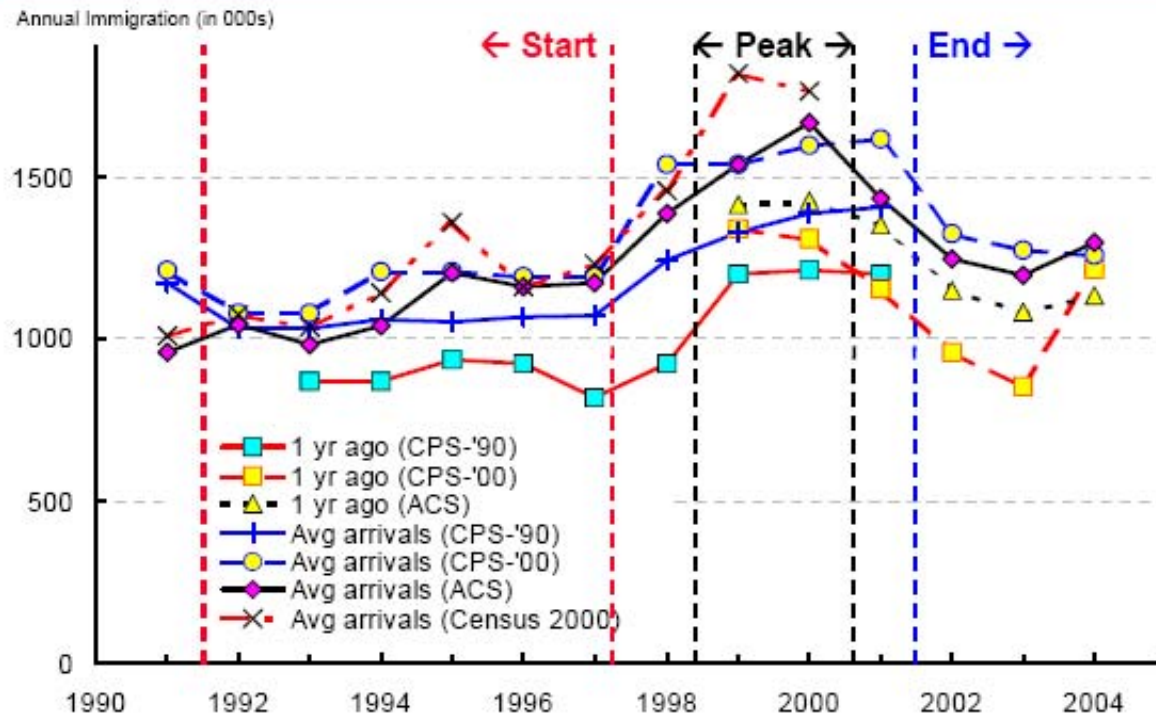


Figure 10. Annual Immigration to the United States by Data Source and Estimation Method: 1991-2004

Source: Detailed Table 2a.