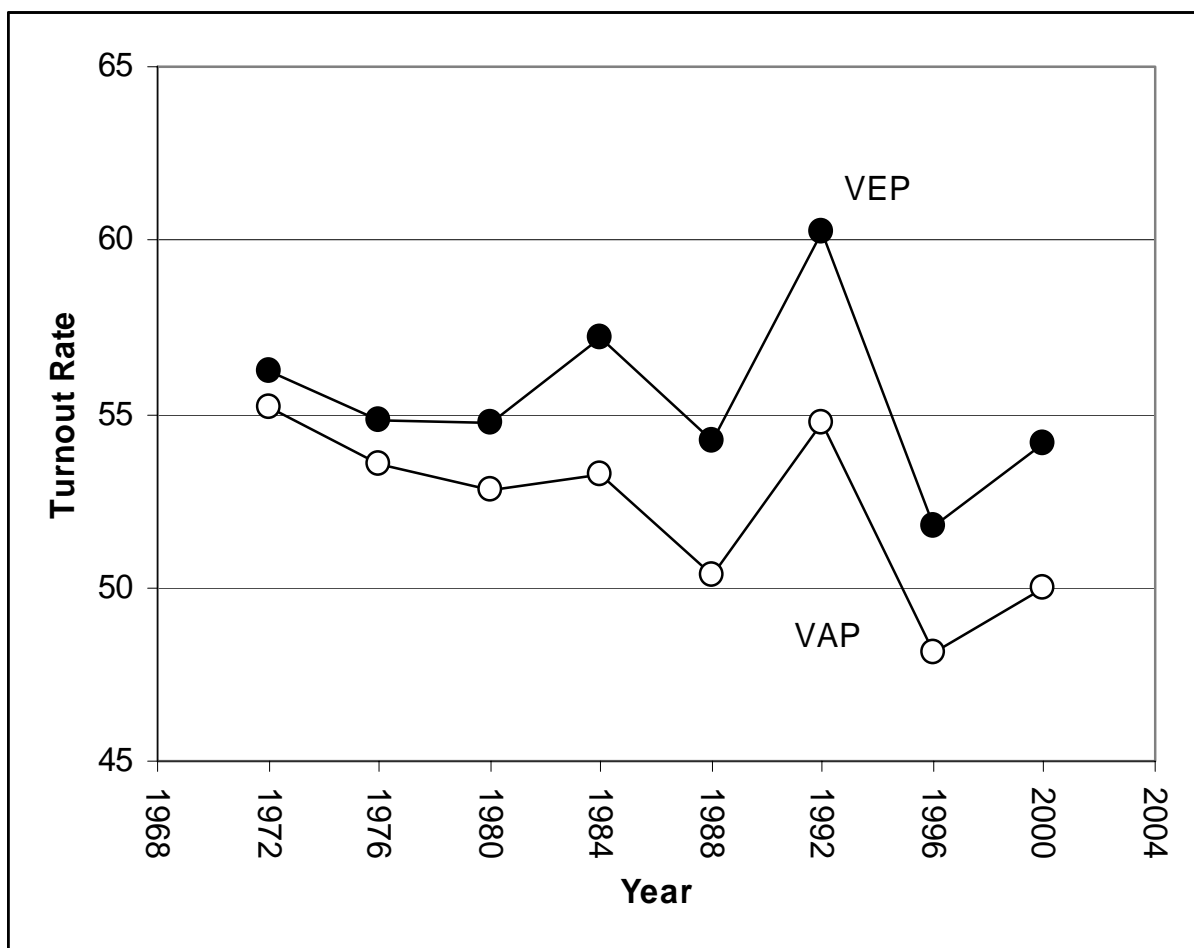


Figure 1
Presidential Election Turnout Rates
 Voting-Age Population (VAP) vs.
 Voting-Eligible Population (VEP)



2004 VAP and VEP Population Estimates

Voting Age Population (VAP)	221,285,099
- Non-Citizens	-17,523,247
- Ineligible Felons	- 3,205,137
+ Overseas Eligible	+ 3,308,145
Voting Eligible Population (VEP)	203,864,860

Figure 2

Interest in Presidential Campaigns

Source: Pew Research Center for the People and Press

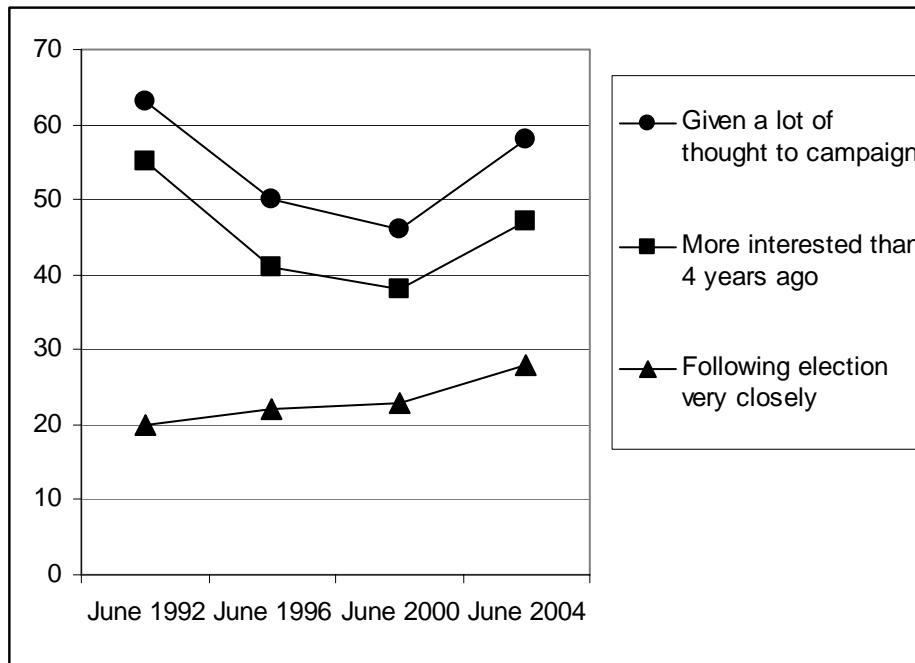
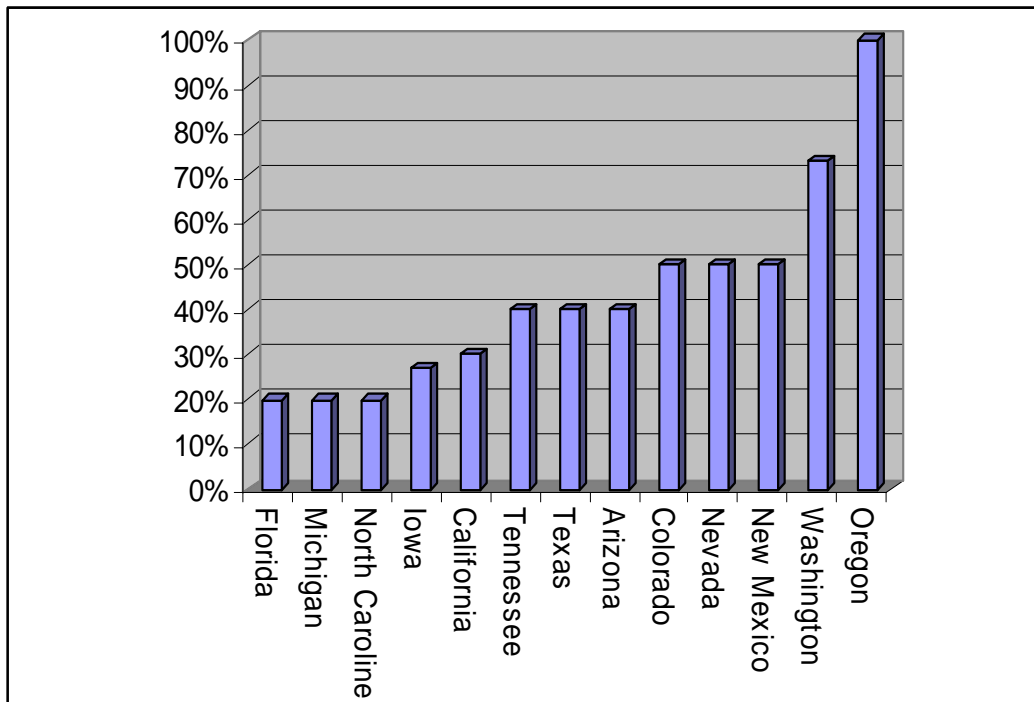


Figure 3 2004 Absentee Voting Estimates for Selected States



Oregon Mail-in Balloting

As of Tues., Oct. 26: 821,729 or 38% of total registrations
 For the similar date in 2000 (Tues., Oct. 31): 506,501 or 26% of total registrations

There are 2,148,514 registered voters in Oregon. 80% of Oregon registered voters voted in 2000, if 12 percentage points more vote in 2004, the total number of ballots cast will be 1,976,633 for a turnout rate of 76.3% among those eligible to vote. 2000 turnout rate (total ballots cast) for those eligible was: 65.9% (64.9% turnout rate for vote for president)

Early Voting in Florida

718,262 early votes as of Oct. 28. 707,635 Absentee received of 1,496,485 requests. If, as projected, 20% of votes cast will be absentee, the total number of ballots cast will be 7,482,425 for a turnout rate of 64.1% among those eligible to vote. The 2000 turnout rate in (total ballots cast) was 57.5% (55.9% turnout rate for president).

Early Voting in Nevada

230,360 early votes as of Oct. 26, for 1,508,328 eligible voters or 15.3% of those eligible to vote.