

Party Identification

Generally speaking, do you usually think of yourself as a Republican, a Democrat, an Independent, or what?

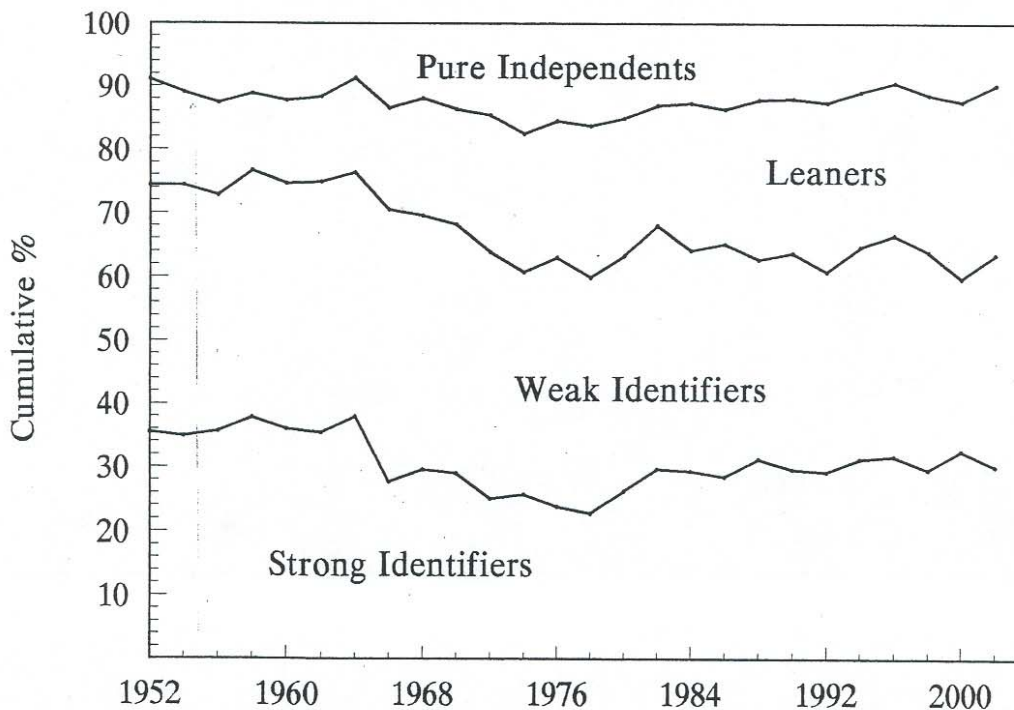
If Republican or Democrat:

Would you call yourself a strong [Republican/Democrat] or a not very strong [Republican/Democrat]?

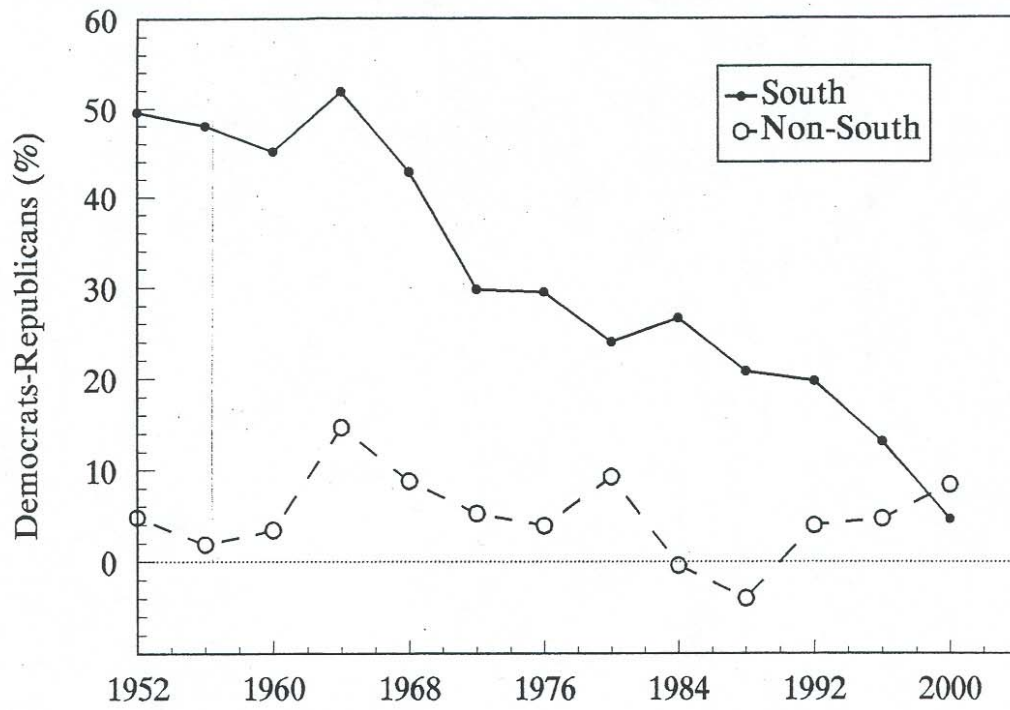
If Independent, other, or no preference:

Do you think of yourself as closer to the Republican or Democratic party?

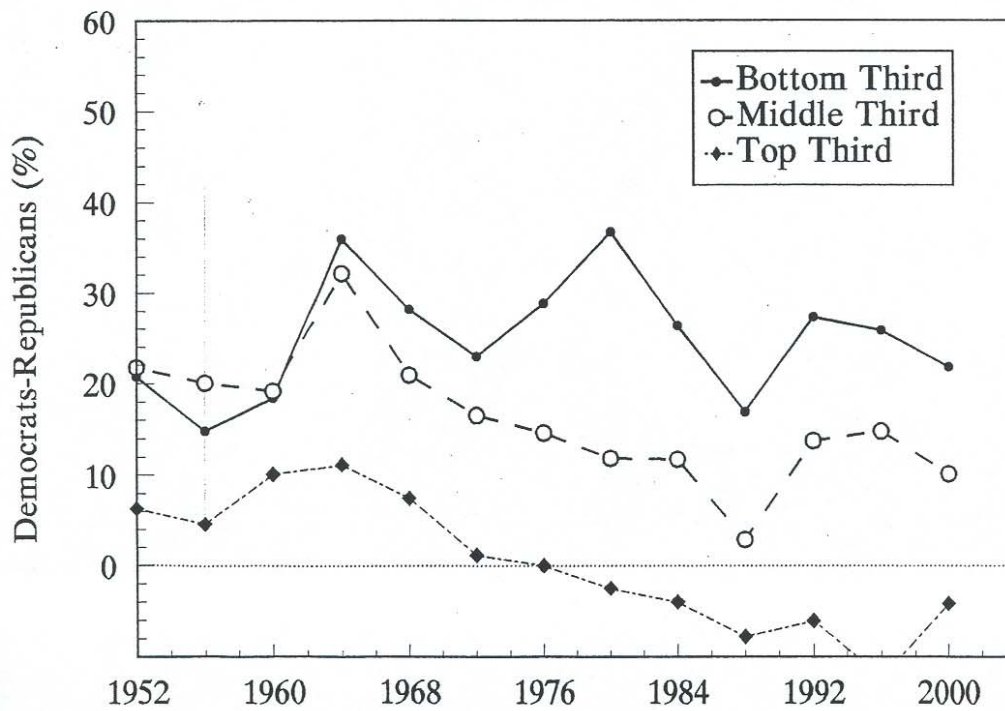
Changing Levels of Partisan Identification, 1952-2002



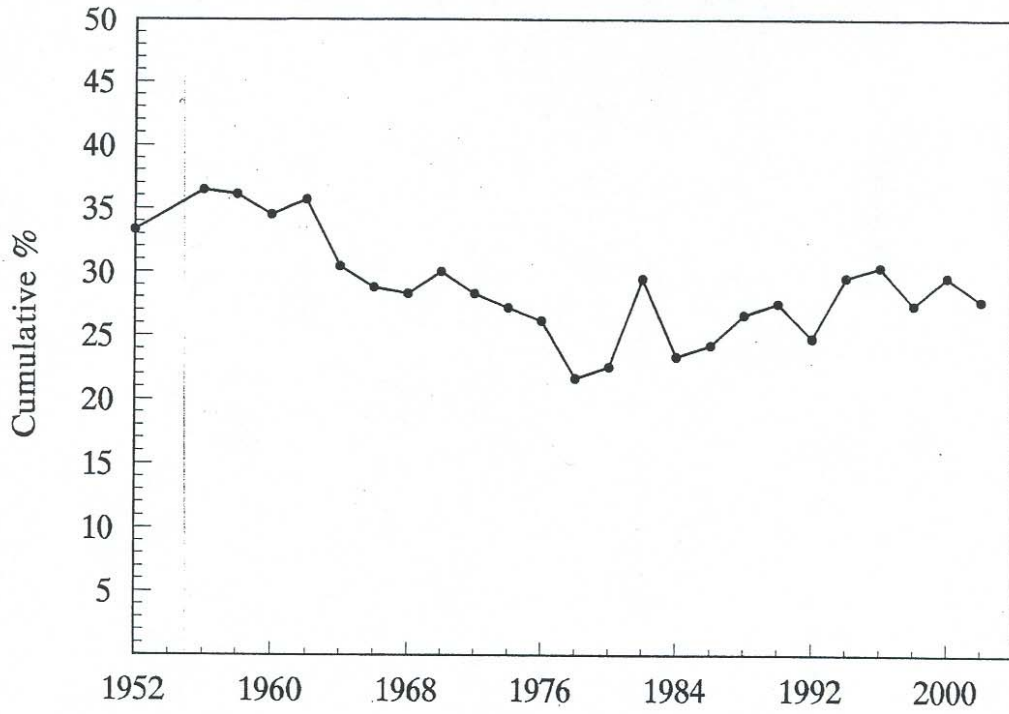
Partisan Balance Among Southerners and Non-Southerners



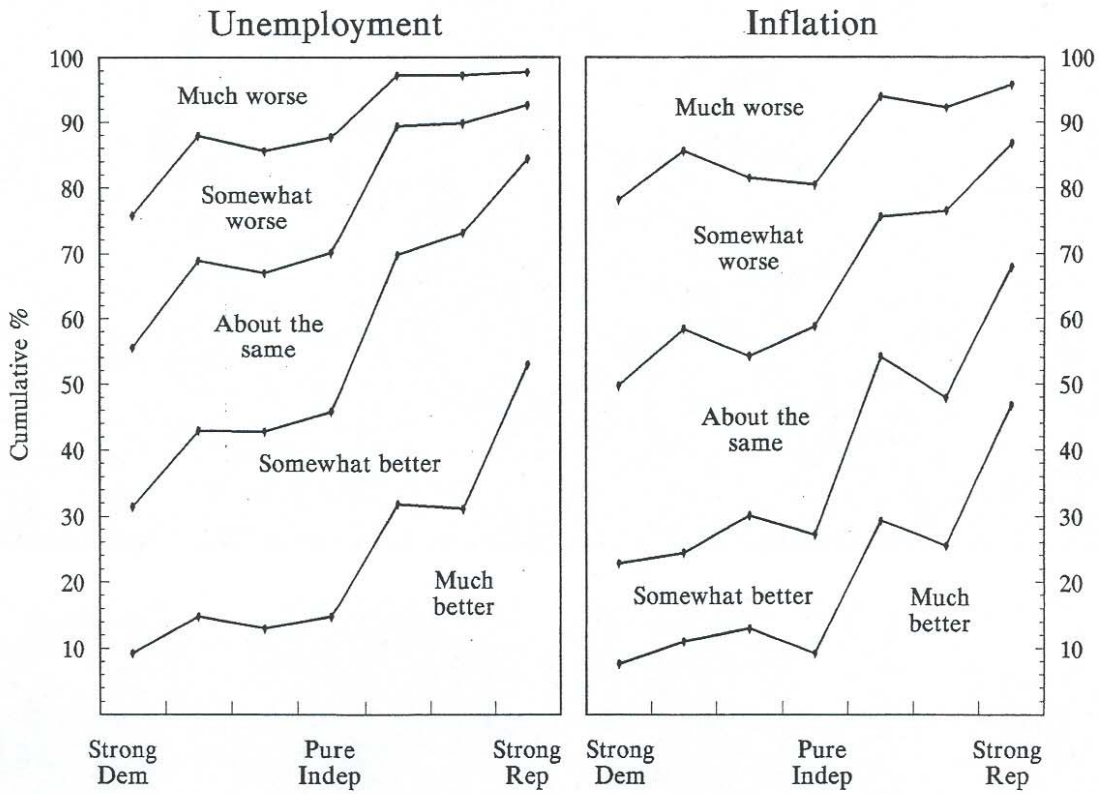
Partisan Balance by Income Class



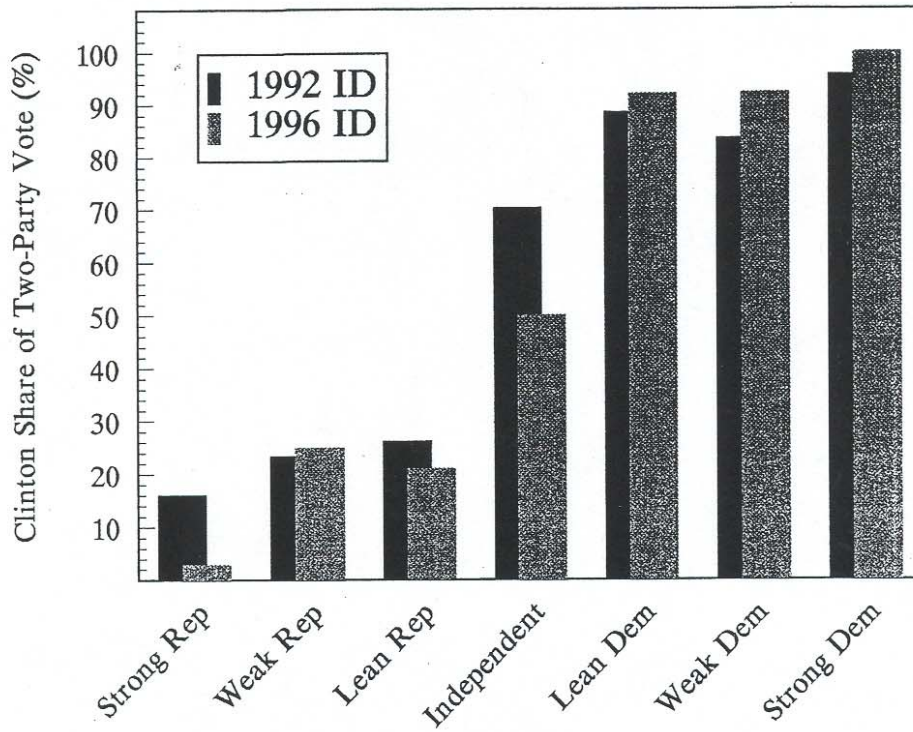
Partisan Voting in Congressional Elections, 1952-2002



Partisan Bias in Perceived Economic Conditions, 1988



Party Identification and Presidential Votes, 1996



Partisan Voting in Presidential Elections, 1952-2000

