

# What the 2008 Election Meant: Politics and Governance

James Stimson

Raymond Dawson Professor of Political Science, University of North  
Carolina at Chapel Hill

Presented at an event hosted by the Governance Studies Program at the Brookings  
Institution in partnership with the Center for the Study of Democratic Politics at  
Princeton University's Woodrow Wilson School of Public Affairs

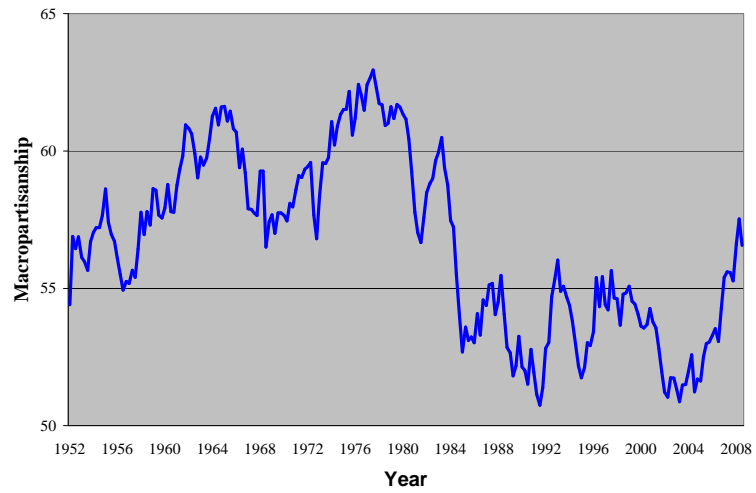


Figure 1: Movement in (Democratic) Macropartisanship: Quarterly 1952–2008

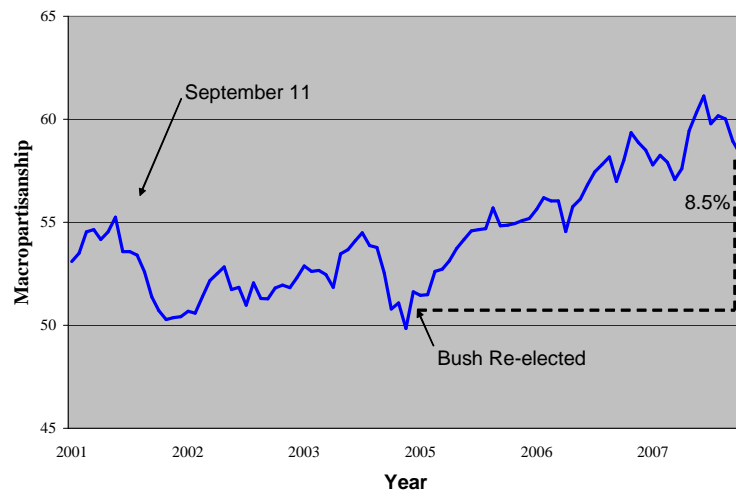


Figure 2: Movement in Macropartisanship: Monthly 2001–2008

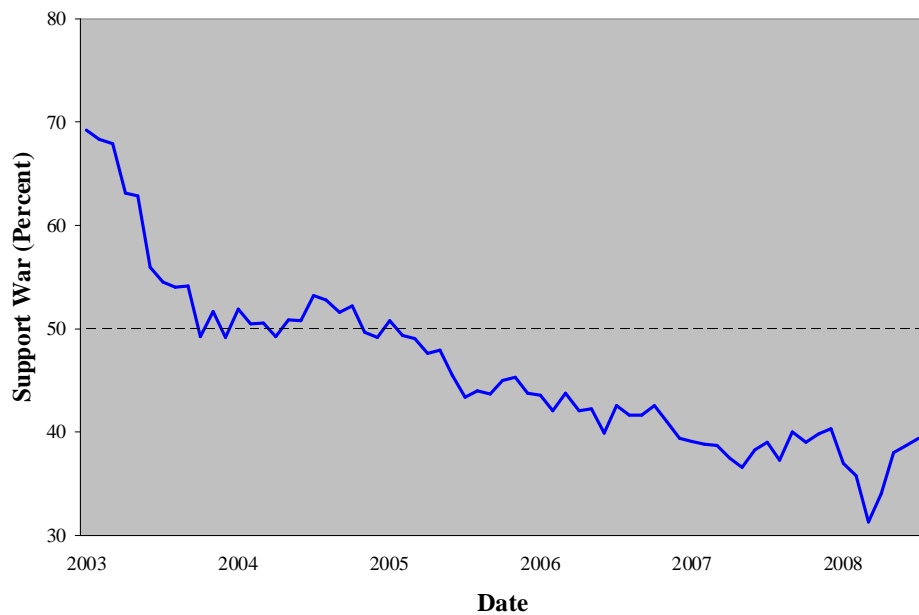


Figure 3: Declining Public Support for the War in Iraq: March, 2003 to September, 2008

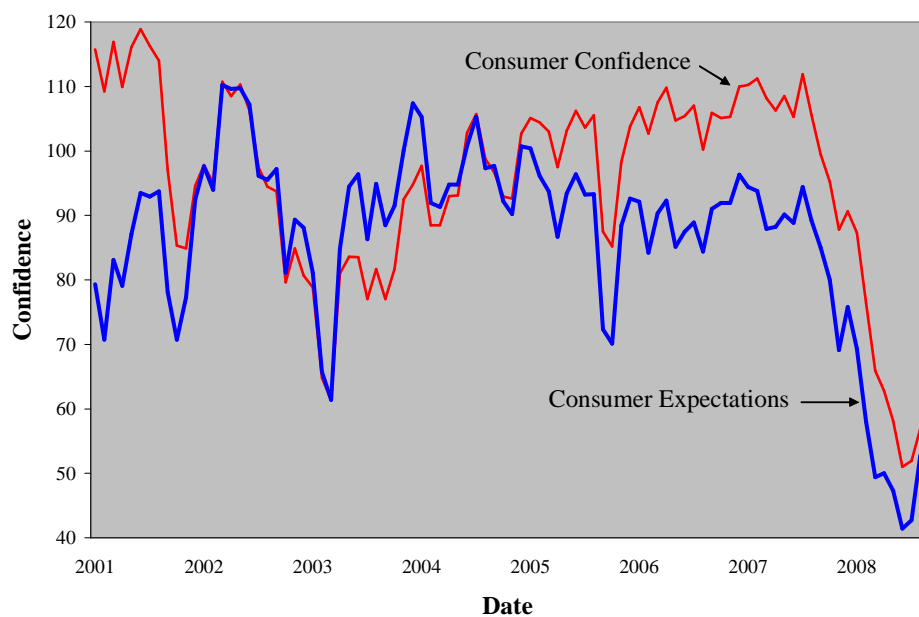


Figure 4: Conference Board Consumer Confidence: Monthly, January, 2001–August, 2008, **BEFORE** the October Crisis

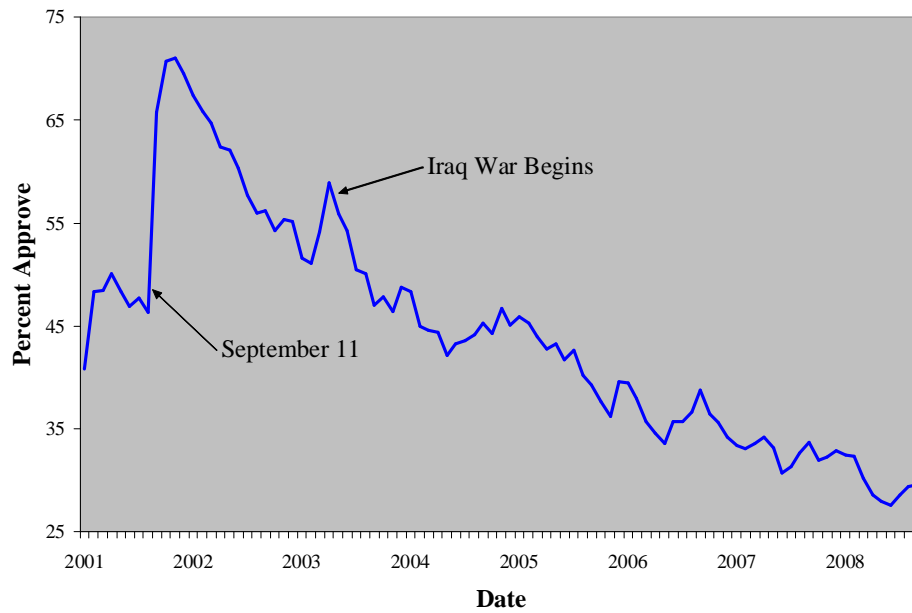


Figure 5: Approval of George W. Bush: A Long Downhill Slide

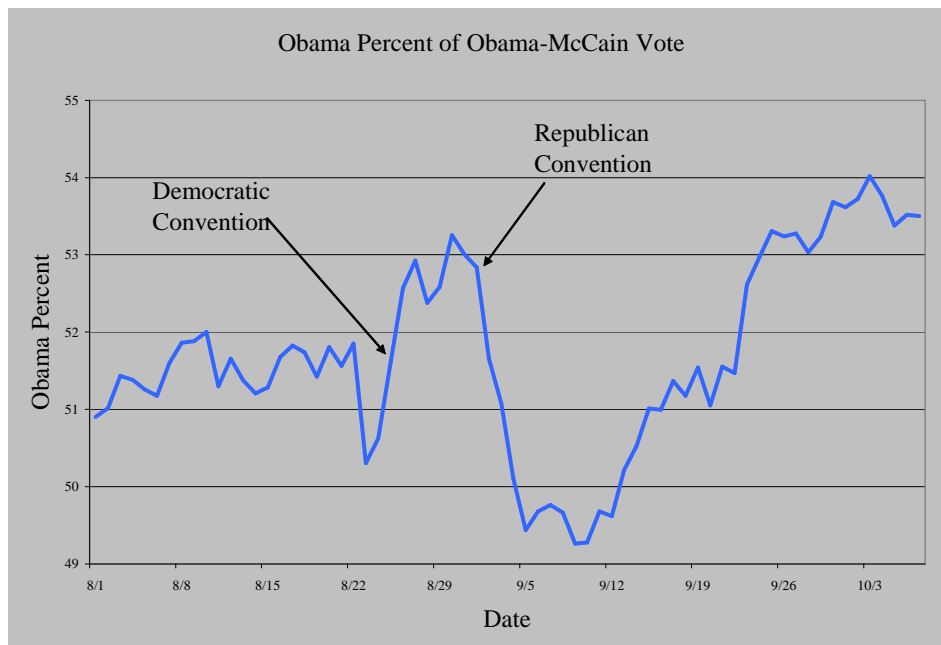


Figure 6: The Last Three Months: Convention Bounces and an Obama Surge

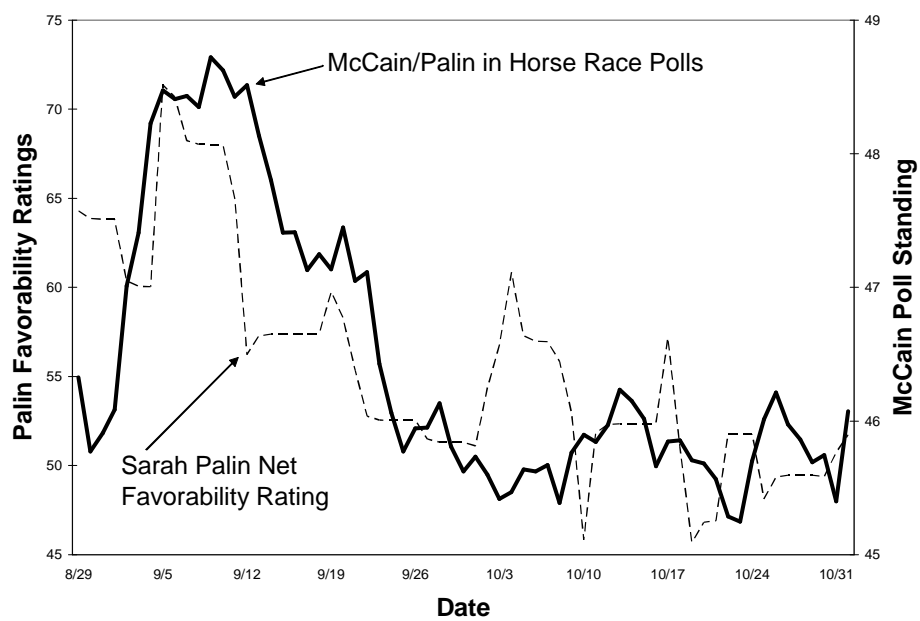


Figure 7: The Palin Effect on McCain's Standing in the Polls: August 29 to November 1