

# Comments on New Income and Health Insurance Coverage Statistics



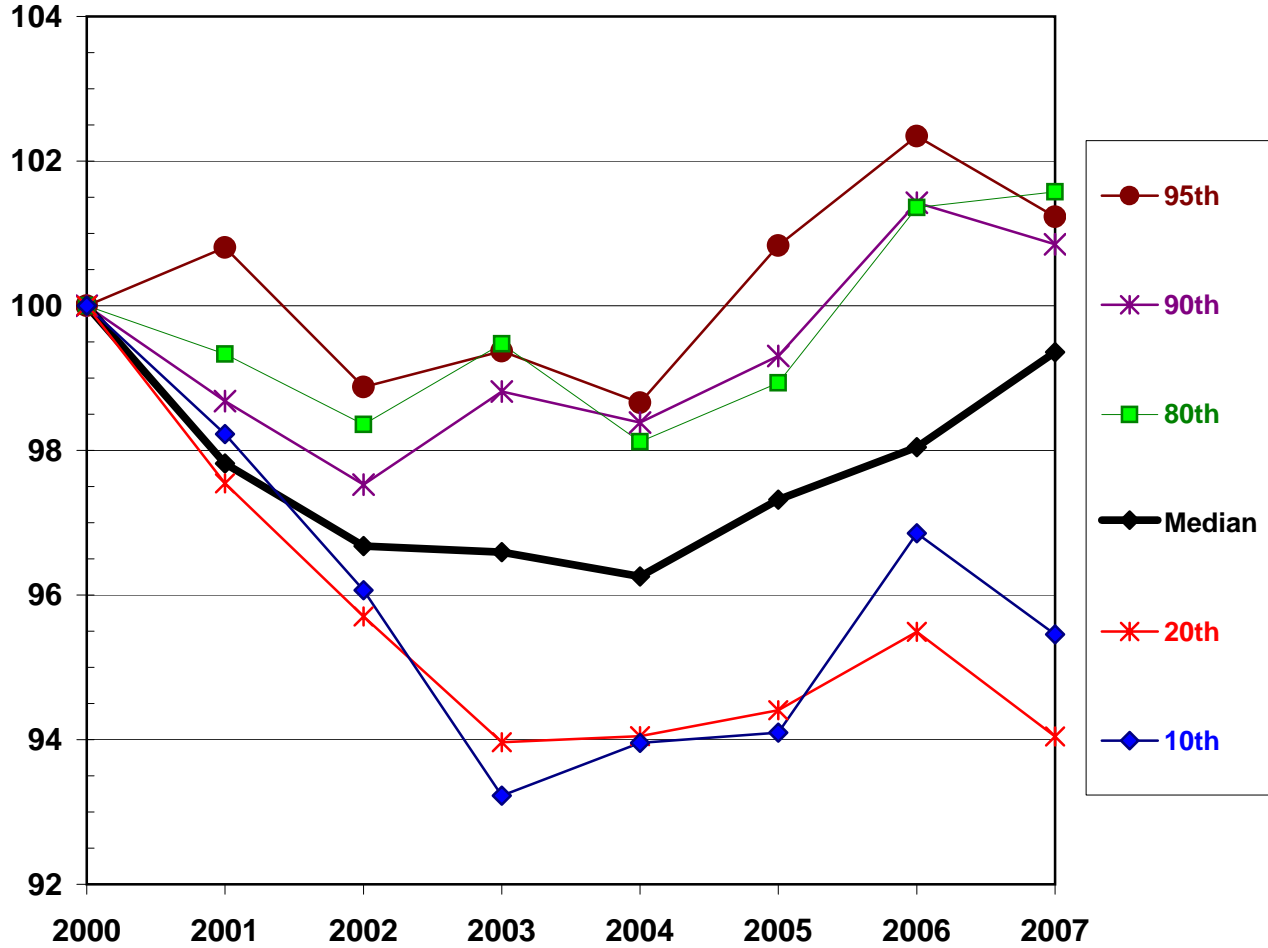
*by* **Gary Burtless**  
The Brookings Institution  
Washington, DC

August 26, 2008

5 Charts

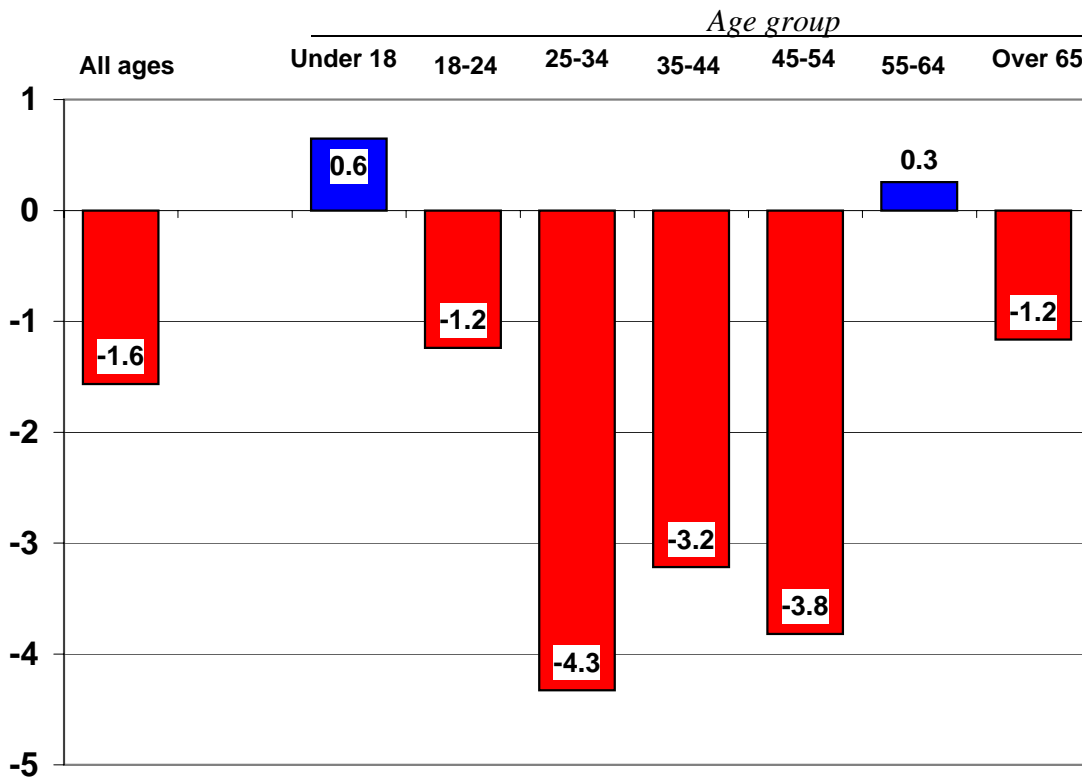
**Chart. Trends in Real Household Income by Position in Income Distribution, 2000-2007** (Income in 2000 = 100)

Income in 2000 = 100

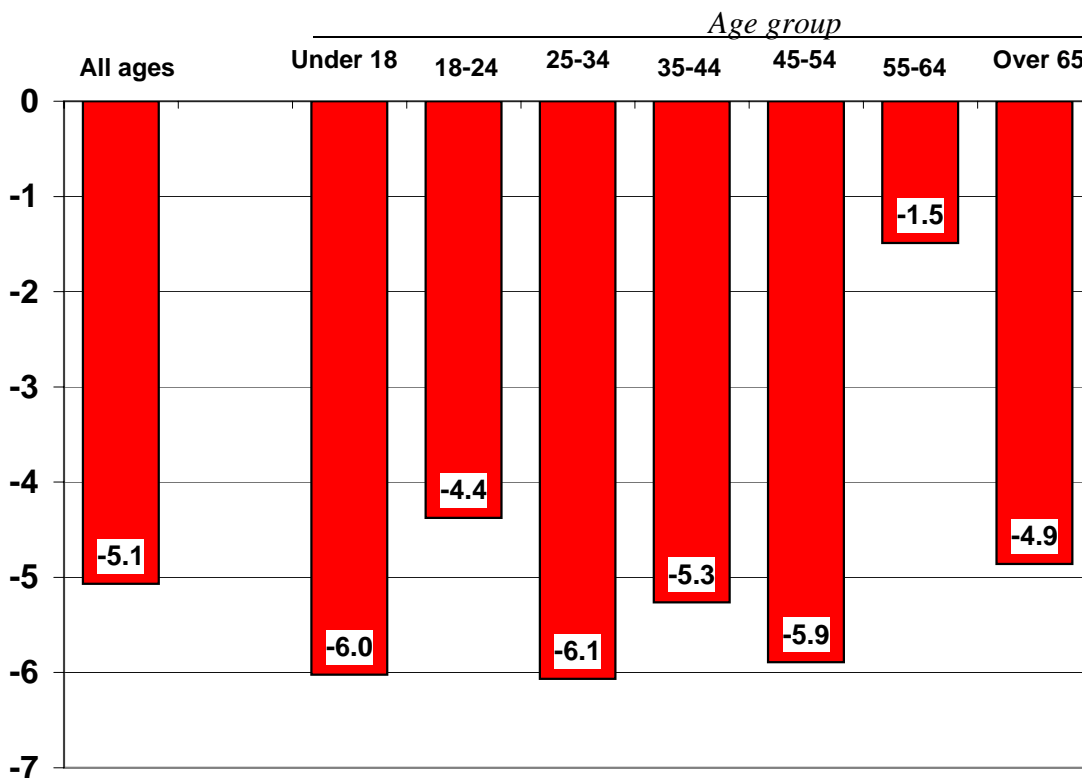


Source: U.S. Census Bureau, P60-235 (August 2008).

**Chart. Change in Percentage of Population Covered by Any Health Insurance Plan, 2000-2007** (percent of population)



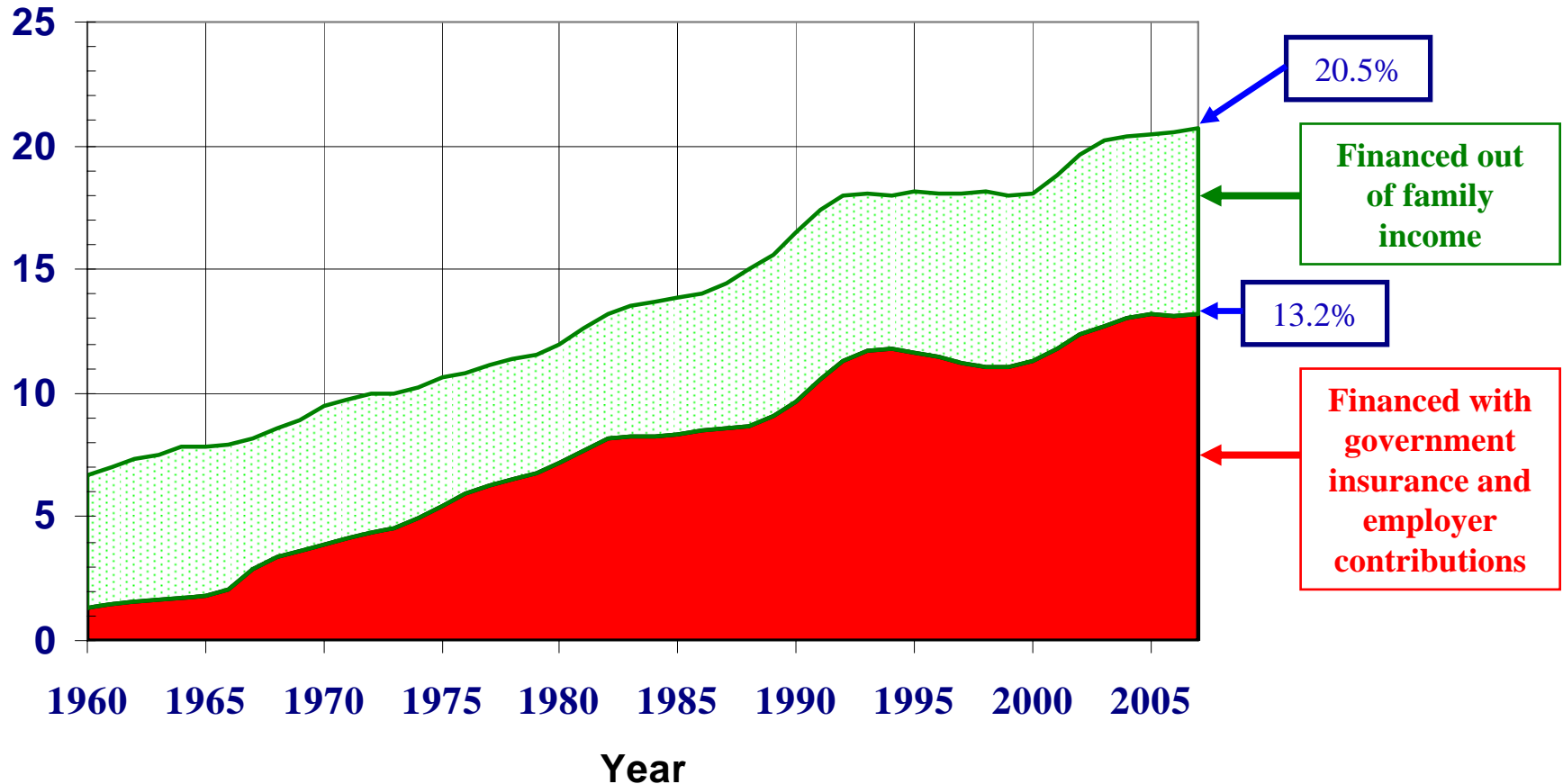
**Change in Percentage of Population Covered by a Private Health Insurance Plan, 2000-2007** (percent of population)



Source: U.S. Census Bureau, P60-235 (August 2008).

# Chart. Personal Consumption Expenditures on Health Care Goods and Services, 1960-2007

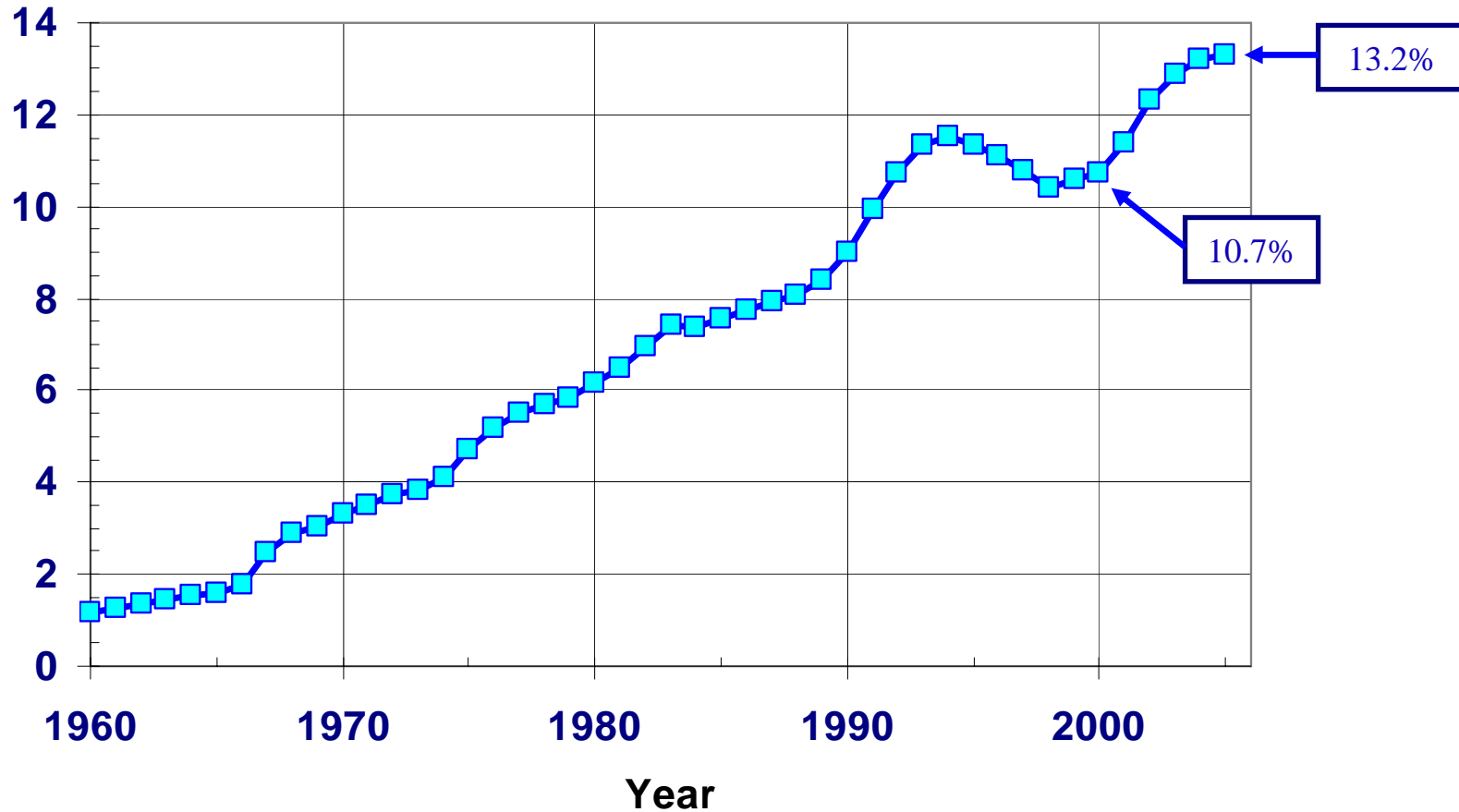
Percent of personal consumption expenditures



Source: National income and product account data.

# Employer and Government Payments for Health Insurance ... as a Percent of Total Money Income, 1960-2005

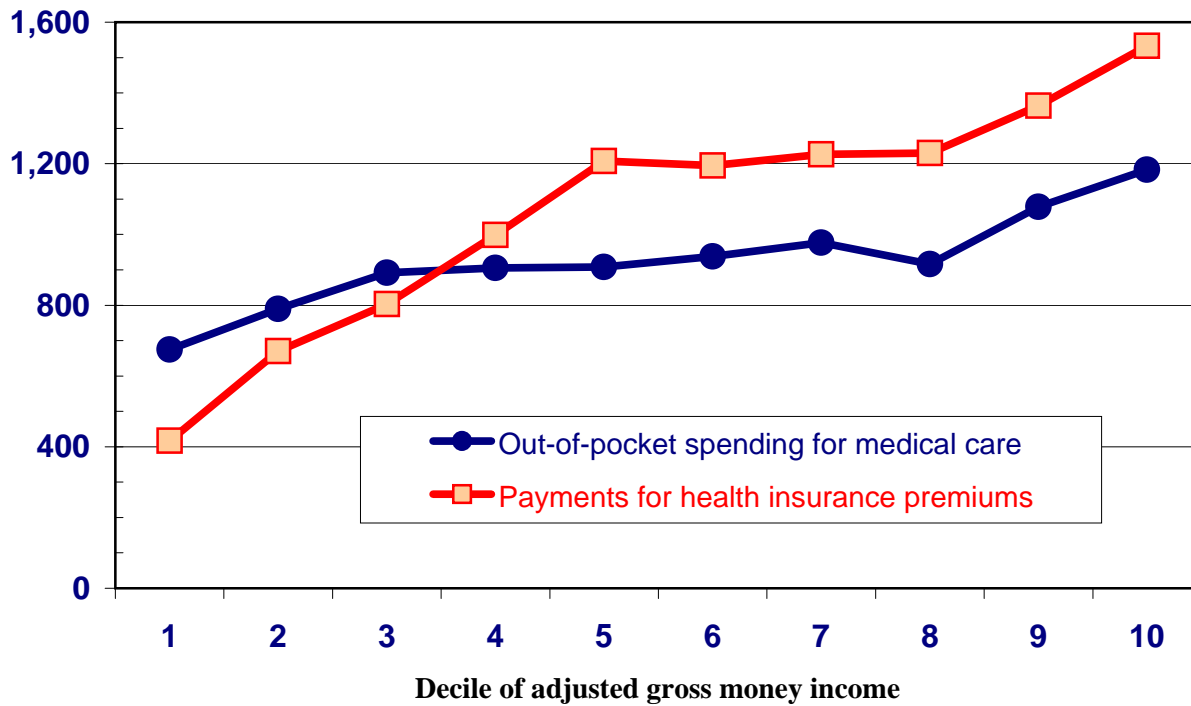
Percent of total money income



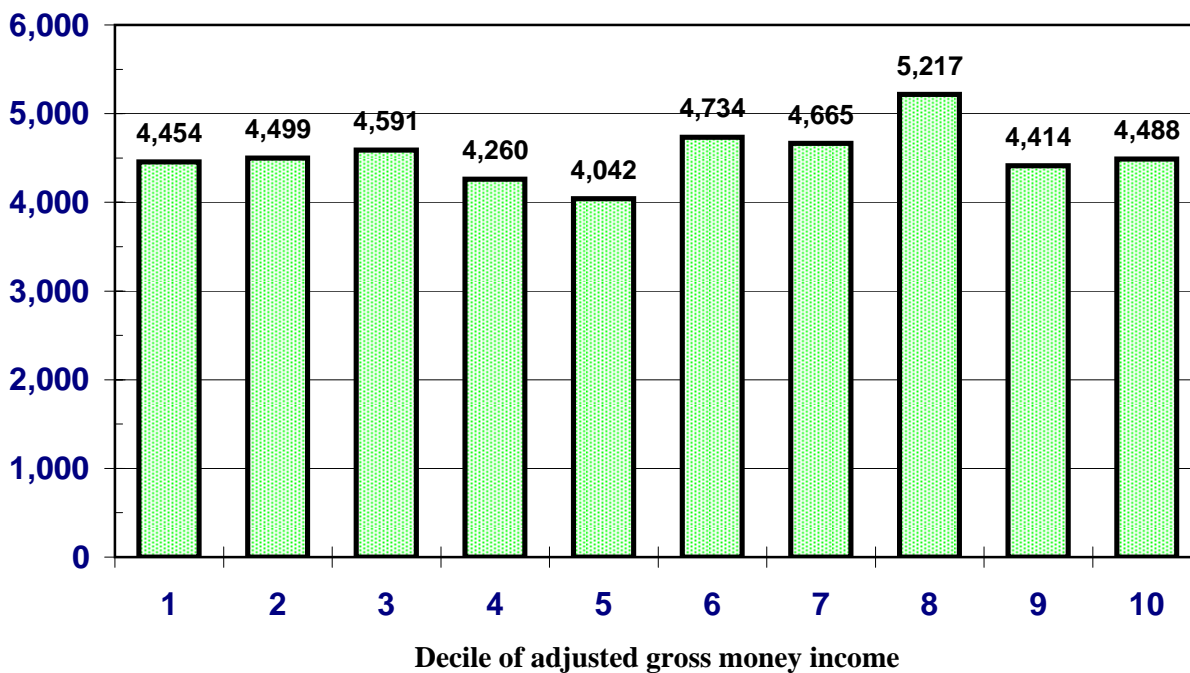
Source: National income and product account data.

**Chart. Out-of-Pocket Spending, Insurance Premiums, and Total Health Expenditures in the MEPS, by Money Income Decile, 2003**

**Family payments for health insurance and medical care**



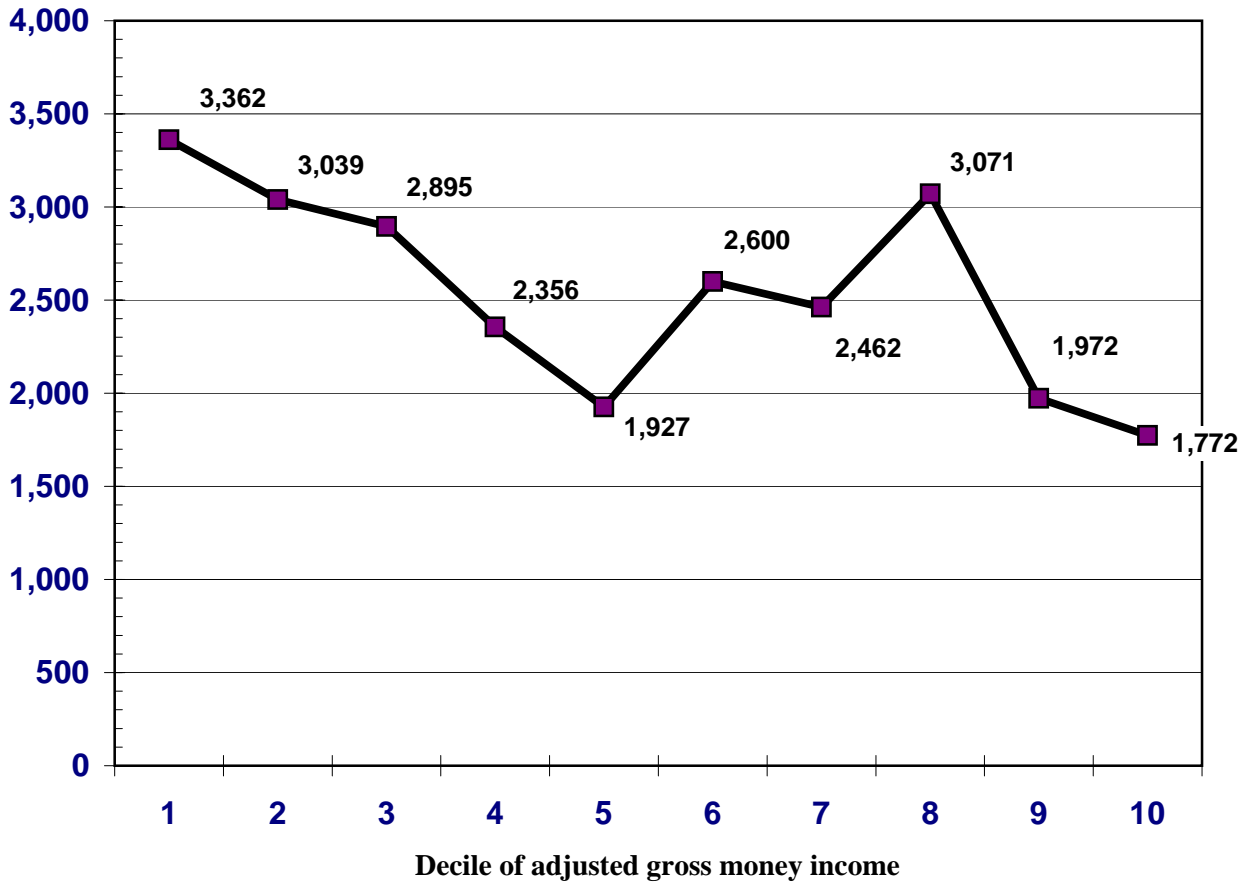
**Health expenditures per person**



Source: Author's tabulations of 2003 Medical Expenditure Panel Survey, household file.

### Chart. Net Benefits Derived from Government and Employer-Provided Insurance, by Money Income Decile, 2003

Health expenditures minus  
Family payments for insurance and medical care



Source: Author's tabulations of 2003 Medical Expenditure Panel Survey, household file.

# Conclusions on the importance of health benefits in the income statistics



- Two-thirds of personal health care consumption is financed by employers and the government: It is not counted in the Census Bureau's estimates of "money income"
- The addition to household income from this source would have added ...
  - 1.2% to total money income in 1960
  - 6.2% to total money income in 1980
  - 13.3% to total money income in 2005