

2007 Poverty & Income Data Release

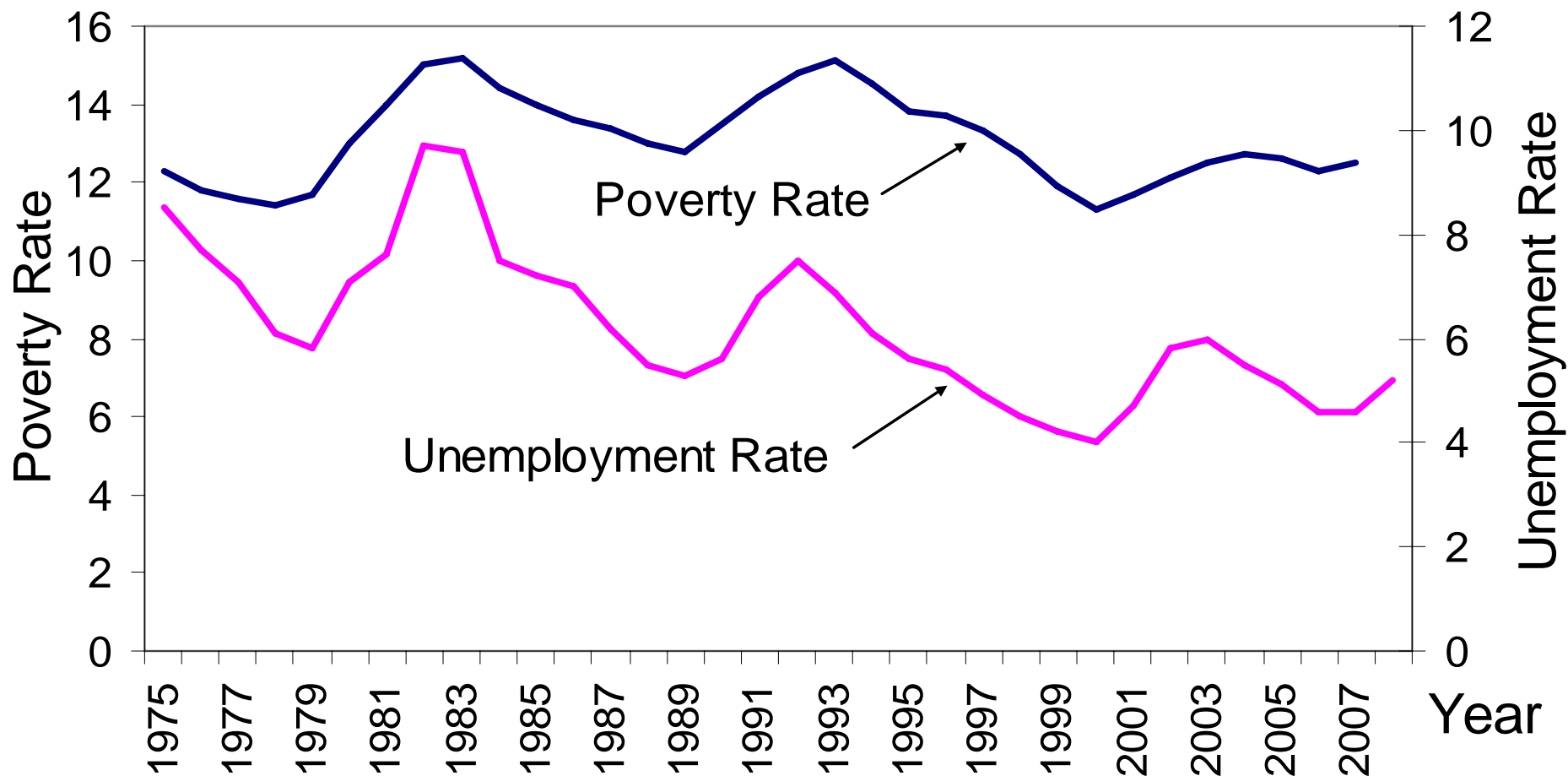
August 26, 2008

Rebecca Blank

Robert V. Kerr Senior Fellow

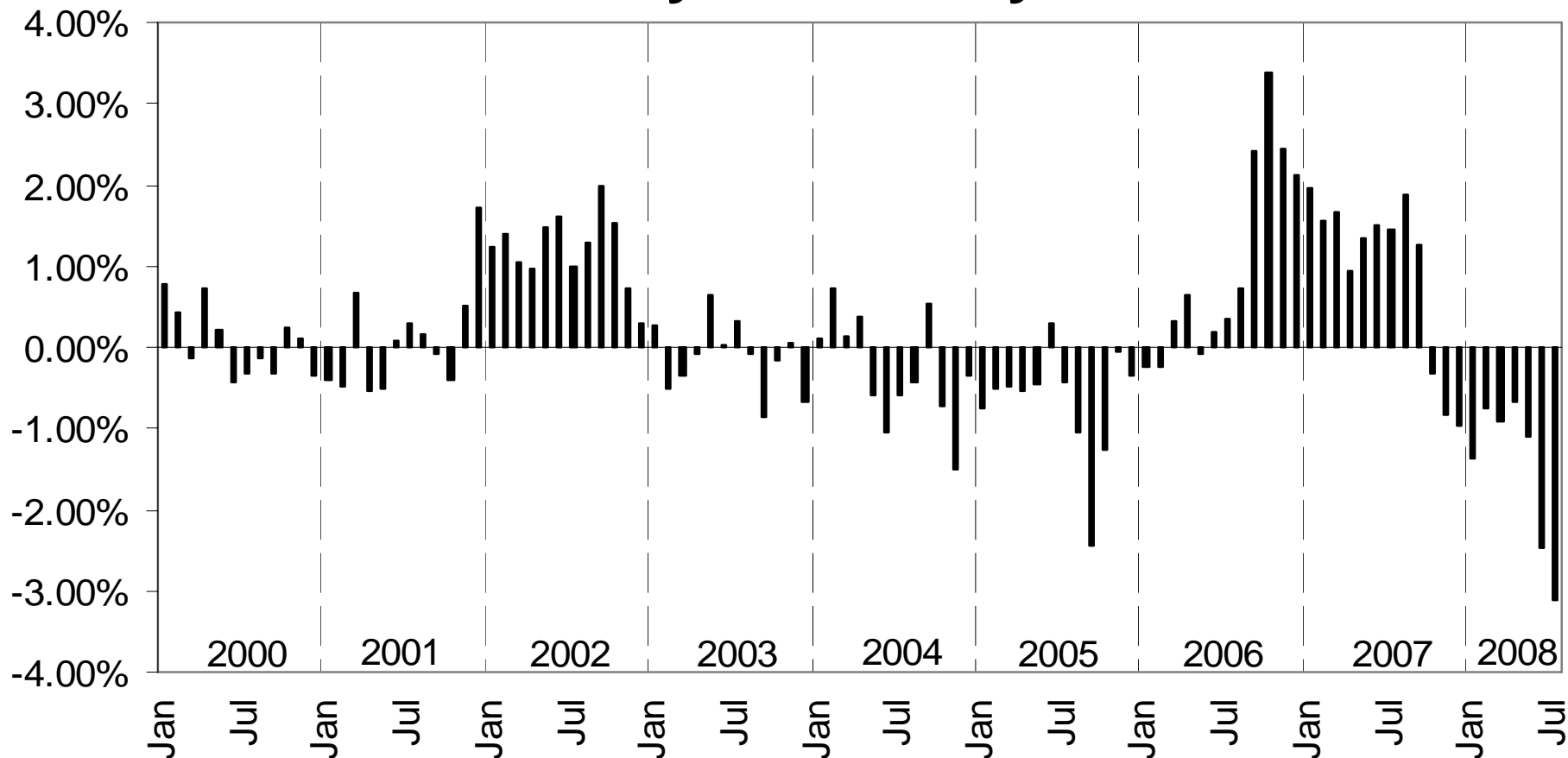
Brookings Institution

Poverty Rate Versus Unemployment Rate



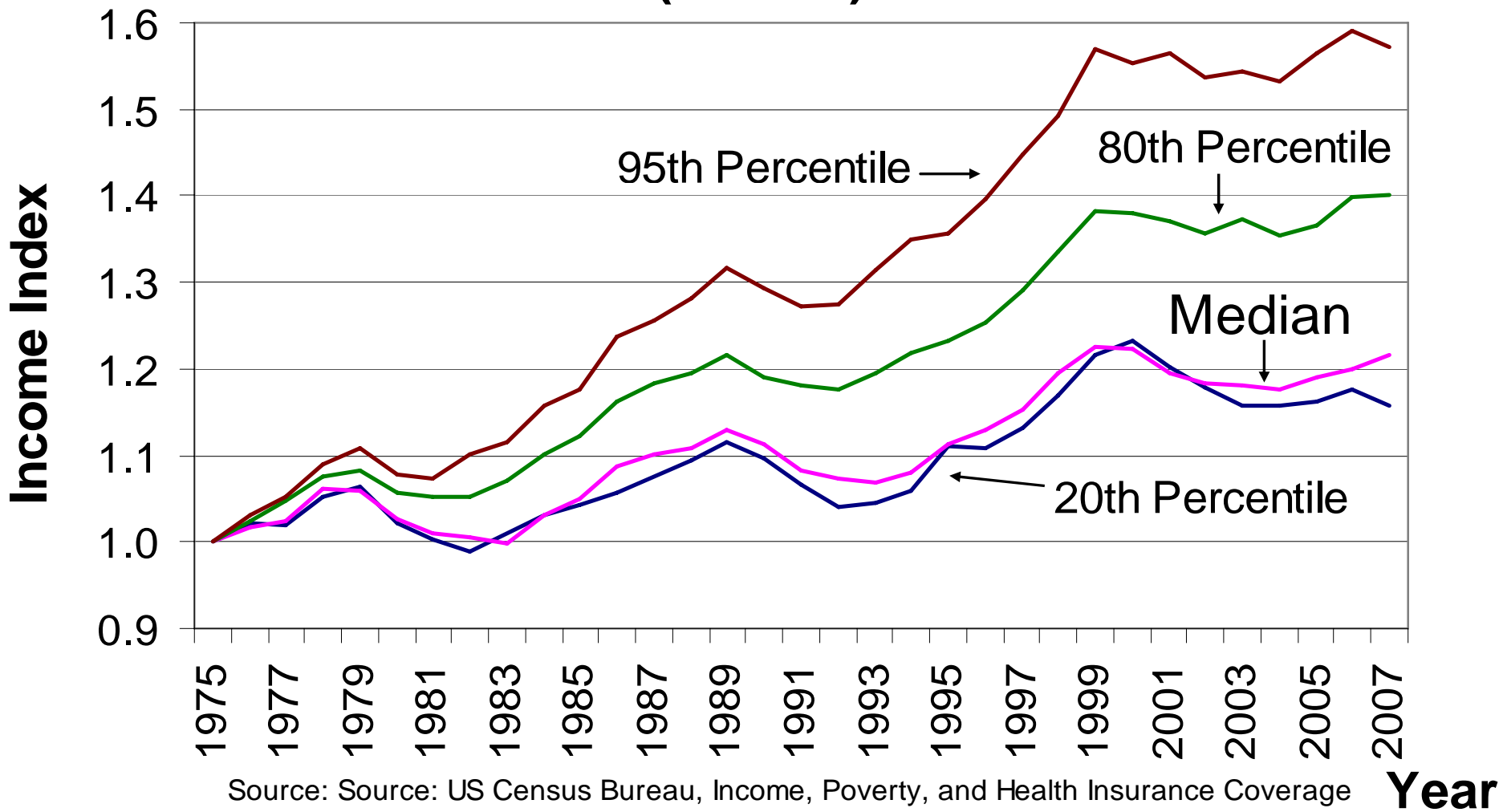
Sources: Poverty rate from US Bureau of the Census, Historical Poverty Tables (<http://www.census.gov/hhes/www/poverty/histpov/hstpov2.html>). Unemployment rate from Department of Labor, Bureau of Labor Statistics. (<http://www.bls.gov/cps/tables.htm#empstat>, Table 1 & A-1). 2008 unemployment rate is average from January through July.

Yearly Change in Real Weekly Earnings, January 2000 - July 2008



Source: Figure and data for January 2008 to February 2008 provided by Jared Bernstein at the Economic Policy Institute, originally published online at http://www.epi.org/content.cfm/webfeatures_snapshots_20080220se. Updated data for other months are author's tabulations. Original data from the Bureau of Labor Statistics.

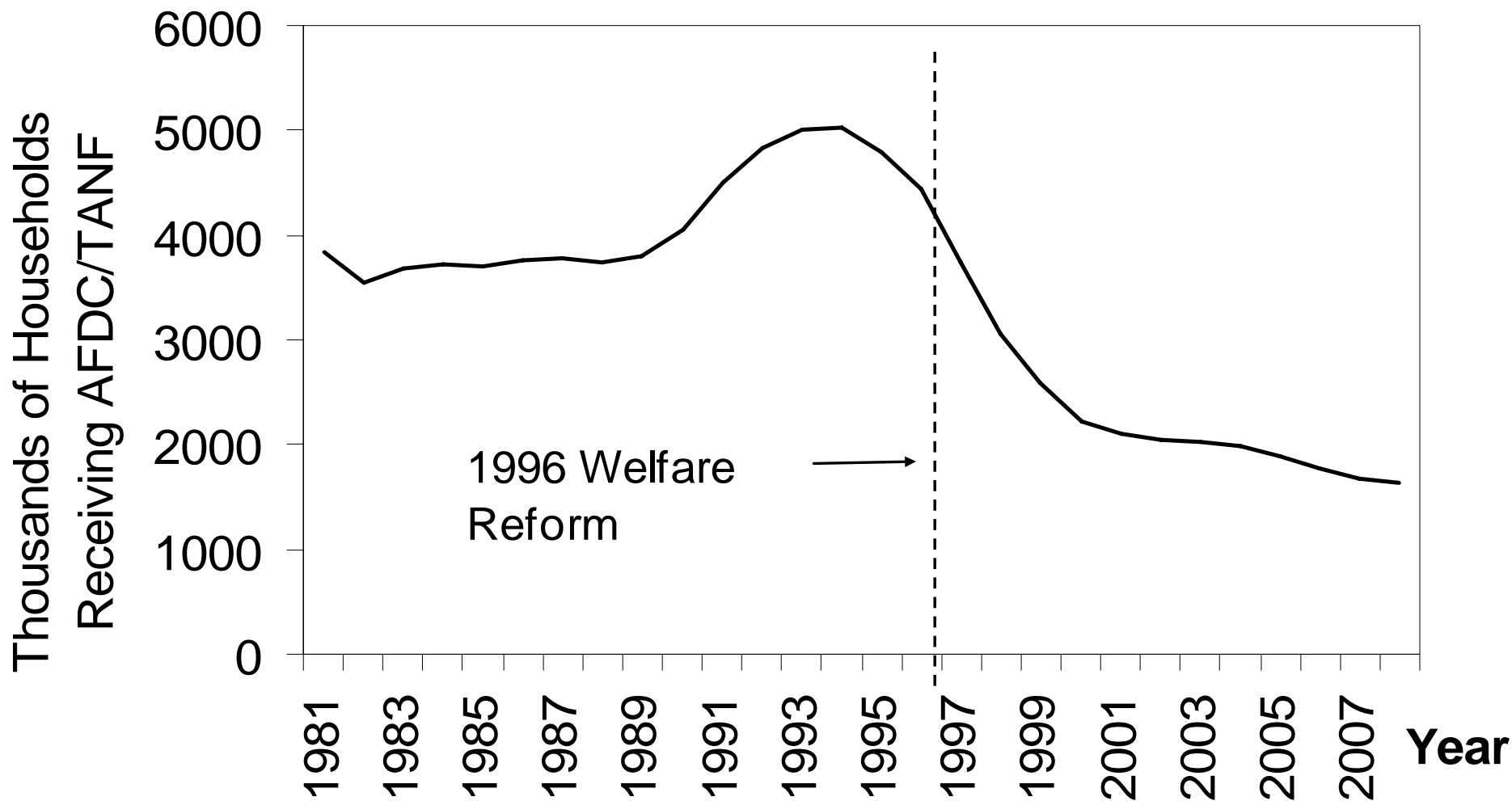
Indexed Household Income by Percentile (1975=1)



Source: Source: US Census Bureau, Income, Poverty, and Health Insurance Coverage in the United States: 2007 (<http://www.census.gov/prod/2008pubs/p60-235.pdf>)

Index calculated by author

Total AFDC/TANF Caseloads



Source: Website for Agency for Children and Families, Department of Health and Human Services (<http://www.acf.dhhs.gov>). 2008 data is average from January through March of 2008.