

THE BROOKINGS INSTITUTION
Metropolitan Policy Program

1775 Massachusetts Ave, NW Washington, DC 20036
Telephone: 202-797-6000; Fax: 202-797-2963

Katrina Index
Tracking Variables of
Post-Katrina Recovery

Updated August 8, 2006

Amy Liu, Deputy Director
aliu@brookings.edu

Matt Fellowes, Fellow
mfellowes@brookings.edu

Mia Mabanta, Senior Research Assistant
mmabanta@brookings.edu

TABLE OF CONTENTS

I.	About the Index.....	3
II.	Key Tracking Figures.....	4
III.	Economic Indicators.....	10
	Table 1. Number of Unemployment Claims.....	11
	Table 2. Unemployment Rates for Returning and Displaced Evacuees.....	12
	Table 3. Unemployment Rates by Geography.....	13
	Table 4. Labor Force Size.....	14
	Table 5a. Number of Non-farm Employed People, by Industry: Totals.....	15
	Table 5b. Number of Non-farm Employed People, by Industry: Service Providing.....	18
	Table 5c. Number of Non-farm Employed People, by Industry: Goods Providing.....	21
	Table 5d. Number of Non-farm Employed People, by Industry: Government.....	24
	Table 6a. Average Weekly Wage: Industry Sectors A-M.....	27
	Table 6b. Average Weekly Wage: Industry Sectors M-W.....	28
	Table 7. Delinquency and Foreclosure Rates for Louisiana, Mississippi, and the U.S.: Subprime Loans.....	29
	Table 8. Delinquency and Foreclosure Rates for Louisiana, Mississippi, and the U.S.: Prime Loans.....	30
	Table 9. Delinquency and Foreclosure Rates for Louisiana, Mississippi, and the U.S.: All Loans.....	31
	Table 10. Average Home Sale Price in New Orleans Metro, Single Family Homes, by Parish.....	32
	Table 11a. Number of Home Sales in New Orleans Metro, Single Family Homes, by Parish.....	32
	Table 11b. Total Home Sales: Single-Family, Apartment Condos, and Co-ops in Louisiana, Mississippi, and the U.S.....	33
	Table 12. Fair Market Rents in New Orleans Metro, by Unit Bedrooms.....	33
	Table 13. Quarterly Personal Income.....	34
IV.	Short Term Recovery Indicators.....	35
	Table 14. Number of Operational and Closed Public Transportation Routes in New Orleans.....	36
	Table 15. Number of Operational and Non-Operational Buses in New Orleans.....	38
	Table 16. Number of Commercial Properties for Sales in New Orleans MSA, by Type.....	40
	Table 17. Number of Residential Properties for Sales in New Orleans MSA, by Parish.....	42
	Table 18. Number of Utilities Customers with Restored Service: Electric, Water, and Gas.....	43
	Table 19a. Number of People in Red Cross Shelters: Current and Cumulative.....	44
	Table 19b. Number of Red Cross Shelters: Current and Cumulative.....	45
	Table 20. FEMA Allocations and Expenditures, by Major Object Class.....	46
	Table 21. Number of Travel Trailers and Mobile Homes: Ordered and Operational.....	50
	Table 22. Number of Hotel Units Being Occupied.....	52
	Table 23. Number of Cruise Ship Cabins Being Occupied.....	53
	Table 24. Cumulative Number of Households Approved for Housing and Rental Assistance through the FEMA Individuals and Households Program.....	53
	Table 25. Number of Army Corps Building Demolitions, by Parish.....	54
	Table 26. Number of Building Permits Issued by New Orleans City Hall.....	54
V.	Longer Term Rebuilding Indicators.....	55
	Table 27. Population.....	56
	Table 28. Proportion of Open Public Schools in New Orleans Metro, by Parish.....	57
	Table 29. Number of College Students Returning to New Orleans.....	57
	Table 30. Number of Open, Limited Service, and Closed Hotels in New Orleans Metro.....	58
	Table 31. Proportion of Open Retail Food Establishments in New Orleans Metro.....	58
	Table 32. Number of Open Public Libraries in New Orleans, by Parish.....	59
	Table 33. Proportion of Major Hospitals in Operation, by Parish.....	60
	Table 34. Number of Operational Child Care Centers in Louisiana and Select Parishes.....	61
	Table 35. Number of New Residential Housing Permits, by Type.....	62
	Table 36. Number of Passengers Arriving and Departing from Louis Armstrong International Airport.....	64
	Table 37. Amount of Air Freight and Mail Transported Through Louis Armstrong International Airport.....	65

I. ABOUT THE INDEX

Rebuilding New Orleans and the Gulf area is costing billions of dollars and transforming the lives of millions of people. To benchmark the progress made in this effort, we have created this index of economic and social indicators that measure the impact of rebuilding efforts in Orleans Parish, the New Orleans metropolitan area, Louisiana, and Mississippi.

This information is designed to serve as an independent, fact-based, resource for leaders to monitor and evaluate rebuilding efforts. As of now, we intend to update the index once a month through December 2006.

While many communities in the Gulf Coast were badly damaged by Hurricane Katrina (and later Rita), this index focuses primarily on progress in the New Orleans metropolitan area. Comparable data on the individual parishes in Louisiana or individual counties in Mississippi are either not available or difficult to track down.

Because rebuilding involves many different dimensions, we would like to invite any organization or government to share with us additional data that may be useful to this project. In the coming months, we fully expect to extend the length and comprehensiveness of this index.

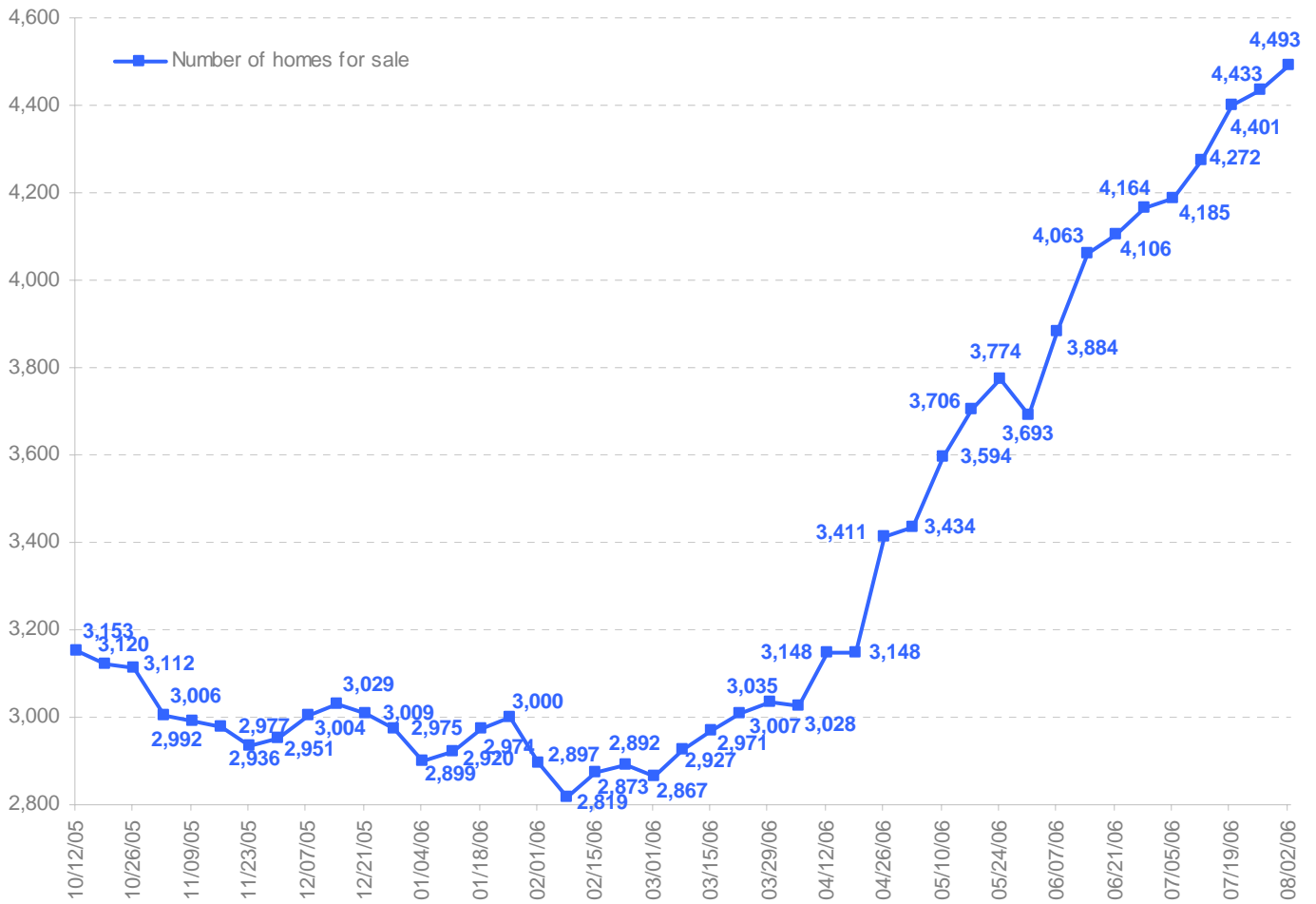
At the same time, two local sources of data provide excellent, additional perspectives that should be taken into account when evaluating the rebuilding progress in the New Orleans area. The first, www.nola.com, has accumulated a vast archive of personal stories published by both displaced families and residents who have returned to the area. The second, the Greater New Orleans Data Center (www.gnocdc.org/) has accumulated excellent, neighborhood level data and will also be releasing information about displaced families. Both are terrific resources that complement the data presented in this index.

We would like to thank Michael O'Hanlon, our colleague here at Brookings. His "Iraq Index", which measures progress made in rebuilding Iraq, was the inspiration for this index. For more information, please refer to <http://www.brookings.edu/iraqindex>.

We would also like to thank *Living Cities, Inc.: The National Community Development Initiative* for its generous support of our work related to Gulf Coast recovery. *Living Cities* is a partnership of leading foundations, financial institutions, nonprofit organizations, and the federal government committed to improving the vitality of cities and urban communities. Living Cities supports the work of community development organizations in 23 cities and uses the lessons of that work to engage in national research and policy development. Visit Living Cities on the web at www.livingcities.org.

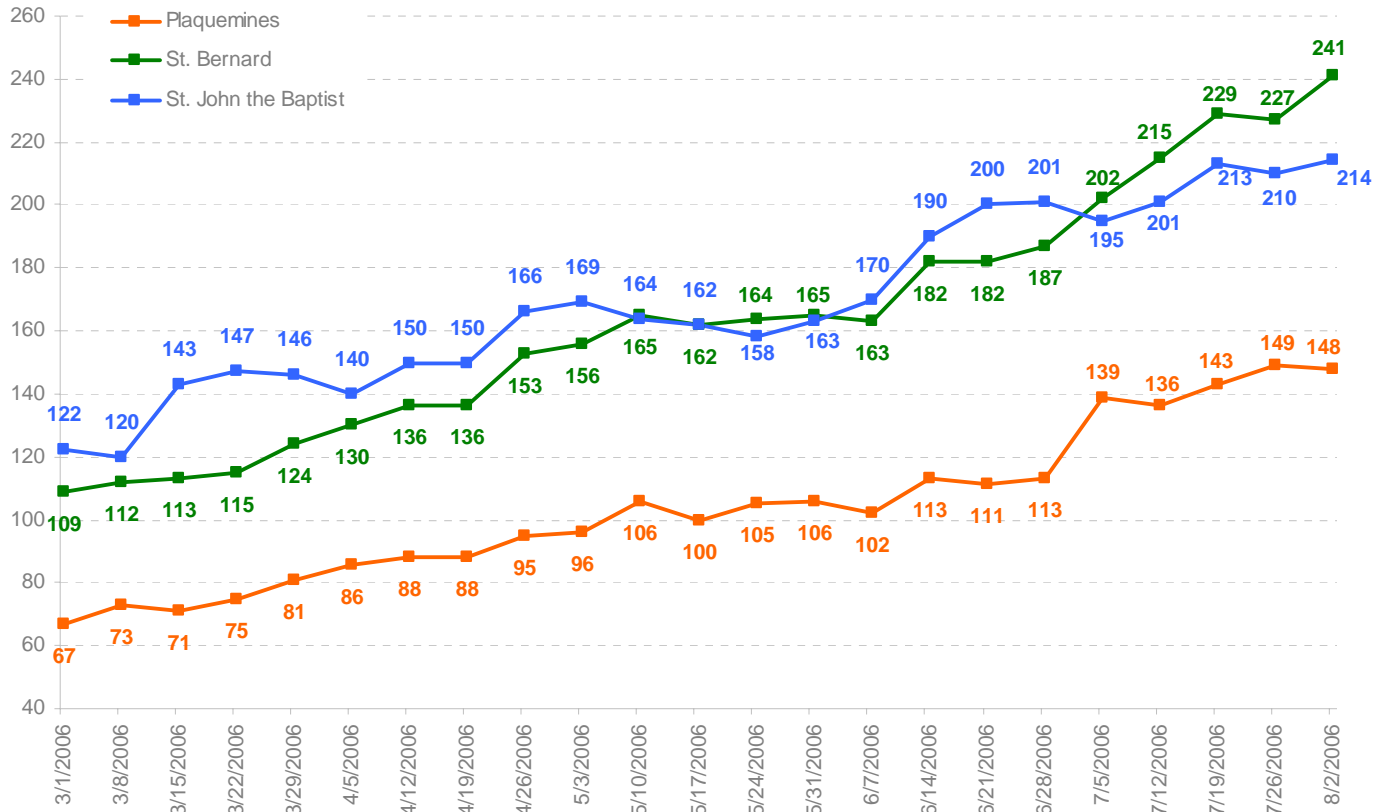
II. KEY TRACKING FIGURES

Figure 1. Number of homes for sale in Orleans Parish



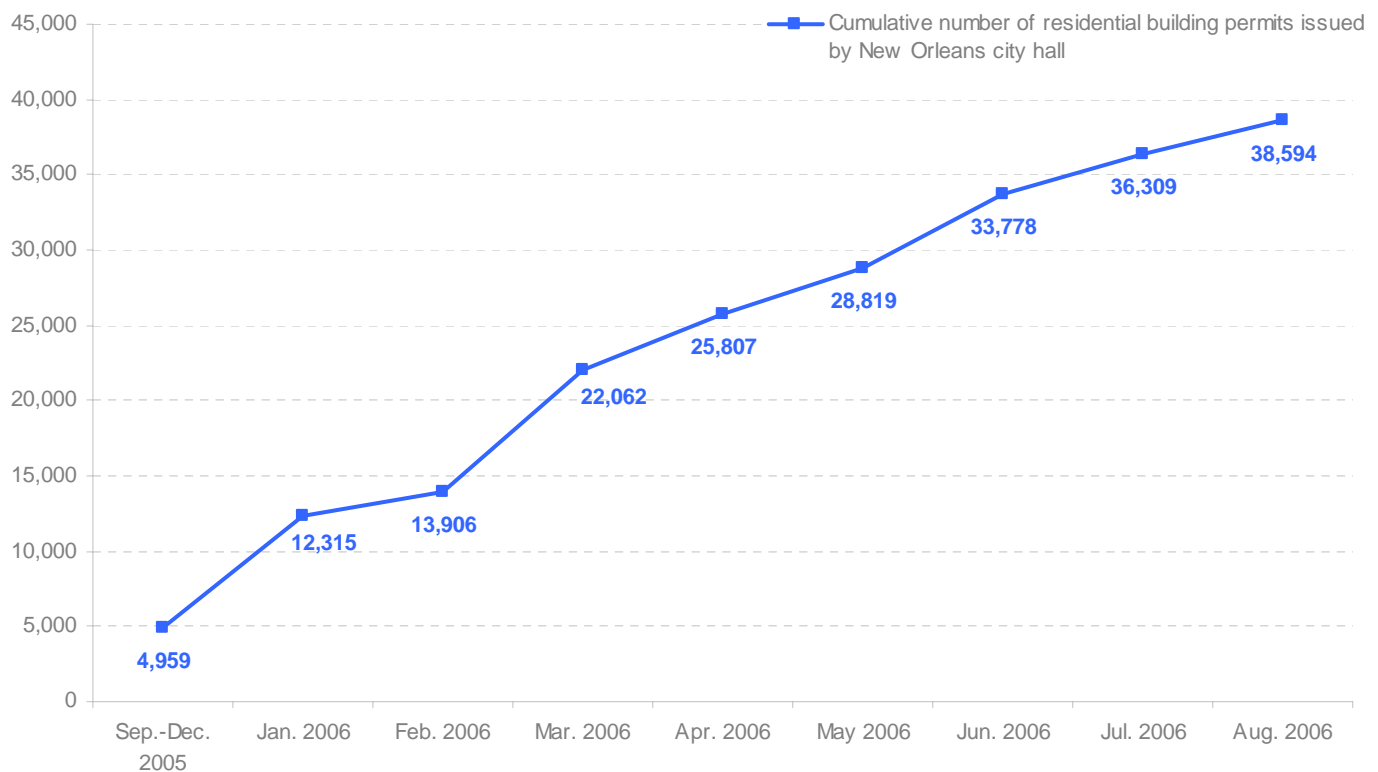
Source: Brookings Institution analysis of data from Louisiana Realtors Association

Figure 2. Number of homes for sale in Plaquemines, St. Bernard, and St. John the Baptist Parishes



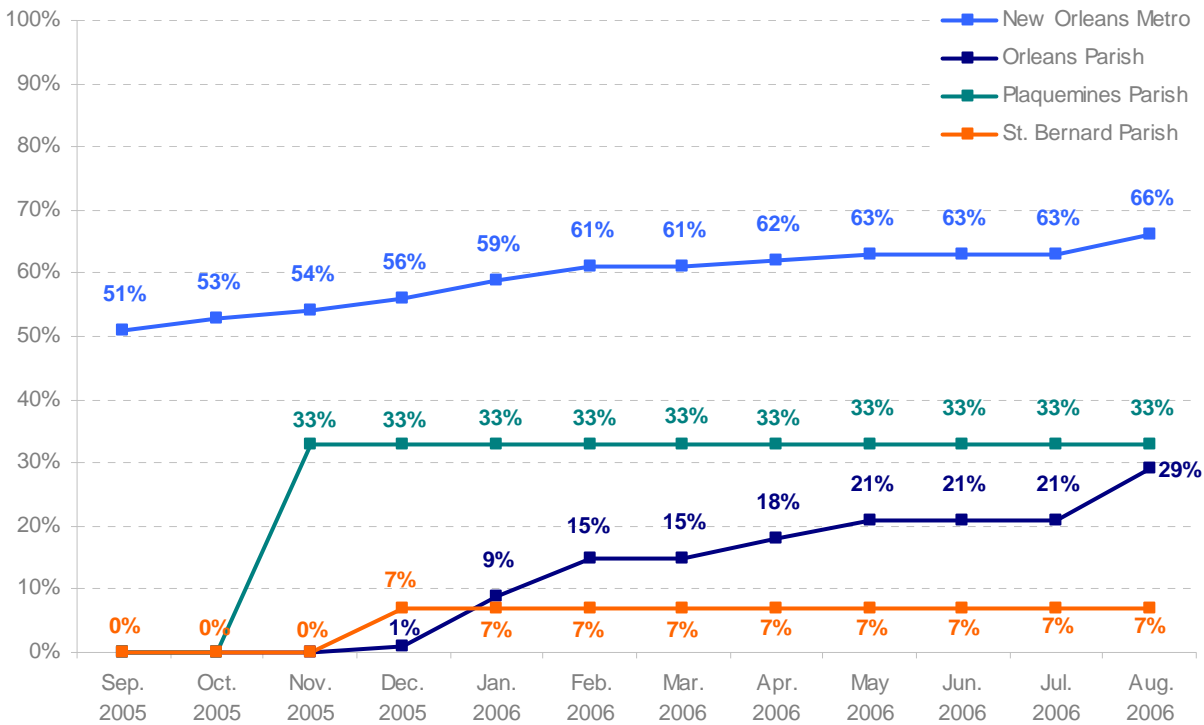
Source: Brookings Institution analysis of data from Louisiana Realtors Association

Figure 3. Cumulative number of residential building permits issued by New Orleans city hall



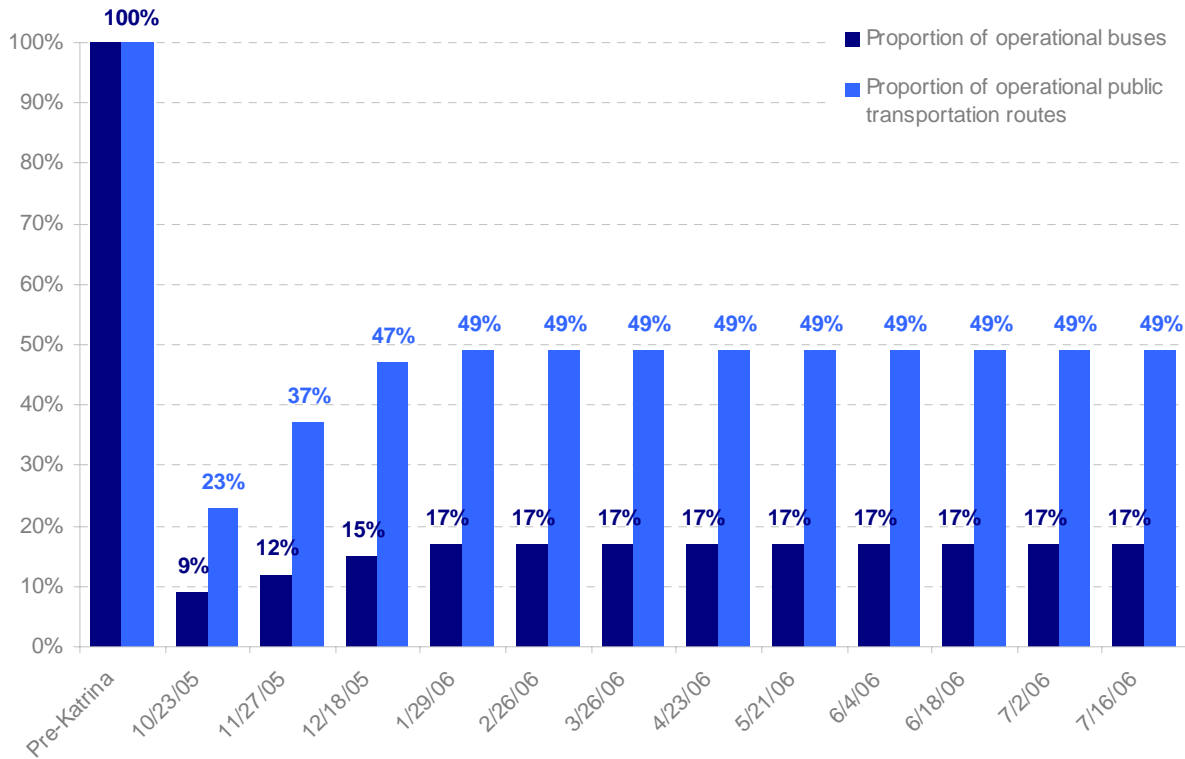
Source: Brookings Institution analysis of data from New Orleans City Hall

Figure 4. Proportion of open schools in New Orleans metro and select parishes



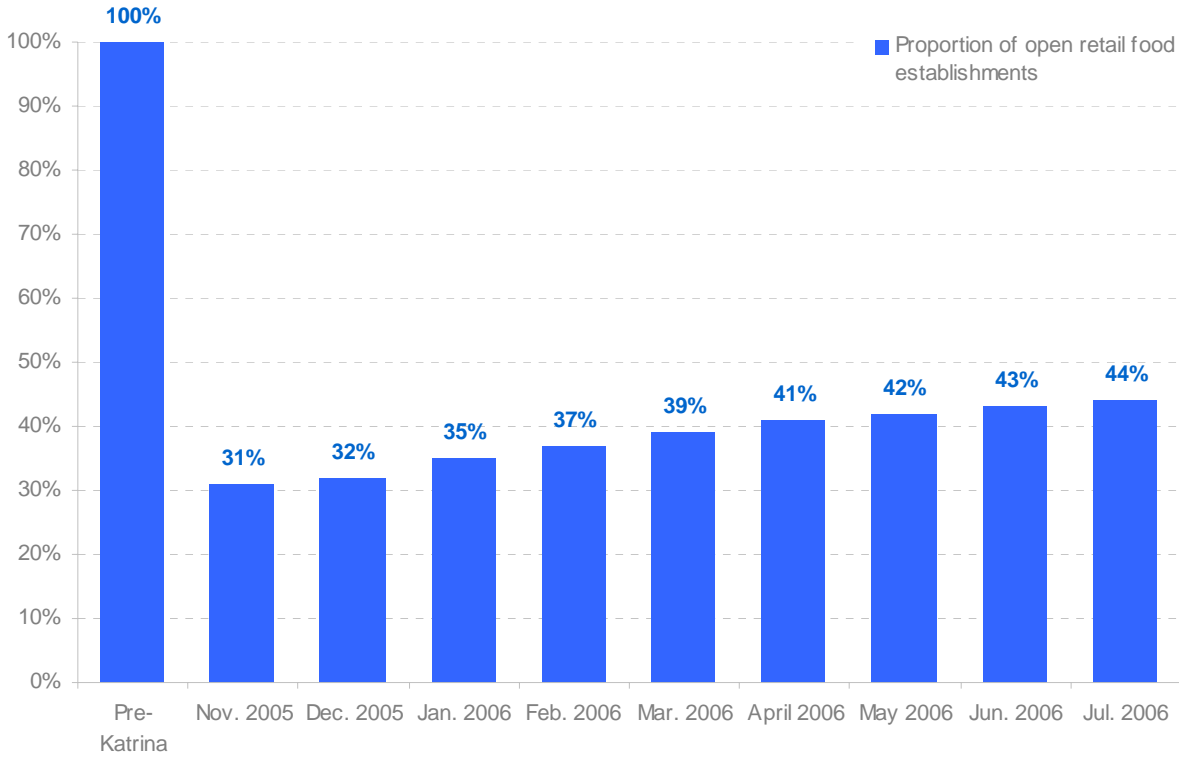
Source: Brookings Institution analysis of data from the Louisiana Department of Education, Orleans Parish Schools, and Plaquemines Parish Schools

Figure 5. Proportion of operational public transportation routes and buses in New Orleans metro



Source: Brookings Institution analysis of data from the New Orleans Regional Transit Authority

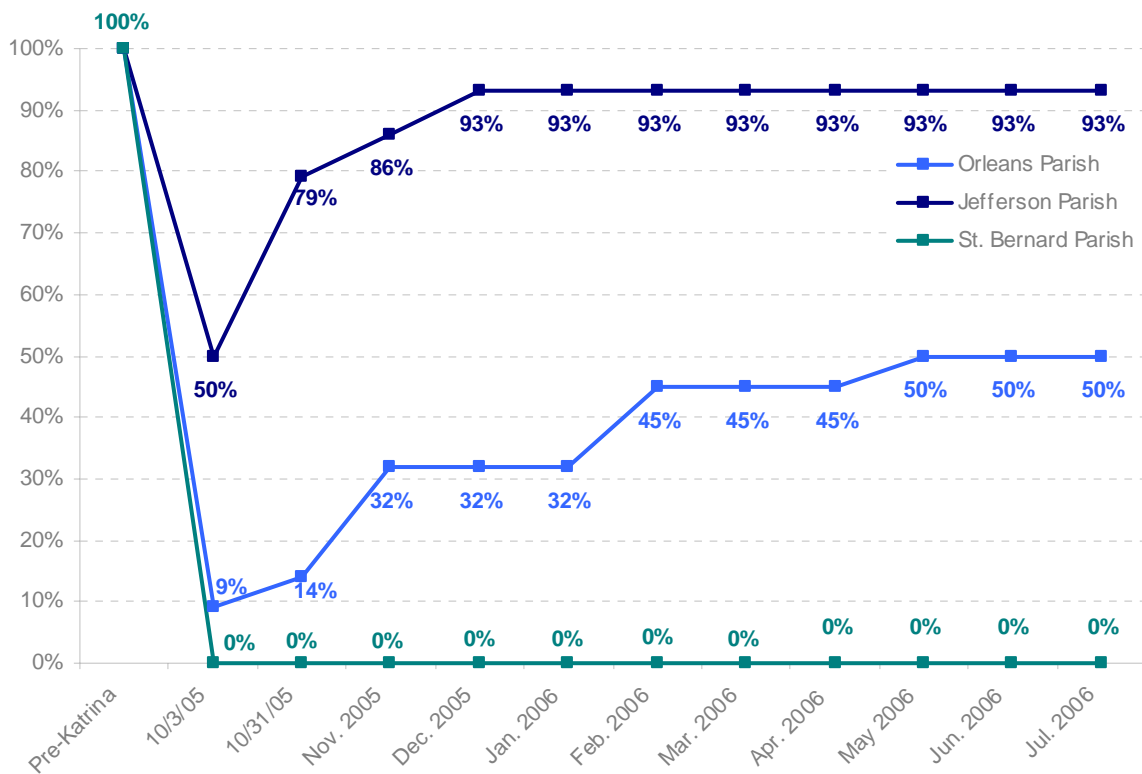
Figure 6. Proportion of open retail food establishments in New Orleans metro



Note: The Louisiana Restaurant Association defines the New Orleans metro to include Orleans, Jefferson, and St. Bernard parishes; these data reflect the proportion of open retail food establishments in these places only.

Source: Brookings Institution analysis of data from the Louisiana Restaurant Association

Figure 7. Proportion of major hospitals in operation in select parishes in New Orleans metro



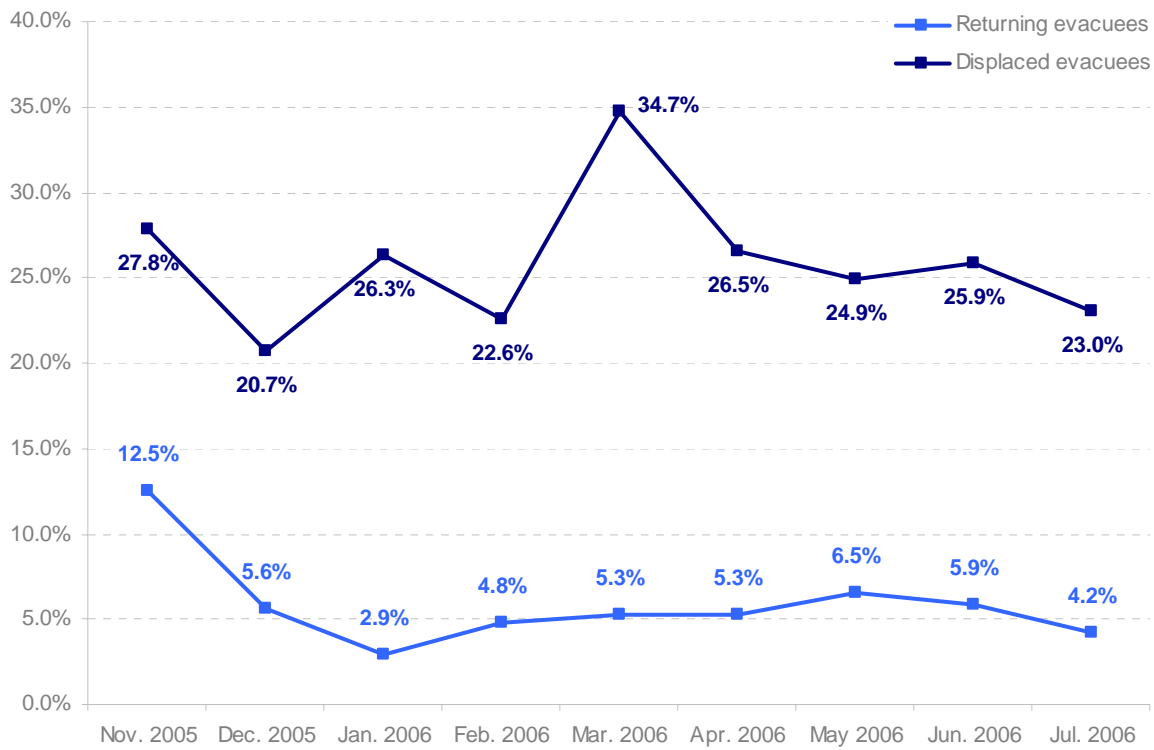
Source: Brookings Institution analysis of data from the Louisiana Hospital Association

Figure 8. Proportion of open hotels and bed and breakfasts in New Orleans city

(Temporarily unavailable)

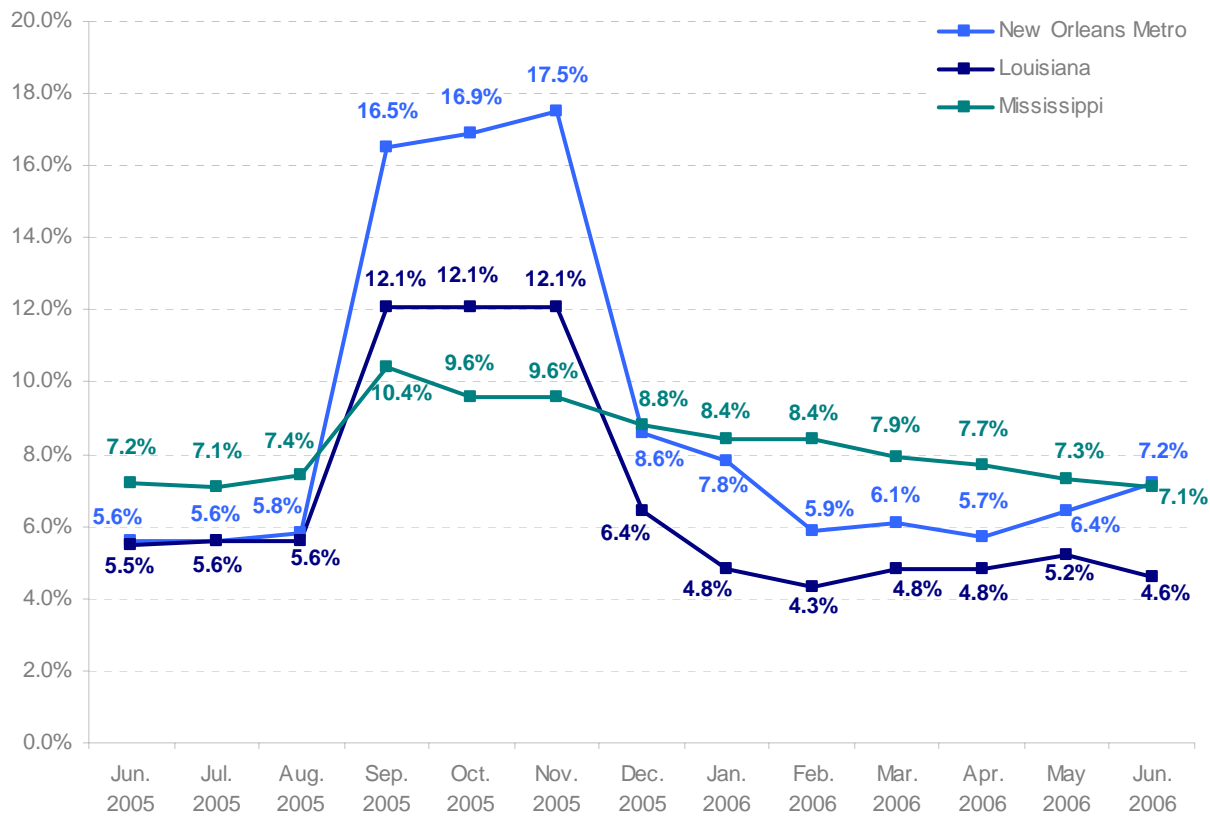
Note: Due to a recently discovered reporting lag, we have decided to discard the historical data obtained from our former source. We are now working with area hotels directly to deliver the correct numbers in the next Index release.

Figure 9. Unemployment rates for returning and displaced evacuees



Source: Brookings Institution analysis of data from the U.S. Bureau of Labor Statistics

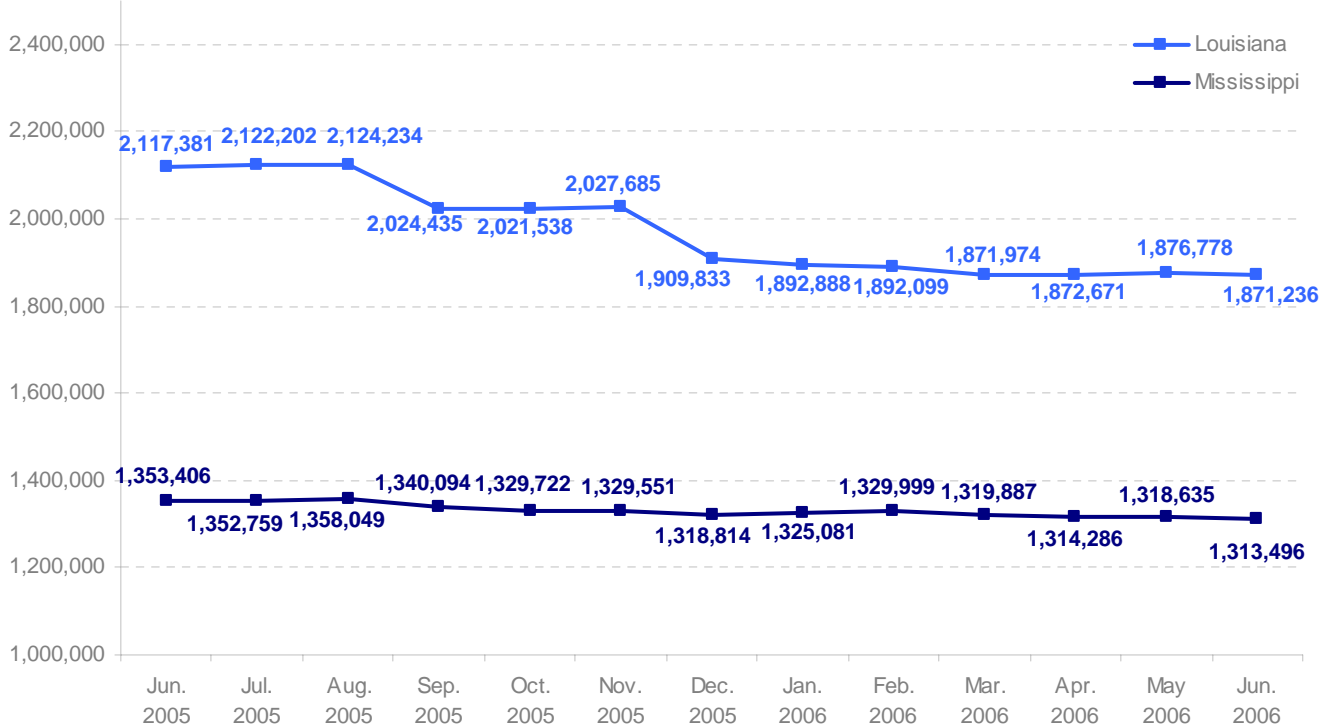
Figure 10. Unemployment rates in New Orleans metro, Louisiana, and Mississippi



Note: Metro numbers are not seasonally adjusted.

Source: Brookings Institution analysis of data from the U.S. Bureau of Labor Statistics

Figure 11. Labor force size in Louisiana and Mississippi



Source: Brookings Institution analysis of data from the U.S. Bureau of Labor Statistics

III. ECONOMIC INDICATORS

Table 1. Number of Unemployment Claims

Week	Level of Geography				
	<u>Orleans Parish</u>	<u>New Orleans Metro Area</u>	<u>Louisiana</u>	<u>Mississippi</u>	<u>United States</u>
8/13/05	288	779	2,936	2,194	257,151
9/3/05	Not available		8,469	1,605	271,613
9/10/05	Not available		58,134	6,782	322,325
9/17/05	1,374	9,389	73,702	17,493	346,039
9/24/05	Not available		39,530	21,215	292,262
10/1/05	Not available		48,110	13,861	313,847
10/8/05	Not available		52,087	13,860	380,093
10/15/05	185	1,846	27,801	6,524	303,158
10/22/05	Not available		17,486	5,485	304,733
10/29/05	Not available		16,009	4,442	294,376
11/5/05	Not available		27,335	4,464	340,491
11/12/05	65	658	9,711	3,072	283,564
11/19/05	Not available		11,789	3,797	368,859
11/26/05	Not available		7,218	2,824	290,730
12/3/05	Not available		6,459	4,800	444,600
12/10/05	Not available		3,272	2,567	391,961
12/17/05	80	355	2,874	2,928	359,108
12/24/05	Not available		2,982	3,495	433,397
12/31/05	Not available		2,487	2,701	475,889
1/7/06	Not available		3,905	4,523	555,114
1/14/06	136	602	4,409	2,615	439,873
1/21/06	Not available		2,813	2,020	317,926
1/28/06	Not available		3,232	2,246	318,805
2/4/06	Not available		2,541	2,264	321,527
2/11/06	Not available		2,157	1,983	310,078
2/18/06	79	280	1,898	1,933	269,571
2/25/06	Not available		2,428	1,874	272,478
3/4/06	Not available		2,136	2,081	301,867
3/11/06	Not available		2,109	1,945	294,764
3/18/06	88	333	2,104	2,625	269,237
3/25/06	Not available		2,171	1,875	265,370
4/1/06	Not available		2,046	1,781	253,985
4/8/06	Not available		2,422	2,419	314,696
4/15/06	73	275	1,747	1,973	268,472
4/22/06	Not available		2,551	1,939	291,349
4/29/06	Not available		2,550	2,000	279,715
5/6/06	Not available		2,322	2,761	284,635
5/13/06	111	424	2,627	3,279	288,972
5/20/06	Not available		2,453	3,501	277,168
5/27/06	Not available		2,822	4,519	292,714
6/3/06	Not available		3,878	2,756	260,263
6/10/06	Not available		3,624	2,764	285,892
6/17/06	96	352	2,672	1,958	277,173

(continued)

Table 1. Number of Unemployment Claims (continued)

Week	Level of Geography				
	<u>Orleans Parish</u>	<u>New Orleans Metro Area</u>	<u>Louisiana</u>	<u>Mississippi</u>	<u>United States</u>
6/24/06	Not available		3,036	2,456	287,548
7/1/06	Not available		3,176	3,848	304,638
7/8/06	Not available		2,621	3,355	418,363
7/15/06	Next available: 8/25/2006		3,921	2,901	Next available: 8/2006
7/22/06	Not available		3,960	2,595	Next available: 8/2006
7/29/06	Not available		Next available: 8/2006		Next available: 8/2006

Notes: Cell entries reflect the number of unemployment claims filed during the previous week; data for Orleans Parish and New Orleans Metro are recorded only once each month.

Sources: Louisiana Department of Labor; Office of Workforce Security, Employment & Training Administration, U.S. Department of Labor

Table 2. Unemployment Rates for Returning and Displaced Evacuees

Month	<u>Returning Evacuees</u>	<u>Displaced Evacuees</u>
11/05	12.5%	27.8%
12/05	5.6%	20.7%
1/06	2.9%	26.3%
2/06	4.8%	22.6%
3/06	5.3%	34.7%
4/06	5.3%	26.5%
5/06	6.5%	24.9%
6/06	5.9%	25.9%
7/06	4.2%	23.0%
8/06	Next available: 9/2006	

Source: U.S. Bureau of Labor Statistics

Table 3. Unemployment Rates, by Geography

Month	Level of Geography				
	Orleans Parish	New Orleans Metro Area	Louisiana	Mississippi	United States
6/05	6.5% (13,524)	5.6% (35,605)	5.5% (117,022)	7.2% (97,770)	5.0% (7,486,000)
7/05	6.5% (13,731)	5.6% (36,003)	5.6% (119,219)	7.1% (96,160)	5.0% (7,497,000)
8/05	6.8% (14,159)	5.8% (36,824)	5.6% (119,774)	7.4% (100,353)	4.9% (7,367,000)
9/05	Not available	16.5% (77,639) (ns)	12.1% (244,308)	10.4% (139,438)	5.1% (7,648,000)
10/05	Not available	16.9% (72,229) (ns)	12.1% (244,239)	9.6% (127,754)	4.9% (7,418,000)
11/05	Not available	17.5% (82,298) (ns)	12.1% (244,395)	9.6% (127,350)	5.0% (7,572,000)
12/05	Not available	8.6% (37,120) (ns)	6.4% (121,355)	8.8% (116,181)	4.9% (7,375,000)
1/06	Not available	7.8% (33,275) (ns)	4.8% (91,658)	8.4% (111,404)	4.7% (7,040,000)
2/06	Possibly available	5.9% (25,170) (ns)	4.3% (82,284)	8.4% (112,107)	4.8% (7,193,000)
3/06	Possibly available	6.1% (26,197) (ns)	4.8% (89,252)	7.9% (104,847)	4.7% (7,081,000)
4/06	Possibly available	5.7% (24,077) (ns)	4.8% (90,063)	7.7% (101,022)	4.7% (7,123,000)
5/06	Possibly available	6.4% (27,518) (ns)	5.2% (98,475)	7.3% (95,667)	4.6% (7,015,000)
6/06	Possibly available	7.2% (32,198) (ns)	4.6% (86,331)	7.1% (92,879)	4.6% (6,957,000)
7/06	Possibly available	Next available: 8/30/2006	Next available: 8/18/2006		4.8% (7,205,000)
8/06	Possibly available	Next available: 9/27/2006	Next available: 9/20/2006		Next available: 9/1/2006

Notes: Number in parenthesis refers to the total number of unemployed workers. Note that numbers from Orleans Parish are no longer available because LOIS has pulled these data from their webpage due to problems with the sample size. In future months we hope to include these data again. (p): preliminary; (ns): not seasonally adjusted. Sources: Louisiana Department of Labor; U.S. Bureau of Labor Statistics

Table 4. Labor Force Size

Month	Level of Geography				
	<u>Orleans Parish</u>	<u>New Orleans Metro Area</u>	<u>Louisiana</u>	<u>Mississippi</u>	<u>United States</u>
6/05	209,573	640,271	2,117,381	1,353,406	149,243,000
7/05	210,153	641,820	2,122,202	1,352,759	149,605,000
8/05	207,658	633,759	2,124,234	1,358,049	149,792,000
9/05	Not available	470,335 (ns)	2,024,435	1,340,094	150,083,000
10/05	Not available	469,941 (ns)	2,021,538	1,329,722	150,043,000
11/05	Not available	470,608 (ns)	2,027,685	1,329,551	150,183,000
12/05	Not available	431,469 (ns)	1,909,833	1,318,814	150,153,000
1/06	Not available	426,833 (ns)	1,892,888	1,325,081	150,114,000
2/06	Possibly available	429,469 (ns)	1,892,099	1,329,999	150,449,000
3/06	Possibly available	427,579 (ns)	1,871,974	1,319,887	150,652,000
4/06	Possibly available	425,723 (ns)	1,872,671	1,314,286	150,811,000
5/06	Possibly available	432,016 (ns)	1,876,778	1,318,635	150,991,000
6/06	Possibly available	444,153 (ns)	1,871,236	1,313,496	151,321,000
7/06	Possibly available	Next available: 8/30/2006	Next available: 8/18/2006		151,534,000
8/06	Possibly available	Next available: 9/27/2006	Next available: 9/20/2006		Next available: 9/1/2006

Notes: Note that numbers from Orleans Parish are no longer available because LOIS has pulled these data from their webpage due to problems with the sample size. In future months we hope to include these data again. (p): preliminary; (ns): not seasonally adjusted.

Sources: Louisiana Department of Labor; U.S. Bureau of Labor Statistics, U.S. Department of Labor

Table 5a. Number of Non-farm Employed People in New Orleans Metro, Louisiana, Mississippi, and the U.S., by Industry: Totals

Month	Type of Industry		Source of Industry		Total Non-farm Employment
	Total Goods Producing	Total Service Providing	Total Private	Total Government	
6/05					
New Orleans Metro	77,400 (ns) (12.5%)	541,600 (ns) (87.5%)	514,100 (ns) (83.1%)	104,900 (ns) (16.9%)	619,000 (ns)
Louisiana	316,200 (16.4%)	1,618,500 (83.7%)	1,553,300 (80.3%)	381,500 (19.7%)	1,933,600
Mississippi	240,500 (ns) (21.1%)	897,800 (ns) (79.0%)	895,200 (ns) (78.8%)	246,000 (21.6%)	1,136,500
U.S.	22,134,000 (16.6%)	111,454,000 (83.4%)	111,659,000 (83.6%)	21,760,000 (16.3%)	133,588,000
7/05					
New Orleans Metro	77,200 (ns) (12.7%)	533,000 (ns) (87.3%)	507,200 (ns) (83.1%)	103,000 (ns) (16.9%)	610,200 (ns)
Louisiana	311,000 (16.1%)	1,606,900 (83.3%)	1,546,400 (80.1%)	379,600 (19.7%)	1,930,100
Mississippi	240,400 (ns) (21.1%)	890,000 (ns) (78.3%)	894,400 (ns) (78.7%)	244,800 (21.5%)	1,136,100
U.S.	22,134,000 (16.5%)	111,731,000 (83.5%)	112,048,000 (83.7%)	21,817,000 (16.3%)	133,865,000
8/05					
New Orleans Metro	77,100 (ns) (12.6%)	533,100 (ns) (87.4%)	506,800 (ns) (83.1%)	103,400 (ns) (16.9%)	610,200 (ns)
Louisiana	311,800 (16.1%)	1,609,100 (83.1%)	1,549,200 (80.0%)	383,900 (19.8%)	1,935,600
Mississippi	240,100 (ns) (21.1%)	895,200 (ns) (78.8%)	893,700 (ns) (78.6%)	245,900 (21.6%)	1,136,700
U.S.	22,159,000 (16.5%)	111,854,000 (83.5%)	112,164,000 (83.7%)	21,849,000 (16.3%)	134,013,000
9/05					
New Orleans Metro	48,800 (ns) (12.0%)	356,700 (ns) (88.0%)	305,500 (ns) (75.3%)	100,000 (ns) (24.7%)	405,500 (ns)
Louisiana	272,300 (16.1%)	1,425,300 (84.1%)	1,319,700 (77.8%)	378,500 (22.3%)	1,695,600
Mississippi	229,100 (ns) (21.1%)	857,600 (ns) (79.1%)	843,500 (ns) (77.8%)	242,600 (22.4%)	1,084,400
U.S.	22,164,000 (16.5%)	111,866,000 (83.5%)	112,174,000 (83.7%)	21,856,000 (16.3%)	134,030,000
10/05					
New Orleans Metro	51,600 (ns) (13.1%)	343,500 (ns) (86.9%)	296,900 (ns) (75.1%)	98,200 (ns) (24.9%)	395,100 (ns)
Louisiana	275,200 (16.1%)	1,435,600 (84.4%)	1,328,700 (78.1%)	377,900 (22.2%)	1,700,400
Mississippi	233,800 (ns) (21.3%)	867,300 (ns) (79.1%)	856,300 (78.2%)	241,600 (22.0%)	1,095,700
U.S.	22,218,000 (p) (16.6%)	111,856,000 (p) (83.4%)	112,233,000 (p) (83.7%)	21,851,000 (p) (16.3%)	134,074,000 (p)

(continued on next page)

Table 5a. Number of Non-farm Employed People in New Orleans Metro, Louisiana, Mississippi, and the U.S., by Industry: Totals (continued)

Month	Type of Industry		Source of Industry		Total Non-farm Employment
	Total Goods Producing	Total Service Providing	Total Private	Total Government	
11/05					
New Orleans Metro	54,600 (ns) (13.5%)	349,500 (ns) (86.5%)	306,800 (ns) (75.9%)	97,300 (ns) (24.1%)	404,100 (ns)
Louisiana	278,700 (16.3%)	1,445,800 (84.5%)	1,342,600 (78.5%)	376,600 (22.0%)	1,710,000
Mississippi	233,800 (ns) (21.1%)	878,000 (ns) (79.4%)	866,600 (ns) (78.3%)	242,200 (21.9%)	1,105,600
U.S.	22,268,000 (p) (16.6%)	112,021,000 (p) (83.4%)	112,417,000 (p) (83.7%)	21,872,000 (p) (16.3%)	134,289,000 (p)
12/05					
New Orleans Metro	54,700 (ns) (13.4%)	353,800 (ns) (86.6%)	315,000 (ns) (77.1%)	93,500 (ns) (22.9%)	408,500 (ns)
Louisiana	293,600 (ns) (16.9%)	1,457,000 (ns) (83.8%)	1,372,900 (ns) (79.0%)	374,800 (21.6%)	1,738,900
Mississippi	239,000 (21.2%)	891,300 (79.1%)	887,100 (78.8%)	241,200 (21.4%)	1,126,200
U.S.	22,273,000 (p) (16.6%)	112,098,000 (p) (83.4%)	112,496,000 (p) (83.7%)	21,802,000 (p) (16.2%)	134,371,000 (p)
1/06					
New Orleans Metro	55,000 (ns) (13.4%)	355,200 (ns) (86.6%)	317,500 (ns) (77.4%)	92,700 (ns) (22.6%)	410,200 (ns)
Louisiana	290,200 (16.6%)	1,444,000 (82.6%)	1,362,100 (77.9%)	375,300 (21.5%)	1,747,700
Mississippi	238,100 (21.0%)	883,700 (78.0%)	879,700 (77.6%)	241,600 (21.3%)	1,133,000
U.S.	22,231,000 (p) (16.5%)	112,233,000 (p) (83.4%)	112,960,000 (p) (83.9%)	21,775,000 (p) (16.2%)	134,564,000 (p)
2/06					
New Orleans Metro	57,200 (p,ns) (13.6%)	363,400 (p,ns) (86.4%)	329,200 (p,ns) (78.3%)	91,400 (ns) (21.7%)	420,600 (p,ns)
Louisiana	292,300 (p) (16.6%)	1,461,200 (p) (83.0%)	1,377,600 (p) (78.3%)	372,400 (p) (21.2%)	1,760,500 (p)
Mississippi	238,000 (p) (21.0%)	890,100 (p) (78.4%)	884,800 (p) (77.9%)	241,200 (p) (21.2%)	1,135,400 (p)
U.S.	22,392,000 (p) (16.6%)	112,397,000 (p) (83.4%)	112,904,000 (p) (83.8%)	21,885,000 (p) (16.2%)	134,789,000 (p)
3/06					
New Orleans Metro	57,500 (p,ns) (13.5%)	367,700 (p,ns) (86.5%)	333,600 (p,ns) (78.5%)	91,600 (p,ns) (21.5%)	425,200 (p,ns)
Louisiana	296,000 (p) (16.8%)	1,471,500 (p) (83.4%)	1,391,700 (p) (78.8%)	371,800 (p) (21.1%)	1,765,000 (p)
Mississippi	240,400 (p) (21.1%)	896,700 (p) (78.7%)	892,800 (p) (78.4%)	242,500 (p) (21.3%)	1,139,200 (p)
U.S.	22,375,000 (p) (16.6%)	112,591,000 (p) (83.4%)	113,063,000 (p) (83.8%)	21,903,000 (p) (16.2%)	134,966,000 (p)
4/06					
New Orleans Metro	56,900 (p,ns) (13.4%)	367,500 (p,ns) (86.6%)	333,400 (p,ns) (78.6%)	91,100 (p,ns) (21.5%)	424,400 (p,ns)
Louisiana	297,800 (p) (16.9%)	1,467,300 (p) (83.3%)	1,391,300 (p) (79.1%)	370,100 (p) (21.0%)	1,759,500 (p)

(continued on next page)

Table 5a. Number of Non-farm Employed People in New Orleans Metro, Louisiana, Mississippi, and the U.S., by Industry: Totals (continued)

Month	Type of Industry		Source of Industry		Total Non-farm Employment	
	Total Goods Producing	Total Service Providing	Total Private	Total Government		
4/06						
	Mississippi	239,700 (p) (21.1%)	898,300 (p) (79.3%)	894,000 (p) (78.9%)	242,600 (p) (21.4%)	1,133,400 (p)
	U.S.	22,425,000 (p) (16.6%)	112,643,000 (p) (83.3%)	113,164,000 (p) (83.8%)	21,904,000 (p) (16.2%)	135,068,000 (p)
5/06						
	New Orleans Metro	58,400 (p,ns) (13.6%)	371,300 (p,ns) (86.4%)	339,000 (p,ns) (78.9%)	90,700 (p,ns) (21.1%)	429,700 (p,ns)
	Louisiana	299,400 (p) (16.9%)	1,475,400 (p) (83.3%)	1,403,300 (p) (79.3%)	368,800 (p) (20.8%)	1,769,100 (p)
	Mississippi	240,900 (p) (21.2%)	897,400 (p) (79.1%)	894,200 (p) (78.8%)	244,900 (p) (21.6%)	1,134,500 (p)
	U.S.	22,416,000 (p) (16.6%)	112,690,000 (p) (83.4%)	113,190,000 (p) (83.8%)	21,916,000 (p) (16.2%)	135,106,000 (p)
6/06						
	New Orleans Metro	57,900 (p,ns) (13.3%)	377,300 (p,ns) (86.7%)	343,600 (p,ns) (79.0%)	91,600 (p,ns) (21.0%)	435,200 (p,ns)
	Louisiana	301,500 (p,ns) (17.0%)	1,473,900 (p,ns) (83.0%)	1,407,600 (p,ns) (79.3%)	367,800 (p,ns) (20.7%)	1,775,400 (p,ns)
	Mississippi	241,700 (p,ns) (21.3%)	893,000 (p,ns) (78.7%)	894,200 (p,ns) (78.8%)	240,500 (p,ns) (21.2%)	1,134,700 (p,ns)
	U.S.	22,431,000 (p) (16.6%)	112,799,000 (p) (83.4%)	113,263,000 (p) (83.8%)	21,967,000 (p) (16.2%)	135,230,000 (p)
7/06						
	New Orleans Metro			Next available: 8/30/2006		
	Louisiana			Next available: 8/18/2006		
	Mississippi			Next available: 8/18/2006		
	U.S.			Next available: 8/4/2006		

Notes: Numbers in parentheses refer to percentage of total non-farm employment represented by occupation; (p): preliminary; (ns): not seasonally adjusted.

Sources: Louisiana Department of Labor; U.S. Bureau of Labor Statistics, U.S. Department of Labor

Table 5b. Number of Non-farm Employed People in New Orleans Metro, Louisiana, Mississippi, and the U.S., by Industry: Service Providing Industries

Month	Industry						
	<u>Trade, Transportation and Utilities</u>	<u>Information</u>	<u>Financial Activities</u>	<u>Professional and Business Services</u>	<u>Education and Health Services</u>	<u>Leisure and Hospitality</u>	<u>Other Services</u>
6/05							
New Orleans Metro	124,000 (ns) (20.0 %)	9,800 (ns) (1.6%)	33,200 (ns) (5.4%)	75,100 (ns) (12.1%)	83,200 (ns) (13.4%)	88,800 (ns) (14.3%)	22,600 (ns) (3.7%)
Louisiana	383,400 (19.8%)	28,800 (1.5%)	104,500 (5.4%)	186,300 (9.6%)	250,600 (13.0%)	210,400 (10.9%)	73,100 (3.8%)
Mississippi	223,200 (19.6%)	14,600 (1.3%)	46,900 (4.1%)	84,900 (7.5%)	119,700 (10.5%)	125,900 (11.1%)	38,000 (3.3%)
U.S.	25,854,000 (19.4%)	3,146,000 (2.4%)	8,208,000 (6.1%)	16,906,000 (12.7%)	17,336,000 (13.0%)	12,765,000 (9.6%)	5,479,000 (4.1%)
7/05							
New Orleans Metro	123,200 (ns) (20.2%)	10,100 (ns) (1.7%)	33,400 (ns) (5.5%)	74,200 (ns) (12.2%)	79,900 (ns) (13.1%)	86,500 (ns) (14.2%)	22,700 (ns) (3.7%)
Louisiana	384,000 (20.0%)	28,200 (1.5%)	104,600 (5.4%)	182,800 (9.5%)	256,000 (13.3%)	207,600 (10.8%)	72,200 (3.8%)
Mississippi	223,300 (19.7%)	14,500 (1.3%)	46,800 (4.1%)	86,300 (7.6%)	119,100 (10.5%)	125,300 (11.1%)	37,800 (3.3%)
U.S.	25,922,000 (19.4%)	3,146,000 (2.4%)	8,227,000 (6.1%)	16,964,000 (12.7%)	17,377,000 (13.0%)	12,801,000 (9.6%)	5,477,000 (4.1%)
8/05							
New Orleans Metro	123,300 (ns) (20.2%)	10,600 (ns) (1.7%)	33,700 (ns) (5.5%)	74,000 (ns) (12.1%)	79,100 (ns) (13.0%)	86,400 (ns) (14.2%)	22,600 (ns) (3.7%)
Louisiana	384,900 (19.9%)	28,700 (1.5%)	103,800 (5.4%)	183,600 (9.5%)	255,000 (13.2%)	209,100 (10.8%)	72,300 (3.7%)
Mississippi	222,500 (19.6%)	14,300 (1.3%)	46,600 (4.1%)	86,300 (7.6%)	120,600 (10.6%)	124,600 (11.0%)	37,300 (3.3%)
U.S.	25,910,000 (19.3%)	3,147,000 (2.3%)	8,248,000 (6.2%)	16,983,000 (12.7%)	17,418,000 (13.0%)	12,830,000 (9.6%)	5,469,000 (4.1%)
9/05							
New Orleans Metro	83,000 (ns) (20.5%)	8,300 (ns) (2.0%)	25,200 (ns) (6.2%)	43,700 (ns) (10.8%)	41,500 (ns) (10.2%)	46,500 (ns) (11.5%)	8,500 (ns) (2.1%)
Louisiana	340,500 (20.0%)	26,600 (1.6%)	94,400 (5.6%)	156,800 (9.8%)	208,400 (12.3%)	161,200 (9.5%)	58,600 (3.4%)
Mississippi	212,200 (19.4%)	14,200 (1.3%)	44,900 (4.1%)	81,700 (7.5%)	116,600 (10.7%)	111,500 (10.2%)	32,300 (3.0%)
U.S.	25,870,000 (19.3%)	3,153,000 (2.4%)	8,265,000 (6.2%)	17,037,000 (12.7%)	17,455,000 (13.0%)	12,762,000 (9.5%)	5,468,000 (4.1%)
10/05							
New Orleans Metro	79,300 (ns) (20.0%)	8,200 (ns) (2.1%)	23,200 (ns) (5.9%)	37,700 (ns) (9.5%)	42,100 (ns) (10.7%)	46,300 (ns) (11.7%)	8,500 (ns) (2.2%)
Louisiana	335,700 (19.7%)	27,300 (1.6%)	96,100 (5.7%)	156,200 (9.2%)	211,200 (12.4%)	163,100 (9.6%)	61,300 (3.6%)
Mississippi	212,700 (19.4%)	14,000 (1.3%)	44,800 (4.1%)	85,400 (7.8%)	119,700 (10.9%)	111,500 (10.2%)	33,500 (3.1%)
U.S.	25,880,000 (p) (19.3%)	3,140,000 (p) (2.3%)	8,292,000 (p) (6.2%)	17,043,000 (p) (12.7%)	17,445,000 (p) (13.0%)	12,748,000 (p) (9.5%)	5,457,000 (p) (4.1%)

(continued on next page)

Table 5b. Number of Non-farm Employed People in New Orleans Metro, Louisiana, Mississippi, and the U.S., by Industry: Service Providing Industries (continued)

Month	Industry						
	<u>Trade, Transportation and Utilities</u>	<u>Information</u>	<u>Financial Activities</u>	<u>Professional and Business Services</u>	<u>Education and Health Services</u>	<u>Leisure and Hospitality</u>	<u>Other Services</u>
11/05							
New Orleans Metro	83,200 (ns) (20.6%)	8,300 (ns) (2.1%)	24,600 (ns) (6.1%)	38,000 (ns) (9.4%)	41,300 (ns) (10.2%)	48,100 (ns) (11.9%)	8,700 (ns) (2.2%)
Louisiana	342,800 (20.0%)	27,500 (1.6%)	96,700 (5.7%)	156,400 (9.1%)	208,800 (12.2%)	162,600 (9.5%)	61,600 (3.6%)
Mississippi	217,400 (19.7%)	14,200 (ns) (1.3%)	45,300 (ns) (4.1%)	85,200 (ns) (7.7%)	120,400 (ns) (10.9%)	113,400 (10.3%)	34,600 (ns) (3.1%)
U.S.	25,909,000 (p) (19.3%)	3,143,000 (p) (2.3%)	8,305,000 (p) (6.2%)	17,072,000 (p) (12.7%)	17,481,000 (p) (13.0%)	12,777,000 (p) (9.5%)	5,462,000 (p) (4.1%)
12/05							
New Orleans Metro	85,900 (ns) (21.0%)	8,100 (ns) (2.0%)	24,800 (ns) (6.1%)	39,900 (ns) (9.8%)	41,800 (ns) (10.2%)	51,000 (ns) (12.5%)	8,800 (ns) (2.2%)
Louisiana	352,800 (20.3%)	28,500 (1.6%)	93,200 (5.4%)	162,900 (9.4%)	208,000 (12.0%)	168,600 (9.7%)	58,000 (3.3%)
Mississippi	222,300 (19.7%)	13,900 (ns) (1.2%)	46,200 (ns) (4.1%)	89,500 (7.9%)	122,200 (10.9%)	113,400 (10.0%)	37,500 (3.3%)
U.S.	26,018,000 (p) (19.4%)	3,066,000 (p) (2.3%)	8,224,000 (p) (6.1%)	17,129,000 (p) (12.7%)	17,503,000 (p) (13.0%)	12,896,000 (p) (9.6%)	5,387,000 (p) (4.0%)
1/06							
New Orleans Metro	86,100 (ns) (21.0%)	8,100 (ns) (2.0%)	24,700 (ns) (6.0%)	40,100 (ns) (9.8%)	41,900 (ns) (10.2%)	52,400 (ns) (12.8%)	9,200 (ns) (2.2%)
Louisiana	359,500 (20.6%)	28,900 (1.7%)	93,900 (5.4%)	162,900 (9.3%)	207,500 (11.9%)	169,800 (9.7%)	58,200 (3.3%)
Mississippi	223,800 (19.8%)	13,800 (ns) (1.2%)	46,000 (ns) (4.1%)	90,600 (8.0%)	121,800 (10.8%)	114,200 (10.1%)	38,000 (3.4%)
U.S.	26,028,000 (p) (19.3%)	3,067,000 (p) (2.2%)	8,244,000 (p) (6.1%)	17,138,000 (p) (12.7%)	17,557,000 (p) (13.0%)	12,923,000 (p) (9.6%)	5,395,000 (p) (4.0%)
2/06							
New Orleans Metro	86,800 (p,ns) (20.6%)	7,900 (p,ns) (1.9%)	24,600 (p,ns) (5.8%)	41,200 (p,ns) (9.8%)	47,300 (p,ns) (11.2%)	54,800 (p,ns) (13.0%)	9,400 (p,ns) (2.2%)
Louisiana	362,800 (p) (20.6%)	28,600 (p) (1.6%)	94,200 (p) (5.4%)	164,100 (p) (9.3%)	212,700 (p) (12.1%)	171,900 (p) (9.8%)	58,600 (p) (3.3%)
Mississippi	226,900 (p) (20.0%)	14,000 (p,ns) (1.2%)	46,200 (p,ns) (4.1%)	90,300 (p) (8.0%)	121,800 (p) (10.7%)	115,100 (p) (10.1%)	38,100 (p) (3.4%)
U.S.	26,043,000 (p) (19.3%)	3,074,000 (p) (2.3%)	8,266,000 (p) (6.1%)	17,177,000 (p) (12.7%)	17,604,000 (p) (13.1%)	12,948,000 (p) (9.6%)	5,400,000 (p) (4.0%)
3/06							
New Orleans Metro	88,400 (p,ns) (20.8%)	7,800 (p,ns) (1.8%)	24,400 (p,ns) (5.7%)	43,400 (p,ns) (10.2%)	46,900 (p,ns) (11.0%)	55,600 (p,ns) (13.1%)	9,600 (p,ns) (2.3%)
Louisiana	364,400 (p) (20.6%)	28,400 (p) (1.6%)	94,500 (p) (5.4%)	167,100 (p) (9.5%)	212,800 (p) (12.1%)	171,100 (p) (9.7%)	58,400 (p) (3.3%)
Mississippi	227,700 (p) (20.0%)	13,900 (p) (1.2%)	45,900 (p) (4.0%)	90,400 (p) (7.9%)	121,900 (p) (10.7%)	115,900 (p) (10.2%)	38,200 (p) (3.4%)
U.S.	26,100,000 (p) (19.3%)	3,076,000 (p) (2.3%)	8,281,000 (p) (6.1%)	17,214,000 (p) (12.8%)	17,616,000 (p) (13.1%)	13,004,000 (p) (9.6%)	5,397,000 (p) (4.0%)
4/06							
New Orleans Metro	88,200 (p,ns) (20.8%)	7,700 (p,ns) (1.8%)	24,200 (p,ns) (5.7%)	44,900 (p,ns) (10.6%)	45,500 (p,ns) (10.7%)	56,400 (p,ns) (13.3%)	9,600 (p,ns) (2.3%)

(continued on next page)

Table 5b. Number of Non-farm Employed People in New Orleans Metro, Louisiana, Mississippi, and the U.S., by Industry: Service Providing Industries (continued)

Month	Industry						
	<u>Trade, Transportation and Utilities</u>	<u>Information</u>	<u>Financial Activities</u>	<u>Professional and Business Services</u>	<u>Education and Health Services</u>	<u>Leisure and Hospitality</u>	<u>Other Services</u>
4/06							
Louisiana	361,300 (p) (20.5%)	28,100 (p) (1.6%)	94,300 (p) (5.4%)	168,800 (p) (9.6%)	210,100 (p) (11.9%)	170,100 (p) (9.7%)	58,500 (p) (3.3%)
Mississippi	224,800 (p) (19.8%)	14,100 (p) (1.2%)	46,100 (p) (4.1%)	90,300 (p) (8.0%)	122,600 (p) (10.8%)	115,700 (p) (10.2%)	37,900 (p) (3.3%)
U.S.	26,063,000 (p) (19.3%)	3,071,000 (p) (2.2%)	8,313,000 (p) (6.2%)	17,233,000 (p) (12.8%)	17,656,000 (p) (13.1%)	13,006,000 (p) (9.6%)	5,397,000 (p) (4.0%)
5/06							
New Orleans Metro	90,200 (p,ns) (21.0%)	7,300 (p,ns) (1.7%)	24,500 (p,ns) (5.7%)	45,300 (p,ns) (10.5%)	45,700 (p,ns) (10.6%)	57,800 (p,ns) (13.5%)	9,800 (p,ns) (2.3%)
Louisiana	364,000 (p) (20.6%)	27,400 (p) (1.5%)	94,900 (p) (5.4%)	172,200 (p) (9.7%)	212,000 (p) (12.0%)	172,500 (p) (9.8%)	58,200 (p) (3.3%)
Mississippi	226,500 (p) (20.0%)	14,000 (p) (1.2%)	45,700 (p) (4.0%)	89,400 (p) (7.9%)	122,800 (p) (10.8%)	115,800 (p) (10.2%)	37,000 (p) (3.3%)
U.S.	26,047,000 (p) (19.3%)	3,055,000 (p) (2.3%)	8,322,000 (p) (6.2%)	17,243,000 (p) (12.8%)	17,699,000 (p) (13.1%)	12,995,000 (p) (9.6%)	5,413,000 (p) (4.0%)
6/06							
New Orleans Metro	90,700 (p,ns) (20.8%)	7,600 (p,ns) (1.7%)	25,400 (p,ns) (5.8%)	47,300 (p,ns) (10.9%)	46,500 (p,ns) (10.7%)	58,200 (p,ns) (13.4%)	10,000 (p,ns) (2.3%)
Louisiana	364,000 (p,ns) (20.5%)	27,700 (p,ns) (1.6%)	96,100 (p,ns) (5.4%)	171,900 (p,ns) (9.7%)	212,100 (p,ns) (11.9%)	175,400 (p,ns) (9.9%)	58,900 (p,ns) (3.3%)
Mississippi	224,700 (p,ns) (19.8%)	13,900 (p,ns) (1.2%)	46,000 (p,ns) (4.1%)	90,600 (p,ns) (8.0%)	121,000 (p,ns) (10.7%)	119,000 (p,ns) (10.5%)	37,300 (p,ns) (3.3%)
U.S.	26,050,000 (p) (19.3%)	3,060,000 (p) (2.3%)	8,320,000 (p) (6.2%)	17,281,000 (p) (12.8%)	17,708,000 (p) (13.1%)	13,009,000 (p) (9.6%)	5,404,000 (p) (4.0%)
7/06							
New Orleans Metro	Next available: 8/30/2006						
Louisiana	Next available: 8/18/2006						
Mississippi	Next available: 8/18/2006						
U.S.	Next available: 8/4/2006						

Notes: Numbers in parentheses refer to percentage of total non-farm employment represented by occupation; (p): preliminary; (ns): not seasonally adjusted.

Sources: Louisiana Department of Labor; U.S. Bureau of Labor Statistics, U.S. Department of Labor

Table 5c. Number of Non-farm Employed People in New Orleans Metro, Louisiana, Mississippi, and the U.S., by Industry: Goods Producing Industries

Month	Industry	
	<u>Natural Resources, Mining, and Construction</u>	<u>Manufacturing</u>
6/05		
New Orleans	38,500 (ns)	38,900 (ns)
Metro	(6.2%)	(6.3%)
Louisiana	164,700 (8.5%)	151,500 (7.8%)
Mississippi	59,300 (ns) (5.2%)	179,300 (15.8%)
U.S.	7,858,000 (5.9%)	14,276,000 (10.7%)
7/05		
New Orleans	38,500 (ns)	38,700 (ns)
Metro	(6.3%)	(6.3%)
Louisiana	161,100 (8.3%)	149,900 (7.8%)
Mississippi	59,300 (ns) (5.2%)	180,100 (15.9%)
U.S.	7,864,000 (5.9%)	14,270,000 (10.7%)
8/05		
New Orleans	38,500 (ns)	38,600 (ns)
Metro	(6.3%)	(6.3%)
Louisiana	162,000 (8.4%)	149,800 (7.7%)
Mississippi	59,600 (ns) (5.2%)	180,000 (15.8%)
U.S.	7,899,000 (5.9%)	14,260,000 (10.6%)
9/05		
New Orleans	21,600 (ns)	27,200 (ns)
Metro	(5.3%)	(6.7%)
Louisiana	131,300 (7.7%)	139,300 (8.2%)
Mississippi	57,800 (ns) (5.3%)	171,000 (15.8%)
U.S.	7,920,000 (5.9%)	14,244,000 (10.6%)
10/05		
New Orleans	24,100 (ns)	27,500 (ns)
Metro	(6.1%)	(7.0%)
Louisiana	132,600 (7.8%)	139,000 (8.2%)
Mississippi	58,400 (ns) (5.3%)	174,100 (15.9%)
U.S.	7,959,000 (p) (5.9%)	14,259,000 (p) (10.6%)

(continued on next page)

Table 5c. Number of Non-farm Employed People in New Orleans Metro, Louisiana, Mississippi, and the U.S., by Industry: Goods Producing Industries (continued)

Month	Industry	
	<u>Natural Resources, Mining, and Construction</u>	<u>Manufacturing</u>
11/05		
New Orleans	27,400 (ns)	27,200 (ns)
Metro	(6.8%)	(6.7%)
Louisiana	138,200	138,800
Mississippi	(8.1%)	(8.1%)
Mississippi	58,100 (ns)	175,100
U.S.	(5.3%)	(15.8%)
	7,998,000 (p)	14,270,000 (p)
	(6.0%)	(10.6%)
12/05		
New Orleans	27,500 (ns)	27,200 (ns)
Metro	(6.7%)	(6.7%)
Louisiana	150,100 (ns)	143,100
Mississippi	(8.6%)	(8.2%)
Mississippi	62,600	175,200
U.S.	(5.6%)	(15.6%)
	8,060,000 (p)	14,213,000 (p)
	(6.0%)	(10.6%)
1/06		
New Orleans	27,600 (ns)	27,400 (ns)
Metro	(6.7%)	(6.7%)
Louisiana	148,600 (ns)	143,100
Mississippi	(8.5%)	(8.2%)
Mississippi	64,600	177,200
U.S.	(5.7%)	(15.6%)
	8,118,000 (p)	14,229,000 (p)
	(6.0%)	(10.6%)
2/06		
New Orleans	28,400 (p,ns)	28,800 (p,ns)
Metro	(6.8%)	(6.8%)
Louisiana	150,700 (p)	144,500 (p)
Mississippi	(8.6%)	(8.2%)
Mississippi	64,300 (p)	176,800 (p)
U.S.	(5.7%)	(15.6%)
	8,164,000 (p)	14,228,000 (p)
	(6.1%)	(10.6%)
3/06		
New Orleans	29,400 (p,ns)	28,100 (p,ns)
Metro	(6.9%)	(6.6%)
Louisiana	152,900 (p)	143,600 (p)
Mississippi	(8.6%)	(8.1%)
Mississippi	65,500 (p)	177,300 (p)
U.S.	(5.7%)	(15.6%)
	8,163,000 (p)	14,212,000 (p)
	(6.0%)	(10.5%)
4/06		
New Orleans	28,800 (p,ns)	28,100 (p,ns)
Metro	(6.8%)	(6.6%)

(continued on next page)

Table 5c. Number of Non-farm Employed People in New Orleans Metro, Louisiana, Mississippi, and the U.S., by Industry: Goods Producing Industries (continued)

Month	Industry	
	<u>Natural Resources, Mining, and Construction</u>	<u>Manufacturing</u>
4/06		
Louisiana	154,600 (p) (8.8%)	143,600 (p) (8.2%)
Mississippi	64,200 (p) (5.7%)	175,900 (p) (15.5%)
U.S.	8,179,000 (p) (6.1%)	14,246,000 (p) (10.5%)
5/06		
New Orleans Metro	29,800 (p,ns) (6.9%)	28,600 (p,ns) (6.7%)
Louisiana	155,300 (p) (8.8%)	143,800 (p) (8.1%)
Mississippi	65,000 (p) (5.7%)	175,000 (p) (15.4%)
U.S.	8,186,000 (p) (6.1%)	14,230,000 (p) (10.5%)
6/06		
New Orleans Metro	29,900 (p,ns) (6.9%)	28,000 (p,ns) (6.4%)
Louisiana	155,800 (p,ns) (8.8%)	145,700 (p,ns) (8.2%)
Mississippi	65,800 (p,ns) (5.8%)	175,900 (p,ns) (15.5%)
U.S.	8,180,000 (p) (6.1%)	14,251,000 (p) (10.5%)
7/06		
New Orleans Metro	Next available: 8/30/2006	
Louisiana	Next available: 8/18/2006	
Mississippi	Next available: 8/18/2006	
U.S.	Next available: 8/4/2006	

Notes: Numbers in parentheses refer to percentage of total non-farm employment represented by occupation; (p): preliminary; (ns): not seasonally adjusted.

Sources: Louisiana Department of Labor; U.S. Bureau of Labor Statistics, U.S. Department of Labor

Table 5d. Number of Non-farm Employed People in New Orleans Metro, Louisiana, Mississippi, and the U.S., by Major Industry: Government

Month	Level of Government		
	Local	State	Federal
6/05			
New Orleans Metro	63,500 (ns) (10.3%)	25,700 (ns) (4.2%)	15,700 (ns) (2.5%)
Louisiana	231,600 (12.0%)	116,100 (6.0%)	33,700 (1.7%)
Mississippi	156,800 (13.8%)	60,800 (5.3%)	25,500 (2.2%)
U.S.	14,015,000 (10.5%)	5,026,000 (3.8%)	2,719,000 (2.0%)
7/05			
New Orleans Metro	61,300 (ns) (10.0%)	26,100 (ns) (4.3%)	15,600 (ns) (2.6%)
Louisiana	221,500 (11.5%)	116,400 (6.0%)	33,600 (1.7%)
Mississippi	150,600 (13.3%)	59,800 (5.3%)	25,600 (2.3%)
U.S.	14,064,000 (10.5%)	5,034,000 (3.8%)	2,719,000 (2.0%)
8/05			
New Orleans Metro	61,100 (ns) (10.0%)	26,700 (ns) (4.4%)	15,600 (ns) (2.6%)
Louisiana	223,000 (11.5%)	115,300 (6.0%)	33,400 (1.7%)
Mississippi	156,200 (13.7%)	59,800 (5.3%)	25,600 (2.3%)
U.S.	14,098,000 (10.5%)	5,033,000 (3.8%)	2,718,000 (2.0%)
9/05			
New Orleans Metro	58,100 (ns) (14.3%)	26,400 (ns) (6.5%)	15,500 (ns) (3.8%)
Louisiana	225,200 (13.3%)	119,500 (7.0%)	33,400 (2.0%)
Mississippi	157,200 (14.5%)	60,600 (5.6%)	25,400 (2.3%)
U.S.	14,099,000 (10.5%)	5,039,000 (3.8%)	2,722,000 (2.0%)
10/05			
New Orleans Metro	56,900 (ns) (14.4%)	26,000 (ns) (6.6%)	15,300 (ns) (3.9%)
Louisiana	226,800 (13.3%)	121,800 (7.2%)	33,500 (2.0%)
Mississippi	158,100 (14.4%)	61,200 (5.6%)	25,500 (2.3%)
U.S.	14,100,000 (p) (10.5%)	5,034,000 (p) (3.8%)	2,717,000 (p) (2.0%)

(continued on next page)

Table 5d. Number of Non-farm Employed People in New Orleans Metro, Louisiana, Mississippi, and the U.S., by Major Industry: Government (continued)

Month	Level of Government		
	Local	State	Federal
11/05			
New Orleans	57,100 (ns)	25,600 (ns)	14,600 (ns)
Metro	(14.1%)	(6.3%)	(3.6%)
Louisiana	227,400	121,400	33,100
	(13.3%)	(7.1%)	(1.9%)
Mississippi	158,100 (ns)	61,400 (ns)	25,700 (ns)
	(14.3%)	(5.6%)	(2.3%)
U.S.	14,112,000 (p)	5,041,000 (p)	2,719,000 (p)
	(10.5%)	(3.8%)	(2.0%)
12/05			
New Orleans	53,900 (ns)	25,300 (ns)	14,300 (ns)
Metro	(13.2%)	(6.2%)	(3.5%)
Louisiana	223,400 (ns)	121,000 (ns)	33,300 (ns)
	(12.8%)	(7.0%)	(1.9%)
Mississippi	158,200 (ns)	59,300	25,700 (ns)
	(14.0%)	(5.3%)	(2.3%)
U.S.	14,123,000 (p)	5,039,000 (p)	2,713,000 (p)
	(10.5%)	(3.8%)	(2.0%)
1/06			
New Orleans	53,800 (ns)	24,800 (ns)	14,100 (ns)
Metro	(13.1%)	(6.0%)	(3.4%)
Louisiana	223,100 (ns)	115,800 (ns)	33,200 (ns)
	(12.8%)	(6.6%)	(1.9%)
Mississippi	157,000 (ns)	59,300 (ns)	25,800 (ns)
	(13.9%)	(5.2%)	(2.3%)
U.S.	14,131,000 (p)	5,011,000 (p)	2,705,000 (p)
	(10.5%)	(3.7%)	(2.0%)
2/06			
New Orleans	53,300 (p,ns)	24,400 (p,ns)	13,700 (p,ns)
Metro	(12.7%)	(5.8%)	(3.3%)
Louisiana	223,000 (p,ns)	119,700 (p,ns)	33,200 (p,ns)
	(12.7%)	(6.8%)	(1.9%)
Mississippi	157,800 (p,ns)	59,900 (p,ns)	25,600 (p,ns)
	(13.9%)	(5.3%)	(2.3%)
U.S.	14,148,000 (p)	5,030,000 (p)	2,707,000 (p)
	(10.5%)	(3.7%)	(2.0%)
3/06			
New Orleans	53,800 (p,ns)	24,400 (p,ns)	13,400 (p,ns)
Metro	(12.7%)	(5.7%)	(3.2%)
Louisiana	222,900 (p,ns)	119,600 (p,ns)	33,300 (p,ns)
	(12.6%)	(6.8%)	(1.9%)
Mississippi	158,600 (p,ns)	60,100 (p,ns)	25,600 (p,ns)
	(13.9%)	(5.3%)	(2.2%)
U.S.	14,170,000 (p)	5,026,000 (p)	2,707,000 (p)
	(10.5%)	(3.7%)	(2.0%)
4/06			
New Orleans	53,700 (p,ns)	24,100 (p,ns)	13,200 (p,ns)
Metro	(12.7%)	(5.7%)	(3.1%)
Louisiana	222,600 (p,ns)	118,300 (p,ns)	32,900 (p,ns)
	(12.7%)	(6.7%)	(1.9%)

(continued on next page)

Table 5d. Number of Non-farm Employed People in New Orleans Metro, Louisiana, Mississippi, and the U.S., by Major Industry: Government (continued)

Month	Level of Government		
	Local	State	Federal
4/06			
Mississippi	158,700 (p) (14.0%)	59,900 (p) (5.3%)	25,400 (p) (2.2%)
U.S.	14,176,000 (p) (10.5%)	5,027,000 (p) (3.7%)	2,701,000 (p) (2.0%)
5/06			
New Orleans Metro	53,400 (p,ns) (12.4%)	24,200 (p,ns) (5.6%)	13,000 (p,ns) (3.0%)
Louisiana	222,300 (p,ns) (12.6%)	116,200 (p,ns) (6.6%)	33,000 (p,ns) (1.9%)
Mississippi	159,700 (p,ns) (14.1%)	58,800 (p,ns) (5.2%)	25,600 (p,ns) (2.3%)
U.S.	14,188,000 (p) (10.5%)	5,026,000 (p) (3.7%)	2,702,000 (p) (2.0%)
6/06			
New Orleans Metro	54,200 (p,ns) (12.5%)	24,500 (p,ns) (5.6%)	12,900 (p,ns) (3.0%)
Louisiana	224,000 (p,ns) (12.6%)	110,800 (p,ns) (6.2%)	33,000 (p,ns) (1.9%)
Mississippi	155,900 (p,ns) (13.7%)	59,000 (p,ns) (5.2%)	25,600 (p,ns) (2.3%)
U.S.	14,215,000 (p) (10.5%)	5,051,000 (p) (3.7%)	2,701,000 (p) (2.0%)
7/06			
New Orleans Metro	Next available: 8/30/2006		
Louisiana	Next available: 8/18/2006		
Mississippi	Next available: 8/18/2006		
U.S.	Next available: 8/4/2006		

Notes: Numbers in parentheses refer to percentage of total non-farm employment represented by occupation; (p): preliminary; (ns): not seasonally adjusted.

Sources: Louisiana Department of Labor; U.S. Bureau of Labor Statistics, U.S. Department of Labor

Table 6a. Average Weekly Wage: Industry Sectors A-M

Quarter	Industry Sector									
	<u>Accommodation and food services</u>	<u>Administrative and waste services</u>	<u>Agriculture, forestry, fishing, hunting</u>	<u>Arts, entertainment, and recreation</u>	<u>Construction</u>	<u>Educational services</u>	<u>Finance and insurance</u>	<u>Health care and social assistance</u>	<u>Information</u>	<u>Management</u>
2004, Q4										
Orleans Parish	\$341	526	444	619	863	740	986	792	649	1,199
RLMA 1	294	496	529	750	754	660	970	750	747	1,082
Louisiana	250	476	498	552	721	582	856	663	780	1,002
U.S.	295	562	473	656	864	698	1,394	785	1,240	1,639
2005, Q1										
Orleans Parish	343	578	432	664	715	793	1,299	652	707	1,626
RLMA 1	293	496	400	700	685	688	1,078	640	751	1,329
Louisiana	244	457	440	530	659	532	866	545	757	1,131
U.S.	281	519	421	514	749	664	1,744	664	1,244	1,842
2005, Q2										
Orleans Parish	339	418	424	558	708	759	1,016	674	745	1,235
RLMA 1	290	433	423	493	684	667	939	677	736	1,069
Louisiana	247	435	458	433	659	579	801	575	719	967
U.S.	286	525	430	481	775	691	1,218	706	1,135	1,531
2005, Q3										
Orleans Parish					Not available					
RLMA 1					Not available					
Louisiana	247	459	451	489	662	654	790	605	778	1,253
U.S.	299	547	444	504	815	744	1,246	745	1,208	1,540
2005, Q4										
Orleans Parish					Next available: 2006					
RLMA 1					Next available: 2006					
Louisiana	271	591	524	618	793	668	1,004	677	876	1,112
U.S.	300	569	481	674	892	707	1,439	793	1,246	1,647

Notes: RLMA 1 = Regional Labor Market Area 1 (New Orleans Region) includes the following parishes: Orleans, Jefferson, Plaquemines, St. Bernard, St. Charles, St. James, St. John the Baptist, and St. Tammany; U.S. occupation data only aligns with the data at a lower level of geography in two cases. Quarterly data for the U.S. was found by taking an average of the months belonging to that quarter. The most recently published numbers are preliminary. With the exception of the public administration industry, numbers reflect average weekly wages in the private sector only. For wage data pertaining to occupations owned by local, state, or federal government, please visit the source noted below.

Sources: Louisiana Department of Labor; U.S. Bureau of Labor Statistics, U.S. Department of Labor

Table 6b. Average Weekly Wage: Industry Sectors M-W

Quarter	Industry Sector									
	Manufacturing	Mining	Other services except public administration	Professional and technical services	Public administration	Real estate, rental, and leasing	Retail trade	Transportation and warehousing	Utilities	Wholesale trade
2004, Q4										
Orleans Parish	\$995	1,839	503	1,406	856	606	467	901	1,098	1,023
RLMA 1	997	1,489	527	1,237	782	647	443	890	1,080	983
Louisiana	970	1,211	496	1,077	581	667	419	808	1,181	889
U.S.	985	1,362	518	1,398	817	809	497	802	1,404	1,128
2005, Q1										
Orleans Parish	930	2,395	444	1,030	867	534	412	818	1,264	1,070
RLMA 1	1,037	1,831	455	981	771	575	405	807	1,261	967
Louisiana	956	1,277	434	785	542	598	384	751	1,353	835
U.S.	940	1,464	473	1,171	758	741	457	718	1,609	1,046
2005, Q2										
Orleans Parish	899	1,911	452	1,032	823	540	430	852	1,200	970
RLMA 1	968	1,593	460	944	756	592	428	826	1,119	938
Louisiana	918	1,172	447	830	543	607	405	771	1,116	820
U.S.	914	1,281	488	1,185	771	710	474	742	1,365	1,005
2005, Q3										
Orleans Parish										
RLMA 1										
Louisiana	937	1,245	454	839	590	635	404	797	1,241	844
U.S.	946	1,377	505	1,225	819	744	490	782	1,405	1,048
2005, Q4										
Orleans Parish										
RLMA 1										
Louisiana	992	1,280	528	1,075	585	751	462	872	1,174	947
U.S.	991	1,439	525	1,435	827	834	495	795	1,407	1,152

Notes: RLMA 1 = Regional Labor Market Area 1 (New Orleans Region) includes the following parishes: Orleans, Jefferson, Plaquemines, St. Bernard, St. Charles, St. James, St. John the Baptist, and St. Tammany; U.S. occupation data only aligns with the data at a lower level of geography in two cases. Quarterly data for the U.S. was found by taking an average of the months belonging to that quarter. The most recently published numbers are preliminary. With the exception of the public administration industry, numbers reflect average weekly wages in the private sector only. For wage data pertaining to occupations owned by local, state, or federal government, please visit the source noted below.

Sources: Louisiana Department of Labor; U.S. Bureau of Labor Statistics, U.S. Department of Labor

Table 7. Delinquency and Foreclosure Rates for Louisiana, Mississippi, and the U.S.: Subprime Loans

Quarter	Total Past Due	30 Days Past Due	60 Days Past Due	90 Days Past Due	Foreclosures Started	Foreclosures at End of Quarter
2004, Q1						
Louisiana	15.0%	8.2	2.1	4.7	2.2	6.5
Mississippi	18.0	9.2	2.6	6.2	2.5	8.0
U.S.	10.3	5.7	1.7	2.9	1.7	4.9
2004, Q2						
Louisiana	15.1	8.3	2.5	4.3	1.5	6.3
Mississippi	18.7	9.7	2.9	6.2	1.8	8.0
U.S.	10.6	6.2	1.8	2.7	1.3	4.4
2004, Q3						
Louisiana	16.3	9.1	2.9	4.3	1.8	5.3
Mississippi	20.0	10.5	3.3	6.2	2.3	6.7
U.S.	11.0	6.5	2.0	2.6	1.4	3.9
2004, Q4						
Louisiana	16.0	8.8	2.7	4.5	2.0	5.5
Mississippi	19.9	10.1	3.4	6.5	2.3	6.6
U.S.	11.1	6.4	2.0	2.7	1.5	3.8
2005, Q1						
Louisiana	13.7	7.4	2.2	4.1	1.7	4.9
Mississippi	17.0	8.5	2.7	5.9	2.6	6.2
U.S.	9.5	5.4	1.7	2.5	1.4	3.5
2005, Q2						
Louisiana	14.3	8.1	2.4	3.9	1.7	4.6
Mississippi	18.6	9.4	3.2	6.0	1.9	5.4
U.S.	10.4	6.0	1.9	2.5	1.3	3.3
2005, Q3						
Louisiana	36.6	25.7	5.7	5.3	1.4	4.2
Mississippi	29.8	18.0	4.9	6.9	1.7	4.9
U.S.	11.1	6.6	2.1	2.4	1.5	3.3
2005, Q4						
Louisiana	33.9	7.9	5.5	20.5	0.5	3.9
Mississippi	31.1	9.6	5.8	15.7	0.8	4.1
U.S.	11.6	6.5	2.2	2.9	1.5	3.3
2006, Q1						
Louisiana	26.0	7.0	3.5	15.6	0.5	3.7
Mississippi	25.9	8.1	4.1	13.7	1.0	4.0
U.S.	10.4	5.8	1.9	2.7	1.6	3.5
2006, Q2						
Louisiana	Next available: 2006					
Mississippi						
U.S.						

Note: A subprime loan is a loan that is offered at a rate above prime to individuals who do not qualify for prime rate loans.

Source: Mortgage Banker's Association

Table 8. Delinquency and Foreclosure Rates for Louisiana, Mississippi, and the U.S.: Prime Loans

Quarter	Total Past Due	30 Days Past Due	60 Days Past Due	90 Days Past Due	Foreclosures Started	Foreclosures at End of Quarter
2004, Q1						
Louisiana	3.1%	2.2	0.4	0.4	0.3	0.8
Mississippi	4.1	3.0	0.7	0.5	0.4	1.2
U.S.	2.1	1.5	0.3	0.3	0.2	0.5
2004, Q2						
Louisiana	3.5	2.6	0.5	0.4	0.3	0.7
Mississippi	4.8	3.5	0.8	0.5	0.3	1.1
U.S.	2.3	1.7	0.4	0.3	0.2	0.5
2004, Q3						
Louisiana	3.8	2.8	0.6	0.4	0.3	0.7
Mississippi	5.0	3.6	0.8	0.6	0.4	1.0
U.S.	2.4	1.7	0.4	0.3	0.2	0.5
2004, Q4						
Louisiana	3.8	2.7	0.6	0.5	0.4	0.8
Mississippi	4.8	3.4	0.8	0.6	0.4	1.0
U.S.	2.4	1.7	0.4	0.3	0.2	0.5
2005, Q1						
Louisiana	3.3	2.4	0.5	0.4	0.3	0.7
Mississippi	4.0	2.9	0.6	0.5	0.3	0.9
U.S.	2.0	1.4	0.3	0.3	0.2	0.5
2005, Q2						
Louisiana	3.4	2.4	0.5	0.4	0.3	0.7
Mississippi	4.5	3.2	0.7	0.6	0.3	0.8
U.S.	2.2	1.6	0.3	0.3	0.2	0.4
2005, Q3						
Louisiana	19.7	17.6	1.3	0.8	0.2	0.7
Mississippi	12.7	10.5	1.3	0.9	0.3	0.8
U.S.	2.4	1.7	0.4	0.3	0.2	0.4
2005, Q4						
Louisiana	16.1	4.3	2.7	9.1	0.6	9.7
Mississippi	11.8	4.0	2.2	5.6	0.1	0.6
U.S.	2.5	1.7	0.4	0.4	0.2	0.4
2006, Q1						
Louisiana	9.7	3.0	1.4	5.3	0.1	0.5
Mississippi	8.2	3.1	1.3	3.8	0.1	0.6
U.S.	2.0	1.3	0.3	0.4	0.2	0.4
2006, Q2						
Louisiana						
Mississippi						
U.S.						

Source: Mortgage Banker's Association

Table 9. Delinquency and Foreclosure Rates for Louisiana, Mississippi, and the U.S.: All Loans

Quarter	Total Past Due	30 Days Past Due	60 Days Past Due	90 Days Past Due	Foreclosures Started	Foreclosures at End of Quarter
2004, Q1						
Louisiana	6.0%	3.8	0.9	1.3	0.6	1.8
Mississippi	7.9	4.8	1.2	1.8	0.8	2.5
U.S.	4.1	2.6	0.7	0.9	0.5	1.3
2004, Q2						
Louisiana	6.9	4.5	1.2	1.3	0.6	1.8
Mississippi	8.6	5.3	1.5	1.8	0.7	2.3
U.S.	4.5	2.9	0.8	0.9	0.4	1.2
2004, Q3						
Louisiana	7.5	4.8	1.3	1.3	0.6	1.7
Mississippi	9.2	5.7	1.6	1.9	0.8	2.1
U.S.	4.7	3.0	0.8	0.9	0.4	1.2
2004, Q4						
Louisiana	7.5	4.7	1.3	1.5	0.7	1.7
Mississippi	9.2	5.5	1.6	2.1	0.8	2.1
U.S.	4.7	3.0	0.8	0.9	0.5	1.2
2005, Q1						
Louisiana	6.3	4.0	1.0	1.3	0.6	1.6
Mississippi	7.6	4.6	1.2	1.8	0.8	2.0
U.S.	3.9	2.4	0.7	0.8	0.4	1.1
2005, Q2						
Louisiana	6.7	4.2	1.1	1.3	0.5	1.4
Mississippi	8.5	5.1	1.5	1.9	0.6	1.7
U.S.	4.3	2.7	0.8	0.8	0.4	1.0
2005, Q3						
Louisiana	24.6	20.0	2.6	2.0	0.5	1.4
Mississippi	17.4	12.7	2.3	2.4	0.5	1.5
U.S.	4.6	3.0	0.8	0.9	0.4	1.0
2005, Q4						
Louisiana	20.8	5.3	3.4	12.1	0.2	1.3
Mississippi	16.9	5.6	3.1	8.2	0.3	1.3
U.S.	4.7	2.9	0.8	1.0	0.4	1.0
2006, Q1						
Louisiana	13.7	4.0	1.8	7.9	0.2	1.2
Mississippi	12.9	4.5	2.0	6.4	0.3	1.2
U.S.	4.0	2.3	0.7	1.0	0.4	1.0
2006, Q2						
Louisiana						
Mississippi						
U.S.						

Source: Mortgage Banker's Association

Table 10. Average Home Sale Price in New Orleans Metro, Single Family Homes, by Parish

Month	Parish								
	Orleans	West Orleans (Algiers)	East Jefferson	West Jefferson	St. Bernard	Plaquemines	St. Charles, St. James, and St. John the Baptist	East St. Tammany	West St. Tammany
9/04	\$190,152	\$192,443	\$221,740	\$134,208	\$114,702	\$234,972	\$141,942	\$159,063	\$228,165
9/05	1,050,000	189,000	212,606	188,000	0	389,000	183,818	217,202	252,240
10/05	662,857	298,790	267,013	145,389	0	352,545	176,085	172,895	253,047
11/05	369,662	209,088	263,161	151,457	0	267,553	180,561	161,973	251,180
12/05	319,504	205,323	244,918	161,227	11,000	247,679	167,726	182,045	254,270
1/06	340,208	184,928	239,637	149,142	35,000	240,667	194,266	162,580	252,195
2/06	292,735	240,721	256,590	156,271	57,333	286,750	176,899	159,849	306,309
3/06	250,328	215,497	247,250	152,583	29,500	276,450	187,615	166,549	274,211
4/06	235,126	227,623	235,883	165,906	92,643	277,392	193,142	183,465	286,863
5/06	259,605	240,162	248,722	169,149	60,286	289,964	227,388	179,871	313,857
6/06	247,436	207,815	263,760	172,000	36,880	221,100	219,613	187,596	301,778
7/06									

Next available: 9/2006

*Note: Variance across months is due to changes in both the demand and supply in these local housing markets.**Source: New Orleans Metropolitan Association of Realtors (NOMAR)***Table 11a. Number of Home Sales in New Orleans Metro, Single Family Homes, by Parish**

Month	Parish								
	Orleans	West Orleans (Algiers)	East Jefferson	West Jefferson	St. Bernard	Plaquemines	St. Charles, St. James, and St. John the Baptist	East St. Tammany	West St. Tammany
9/04	191	49	154	117	46	9	76	139	182
9/05	1	1	8	1	0	1	87	40	186
10/05	7	10	126	42	0	11	133	191	373
11/05	48	39	195	113	0	19	128	207	286
12/05	95	72	255	136	1	14	140	211	260
1/06	139	41	184	173	1	6	79	187	180
2/06	140	50	223	170	3	6	70	180	165
3/06	214	70	278	205	3	14	106	264	240
4/06	187	57	245	159	7	12	87	180	157
5/06	214	74	225	193	7	11	96	219	219
6/06	273	62	231	187	25	15	101	247	260
7/06									

Next available: 9/2006

*Note: Variance across months is due to changes in both the demand and supply in these local housing markets.**Source: New Orleans Metropolitan Association of Realtors (NOMAR)*

Table 11b. Total Home Sales: Single-Family, Apartment Condos, and Co-ops, in Louisiana, Mississippi, and the U.S.

Quarter	Level of Geography		
	<u>Louisiana</u>	<u>Mississippi</u>	<u>U.S.</u>
2004, Q4	77,500	56,900	6,877,000
2005, Q1	82,800	60,000	6,837,000
2005, Q2	84,400	64,100	7,223,000
2005, Q3	82,400	54,000	7,240,000
2005, Q4	97,600	64,400	6,943,000
2006, Q1	98,800 (p)	70,400 (p)	6,797,000 (p)
2006, Q2	Next available: 8/15/2006		

Note: (p): preliminary

Source: National Association of Realtors

Table 12. Fair Market Rents in New Orleans Metro, by Unit Bedrooms

Year	<u>Efficiency</u>	<u>1-Bedroom</u>	<u>2-Bedroom</u>	<u>3-Bedroom</u>	<u>4-Bedroom</u>
FY 2000	\$365	\$418	\$521	\$709	\$858
FY 2001	369	423	527	717	868
FY 2002	446	512	637	867	1,050
FY 2003	461	529	659	896	1,085
FY 2004	463	531	661	899	1,089
FY 2005	522	578	676	868	897
FY 2006	725	803	940	1,206	1,247

Source: U.S. Department of Housing and Urban Development

Table 13. Quarterly Personal Income

Quarter	Level of Geography		
	Louisiana	Mississippi	United States
2004, Q2			
Total personal income (millions of dollars)	\$121,836	70,364	9,604,015
Percent change from preceding quarter	n.a.	n.a.	n.a.
2004, Q3			
Total personal income (millions of dollars)	122,930	71,032	9,719,654
Percent change from preceding quarter	0.9	1.0	1.2
2004, Q4			
Total personal income (millions of dollars)	126,003	72,396	10,015,057
Percent change from preceding quarter	2.5	1.9	3.0
2005, Q1			
Total personal income (millions of dollars)	127,591	73,352	10,075,908
Percent change from preceding quarter	1.3	1.3	0.6
2005, Q2			
Total personal income (millions of dollars)	129,649	74,849	10,186,624
Percent change from preceding quarter	1.6	2.0	1.1
2005, Q3			
Total personal income (millions of dollars)	64,774	71,613	10,252,278
Percent change from preceding quarter	-49.6	-3.4	0.6
2005, Q4			
Total personal income (millions of dollars)	128,120	76,643	10,490,665
Percent change from preceding quarter	97.9	7.0	2.3
2006, Q1			
Total personal income (millions of dollars)	132,060	78,906	10,588,304
Percent change from preceding quarter	3.1	3.0	0.9
2006, Q2			
Total personal income (millions of dollars)	Next available: 9/26/2006		
Percent change from preceding quarter			

Note: n.a.: not applicable

Source: Bureau of Economic Analysis

IV. SHORT TERM RECOVERY INDICATORS

Table 14. Number of Operational and Closed Public Transportation Routes in New Orleans

Week	<u>Number of riders</u>	<u>Number of operational routes</u>	<u>Number of closed routes</u>
<i>Pre-Katrina</i>	<i>124,000</i>	57 (100%)	0 (0%)
10/2/05	Not available	5 (9%)	52 (91%)
10/9/05	431	9 (16%)	48 (84%)
10/16/05	1,009	12 (21%)	45 (79%)
10/23/05	1,446	13 (23%)	44 (77%)
10/30/05	1,920	14 (25%)	43 (75%)
11/6/05	2,928	17 (30%)	40 (70%)
11/13/05	4,234	16 (28%)	41 (72%)
11/20/05	5,977	18 (32%)	39 (68%)
11/27/05	5,192	21 (37%)	36 (63%)
12/4/05	7,397	21 (37%)	36 (63%)
12/11/05	7,940	23 (40%)	34 (60%)
12/18/05	8,705	27 (47%)	30 (53%)
12/25/05	8,494	27 (47%)	30 (53%)
1/1/06	9,411	27 (47%)	30 (53%)
1/8/06	10,863	28 (49%)	29 (51%)
1/15/06	12,809	28 (49%)	29 (51%)
1/22/06	11,709	28 (49%)	29 (51%)
1/29/06	14,318	28 (49%)	29 (51%)
2/5/06	14,847	28 (49%)	29 (51%)
2/12/06	15,498	28 (49%)	29 (51%)
2/19/06	15,720	28 (49%)	29 (51%)
2/26/06	16,740	28 (49%)	29 (51%)
3/5/06	15,961	28 (49%)	29 (51%)
3/12/06	18,603	28 (49%)	29 (51%)
3/19/06	19,360	28 (49%)	29 (51%)

(continued)

Table 14. Number of Operational and Closed Public Transportation Routes in New Orleans (continued)

Week	<u>Number of riders</u>	<u>Number of operational routes</u>	<u>Number of closed routes</u>
3/26/06	19,161	28 (49%)	29 (51%)
4/2/06	19,346	28 (49%)	29 (51%)
4/9/06	18,862	28 (49%)	29 (51%)
4/16/06	19,195	28 (49%)	29 (51%)
4/23/06	20,474	28 (49%)	29 (51%)
4/30/06	20,634	28 (49%)	29 (51%)
5/7/06	20,879	28 (49%)	29 (51%)
5/14/06	21,156	28 (49%)	29 (51%)
5/21/06	21,665	28 (49%)	29 (51%)
5/28/06	20,225	28 (49%)	29 (51%)
6/4/06	20,574	28 (49%)	29 (51%)
6/11/06	21,878	28 (49%)	29 (51%)
6/18/06	21,900	28 (49%)	29 (51%)
6/25/06	22,837	28 (49%)	29 (51%)
7/2/06	22,712	28 (49%)	29 (51%)
7/9/06	19,137	28 (49%)	29 (51%)
7/16/06	22,705	28 (49%)	29 (51%)
7/23/06	22,906	28 (49%)	29 (51%)
7/30/06			

Next available: 9/2006

Note: Ridership numbers reflect daily averages of the previous week.

Source: New Orleans Regional Transit Authority

Table 15. Number of Operational and Non-Operational Buses in New Orleans

Week	<u>Number of riders</u>	<u>Number of operational buses</u>	<u>Number of non-operational buses</u>
<i>Pre-Katrina</i>	<i>124,000</i>	<i>368</i>	<i>0</i>
		<i>(100%)</i>	<i>(0%)</i>
10/2/05	Not available	11	357
		(3%)	(97%)
10/9/05	431	30	349
		(8%)	(91%)
10/16/05	1,009	33	335
		(9%)	(91%)
10/23/05	1,446	33	335
		(9%)	(91%)
10/30/05	1,920	33	335
		(9%)	(91%)
11/6/05	2,928	33	335
		(9%)	(91%)
11/13/05	4,234	35	333
		(10%)	(90%)
11/20/05	5,977	35	333
		(10%)	(90%)
11/27/05	5,192	44	324
		(12%)	(88%)
12/3/05	7,397	44	324
		(12%)	(88%)
12/10/05	7,940	44	324
		(12%)	(88%)
12/18/05	8,705	54	314
		(15%)	(85%)
12/24/05	8,494	57	311
		(15%)	(85%)
12/31/05	9,411	57	311
		(15%)	(85%)
1/7/06	10,863	61	307
		(17%)	(83%)
1/14/06	12,809	61	307
		(17%)	(83%)
1/21/06	11,709	61	307
		(17%)	(83%)
1/29/06	14,318	61	307
		(17%)	(83%)
2/5/06	14,847	61	307
		(17%)	(83%)
2/12/06	15,498	61	307
		(17%)	(83%)
2/19/06	15,720	61	307
		(17%)	(83%)
2/26/06	16,740	61	307
		(17%)	(83%)
3/5/06	15,961	61	307
		(17%)	(83%)
3/12/06	18,603	61	307
		(17%)	(83%)
3/19/06	19,360	61	307
		(17%)	(83%)
3/26/06	19,161	61	307
		(17%)	(83%)

(continued)

**Table 15. Number of Operational and Non-Operational Buses in New Orleans
(continued)**

Week	<u>Number of riders</u>	<u>Number of operational buses</u>	<u>Number of non-operational buses</u>
4/2/06	19,346	61 (17%)	307 (83%)
4/9/06	18,862	61 (17%)	307 (83%)
4/16/06	19,195	61 (17%)	307 (83%)
4/23/06	20,474	61 (17%)	307 (83%)
4/30/06	20,634	61 (17%)	307 (83%)
5/7/06	20,879	61 (17%)	307 (83%)
5/14/06	21,156	61 (17%)	307 (83%)
5/21/06	21,665	61 (17%)	307 (83%)
5/28/06	20,225	61 (17%)	307 (83%)
6/4/06	20,574	61 (17%)	307 (83%)
6/11/06	21,878	61 (17%)	307 (83%)
6/18/06	21,900	61 (17%)	307 (83%)
6/25/06	22,837	61 (17%)	307 (83%)
7/2/06	22,712	61 (17%)	307 (83%)
7/9/06	19,137	61 (17%)	307 (83%)
7/16/06	22,705	61 (17%)	307 (83%)
7/23/06	22,906	61 (17%)	307 (83%)
7/30/06			

Next available: 9/2006

Note: Ridership numbers reflect daily averages of the previous week.

Source: New Orleans Regional Transit Authority

Table 16. Number of Commercial Properties for Sale in New Orleans MSA, by Type

Week	Type						Total
	Office	Industrial	Shopping Center	Retail/ Commercial	Vacant Land	Hospitality	
10/12/05	47	47	3	47	143	4	291
10/19/05	48	48	4	50	139	4	293
10/26/05	41	46	3	47	125	3	265
11/2/05	37	48	4	46	124	3	259
11/9/05	36	48	4	49	125	3	264
11/16/05	39	47	4	50	127	4	271
11/23/05	42	48	4	51	123	4	272
11/30/05	44	48	4	51	119	3	269
12/7/05	47	48	4	52	115	3	268
12/14/05	51	47	5	54	122	3	282
12/21/05	49	44	4	54	127	3	281
12/28/05	51	42	4	57	127	3	284
1/4/06	44	31	6	56	126	4	267
1/11/06	44	32	7	56	126	4	269
1/18/06	40	37	6	56	120	6	265
1/25/06	40	37	7	56	121	5	266
2/1/06	39	40	8	58	123	5	273
2/8/06	41	37	9	62	130	5	284
2/15/06	40	39	10	60	117	5	271
2/22/06	41	40	11	60	115	5	272
3/1/06	43	47	11	61	121	5	288
3/8/06	45	46	11	62	122	5	291
3/15/06	48	48	10	66	124	6	302
3/22/06	50	45	8	71	124	6	304
3/29/06	52	47	10	69	126	6	310
4/5/06	48	46	10	67	126	6	303
4/12/06	43	48	9	69	125	6	300
4/19/06	43	48	9	69	125	6	300
4/26/06	42	43	6	63	122	7	283
5/3/06	42	43	6	63	121	7	282
5/10/06	42	48	7	62	124	7	290
5/17/06	41	48	8	60	122	5	284
5/24/06	41	48	6	58	119	5	277
5/31/06	41	47	4	60	121	5	278
6/7/06	38	42	5	59	116	4	264
6/14/06	41	43	6	54	122	7	273
6/21/06	42	43	5	56	120	7	273
6/28/06	47	39	6	57	125	8	282
7/5/06	49	41	5	60	125	9	289
7/12/06	52	43	5	68	118	9	295
7/19/06	50	42	6	69	115	9	291

(continued)

Table 16. Number of Commercial Properties for Sale in New Orleans MSA, by Type (continued)

Week	Type						Total
	<u>Office</u>	<u>Industrial</u>	<u>Shopping Center</u>	<u>Retail/ Commercial</u>	<u>Vacant Land</u>	<u>Hospitality</u>	
7/26/06	49	43	6	66	113	8	285
8/2/06	43	43	6	64	102	8	266
8/9/06							

Next available: 9/2006

Source: *Property Search, Louisiana Commercial Database*

Table 17. Number of Residential Properties for Sale in New Orleans MSA, by Parish

Week	Parish							New Orleans MSA
	Orleans	Jefferson	Plaquemines	St. Bernard	St. Charles	St. John the Baptist	St. Tammany	
10/12/05	3,153	2,221	97	219	375	260	2,589	8,914
10/19/05	3,120	2,298	102	192	361	249	2,491	8,813
10/26/05	3,112	2,283	102	190	362	254	2,443	8,709
11/2/05	3,006	2,328	91	174	360	244	2,390	8,593
11/9/05	2,992	2,337	99	166	351	272	2,385	8,330
11/16/05	2,977	2,299	96	164	362	259	2,328	8,485
11/23/05	2,936	2,300	92	154	346	258	2,295	8,381
11/30/05	2,951	2,321	92	152	346	255	2,264	8,381
12/7/05	3,004	2,324	86	148	341	252	2,231	8,386
12/14/05	3,029	2,286	88	142	338	242	2,229	8,354
12/21/05	3,009	2,256	87	140	323	221	2,226	8,262
12/28/05	2,975	2,258	89	135	313	228	2,189	8,187
1/4/06	2,899	2,272	88	119	296	211	2,139	8,024
1/11/06	2,920	2,248	87	121	300	213	2,142	8,031
1/18/06	2,974	2,239	86	118	308	125	2,134	7,984
1/25/06	3,000	2,230	75	110	304	120	2,172	8,011
2/1/06	2,897	2,180	71	102	299	124	2,153	7,826
2/8/06	2,819	2,137	71	106	285	117	2,204	7,739
2/15/06	2,873	2,124	71	107	283	118	2,208	7,784
2/22/06	2,892	2,116	70	114	279	123	2,258	7,852
3/1/06	2,867	2,077	67	109	293	122	2,275	7,810
3/8/06	2,927	2,095	73	112	293	120	2,223	7,843
3/15/06	2,971	2,122	71	113	299	143	2,242	7,961
3/22/06	3,007	2,093	75	115	289	147	2,285	8,011
3/29/06	3,035	2,141	81	124	292	146	2,230	8,049
4/5/06	3,028	2,140	86	130	300	140	2,212	8,036
4/12/06	3,148	2,184	88	136	297	150	2,274	8,277
4/19/06	3,148	2,184	88	136	297	150	2,274	8,277
4/26/06	3,411	2,223	95	153	301	166	2,350	8,699
5/3/06	3,434	2,228	96	156	294	169	2,336	8,713
5/10/06	3,594	2,318	106	165	299	164	2,433	9,079
5/17/06	3,706	2,376	100	162	287	162	2,508	9,301
5/24/06	3,774	2,421	105	164	292	158	2,589	9,503
5/31/06	3,693	2,451	106	165	294	163	2,627	9,499
6/7/06	3,884	2,475	102	163	286	170	2,656	9,736
6/14/06	4,063	2,574	113	182	306	190	2,823	10,251
6/21/06	4,106	2,595	111	182	300	200	2,819	10,313
6/28/06	4,164	2,625	113	187	299	201	2,898	10,487
7/5/06	4,185	2,603	139	202	290	195	2,942	10,556
7/12/06	4,272	2,627	136	215	292	201	2,994	10,737
7/19/06	4,401	2,642	143	229	296	213	3,144	11,068

Table 17. Number of Residential Properties for Sale in New Orleans MSA, by Parish

Week	Parish							New Orleans MSA
	Orleans	Jefferson	Plaquemines	St. Bernard	St. Charles	St. John the Baptist	St. Tammany	
7/26/06	4,433	2,697	149	227	296	210	3,186	11,198
8/2/06	4,493	2,739	148	241	311	214	3,240	11,386
8/9/06	Next available: 9/2006							

Source: Residential Property Search, Louisiana Realtors Association

Table 18. Percentage of Residential Utilities Customers with Restored Service in Orleans Parish: Electric, Water, and Gas

Date	Electric		Water		Gas	
	Proportion of former customers with access	Proportion of former customers using service	Proportion of former customers with access	Proportion of former customers using service	Proportion of former customers with access	Proportion of former customers using service
Pre-Katrina	190,000 former customers				145,000 former customers	
9/21/05	19%				36%	
9/28/05	16%				37%	
10/4/05	Not available				39%	
10/11/05	53%				41%	
10/18/05	57%				41%	
10/25/05	57%				42%	
11/4/05	64%				50%	
11/16/05	64%				50%	
11/23/05	64%				50%	
11/30/05	64%				50%	
12/7/05	70%				67%	
12/14/05	74%				72%	
12/21/05	77%				74%	
12/28/05	77%				75%	
1/4/06	77%				75%	
1/11/06	95%				81%	
1/18/06	95%				81%	
1/25/06	95%	30-35%			81%	28-31%
2/25/06	95%	50%			83%	35%
3/25/06	96%	50%			89%	36%
4/25/06	96%	60%			95%	41%
5/25/06	95-100%*	60%			97%	41%
6/25/06	95-100%*	60%			97%	41%
7/25/06	95-100%*	60%			97%	41%
8/25/06	Next available: 9/2006					

Notes: As of May 2006, Entergy had restored electric service in all of New Orleans city except in some areas in the Lower 9th Ward and Lakeview that have been selected for demolition by City Hall. Data for water service are not currently available.

Source: City of New Orleans Situation Report; Entergy New Orleans

Table 19a. Number of People in Red Cross Shelters: Current and Cumulative

Date	<u>Louisiana</u>	<u>Alabama</u>	<u>Mississippi</u>	<u>Texas</u>	<u>Florida</u>	<u>All other states</u>	<u>Overall</u>
10/19/05							
Current population	5,200	0	672	467	0	273	6,500
Cumulative population	141,000	5,493	42,768	231,572	7,312	15,655	443,800
10/26/05							
Current population	2,754	0	568	0	0	196	3,518
Cumulative population	142,494	5,493	42,768	231,572	7,312	15,655	445,294
10/30/05							
Current population	1,797	0	444	0	0	0	2,241
Cumulative population	142,494	5,493	42,768	231,572	7,312	15,655	445,294
11/17/05							
Current population	69	0	112	0	0	0	181
Cumulative population	142,494	5,493	42,768	231,572	7,312	15,655	445,294
11/22/05							
Current population	13	0	104	0	0	0	117
Cumulative population	142,494	5,493	42,768	231,572	7,312	15,655	445,294
12/1/05							
Current population	0	0	6	0	0	0	6
Cumulative population	142,494	5,493	42,774	231,572	7,312	15,655	445,294
12/3/05							
Current population	0	0	0	0	0	0	0
Cumulative population	142,494	5,493	42,774	231,572	7,312	15,655	445,294

Note: The Red Cross shut down all Katrina shelters on December 3, 2005.

Source: Disaster Public Affairs, American Red Cross

Table 19b. Number of Red Cross Shelters: Current and Cumulative

Week	Louisiana	Alabama	Mississippi	Texas	Florida	All other states	Overall
10/19/05							
Current number	64	0	10	6	0	3	83
Cumulative number	256	55	229	358	83	106	1,095
10/26/05							
Current number	46	0	9	0	0	3	58
Cumulative number	264	55	229	358	83	106	1,095
10/30/05							
Current number	26	0	5	0	0	0	31
Cumulative number	264	55	229	358	83	106	1,095
10/30/05							
Current number	2	0	5	0	0	0	7
Cumulative number	264	55	229	358	83	106	1,095
11/22/05							
Current number	1	0	3	0	0	0	4
Cumulative number	264	55	229	358	83	106	1,095
12/1/05							
Current number	0	0	1	0	0	0	1
Cumulative number	264	55	229	358	83	106	1,095
12/3/05							
Current number	0	0	0	0	0	0	0
Cumulative number	264	55	229	358	83	106	1,095

Note: The Red Cross shut down all Katrina shelters on December 3, 2005.

Source: Disaster Public Affairs, American Red Cross

Table 20. Total FEMA Allocations and Obligations, by Type

Week	<u>Unemployment Assistance</u>	<u>Crisis Counseling</u>	<u>Housing Assistance</u>	<u>Manufactured Housing</u>	<u>Other Needs Assistance</u>	<u>Infrastructure</u>	<u>Mitigation</u>	<u>Operations</u>	<u>Administration</u>
9/14/05									
Allocations	\$19,343,320	3,808,395	1,816,250,000	3,631,453,965	40,000,000	596,440,000	10,040,000	2,718,900,000	4,861,738,393
Obligations	3,450,000	1,129,878	1,815,750,000	1,345,390,779	40,000,000	310,015,001	199,998	2,728,421,000	3,466,784,096
9/21/05									
Allocations	24,343,320	3,808,395	2,277,250,000	4,023,753,965	76,000,000	994,931,000	15,040,000	3,115,900,000	5,169,480,848
Obligations	13,450,000	1,798,273	2,243,750,000	1,577,256,158	61,000,000	842,694,113	199,998	2,898,549,500	3,915,816,199
9/28/05									
Allocations	54,097,640	31,704,109	4,106,377,400	3,937,253,965	86,000,000	1,229,763,800	15,040,000	3,464,334,999	5,310,547,479
Obligations	48,800,000	6,701,656	4,105,877,400	1,761,327,191	86,000,000	992,689,666	199,998	3,193,459,500	4,278,447,543
10/6/05									
Allocations	48,800,000	30,215,088	3,271,885,200	2,336,424,953	1,633,000,000	1,215,736,945	12,649,721	3,569,750,500	4,775,293,282
Obligations	48,800,000	12,176,113	3,271,885,200	2,277,032,333	153,000,000	1,081,644,301	11,399,721	3,509,351,246	4,628,450,943
10/13/05									
Allocations	48,800,000	40,588,472	3,303,801,924	3,159,950,391	338,000,000	1,329,034,545	14,837,034	3,607,250,500	4,996,758,434
Obligations	48,800,000	19,468,087	3,303,801,924	2,306,963,567	338,000,000	1,217,973,301	11,587,034	3,568,483,713	4,696,118,963
10/20/05									
Allocations									
Obligations									
10/27/05									
Allocations	105,025,748	43,184,134	3,344,081,924	3,506,862,811	338,000,000	1,506,231,640	16,193,227	4,523,750,500	5,520,925,908
Obligations	77,052,248	24,341,611	3,314,081,924	2,608,034,569	338,000,000	1,417,809,123	12,893,227	4,188,802,713	4,828,098,613
11/3/05									
Allocations	125,025,748	43,184,134	3,342,121,432	3,747,609,950	337,999,917	1,795,234,537	17,193,227	4,592,450,500	5,046,048,361
Obligations	123,952,248	24,341,611	3,332,121,432	2,765,976,604	337,999,917	1,584,636,325	12,893,227	4,259,892,713	4,588,886,242
11/10/05									
Allocations	125,025,748	45,167,821	3,871,721,432	3,747,581,429	731,999,917	1,910,951,106	19,193,227	4,606,450,500	5,152,370,231
Obligations	123,952,248	23,993,142	3,861,721,432	2,788,979,687	711,999,917	1,723,749,539	12,893,227	4,298,992,513	4,668,743,959
11/17/05									
Allocations	178,952,248	45,167,821	3,871,623,196	3,816,181,429	732,001,268	2,068,357,658	19,193,227	4,622,215,500	5,115,509,923
Obligations	133,952,248	24,019,966	3,861,623,196	2,853,319,885	732,001,268	1,959,853,974	12,893,227	4,300,057,513	4,650,788,222

(continued on next page)

Table 20. Total FEMA Allocations and Obligations, by Type (continued)

Week	<u>Unemployment Assistance</u>	<u>Crisis Counseling</u>	<u>Housing Assistance</u>	<u>Manufactured Housing</u>	<u>Other Needs Assistance</u>	<u>Infrastructure</u>	<u>Mitigation</u>	<u>Operations</u>	<u>Administration</u>
11/24/05									
Allocations	178,952,248	45,167,821	3,822,123,196	3,840,181,429	806,001,268	2,192,867,658	19,193,227	4,622,210,500	5,175,776,471
Obligations	188,952,248	24,019,966	3,786,623,196	2,914,485,450	756,001,268	2,062,230,513	12,893,227	4,353,626,983	4,672,380,618
12/1/05									
Allocations	178,952,248	45,167,821	3,848,008,827	3,977,427,137	905,987,205	2,289,534,799	19,193,227	4,622,210,500	5,319,561,776
Obligations	188,952,248	24,019,966	3,838,008,827	2,937,851,102	905,987,205	2,188,358,520	14,692,916	4,353,626,983	4,697,041,744
12/8/05									
Allocations	188,957,048	39,981,129	3,788,088,827	4,154,427,137	975,987,205	2,441,004,399	19,193,227	4,551,459,351	5,799,810,322
Obligations	188,952,248	22,649,999	3,788,088,827	2,992,571,427	975,987,205	2,307,573,660	14,692,916	4,337,026,209	4,852,897,873
12/15/05									
Allocations	188,957,048	39,981,129	3,528,008,797	4,205,244,937	975,487,205	2,489,909,722	19,193,227	4,861,191,839	5,856,615,599
Obligations	188,952,248	22,649,999	3,480,642,021	3,126,873,698	975,487,205	2,324,750,141	14,692,916	4,371,026,209	4,878,933,445
12/21/05									
Allocations	188,957,048	40,911,702	3,578,566,230	4,488,659,316	1,046,466,913	2,611,521,347	19,228,227	4,606,191,839	5,947,120,529
Obligations	188,952,248	22,649,999	3,515,630,455	3,334,955,101	1,046,466,913	2,523,057,923	14,692,916	4,375,476,209	5,220,449,597
12/28/05									
Allocations	198,979,104	40,911,702	3,609,366,230	4,678,624,316	1,112,466,913	2,630,231,281	19,228,227	4,606,191,839	5,968,176,495
Obligations	198,952,248	22,649,999	3,608,480,455	3,481,565,546	1,112,466,913	2,560,093,415	14,692,916	4,375,476,209	5,246,655,844
1/5/06									
Allocations	198,979,104	40,911,702	3,648,957,964	4,731,965,516	1,277,450,210	2,754,981,281	19,303,227	4,606,191,839	5,934,161,475
Obligations	198,952,248	22,717,564	3,648,072,189	3,482,013,026	1,277,450,210	2,581,088,627	14,692,916	4,375,476,209	5,329,919,160
1/11/06									
Allocations	198,979,104	40,911,702	3,687,358,179	4,814,098,942	1,302,367,229	2,838,969,681	24,433,907	4,412,391,898	6,146,140,241
Obligations	198,952,248	23,095,284	3,685,472,403	3,556,376,140	1,302,367,229	2,654,309,763	19,823,596	4,356,986,209	5,351,873,979
1/18/06									
Allocations	198,979,104	26,911,702	3,707,408,179	4,811,038,692	1,402,367,229	2,889,161,433	25,433,907	4,357,391,898	5,981,936,260
Obligations	198,952,248	24,033,271	3,705,522,403	3,616,504,801	1,402,367,229	2,703,760,785	19,823,596	4,322,315,209	5,383,365,675
1/25/06									
Allocations	214,204,814	144,991,010	3,769,420,729	4,869,673,252	1,403,350,462	2,911,790,671	25,783,907	4,372,391,898	6,060,571,734
Obligations	214,177,958	26,845,091	3,767,534,953	3,615,354,215	1,403,350,462	2,792,383,224	19,823,596	4,322,315,209	5,443,317,149
2/1/06									
Allocations	214,204,814	146,631,902	3,834,570,729	5,085,174,797	1,403,350,462	3,015,324,267	28,333,907	4,467,366,898	6,113,037,605
Obligations	214,177,958	27,461,527	3,833,570,640	3,622,559,220	1,403,350,462	2,941,552,889	19,823,596	4,417,290,209	5,479,981,775
2/8/06									
Allocations	221,184,814	149,084,325	3,836,570,729	5,087,458,007	1,418,350,462	3,060,338,440	28,333,907	4,455,446,898	6,185,412,370
Obligations	221,177,958	28,322,851	3,836,570,640	3,621,871,621	1,418,350,462	2,980,016,425	19,823,596	4,410,290,209	5,599,297,804
2/15/06									
Allocations	221,184,814	149,084,325	3,867,897,699	5,320,578,007	1,443,350,462	3,099,688,540	28,333,907	4,455,446,898	6,274,278,475
Obligations	221,177,958	36,098,072	3,862,897,611	3,685,926,118	1,443,350,462	3,013,839,585	19,823,596	4,417,619,784	5,616,275,989

(continued on next page)

Table 20. Total FEMA Allocations and Obligations, by Type (continued)

Week	<u>Unemployment Assistance</u>	<u>Crisis Counseling</u>	<u>Housing Assistance</u>	<u>Manufactured Housing</u>	<u>Other Needs Assistance</u>	<u>Infrastructure</u>	<u>Mitigation</u>	<u>Operations</u>	<u>Administration</u>
2/22/06									
Allocations	221,184,814	157,272,125	3,893,897,699	5,334,828,007	1,448,232,445	3,154,788,540	28,333,907	4,456,838,410	6,281,654,573
Obligations	221,177,958	49,074,503	3,893,897,611	3,841,873,153	1,443,232,445	3,061,827,535	19,823,596	4,410,290,209	5,641,627,773
3/1/06									
Allocations	221,184,814	157,272,125	3,935,317,800	5,380,137,007	1,482,232,445	3,263,303,669	29,248,907	4,450,038,410	6,344,001,297
Obligations	221,527,958	49,074,503	3,935,317,712	3,876,403,731	1,482,232,445	3,114,392,325	19,823,596	4,405,290,209	5,683,331,657
3/8/06									
Allocations	221,184,814	157,272,125	3,951,917,800	5,889,824,507	1,525,232,445	3,295,835,811	29,248,907	4,443,330,411	6,382,202,880
Obligations	221,527,958	49,474,240	3,951,917,712	4,289,786,918	1,525,232,445	3,180,240,906	19,823,596	4,406,789,709	5,754,682,613
3/15/06									
Allocations	370,862,659	157,188,505	3,959,117,660	6,214,824,507	1,548,078,042	3,307,422,428	42,544,325	4,439,330,411	5,935,558,043
Obligations	221,527,958	51,704,133	3,959,117,571	4,332,391,901	1,525,078,042	3,227,546,037	30,619,014	4,407,289,709	5,297,453,208
3/22/06									
Allocations	370,870,659	81,188,505	3,959,867,635	6,277,324,507	1,548,078,042	3,774,158,832	42,544,325	4,688,130,411	5,876,748,720
Obligations	328,939,802	51,704,133	3,959,867,546	4,488,453,256	1,548,078,042	3,651,998,743	30,619,014	4,656,089,709	5,266,860,566
3/29/06									
Allocations	386,870,659	81,188,505	3,984,963,937	6,397,831,507	1,600,920,823	3,985,973,321	42,813,325	4,688,130,411	5,932,732,601
Obligations	328,939,802	51,910,769	3,984,963,849	4,491,483,970	1,600,920,823	3,934,821,643	30,619,014	4,656,089,709	5,305,633,454
4/5/06									
Allocations	365,888,258	81,188,505	3,960,098,311	6,397,828,357	1,612,920,823	4,130,374,015	42,813,325	4,688,137,911	5,847,489,827
Obligations	329,162,166	52,341,383	3,959,656,839	4,761,737,214	1,612,920,823	4,049,013,904	30,718,755	4,657,361,209	5,362,303,310
4/12/06									
Allocations	365,888,258	81,188,505	3,972,628,311	6,439,944,357	1,612,920,823	4,240,679,882	42,813,325	4,888,937,911	5,910,704,022
Obligations	329,862,166	52,341,383	3,967,186,839	4,690,103,456	1,612,920,823	4,189,870,496	22,391,577	4,859,361,209	5,420,980,255
4/19/06									
Allocations	394,138,258	105,204,490	3,980,659,561	6,407,640,103	1,657,920,823	4,280,072,513	42,813,325	4,889,237,911	5,902,581,746
Obligations	329,862,166	52,341,383	3,980,443,089	4,691,244,838	1,627,920,823	4,238,076,645	22,391,577	4,859,556,209	5,440,772,193
4/26/06									
Allocations	394,138,258	105,204,490	3,986,775,928	6,407,640,123	1,695,843,874	4,393,698,260	34,486,147	4,892,157,911	5,928,076,973
Obligations	329,862,166	53,062,226	3,986,559,456	4,676,443,961	1,665,843,874	4,322,832,256	22,391,577	4,862,501,215	5,462,905,774
5/3/06									
Allocations	403,138,258	105,315,158	4,000,318,301	6,410,088,123	1,708,843,874	4,491,083,387	34,486,147	4,864,152,911	5,944,999,443
Obligations	387,362,166	53,044,517	3,994,001,829	4,747,166,983	1,705,843,874	4,426,435,328	22,391,577	4,862,996,215	5,480,965,186
5/10/06									
Allocations	403,138,258	105,315,158	4,010,147,557	6,189,315,402	1,708,843,874	4,522,372,336	34,486,147	4,864,152,911	5,943,389,908
Obligations	387,362,166	52,149,499	4,009,931,085	4,775,667,336	1,705,843,874	4,475,813,325	22,391,577	4,862,816,215	5,495,941,900
5/17/06									
Allocations	423,459,491	105,315,158	4,024,673,684	6,473,315,402	1,734,909,748	4,717,529,086	34,486,147	4,864,152,911	5,968,770,930
Obligations	407,683,399	52,149,499	4,024,457,212	4,840,517,378	1,731,909,748	4,599,045,380	22,391,577	4,862,816,215	5,519,031,999

(continued on next page)

Table 20. Total FEMA Allocations and Obligations, by Type (continued)

Week	Unemployment Assistance	Crisis Counseling	Housing Assistance	Manufactured Housing	Other Needs Assistance	Infrastructure	Mitigation	Operations	Administration
5/24/06									
Allocations	423,459,491	105,315,158	4,038,882,347	7,332,925,402	1,759,909,748	4,821,452,874	34,519,943	4,864,152,911	5,991,823,002
Obligations	407,683,399	52,149,499	4,038,940,964	4,936,149,297	1,759,909,748	4,706,291,480	22,425,373	4,862,816,215	5,543,599,437
5/31/06									
Allocations	423,459,491	109,905,451	4,040,820,822	7,339,529,227	1,779,898,476	4,885,890,554	45,414,345	4,914,152,911	5,986,839,333
Obligations	407,683,399	59,061,733	4,040,879,407	5,026,475,112	1,779,898,476	4,799,300,282	22,425,373	4,912,816,215	5,547,392,129
6/7/06									
Allocations	423,459,491	109,905,451	4,056,820,822	7,339,529,227	1,792,898,476	4,889,732,173	45,414,345	4,899,652,911	5,988,329,130
Obligations	410,183,399	60,521,419	4,056,879,357	5,026,775,796	1,792,898,476	4,845,937,462	35,467,606	4,907,316,215	5,579,492,096
6/14/06									
Allocations	423,459,491	110,403,403	4,072,274,422	7,222,789,141	1,810,849,976	5,254,828,375	45,414,345	4,899,652,911	6,010,559,873
Obligations	410,183,399	60,521,419	4,072,377,297	5,413,609,857	1,810,849,976	5,121,040,143	37,241,408	4,907,316,215	5,607,249,708
6/21/06									
Allocations	423,459,491	110,403,423	4,072,274,422	7,156,489,141	1,810,849,976	5,337,990,799	45,414,345	4,908,652,911	5,924,319,984
Obligations	410,183,399	60,521,419	4,072,377,297	5,450,525,840	1,810,849,976	5,290,042,417	37,311,153	4,907,316,215	5,550,696,512
6/28/06									
Allocations	423,459,491	110,403,423	4,072,274,422	7,212,416,641	1,810,849,976	5,557,440,970	44,292,820	4,908,652,911	5,888,448,960
Obligations	410,183,399	60,521,419	4,072,377,297	5,536,525,377	1,810,849,976	5,480,803,546	37,311,153	4,907,316,215	5,498,889,923
7/5/06									
Allocations	423,459,491	110,403,423	4,072,264,822	7,572,980,897	1,810,845,325	5,628,846,641	44,292,820	5,014,152,911	5,909,677,797
Obligations	410,183,399	60,521,419	4,072,367,697	5,798,564,808	1,810,845,325	5,523,160,949	37,311,153	5,001,209,776	5,548,192,111
7/12/06									
Allocations	423,459,491	110,403,423	4,072,424,015	7,572,980,897	1,817,120,125	5,669,042,470	44,292,820	5,010,940,743	5,924,035,209
Obligations	410,183,399	60,521,419	4,069,526,889	5,863,150,685	1,817,120,125	5,563,593,783	37,311,153	5,001,870,036	5,542,341,256
7/19/06									
Allocations	423,459,491	110,403,423	4,075,274,015	7,438,980,897	1,845,620,125	5,767,042,470	44,292,820	5,010,890,743	5,943,706,185
Obligations	410,183,399	60,521,419	4,073,376,548	6,208,826,786	1,845,620,048	5,650,631,719	36,311,153	5,001,870,036	5,538,615,423
7/26/06									
Allocations	423,459,491	110,403,423	4,077,753,689	7,438,980,897	1,845,620,125	5,814,908,309	44,292,820	5,013,925,743	5,951,753,594
Obligations	410,183,399	60,521,419	4,076,854,419	6,249,936,853	1,845,620,048	5,682,435,264	36,685,493	5,002,768,036	5,552,492,690
8/2/06									
Allocations									
Obligations									

Next available: 8/2006

Notes: Crisis Counseling = crisis call lines, supplemental funds to state and local mental health agencies; Housing Assistance = hotels, rental assistance, home repair assistance; Manufactured Homes = travel trailers, mobile homes; Other Needs Assistance = medical, dental, funeral, transportation, and other disaster-related costs; Infrastructure = inspections, rebuilding public facilities; Mitigation = inspections, hazard mitigation; Operations = technical expertise and goods and services assistance to states; Administration = salaries, travel expenses, equipment, materials, search and rescue operations, health and medical support, disease prevention, transportation of victims, delivery fees. Data for the week of 10/20/2005 were aggregated amounts for both Katrina and Rita; they are not included here.

Source: FEMA Katrina Hurricane Disaster Weekly Report

Table 21. Number of Travel Trailers and Mobile Homes: Ordered and Operational

Date	<u>Louisiana</u>	<u>Alabama</u>	<u>Mississippi</u>	<u>Overall</u>
10/20/05				
Number of MHs	57	0	5	62
Number of operational TTs	2,883	750	8,212	11,842
Number of ordered TTs	Not available	Not available	Not available	125,000
10/31/05				
Number of MHs	337	0	42	379
Number of operational TTs	4,355	2,178	12,394	17,575
11/3/05				
Number of MHs	Not available	Not available	Not available	559
Number of operational TTs	Not available	Not available	Not available	22,597
11/10/05				
Number of MHs	519	0	77	596
Number of operational TTs	6,535	803	16,597	23,935
11/24/05				
Number of MHs	667	0	162	829
Number of operational TTs	11,378	845	21,768	33,991
12/1/05				
Number of MHs	670	0	179	849
Number of operational TTs	13,184	845	23,562	37,591
12/15/05				
Number of MHs	Not available	Not available	292	Not available
Number of operational TTs	Not available	Not available	26,995	Not available
12/21/05				
Number of MHs	822	0	237	1,059
Number of operational TTs	20,977	845	27,821	49,643
12/29/05				
Number of MHs	850	0	243	1,093
Number of operational TTs	22,994	2,489	27,251	52,734
1/9/06				
Number of MHs	854	0	243	1,097
Number of operational TTs	27,033	2,524	29,286	58,843
1/17/06				
Number of MHs	1,523	0	359	1,882
Number of operational TTs	26,373	2,588	31,007	59,968
1/28/06				
Number of MHs	1,738	0	389	2,127
Number of operational TTs	31,240	2,494	33,452	67,186
2/15/06				
Number of MHs	1,975	0	389	2,364
Number of operational TTs	38,474	2,519	34,407	75,400

(continued on next page)

Table 21. Number of Travel Trailers and Mobile Homes: Ordered and Operational (continued)

Date	<u>Louisiana</u>	<u>Alabama</u>	<u>Mississippi</u>	<u>Overall</u>
2/27/06				
Number of MHs	2,171	0	389	2,560
Number of operational TTs	43,517	2,494	34,929	80,940
3/8/06				
Number of MHs	1,792	0	403	2,195
Number of operational TTs	48,584	2,964	34,929	86,477
3/22/06				
Number of MHs	2,638	0	403	3,041
Number of operational TTs	52,291	2,414	35,037	89,742
4/28/06				
Number of MHs	2,682	0	3,545	6,227
Number of operational TTs	62,843	2,006	34,483	99,332
5/28/06				
Number of MHs	3,057	0	4,130	7,187
Number of operational TTs	68,156	1,864	33,998	104,018
6/26/06				
Number of MHs	3,248	0	4,489	7,737
Number of operational TTs	70,437	1,788	33,702	105,927
7/24/06				
Number of MHs	3,543	0	4,649	8,192
Number of operational TTs	73,214	1,757	32,652	107,623
8/28/06				
Number of MHs				
Number of operational TTs			Next available: 9/2006	

Note: TT: travel trailer; MH: mobile home

Sources: FEMA Louisiana Field Office; FEMA News Desk

Table 22. Number of Hotel Units Being Occupied

Date	<u>Hotel Units</u>
11/4/05	52,000
11/11/05	53,000
11/25/05	49,826
12/2/05	41,953
12/16/05	37,597
12/28/05	37,424
1/8/06	25,697
1/17/06	27,135
1/25/06	26,689
2/15/06	11,652
2/27/06	10,266
3/8/06	7,172
3/20/06	3,952
4/30/06	820
6/1/06	273
6/26/06	146
7/16/06	39
8/26/06	Next available: 9/2006

Note: Hotel unit counts from 4/30/2006 onward represent the number of unexpired FEMA payment authorization codes which may or may not currently be in use by displaced households.

Sources: FEMA Louisiana Field Office; FEMA News Desk

Table 23. Number of Cruise Ship Cabins Being Occupied

<u>Date</u>	<u>Louisiana</u>	<u>Alabama</u>	<u>Mississippi</u>	<u>Overall</u>
10/20/05	2,186	505	0	2,691
11/3/05	2,304	0	577	2,881
11/10/05	2,320	0	658	2,978
11/28/05	2,312	0	538	2,850
12/2/05	2,310	0	526	2,836
12/21/05	2,295	0	436	2,731
12/29/05	1,576	0	406	1,982
1/9/06	2,311	0	341	2,652
1/17/06	2,264	0	302	2,566
1/28/06	2,120	0	167	2,287
2/15/06	1,744	0	104	1,848
2/27/06	1,228	0	48	1,276
3/3/06	0	0	0	0

Note: As of 3/3/06, FEMA is no longer managing cruise ships.

Sources: FEMA Louisiana Field Office; FEMA News Desk

Table 24. Cumulative Number of Households Approved for Housing and Rental Assistance through the FEMA Individuals and Households Program

<u>Date</u>	<u>Households Approved for Housing Assistance</u>	<u>Households Approved for Rental Assistance</u>
11/11/05	904,221	Not available
12/22/05	911,473	Not available
1/27/06	924,330	Not available
2/9/06	931,180	645,400
3/8/06	937,882	654,319
4/9/06	942,416	658,706
4/30/06	944,141	660,434
5/7/06	944,440	660,837
6/5/06	945,931	662,168
6/26/06	946,597	678,350
7/24/06	947,404	679,847
8/28/06		Next available: 9/2006

Notes: FEMA informed us in April 2006 that the number of households previously reported to be receiving rental assistance no longer fit that category.

We have updated all of the numbers in this table to reflect this change.

The housing assistance category in this table encompasses rental assistance, travel trailers/mobile homes, and assistance for personal housing repairs.

Source: FEMA News Desk

Table 25. Number of Army Corps Building Demolitions, by Parish

Date	<u>Orleans</u>	<u>Jefferson</u>	<u>Plaquemines</u>	<u>St. Tammany</u>	<u>Total</u>
1/20/06	0	0	5	0	5
1/27/06	0	0	5	0	5
2/3/06	0	0	5	0	5
2/10/06	0	0	5	0	5
2/17/06	0	0	5	0	5
2/24/06	0	0	5	0	5
3/2/06	0	0	5	0	5
3/9/06	6	0	5	0	11
3/16/06	35	0	5	0	40
3/29/06	119	0	264	0	383
4/28/06	119	0	484	0	603
5/28/06	128	9	739	0	876
6/28/06	185	110	803	7	1,105
7/28/06					

Next available: 8/2006

Note: Numbers are cumulative.

Source: Public Affairs, U.S. Army Corps of Engineers

Table 26. Number of Residential Building Permits Issued by New Orleans City Hall

Month	<u>Number of residential building permits</u>
9/05 – 12/05	4,959
1/06	12,315
2/06	13,906
3/06	22,062
4/06	25,807
5/06	28,819
6/06	33,778
7/06	36,309
8/06	38,594
9/06	

Next available: 9/2006

Note: Numbers are cumulative

Sources: City of New Orleans Department of Safety and Permits; New Orleans Times-Picayune; Chicago Tribune

V. LONGER TERM REBUILDING INDICATORS

Table 27. Population

	Level of Geography		
	<u>Orleans Parish</u>	<u>New Orleans Metro Area</u>	<u>Louisiana</u>
<i>Pre-Katrina</i>	463,000	1,340,735	4,515,770
11/05	138,681	818,600	4,116,925
12/05	138,681	848,751	4,137,331
1/06	156,140	871,982	4,137,915
2/06	181,400	881,613	4,152,693
3/06	Next available: fall 2006		4,135,152
4/06	Next available: fall 2006		4,121,382
5/06	Next available: fall 2006		4,113,290
6/06	Next available: fall 2006		Next available: fall 2006

Notes: These population estimates do not comport with traditional methodological standards for assessing area populations, and should be interpreted as rough approximations. Also, we urge users of the Louisiana DHH data from the New Orleans metropolitan area to take care in their interpretation of the data reported as monthly estimates. The February 2006 estimates are based on a survey completed at the end of January and released to the public in the middle of March. The January 2006 estimate is based on an upward bound population estimate from surveys administered in November and December – the source of the estimates released for these months. Also, note that the Louisiana population estimate is in all likelihood downwardly biased because of the dated population estimates from Orleans Parish.

Source: Brookings Institution analysis of data from the Louisiana DHH Bureau of Primary Care and Rural Health and the City of New Orleans Rapid Population Survey Project

Table 28. Proportion of Open Public Schools in New Orleans Metro, by Parish

Number of schools	Parish								Total
	<u>Orleans</u> 117	<u>Jefferson</u> 84	<u>Plaquemines</u> 9	<u>St. Bernard</u> 15	<u>St. Charles</u> 18	<u>St. James</u> 10	<u>St. John the Baptist</u> 12	<u>St. Tammany</u> 52	
Date									
9/12/05	0%	94%	0%	0%	100%	100%	100%	92%	51%
10/3/05	0%	94%	0%	0%	100%	100%	100%	100%	53%
10/17/05	0%	94%	33%	0%	100%	100%	100%	100%	54%
10/24/05	0%	95%	33%	0%	100%	100%	100%	100%	54%
10/31/05	0%	95%	33%	0%	100%	100%	100%	100%	54%
11/7/05	0%	95%	33%	0%	100%	100%	100%	100%	54%
11/14/05	0%	95%	33%	0%	100%	100%	100%	100%	54%
11/21/05	0%	100%	33%	7%	100%	100%	100%	100%	56%
11/28/05	(1/117)	100%	33%	7%	100%	100%	100%	100%	56%
12/5/05	(1/117)	100%	33%	7%	100%	100%	100%	100%	56%
12/12/05	(1/117)	100%	33%	7%	100%	100%	100%	100%	56%
12/19/05	5%	100%	33%	7%	100%	100%	100%	100%	57%
12/26/05	5%	100%	33%	7%	100%	100%	100%	100%	57%
1/3/06	9%	100%	33%	7%	100%	100%	100%	100%	59%
1/18/06	15%	100%	33%	7%	100%	100%	100%	100%	61%
1/25/06	15%	100%	33%	7%	100%	100%	100%	100%	61%
2/2/06	15%	100%	33%	7%	100%	100%	100%	100%	61%
3/2006	15%	100%	33%	7%	100%	100%	100%	100%	61%
4/2006	18%	100%	33%	7%	100%	100%	100%	100%	62%
5/2006	21%	100%	33%	7%	100%	100%	100%	100%	63%
6/2006	21%	100%	33%	7%	100%	100%	100%	100%	63%
7/2006	21%	100%	33%	7%	100%	100%	100%	100%	63%
8/2006	29%	100%	33%	7%	100%	100%	100%	100%	66%
9/2006									Next available: 9/2006

Sources: Louisiana Department of Education; Orleans Parish Schools; Jefferson Parish Schools; Plaquemines Parish Schools; St. Charles Parish Schools; St. Tammany Parish Schools

Table 29. Number of College Students to Returning to New Orleans

Date	<u>Dillard University</u>	<u>Loyola University</u>	<u>Tulane University</u>	<u>University of New Orleans</u>	<u>Xavier University</u>
Fall 2005 (Pre-Katrina)	2,155	5,480	12,500	17,000	4,100
Spring 2006	1,085 (50%)	4,993 (91%)	11,307 (90%)	11,446 (67%)	3,110 (76%)
Fall 2006					

Next available: fall 2006

Sources: Public Relations, Dillard University; Office of Institutional Research, Loyola University; Media Relations, Tulane University; Data Management, University of New Orleans; Office of Admissions, Xavier University; Washington Post

Table 30. Number of Open Hotels in New Orleans City

Month	<u>Number of open hotels</u>
<i>Pre-Katrina</i>	138
9/05 – 6/06	Temporarily unavailable
7/06	117 (85%)
8/06	Next available: 9/2006

Note: Due to a recently discovered reporting lag, we have decided to discard the historical data obtained from our former source. We are now working with area hotels directly to deliver the correct numbers in the next Index release.
Source: Major area hotels

Table 31. Proportion of Open Retail Food Establishments in New Orleans Metro

Month	<u>Proportion of open retail food establishments</u>
<i>Pre-Katrina</i>	100%
11/05	31%
12/05	32%
1/06	35%
2/06	37%
3/06	39%
4/06	41%
5/06	42%
6/06	43%
7/06	44%
8/06	Next available: 9/2006

Note: The Louisiana Restaurant Association defines the New Orleans metro to include Orleans, Jefferson, and St. Bernard parishes; these data reflect the proportion of open retail food establishments in these places only.
Source: Louisiana Restaurant Association

Table 32. Number of Open Public Libraries in the New Orleans Metro, by Parish

Month	Parish								New Orleans MSA
	Orleans	Jefferson	Plaquemines	St. Bernard	St. Charles	St. James	St. John the Baptist	St. Tammany	
<i>Pre-Katrina</i>	13	15	3	2	5	2	4	12	56
11/05	3 (23%)	7 (47%)	1 (33%)	0 (0%)	5 (100%)	2 (100%)	4 (100%)	10 (83%)	32 (57%)
12/05	4 (31%)	7 (47%)	1 (33%)	0 (0%)	5 (100%)	2 (100%)	4 (100%)	10 (83%)	33 (59%)
1/06	5 (38%)	7 (47%)	1 (33%)	0 (0%)	5 (100%)	2 (100%)	4 (100%)	10 (83%)	34 (61%)
2/06	5 (38%)	7 (47%)	1 (33%)	0 (0%)	5 (100%)	2 (100%)	4 (100%)	10 (83%)	34 (61%)
3/06	5 (38%)	7 (47%)	1 (33%)	0 (0%)	5 (100%)	2 (100%)	4 (100%)	10 (83%)	34 (61%)
4/06	5 (38%)	8 (53%)	1 (33%)	0 (0%)	5 (100%)	2 (100%)	4 (100%)	10 (83%)	35 (63%)
5/06	5 (38%)	8 (53%)	1 (33%)	0 (0%)	5 (100%)	2 (100%)	4 (100%)	11 (92%)	36 (64%)
6/06	8 (62%)	8 (53%)	1 (33%)	0 (0%)	5 (100%)	2 (100%)	4 (100%)	11 (92%)	39 (70%)
7/06	8 (62%)	8 (53%)	1 (33%)	0 (0%)	5 (100%)	2 (100%)	4 (100%)	11 (92%)	39 (70%)
8/06									

Next available: 9/2006

Sources: Louisiana Office of Cultural Recreation and Tourism; New Orleans Public Library; Jefferson Parish Public Library

Table 33. Proportion of Major Hospitals in Operation, by Parish

<u>Date</u>	<u>Orleans Parish</u>	<u>Jefferson Parish</u>	<u>St. Bernard Parish</u>	<u>Total</u>
<i>Pre-Katrina</i>	100%	100%	100%	100%
10/3/05	(22) 9%	(14) 50%	(2) 0%	(38) 24%
10/17/05	(2) 14%	(7) 50%	(0) 0%	(9) 26%
10/31/05	(3) 14%	(7) 79%	(0) 0%	(10) 37%
11/14/05	(3) 32%	(11) 86%	(0) 0%	(14) 50%
12/21/05	(7) 32%	(12) 93%	(0) 0%	(19) 53%
1/17/06	(7) 32%	(13) 93%	(0) 0%	(20) 53%
2/14/06	(7) 45%	(13) 93%	(0) 0%	(20) 55%
3/15/06	(10) 45%	(13) 93%	(0) 0%	(21) 55%
4/24/06	(10) 45%	(13) 93%	(0) 0%	(21) 55%
5/25/06	(11) 50%	(13) 93%	(0) 0%	(24) 63%
6/25/06	(11) 50%	(13) 93%	(0) 0%	(24) 63%
7/25/06	(11) 50%	(13) 93%	(0) 0%	(24) 63%
8/25/06	(11)	(13)	(0)	(24)

Next available: 9/2006

Source: Louisiana Hospital Association, individual hospital branches in Orleans, Jefferson, and St. Bernard parishes

Table 34. Number of Operational Child Care Centers in Louisiana and Select Parishes

Month	Parish						Louisiana
	Orleans	Jefferson	Plaquemines	St. Bernard	St. Charles	St. Tammany	
Pre-Katrina	266	197	14	24	26	76	1,996
2/06	38 (14%)	141 (72%)	8 (57%)	0 (0%)	24 (92%)	70 (92%)	1,654 (83%)
3/06	46 (17%)	144 (73%)	8 (57%)	0 (0%)	24 (92%)	72 (93%)	1,677 (84%)
4/06	48 (18%)	145 (74%)	8 (57%)	0 (0%)	24 (92%)	72 (93%)	1,680 (84%)
5/06	55 (20%)	143 (73%)	8 (57%)	1 (4%)	24 (92%)	72 (95%)	1,685 (84%)
6/06	57 (21%)	147 (75%)	9 (64%)	1 (4%)	24 (92%)	72 (95%)	1,696 (85%)
7/06	61 (23%)	151 (77%)	9 (64%)	1 (4%)	24 (92%)	72 (95%)	1,704 (85%)
8/06							

Next available: 8/2006

Source: Louisiana Department of Social Services Bureau of Licensing

Table 35. Number of New Residential Housing Permits, by Type

Month	Type of Home		
	<u>Single-Home</u>	<u>Multi-Family</u>	<u>Total</u>
6/05			
Orleans Parish	57	12	69
New Orleans Metro	501	59	560
Louisiana	1,889	138	2,027
Mississippi	1,108	99	1,207
7/05			
Orleans Parish	49	8	57
New Orleans Metro	418	31	449
Louisiana	1,614	213	1,827
Mississippi	904	91	995
8/05			
Orleans Parish	57	11	68
New Orleans Metro	594	74	668
Louisiana	1,884	122	2,006
Mississippi	1,115	200	1,315
9/05			
Orleans Parish	0	0	0
New Orleans Metro	73	3	76
Louisiana	1,575	78	1,653
Mississippi	731	585	1,316
10/05			
Orleans Parish	0	0	0
New Orleans Metro	90	3	93
Louisiana	1,502	88	1,590
Mississippi	1,038	70	1,108
11/05			
Orleans Parish	0	0	0
New Orleans Metro	78	2	80
Louisiana	1,651	181	1,832
Mississippi	956	69	1,025
12/05			
Orleans Parish	0	0	0
New Orleans Metro	154	2	156
Louisiana	1,361	82	1,443
Mississippi	847	83	930
1/06			
Orleans Parish	0	0	0
New Orleans Metro	85	4	89
Louisiana	1,449	109	1,558
Mississippi	939	127	1,066

(continued on next page)

Table 35. Number of New Residential Housing Permits, by Type (continued)

Month	Type of Home		
	<u>Single-Home</u>	<u>Multi-Family</u>	<u>Total</u>
2/06			
Orleans Parish	0	0	0
New Orleans Metro	358	20	378
Louisiana	1,631	120	1,751
Mississippi	914	72	986
3/06			
Orleans Parish	0	0	0
New Orleans Metro	523	24	547
Louisiana	2,312	120	2,432
Mississippi	1,371	167	1,538
4/06			
Orleans Parish	10	1	11
New Orleans Metro	364	25	389
Louisiana	1,648	200	1,848
Mississippi	1,224	75	1,299
5/06			
Orleans Parish	24	6	30
New Orleans Metro	367	49	416
Louisiana	1,874	248	2,122
Mississippi	1,492	569	2,061
6/06			
Orleans Parish	35	17	52
New Orleans Metro	417	25	442
Louisiana	1,843	328	2,171
Mississippi	1,389	72	1,461
7/06			
Orleans Parish			
New Orleans Metro		Next available: 9/2006	
Louisiana			
Mississippi			

Source: U.S. Census Bureau

Table 36. Number of Passengers Arriving and Departing from Louis Armstrong New Orleans International Airport

Month	Domestic	International	Charter	Total
6/05				
Arriving	438,607	2,833	2,369	443,809
Departing	420,433	3,080	1,834	425,347
7/05				
Arriving	436,836	3,267	1,253	441,356
Departing	435,895	3,110	1,191	440,196
8/05				
Arriving	352,789	1,879	399	355,067
Departing	359,231	1,848	216	361,295
9/05				
Arriving	18,871	0	95	18,966
Departing	22,735	0	497	23,232
10/05				
Arriving	97,538	0	0	97,538
Departing	96,797	0	0	96,797
11/05				
Arriving	149,680	0	478	150,158
Departing	150,859	0	478	151,337
12/05				
Arriving	173,707	0	0	173,707
Departing	177,351	0	0	177,351
1/06				
Arriving	190,905	0	143	191,048
Departing	183,811	0	143	183,954
2/06				
Arriving	190,797	0	2,547	193,344
Departing	191,287	0	2,540	193,827
3/06				
Arriving	241,705	0	489	246,598
Departing	240,493	0	489	240,982
4/06				
Arriving	253,927	0	60	253,987
Departing	247,995	0	60	248,055
5/06				
Arriving	270,859	0	342	271,201
Departing	283,311	0	847	284,158
6/06				
Arriving	286,102	0	1,261	287,363
Departing	292,220	0	956	293,176
7/06				
Arriving	Next available: 9/2006			
Departing				

Source: New Orleans Aviation Board

Table 37. Amount of Air Freight and Mail Transported Through Louis Armstrong New Orleans International Airport

Month		<u>Domestic</u>	<u>International</u>	<u>Total</u>
6/05				
	Sent	5,437,819 lbs	20,079	5,457,898
	Received	8,453,779	69,561	8,523,340
7/05				
	Sent	5,527,024	44,075	5,571,099
	Received	8,329,596	108,619	8,438,215
8/05				
	Sent	5,431,298	0	5,431,298
	Received	8,198,902	0	8,198,902
9/05				
	Sent	910,247	0	910,247
	Received	2,813,237	0	2,813,237
10/05				
	Sent	2,086,450	5,522	2,091,972
	Received	4,902,716	20,121	4,922,837
11/05				
	Sent	2,996,526	6,428	3,002,954
	Received	5,727,038	23,983	5,750,976
12/05				
	Sent	2,928,433	13,829	2,942,262
	Received	5,406,648	23,982	5,430,630
1/06				
	Sent	3,022,372	5,821	3,028,193
	Received	4,796,947	42,815	4,839,762
2/06				
	Sent	3,543,740	5,749	3,549,489
	Received	5,632,919	35,510	5,668,429
3/06				
	Sent	3,367,026	11,341	3,378,367
	Received	5,696,788	39,365	5,736,153
4/06				
	Sent	3,244,586	5,955	3,250,541
	Received	5,537,826	64,207	5,602,033
5/06				
	Sent	3,788,466	0	3,788,466
	Received	5,990,661	0	5,990,661
6/06				
	Sent	3,616,512	61,072	3,677,584
	Received	4,916,048	14,964	4,931,012
7/06				
	Sent	Next available: 9/2006		
	Received			

Source: New Orleans Aviation Board