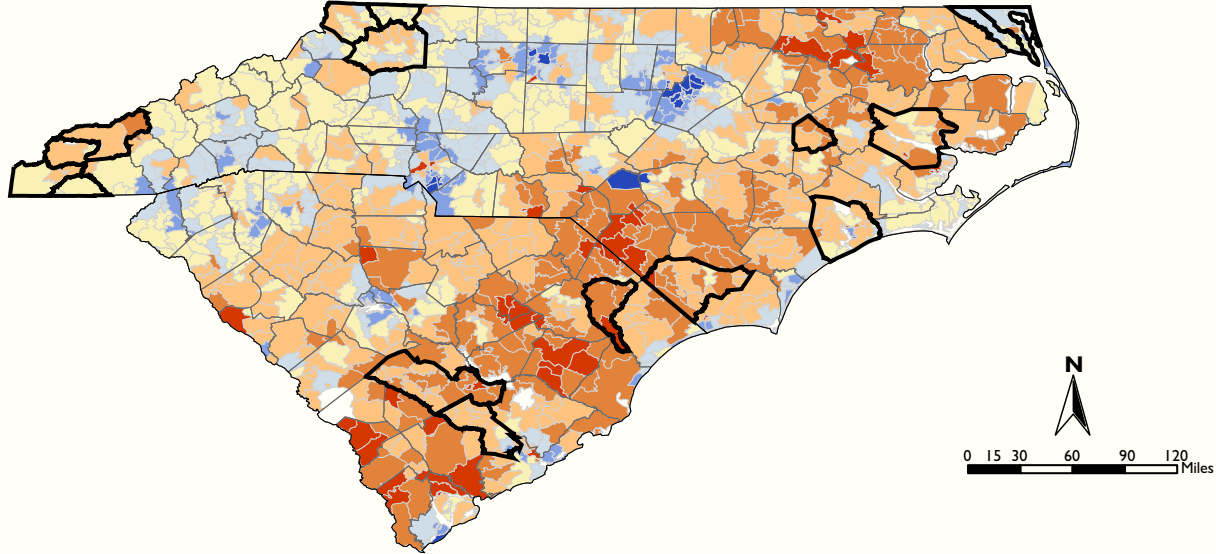
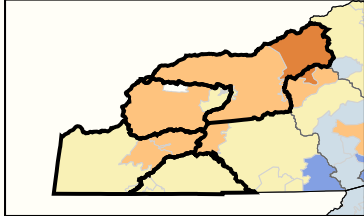


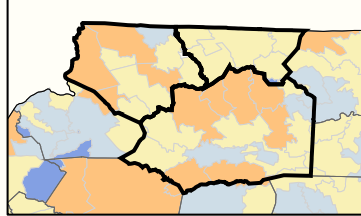
## North and South Carolina EITC Recipients as a Percentage of Returns by Zip Code, 2000



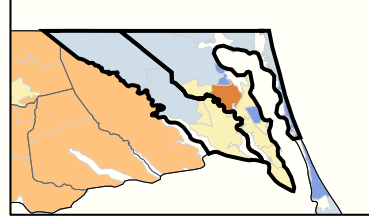
Cherokee, Graham, Swain,  
and Clay, NC



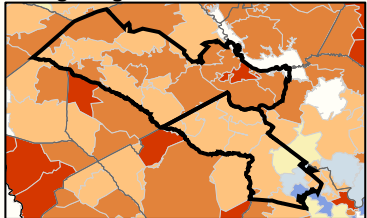
Ashe, Alleghany and Wilkes, NC



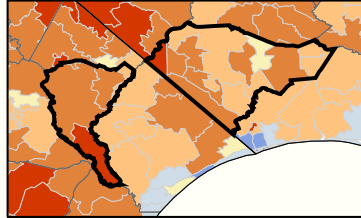
Camden, and Currituck, NC



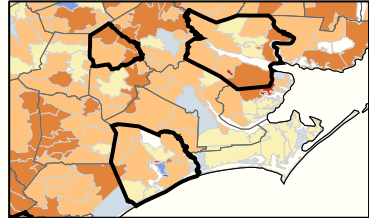
Orangeburg and Dorchester, SC



Marion, SC and Columbus, NC



Greene, Onslow and Beaufort, NC



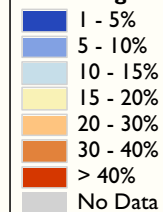
### Rural NC & SC

#### Tax Year 2000

EITC Earners	61,096
% Earning EITC	22.9%
Amount EITC Earned	\$106,692,406
Average EITC Earned	\$1,746
% EITC Earners with RAL (TY1999)	54.8%

*Note: Figures include only those zip codes associated with named counties*

#### Percentage Recipients



Source: Internal Revenue Service